



ezviz™

# ezBattery Camera

## Quick Start Guide

EN

DE

ES

FR

IT

NL

PL

RU

GC

CZ



## About the Documents

The documents include instructions for using and managing the product. Pictures, charts, images and all other information hereinafter are for description and explanation only. The information contained in the documents is subject to change, without notice, due to firmware updates or other reasons. Please find the latest version in the website (<http://www.evizlife.com>).

Any and all information, including, among others, wordings, pictures, graphs are the properties of EZVIZ Inc. or its subsidiaries (hereinafter referred to be "EZVIZ"). The documents cannot be reproduced, changed, translated, or distributed, partially or wholly, by any means, without the prior written permission of EZVIZ. Unless otherwise stipulated, EZVIZ does not make any warranties, guarantees or representations, express or implied, regarding to the documents.

## Trademarks Acknowledgement

**EVIZ**<sup>™</sup>,  <sup>™</sup>, and other EZVIZ's trademarks and logos are the properties of EZVIZ in various jurisdictions. Other trademarks and logos mentioned in the documents are the properties of their respective owners.

## Legal Disclaimer

TO THE MAXIMUM EXTENT PERMITTED BY APPLICABLE LAW, THE PRODUCT DESCRIBED, WITH ITS HARDWARE, SOFTWARE AND FIRMWARE, IS PROVIDED "AS IS", WITH ALL FAULTS AND ERRORS, AND EZVIZ MAKES NO WARRANTIES, EXPRESS OR IMPLIED, INCLUDING WITHOUT LIMITATION, MERCHANTABILITY, SATISFACTORY QUALITY, FITNESS FOR A PARTICULAR PURPOSE, AND NON-INFRINGEMENT OF THIRD PARTY. IN NO EVENT WILL EZVIZ, ITS DIRECTORS, OFFICERS, EMPLOYEES, OR AGENTS BE LIABLE TO YOU FOR ANY SPECIAL, CONSEQUENTIAL, INCIDENTAL, OR INDIRECT DAMAGES, INCLUDING, AMONG OTHERS, DAMAGES FOR LOSS OF BUSINESS PROFITS, BUSINESS INTERRUPTION, OR LOSS OF DATA OR DOCUMENTATION, IN CONNECTION WITH THE USE OF THIS PRODUCT, EVEN IF EZVIZ HAS BEEN ADVISED OF THE POSSIBILITY OF SUCH DAMAGES.

TO THE MAXIMUM EXTENT PERMITTED BY APPLICABLE LAW, IN NO EVENT SHALL EZVIZ'S TOTAL LIABILITY FOR ALL DAMAGES EXCEED THE PURCHASE PRICE THE PRODUCT.

EZVIZ does not undertake any liability for personal injury or property damage, as the result of product interruption or service termination cause by: a) improper installation or usage other than as requested; b) the protection of national or public interests; c) Force Majeure; d) yourself or the third party, including not limitation, using any third party's products, software, applications, and among others.

REGARDING TO THE PRODUCT WITH INTERNET ACCESS, THE USE OF PRODUCT SHALL BE WHOLLY AT YOUR OWN RISKS. EZVIZ SHALL NOT TAKE ANY RESPONSIBILITIES FOR ABNORMAL OPERATION, PRIVACY LEAKAGE OR OTHER DAMAGES RESULTING FROM CYBER ATTACK, HACKER ATTACK, VIRUS INSPECTION, OR OTHER INTERNET SECURITY RISKS; HOWEVER, EZVIZ WILL PROVIDE TIMELY TECHNICAL SUPPORT IF REQUIRED.

## Regulatory Information

### FCC Information

FCC compliance: This device complies with Part 15 of the FCC Rules. Operation is subject to the following two conditions:

- (1) This device may not cause harmful interference, and
- (2) This device must accept any interference received, including interference that may cause undesired operation.

Note: This product has been tested and found to comply with the limits for a Class B digital device, pursuant to Part 15 of the FCC Rules. These limits are designed to provide reasonable protection against harmful interference in a residential installation. This product generates, uses, and can radiate radio frequency energy and, if not installed and used in accordance with the instructions, may cause harmful interference to radio communications. However, there is no guarantee that interference will not occur in a particular installation. If this product does cause harmful interference to radio or television reception, which can be determined by turning the equipment off and on, the user is encouraged to try to correct the interference by one or more of the following measures:

- Reorient or relocate the receiving antenna.
- Increase the separation between the equipment and receiver.
- Connect the equipment into an outlet on a circuit different from that to which the receiver is connected.
- Consult the dealer or an experienced radio/TV technician for help.

Please take attention that changes or modification not expressly approved by the party responsible for compliance could void the user's authority to operate the equipment.

This equipment should be installed and operated with a minimum distance 20cm between the radiator and your body  
This device complies with Industry Canada licence-exempt RSS standard(s). Operation is subject to the following two conditions:

- (1) this device may not cause interference, and
- (2) this device must accept any interference, including interference that may cause undesired operation of the device.

Under Industry Canada regulations, this radio transmitter may only operate using an antenna of a type and maximum (or lesser) gain approved for the transmitter by Industry Canada. To reduce potential radio interference to other users, the antenna type and its gain should be so chosen that the equivalent isotropically radiated power (e.i.r.p.) is not more than that necessary for successful communication.

EU Conformity Statement



This product and - if applicable - the supplied accessories too are marked with "CE" and comply therefore with the applicable harmonized European standards listed under the Radio Equipment Directive 2014/53/EU, the EMC Directive 2014/30/EU, the RoHS Directive 2011/65/EU.



2012/19/EU (WEEE directive): Products marked with this symbol cannot be disposed of as unsorted municipal waste in the European Union. For proper recycling, return this product to your local supplier upon the purchase of equivalent new equipment, or dispose of it at designated collection points. For more information see: [www.recyclethis.info](http://www.recyclethis.info).



2006/66/EC and its amendment 2013/56/EU (battery directive): This product contains a battery that cannot be disposed of as unsorted municipal waste in the European Union. See the product documentation for specific battery information. The battery is marked with this symbol, which may include lettering to indicate cadmium (Cd), lead (Pb), or mercury (Hg). For proper recycling, return the battery to your supplier or to a designated collection point. For more information see: [www.recyclethis.info](http://www.recyclethis.info).



**Гарантийный срок-1 год**

**Срок службы-3 года**

**Производитель:Ханджоу Хиквижн Диджитал Технолджи(Китай)**

**Импортер-поставщик в России: ЗАО "Хиквижн"**

**Импортер-поставщик в Республике Беларусь:ООО "Торговый Дом "АВАНТ-ТЕХНО"**

**Сайт:www.ezviz.ru**

Industry Canada ICES-003 Compliance

This device meets the CAN ICES-3 (B)/NMB-3(B) standards requirements.

This device complies with Industry Canada licence-exempt RSS standard(s). Operation is subject to the following two conditions:

- (1) this device may not cause interference, and
- (2) this device must accept any interference, including interference that may cause undesired operation of the device.

Le présent appareil est conforme aux CNR d'Industrie Canada applicables aux appareils radioexempts de licence. L'exploitation est autorisée aux deux conditions suivantes :

(1) l'appareil ne doit pas produire de brouillage, et

(2) l'utilisateur de l'appareil doit accepter tout brouillage radioélectrique subi, même si le brouillage est susceptible d'en compromettre le fonctionnement.

This equipment should be installed and operated with a minimum distance 20cm between the radiator and your body

Cet équipement doit être installé et utilisé à une distance minimale de 20 cm entre le radiateur et votre corps

Under Industry Canada regulations, this radio transmitter may only operate using an antenna of a type and maximum (or lesser) gain approved for the transmitter by Industry Canada. To reduce potential radio interference to other users, the antenna type and its gain should be so chosen that the equivalent isotropically radiated power (e.i.r.p.) is not more than that necessary for successful communication.

Conformément à la réglementation d'Industrie Canada, le présent émetteur radio peut

fonctionner avec une antenne d'un type et d'un gain maximal (ou inférieur) approuvé pour l'émetteur par Industrie Canada. Dans le but de réduire les risques de brouillage radioélectrique à l'intention des autres utilisateurs, il faut choisir le type d'antenne et son gain de sorte que la puissance isotrope rayonnée équivalente (p.i.r.e.) ne dépasse pas l'intensité nécessaire à l'établissement d'une communication satisfaisante.

## Safety Instruction

CAUTION: THE PRODUCT IS BUILT IN A REPLACEABLE BATTERY. RISK OF EXPLOSION IF BATTERY IS REPLACED BY AN INCORRECT TYPE. DISPOSE OF USED BATTERIES ACCORDING TO THE INSTRUCTIONS. KEEP THE BATTERY AWAY FROM FIRE AND DO NOT DAMAGE IT FOR IT MAY EXPLODE. DO NOT REFIT OR DISASSEMBLE THE BATTERY OR USE IT FOR OTHER PURPOSES. DO NOT SHORT CIRCUIT THE BATTERY, WHICH MAY CAUSE DAMAGE. WHEN THE BATTERY SWELLS OR LEAKS AND ETC., STOP USING IT AND CONTACT THE DEALER IMMEDIATELY.

**Due to the product shape and dimension, the name and address of the importer/manufacturer are printed on the package.**

## EC DECLARATION OF CONFORMITY

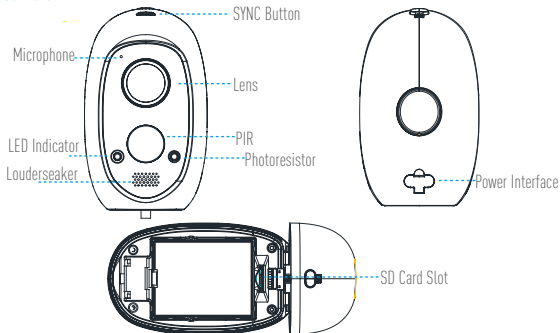
Hereby, Hangzhou Hikvision Digital Technology Co., Ltd. declares that the radio equipment type [CS-CV316, CS-W2D] is in compliance with Directive 2014/53/EU.

The full text of the EC DECLARATION OF CONFORMITY is available at the following web link:

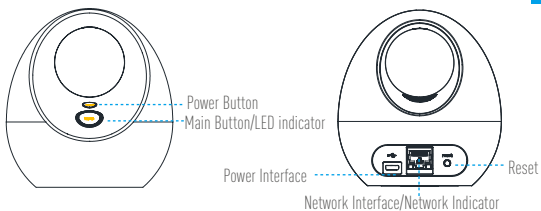
<http://www.ezvizlife.com/declaration-of-conformity>.

**SAVE THIS MANUAL FOR FUTURE REFERENCE**

## Camera



Name	Description
SYNC Button	Use to synchronize the base station.
PIR	With the PIR (Passive Infrared), the device can detect a human body to determine when there is a possible break in and begins to record footage.
LED Indicator	<ul style="list-style-type: none"><li>• Steady Red: The camera is starting.</li><li>• Slow-Flashing Blue: The camera is starting to synchronize or the device is updating.</li><li>• Fast-Flashing Blue: The synchronization is complete.</li><li>• Fast-Flashing Red: The synchronization failed.</li></ul>
Photoresistor	Detects the environment's light conditions to activate the Day/Night switch function.
SD Card	Recommended compatibility: Class 10, Max.128GB. Format it before using.
Power Interface	For charging the battery or powering up the camera.



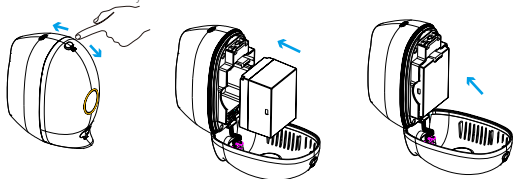
Name	Description
LED Indicator	<ul style="list-style-type: none"> <li>Steady Green: The system works properly.</li> <li>Steady Blue: Device is not connected to internet.</li> <li>Flashing Blue: Memory card is formatting or device starting synchronization with the camera.</li> </ul>
Main Button	Press to start synchronization with the camera (The synchronization lasts 2 mins).
Power Button	Press to connect or cut off power. (Opened by default.)
Network Indicator	<ul style="list-style-type: none"> <li>Steady Green: The network cable is connected.</li> <li>Flashing Green: Data transmission is working.</li> </ul>
Reset Button	Press to restart and reset all parameters to default.

## Setup

- i** The camera should be used with the EZVIZ base station. Base station is sold separately (unless in bundle).

### Step 1 Insert Battery into Camera

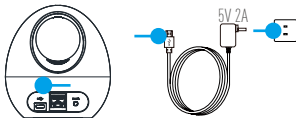
- Press the button as shown below to open battery cover.
- Insert the battery.
- Close the battery cover.



- i** Use the exclusive charger to charge the battery.

### Step 2 Power on the Base Station

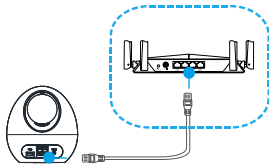
- Wait until the LED indicator turns to solid blue.



### Step 3 Connect Base Station to Internet via Network Cable

- Connect the base station to your router with the network cable.





- i** Make sure network indicator is on or flashing.

#### Step 4 Synchronize Base Station with Camera(s)

- i**
- Make sure the camera is within 2' to 3' (0.6 m to 1 m) of the base station.
  - The synchronization process takes about 2 minutes.
1. Press the Main Button on the Base Station. The circular LED indicator flashes Blue.



2. Press and hold the Sync button on the camera for 6 seconds. The LED indicator will slowly flash blue. When flashing blue becomes more rapid and then stops, sync is confirmed.

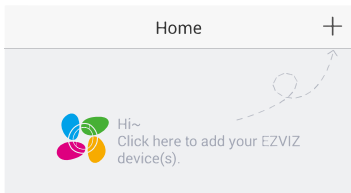


- Fast-Flashing Blue: Synchronization complete.
- Fast-Flashing Red: Sync failed. Repeat the Sync Process.

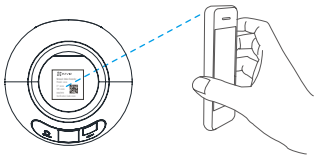
- i** You can sync up to 6 cameras to each base station at the same time.

## Step 5 Add the Base Station to Your EZVIZ Account

1. Create an user account.
  - Connect your mobile device to Wi-Fi.
  - Search "EZVIZ" in App Store or Google Play™ to download.
  - Launch the App and register an EZVIZ user account.
2. Add Base Station to EZVIZ.
  - Log in the EZVIZ App.
  - At the Home screen, tap "+" on the upper-right corner to go to the scanning QR code interface.



- Scan the QR Code on base station or manually enter the Serial Number to add base station.

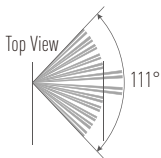
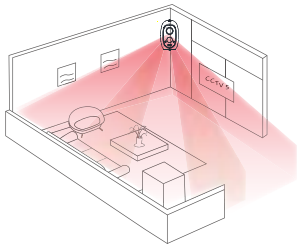


- Tap the "Add" button to finish setup. This will take approximately 1 minute.
- Tap "View Camera" to start using and viewing your camera(s) in the mobile app.

# Camera Installation

**Step 1** Pick a clean and flat surface, indoors or outdoors.

- Camera and base station should be within the distance of up to 300 feet (100 m). Stay away from wireless device or barriers to avoid decreasing the communication distance.
- Your camera provides a 111-degree viewing angle. Position your cameras to make sure the scene you want to video is in the cameras' field of view.
- Your camera motion sensor is far more sensitive to side-to-side movement across their field of view. The best area for motion detection is 5 feet to 25 feet (1.5 to 7.5 meters) from the camera position.



**Step 2** Secure the magnetic mount with the enclosed screw.

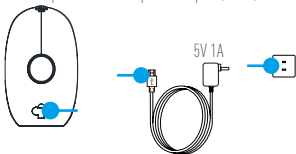


**Step 3** Mount the camera to the magnetic mount or attach it directly to a magnetic surface.

## Charge the Battery

**i** The battery is fully charged when it leaves the factory.

1. Install the battery into the camera.
2. Connect the camera with power outlet via power adaptor (5V 1A).



## Box Contents



Camera (x1)



Base Station (x1)



Battery (x1)



Metal Plate (x1)



Screw Kit (x1)



Network Cable (x1)



Power Adaptor (x2)



Quick Start Guide (x1)