



H3C MSR 20-1X Series Routers Quick Start (V1.00)

1 Product Overview

H3C MSR 20-1X series routers, developed by Hangzhou H3C Technologies Co., Ltd., are multifunctional access routers which are oriented to small and medium business (SMB), enterprise branches, and home offices, and are designed to serve high-quality orderwire and commercial networks.

MSR 20-1X series routers include the following models.

Table 1 MSR 20-1X series routers

Model	Description
H3C MSR 20-10	Four 10/100 Mbps L2 Ethernet ports (LAN) One 10/100 Mbps Ethernet port (WAN) One USB port One console/AUX port
H3C MSR 20-11	Four 10/100 Mbps L2 Ethernet ports (LAN) One 10/100 Mbps Ethernet port (WAN) One USB port One Console/AUX port One SA port
H3C MSR 20-12	Four 10/100 Mbps L2 Ethernet ports (LAN) One 10/100 Mbps Ethernet port (WAN) One USB port One Console/AUX port One E1/T1 port

Model	Description
H3C MSR 20-13	Four 10/100 Mbps L2 Ethernet ports (LAN) One 10/100 Mbps Ethernet port (WAN) One USB port One console/AUX port One G.SHDSL port One ISDN BRI S/T port
H3C MSR 20-15	Four 10/100 Mbps L2 Ethernet ports (LAN) One 10/100 Mbps Ethernet port (WAN) One USB port One console/AUX port One ADSL port One ISDN BRI S/T port or one AM port

2 Connection

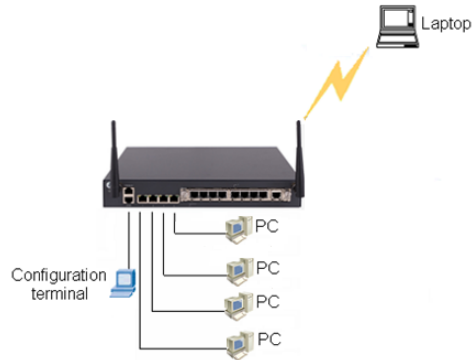


Figure 1 MSR 20-1X series routers connection diagram

3 Related Documentation

Table 2 lists the manuals related to MSR 20-1X series routers. You can get them from the delivered CDs or the website at <http://www.h3c.com>.

Table 2 Related manuals

Manual	Description
<i>H3C MSR 20_30_50 Series Routers User Manual</i>	Guides users to operate all low-end and mid-range series routers, explains in detail the operation commands involved, and presents an index to all these operation commands. <i>User Manual</i> consists of <i>Access Volume</i> , <i>IP Service Volume</i> , <i>IP Routing Volume</i> , <i>IP Multicast Volume</i> , <i>MPLS Volume</i> , <i>VPN Volume</i> , <i>QoS Volume</i> , <i>Security Volume</i> , <i>System Volume</i> , <i>IPX Volume</i> , and <i>Voice Volume</i> .
<i>H3C MSR 20-1X Series Routers Installation Manual</i>	Details the hardware specifications, installation, configuration, maintenance, and troubleshooting of H3C MSR 20-1X Series Routers.
<i>H3C MSR 20_30_50 Series Routers Interface Card and Interface Module Manual</i>	Introduces the functions, interface properties, panels, LEDs, and connection of interface cables of all involved interface cards and interface modules.
<i>Low-End and Mid-Range Series Routers Cable Manual</i>	Describes the cables for low-end and mid-range series routers and the cable pinouts.

This product has been designed to comply with the requirements on environmental protection. For the proper storage, use and disposal of this product, national laws and regulations must be observed.

4 Technical Support

Hangzhou H3C Technologies Co., Ltd. provides customers with comprehensive technical support and service.

If you purchase an MSR 20 products from the sales agent of Hangzhou H3C Technologies Co., Ltd., contact our sales agent or technical personnel.

Address: 310 Liuhe Road, Zhijiang Science Park,

OEM Installation Guide:

This device is intended only form OEM integrators under the following conditions:

- 1) The antenna must be installed such that 20cm is maintained between the antenna and users, and
- 2) The transmitter module may not be co-located with any other transmitter or antenna.

IMPORTANT NOTE: In the event that these conditions can not be met (for example certain laptop configurations or co-location with another transmitter), then the FCC authorization is no longer considered valid and the FCC ID can not be used on the final product. In these circumstances, the OEM integrator will be responsible for re-evaluating the end product (including the transmitter) and obtaining a separate FCC authorization.

15.21 Regulatory information:

Installation and use of this Wireless LAN device must be in strict accordance with the instructions included in the user documentation provided with the product. Any changes or modifications (including the antennas) made to this device that are not expressly approved by the manufacturer may void the user's authority to operate the equipment. The manufacturer is not responsible for any radio or television interference caused by unauthorized modification of this device, or the substitution of the connecting cables and equipment other than manufacturer specified. It is the responsibility of the user to correct any interference caused by such unauthorized modification, substitution or attachment. Manufacturer and its authorized resellers or distributors will assume no liability for any damage or violation of government regulations arising from failing to comply with these guidelines.

15.199a)(3)

This device complies with Part 15 of the FCC Rules. Operation is subject to the following two conditions:

- (1) This device may not cause harmful interference.

This device must accept any interference received, including interference that may cause undesired operation.

15.105 FCC Reuqirements:

This equipment has been tested and found to comply with the limits for a class B digital device, pursuant to part 15 of the FCC Rules. These limits are designed to provide reasonable protection against harmful interference in a residential installation.

This equipment generates, uses and can radiate radio frequency energy and, if not installed and used in accordance with the instructions, may cause harmful interference to radio communications. However, there is no guarantee that

interference will not occur in a particular installation. If this equipment does cause harmful interference to radio or television reception, which can be determined by turning the equipment off and on, the user is encouraged to try to correct the interference by one or more of the following measures:

---Reorient or relocate the receiving antenna.

---Increase the separation between the equipment and receiver.

---Connect the equipment into an outlet on a circuit different from that to which the receiver is connected.

---Consult the dealer or an experienced radio/TV technician for help.

Hangzhou, Zhejiang Province, P. R. China

Postal Code: 310053

Website: <http://www.h3c.com>

E-mail: customer_service@h3c.com

BOM: 3101A09P