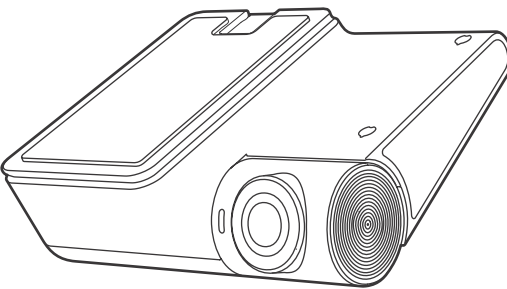


Dashcam-G2
User Manul



Scan and download the APP

A Regulatory Information

FCC Information

Please take attention that changes or modification not expressly approved by the party responsible for compliance could void the user's authority to operate the equipment.

FCC compliance: This equipment has been tested and found to comply with the limits for a Class B digital device , pursuant to part 15 of the FCC Rules. These limits are designed to provide reasonable protection against harmful interference in a residential installation. This equipment generates, uses and can radiate radio frequency energy and, if not installed and used in accordance with the instructions, may cause harmful interference to radio communications. However, there is no guarantee that interference will not occur in a particular installation. If this equipment does cause harmful interference to radio or television reception, which can be determined by turning the equipment off and on, the user is encouraged to try to correct the interference by one or more of the following measures:

- Reorient or relocate the receiving antenna.
 - Increase the separation between the equipment and receiver.
 - Connect the equipment into an outlet on a circuit different from that to which the receiver is connected.
 - Consult the dealer or an experienced radio/TV technician for help.
- This equipment should be installed and operated with a minimum distance 20cm between the radiator and your body.

A Regulatory Information

FCC Conditions

This device complies with part 15 of the FCC Rules. Operation is subject to the following two conditions:

1. This device may not cause harmful interference.
2. This device must accept any interference received, including interference that may cause undesired operation.

EU Conformity Statement

	This product and - if applicable - the supplied accessories too are marked with "CE" and comply therefore with the applicable harmonized European standards listed under the RE Directive 2014/53/EU, the EMC Directive 2014/30/EU, the LVD Directive 2014/35/EU, the RoHS Directive 2011/65/EU
	2012/19/EU (WEEE directive): Products marked with this symbol cannot be disposed of as unsorted municipal waste in the European Union. For proper recycling, return this product to your local supplier upon the purchase of equivalent new equipment, or dispose of it at designated collection points. For more information see: www.recyclethis.info

A Regulatory Information

	The power supply must conform to LPS. The recommended adaptor model is C10, whose manufacturer is Dongguan NB Power Electronic Limited. Use this kind of adaptor, and do not change the adaptor randomly.
--	---

Industry Canada ICES-003 Compliance

This device meets the CAN ICES-3 (B)/NMB-3(B) standards requirements.

This device complies with Industry Canada licence-exempt RSS standard(s). Operation is subject to the following two conditions:

- (1) this device may not cause interference, and
- (2) this device must accept any interference, including interference that may cause undesired operation of the device.

Le présent appareil est conforme aux CNR d'Industrie Canada applicables aux appareils radioexempts de licence. L'exploitation est autorisée aux deux conditions suivantes :

- (1) l'appareil ne doit pas produire de brouillage, et
- (2) l'utilisateur de l'appareil doit accepter tout brouillage radioélectrique subi, même si le brouillage est susceptible d'en compromettre le fonctionnement.

Under Industry Canada regulations, this radio transmitter may only operate using an antenna of a type and maximum (or lesser) gain approved for the transmitter by Industry Canada. To reduce

A Regulatory Information

potential radio interference to other users, the antenna type and its gain should be so chosen that the equivalent isotropically radiated power (e.i.r.p.) is not more than that necessary for successful communication.

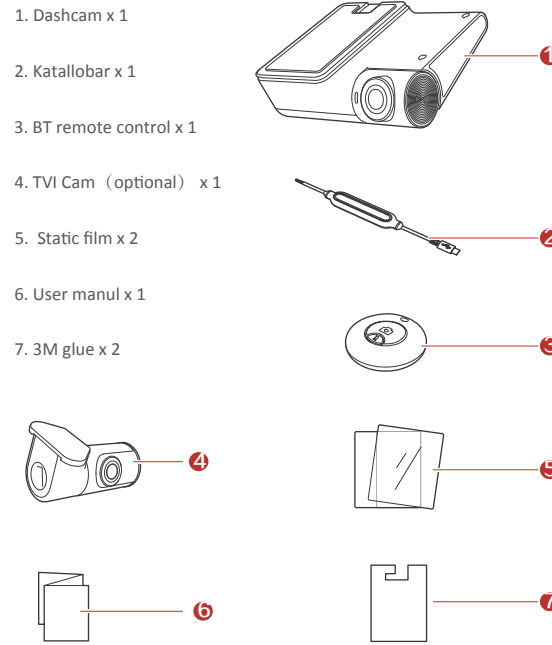
Conformément à la réglementation d'Industrie Canada, le présent émetteur radio peut

fonctionner avec une antenne d'un type et d'un gain maximal (ou inférieur) approuvé pour l'émetteur par Industrie Canada. Dans le but de réduire les risques de brouillage radioélectrique à l'intention des autres utilisateurs, il faut choisir le type d'antenne et son gain de sorte que la puissance isotrope rayonnée équivalente (p.i.r.e.) ne dépasse pas l'intensité nécessaire à l'établissement d'une communication satisfaisante.

This equipment should be installed and operated with a minimum distance 20cm between the radiator and your body.
Cet équipement doit être installé et utilisé à une distance minimale de 20 cm entre le radiateur et votre corps.

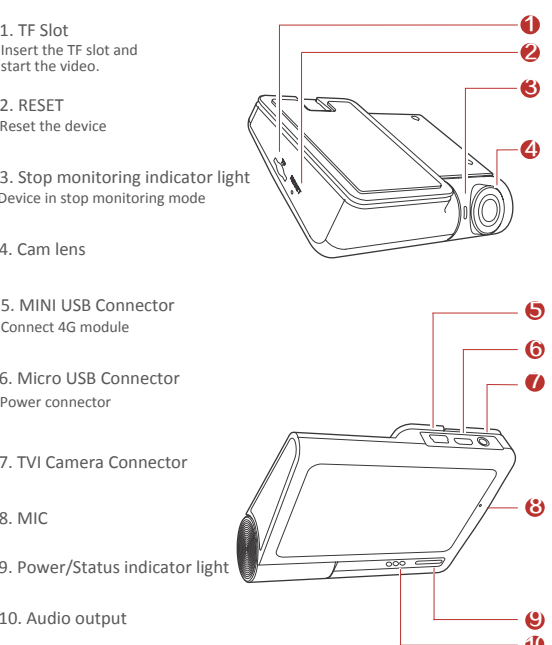
B Packing List

1. Dashcam x 1
2. Katallobar x 1
3. BT remote control x 1
4. TVI Cam (optional) x 1
5. Static film x 2
6. User manul x 1
7. 3M glue x 2

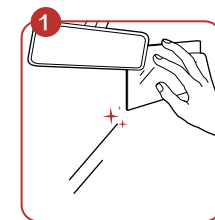


C Part Specification

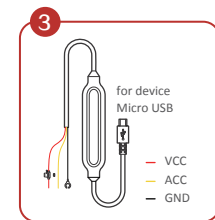
1. TF Slot
Insert the TF slot and start the video.
2. RESET
Reset the device
3. Stop monitoring indicator light
Device in stop monitoring mode
4. Cam lens
5. MINI USB Connector
Connect 4G module
6. Micro USB Connector
Power connector
7. TVI Camera Connector
8. MIC
9. Power/Status indicator light
10. Audio output



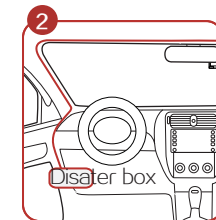
D Installation instruction



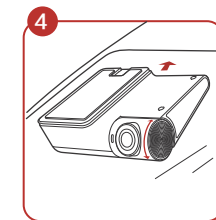
Clean the windshield and stick the static film on the windshield,make sure no bubble.



Connect the katallobar as aboved label.



Stick the device on the static film and get power from the disater box.



Adjust the angle of the lens for your view.

E Mobile Phone Connection

1 Scan the QR code to download the HikDashcam app.



3 Dashcam Wi-Fi default parameters:
• Wi-Fi name: HIKVISION-XXXX (XXXX refers to the last four characters of verification code.)
• Wi-Fi password: 1234567890

F Basic operation

Power on

Connector the katalobar with car battery,once start the car, device will start the video automatically.



When the car is off,device will turn into Parking Monitoring mode and start to record once the current scene changed or collision happened.

BT remote control

You can start recording and capturing via Bluetooth remote control, an optional accessory.

- Step Press the capture button to capture a picture. If you
- has enabled the Linkage Recording function in mobile app, a 12-second video of 6 seconds before and 6 seconds after the capture will be saved



Try to install BT module avoid the airbags for your safety

F Basic operation

Power on the device and into preview interface.
change the chanel by slide left/right(if with second camera).

- Slide down the main interface.we have shortcut key to turn on/off Wi-Fi,BT,GPS,Speaker,Recording
- Click the screen and slide left,we can go into the main menu

Recording

The voice recording can set on or off during the video and we have 3 ways to realize

Option1:Through BT remote module to turn on/off the voice recording.
Option:Enter into “System setting-video parameter-voice in recording”.
Option3:By Hikdashcam APP.

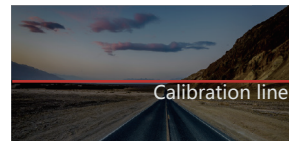
Setting the calibration line

Please adjust the calibration line after your first power on to improve the veracity of ADAS.

Step1: Parking the car in a open field

Step2: Slide right the screen and open the calibration interface

Step3:Adjust the angle of the lens,make the calibration line coincide with the horizon line



F Basic Operation

Slide left the screen and enter into main menu,choose “System setting” to adjust the device parameter.

Update

- Option1: Through Hikdashcam APP
Step1: Power on the device and open Wi-Fi to connect the APP.
Step2: Check the latest SW version in the APP.
Step3: Choose “System setting-SW update”.
Step4: Once firmware updated,device will restart ,then we finished.
- Option2: Compatible with 4G module and detect the latest SW version,can also support download and update (Need compatible with 4G module).

Don't power off during the upgrade

ADAS

Choose “ADAS”,can turn on several intelligent auxiliary driving functions, and the veracity will improved continuously by SW update

Other Parameters

- “System Setting->About device”,check the device and SW version
- “Video recording”can set different resolution.
- “Image Parameter”Can on/off “WDR/Distortion Correction”, suggest to open WDR when the backlight
- “Format SD card”clear the data in the card.
- “G-sensor”turn on,Device will make a emergent video once the car have emergency brake or turn

G Preventions and Cautionary Tips

Aautions for TF cards

- For the stability and efficiency of data storage, Please purchase TF cards from official channels. It is recommended to use TF cards with Class 10 or more than 16G high speed TF card.
- Before pulling out the TF card, please make sure that the equipment is powered off, so as not to damage the TF card.
- It is recommended to format the TF card once a month.
- Please replace the TF card regularly to avoid the TF card exceeding its service life and unable to store data.

Aautions for Capacitor Use

- Super capacitors are built in the equipment. Please do not disassemble or refit the equipment capacitors to avoid capacitor damage.
- Do not discard capacitors or use them in other devices at will. Do not use damaged power supply.
- Do not place capacitors in high temperature or near fire , otherwise capacitors will easily explode.
- Abnormal phenomena such as deformation, excessive temperature and odor are found during the use of capacitors. Please stop using, so as to avoid safety problems.

H Trouble Shooting

Trouble	Solution
The dashcam drops easily.	<ul style="list-style-type: none">• Clean the glass before installation.
Starting dashcam failed.	<ul style="list-style-type: none">• Ensure the automobile started normallyand the power supply is normal.• If no indicator is lighting, reconnect the cigarette lighter.
The dashcam powers off frequently.	<ul style="list-style-type: none">• Ensure the power cord is well.• Ensure the connection between dashcam and power cord is well.
Recording is abnormal and recording indicator is unlit.	<ul style="list-style-type: none">• Ensure the dashcam started normally.• Ensure TF card is installed.• Check TF card status, e.g., itsformat and lifespan. If it is not well,replace it with a good one.
Recorded videos are fuzzy.	<ul style="list-style-type: none">• Tear off the proof film on lens.• Clean the lens and glass.
Audio is not recorded with video.	<ul style="list-style-type: none">• Enable "Tape When Recording" in app.
Connecting the dashcam via app failed.	<ul style="list-style-type: none">• Ensure the app is well installed.• Restart the app and dashcam.

H Trouble Shooting

Trouble	Solution
Playing video via app failed.	<ul style="list-style-type: none">• The trouble may be relevant with the mobile phone player or system.Insert TF card into your computer to play the videos.• TF card on the computer to read requires a dedicated player.
Failed to detect the TF card when connecting the dashcam and your computer with the power cord.	<ul style="list-style-type: none">• The dashcam does not support data transmission. And the power cord is only for charging. If you need to transfer data, take out the TF and connect it to your computer.
It takes a long time to connect the dashcam WiFi.	<ul style="list-style-type: none">• It may be caused by the interference of the surrounding Wi-Fi signals. You can operate the dashcam in an environment with less interference.• Close unnecessary programs in your mobile phone to release some resources for the dashcam app.