

1. Unlock the front cover with the supplied key, open the case of the control panel.
2. Fix the control panel case on the required place with three supplied screws.
3. Fix the SIM card module (Sold separately) with four plastic bolts.
4. Install the telephone module (Sold separately) with two plastic bolts.
5. Wire the cables.

1. Antenna Wiring (Wi-Fi and 3G/4G/GPRS Antenna)
 1. Connect the pin of the pedestal to the terminal on the board or module.
 2. Rotate and fix the antenna on the pedestal.

2 Network Wiring

3 Alarm Input/Alarm Output/RS-485/Power Supply Wiring

Power down the control panel before connecting and disconnecting accessories and peripherals.

- ① Alarm Input Wiring
 - a. NC Detector
 - b. NO Detector
 - c. Unoccupied Zone
 - d. Tamper-proof
- ② Alarm Output Wiring
- ③ RS-485 Wiring: Wireless Receiver, keypad, etc.
- ④ Power Supply Wiring

4 Telephone Module Wiring

6. Close the case of the control panel. Lock the front cover with the supplied key.

2 Set Up

Set up via Web Client

Log Into the Web Client

- Default IP Address when using mobile browser in the AP mode:192.168.8.1. The device must be in the AP mode

- Default IP Address when connecting the network cable with computer directly :192.0.0.64

Input the device IP address in the address bar of the web browser. Create a password to activate the device and log into the web client.

Add a Camera for the Zone

The function varies depending on the model of device.

1. Click System-Network Camera, and you can add cameras for the control panel.
2. Enter the "Device Management" page, select a zone, and select a camera to link with the zone.

You can also link a camera with the zone via APP, refer to the Security Control Panel User Manual for details.

Configure Video-Push

You can view the alarm video via APP and email. For detailed settings, refer to Security Control Panel User Manual.

Set up via APP

1. Log into the App Store and input Hi-Connect to search and install the mobile client.
2. Log into the APP with Hi-Connect account.
3. Tap Add Device. Scan the device QR code on the rear panel (on the label).
4. Tap Connect to a Network. Select Wireless Connection (AP) as the connection mode.
5. Push the AP/STA mode switch to the AP position, tap Confirm.
6. Tap Connect to Wi-Fi on the prompt-up window. Select and connect to a stable Wi-Fi, and click Next.
7. Create a password to activate the device.
8. Push the AP/STA mode switch to the STA position.

Note: You need to enter the Verification Code (on the device label which is pasted on the rear panel) before activation if you add the device by entering the device serial No.(SN).

Set up via iVMS-4200 Client Software

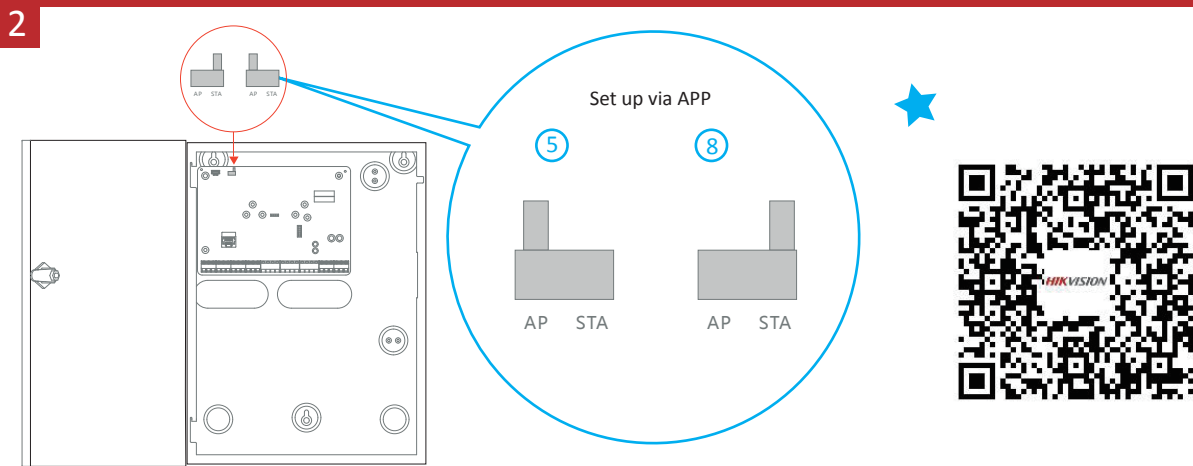
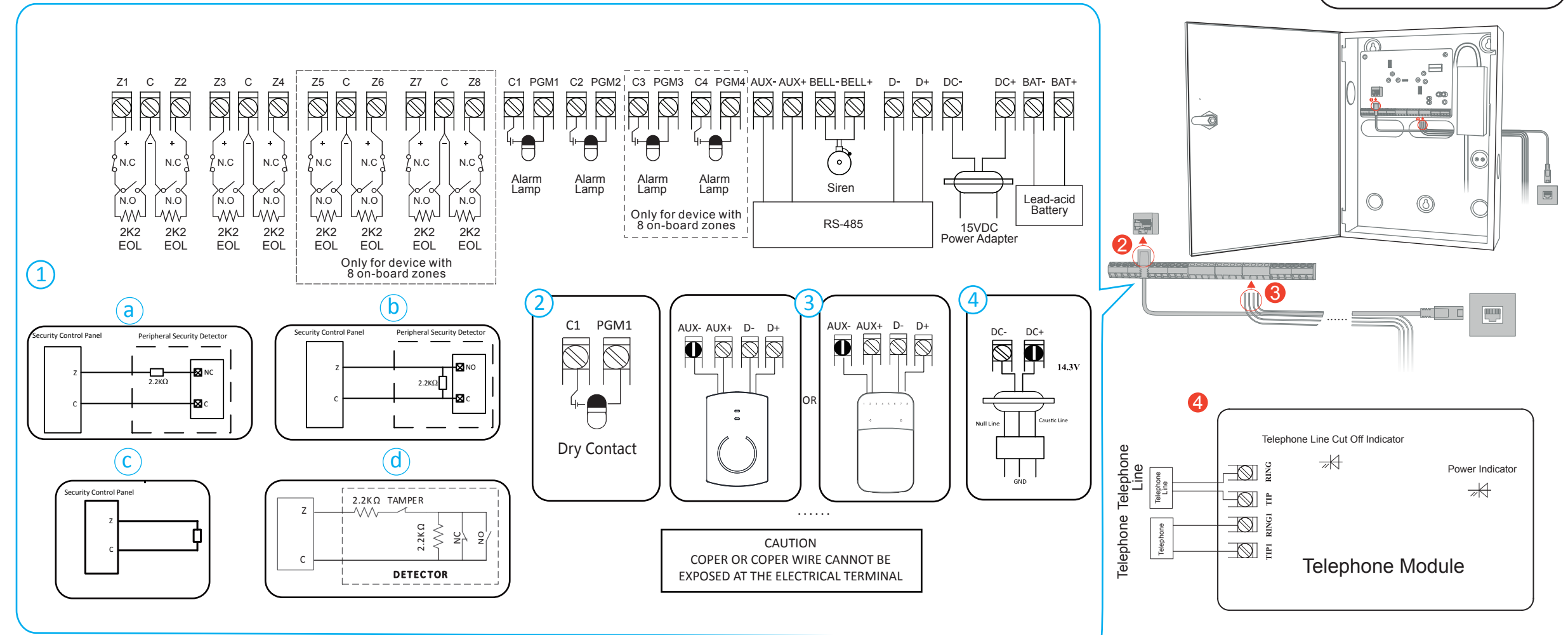
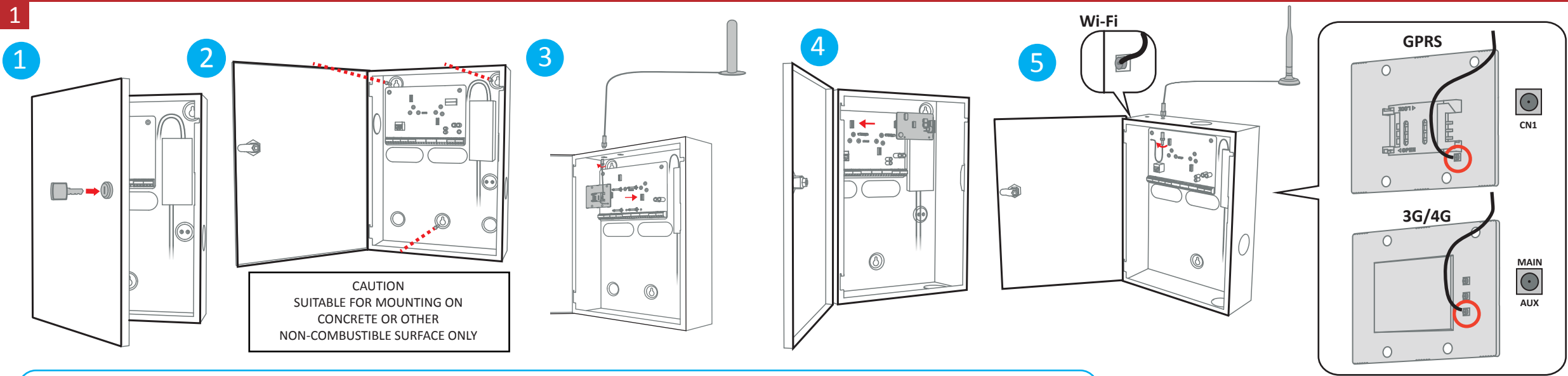
1. Download and install the iVMS-4200 client software.
Note: Get the client software from the official website: www.hikvision.com.
2. Enter Device Management page, select the device in the Online Device List, click Edit Network Settings, change the port as 80, and click Add to Client.

Note: You should activate the device for the first usage.

Specification

Model		DS- PHA64-W4M
Hybrid Security Control Panel with Metal Case		
Device connection	Wireless Detector	Up to 56
	Wireless Output expander	Up to 8
	Siren	1 wired siren (on-board connection) 2 wireless sirens
	Keyfob	8, valid operation interval: 3 s
Alarm input	Partition	8
	Zone	8 on-board zones, and 56 wired/wireless zones expandable
Alarm output	Alarm output	4 on-board outputs, and 60 wired/wireless outputs expandable
	Scheduled arming/disarming	Supported
	SMS notification (with 3G/4G/GPRS module)	Supports up to 8 mobile phone numbers
Application & Protocol	Network camera accessing	4
	Application	iVMS-4200 (client software) Hik-Connect (mobile client)
	Protocol	ISAPI: Supports client software and web client Cloud P2P: Supports cloud P2P privacy protocol CDQ9: ARC accessible (CID/SIA)
Network	Wired network	10M/100M Ethernet
	Cellular Network (with 3G/4G/GPRS module)	Supports remote push- notification to ARC & Cloud
Wi-Fi	Standard	802.11b/g/n
	Encryption	64/128-bit WEP/WPA/ WPA2, WPA-PSK/WPA2-PSK,WPS
	Configuration	AP Mode
	Distance	Indoor: ≤ 50 m Outdoor: ≤ 100 m
Interface & Component	TAMPER Switch	1, front cover tamper-proof
	Network Interface	1, RJ45 10M/100M Ethernet Interface
	Telephone Interface	1, PSTN extender interface
	RS-485 Terminal	1, extended up to 64 inputs/outputs (with RS-485 module), and 9 wired keypads extendable
	Siren Power Interface	1, 12V
User	Battery Interface	Storage battery (-M model)
	User	Installer: 1 Administrator: 1 Manufacturer: 1 Operator: 45
	Tag	12
Others	Operation Temperature	-10 °C to 55 °C (-4 °F to +122 °F)
	Operation Humidity	10% to 90% (No condensing)
	Dimension (W × H × D)	Metal Case: 351.4 mm (13.8") × 261.4 mm (10.3") × 93.3 mm (3.7")

Note:
The 868 Mhz wireless siren can be enrolled to the hybrid control panel via the wireless receiver that is at the address of 9.
The products do not contain the PSTN, 2G, 3G, or 4G function, but support the extension module for PSTN, 2G, 3G and 4G



The AP mode is only Supported by device with Wi-Fi function.

Product Information

COPYRIGHT ©2019 Hangzhou Hikvision Digital Technology Co., Ltd.

ALL RIGHTS RESERVED.

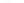
Any and all information, including, among others, wordings, pictures, graphs are the properties of Hangzhou Hikivision Digital Technology Co., Ltd. or its subsidiaries (hereinafter referred to be "Hikivision"). This user manual (hereinafter referred to be "the Manual") cannot be reproduced, changed, translated, or distributed, partially or wholly, by any means, without the prior written permission of Hikivision. Unless otherwise stipulated, Hikivision does not make any warranties, guarantees or representations, express or implied, regarding to the Manual.

About this Manual
This Manual is applicable to the Axiom Security Control Panel Kit.
The Manual includes instructions for using and managing the product. Pictures, charts, images and all other information hereinafter are for description and explanation only. The information contained in the Manual is subject to change, without notice, due to firmware updates or other reasons. Please find the latest version in the company website (<http://overseas.hikvision.com/en/>).
Please use this user manual under the guidance of professionals.

HIKVISION Trademarks Acknowledgement and other Hikvision's trademarks and logos are the properties of Hikvision in various jurisdictions. Other trademarks and logos mentioned below are the properties of their respective owners.

CE This product and - if applicable - the supplied accessories too are marked with "CE" and comply therefore with the applicable harmonized European standards listed under the RE Directive 2014/53/EU, the EMC Directive 2014/30/EU, the LVD Directive 2014/35/EU, the RoHS Directive 2011/65/EU

2012/19/EU (WEEE directive): Products marked with this symbol cannot be disposed of as unsorted municipal waste in the European Union. For proper recycling, return this product to your local supplier upon the purchase of equivalent new equipment, or dispose of it at designated collection points. For more information see: www.recyclethis.info

 2006/66/EC (battery directive): This product contains a battery that cannot be disposed of as unsorted municipal waste in the European Union. See the product documentation for specific battery information. The battery is marked with this symbol, which may include lettering to indicate cadmium (Cd), lead (Pb), or mercury (Hg). For proper recycling, return the battery to your supplier or to a designated collection point. For more information see: www.recyclethis.info

FC

FCC Information

Please take attention that changes or modification not expressly approved by the party responsible for compliance could void the user's authority to operate the equipment.

FCC compliance: This equipment has been tested and found to comply with the limits for a Class B digital device, pursuant to part 15 of the FCC Rules. These limits are designed to provide reasonable protection against harmful interference in a residential installation. This equipment generates, uses and can radiate radio frequency energy and, if not installed and used in accordance with the instructions, may cause interference to radio communications. However, there is no guarantee that interference will not occur in a particular installation. If this equipment does cause harmful interference to radio or television reception, which can be determined by turning the equipment off and on, the user is encouraged to try to correct the interference by one or more of the following measures:

- Reorient or relocate the receiving antenna.
- Increase the separation between the equipment and receiver.
- Connect the equipment into an outlet on a circuit different from that to which the receiver is connected.
- Consult the dealer or an experienced radio/TV technician for help.

This equipment should be installed and operated with a minimum distance 20cm between the radiator and your body.

FCC Conditions

This device complies with part 15 of the FCC Rules. Operation is subject to the following two conditions:

1. This device may not cause harmful interference.
2. This device must accept any interference received, including interference that may cause undesired operation.