

# HIKVISION

## DS-3WF0AC-2NT

### Quick Start Guide

**Quick Start Guide**  
COPYRIGHT ©2019 Hangzhou Hikvision Digital Technology Co., Ltd.  
**ALL RIGHTS RESERVED**  
Any and all information, including, among others, wordings, pictures, graphs are the properties of Hangzhou Hikvision Digital Technology Co., Ltd. or its subsidiaries (hereinafter referred to as "Hikvision"). This user manual (hereinafter referred to as "the Manual") cannot be reproduced, changed, translated, or distributed, partially or wholly, by any means, without the prior written permission of Hikvision. Unless otherwise stipulated, Hikvision does not make any warranties, guarantees or representations, express or implied, regarding to the Manual.  
**About this Manual**  
This Manual is applicable to DS-3WF0AC-2NT.  
The Manual includes instructions for using and managing the product. Pictures, charts, images and all other information hereinafter are for description and explanation only. The information contained in the Manual is subject to change, without notice, due to firmware updates or other reasons. Please find the latest version in the company website (<http://www.hikvision.com/en>). Please use this user manual under the guidance of professionals.  
**Trademarks Acknowledgment**  
**Hikvision** and other Hikvision's trademarks and logos are the properties of Hikvision in various jurisdictions. Other trademarks and logos mentioned below are the properties of their respective owners.  
**Legal Disclaimer**  
TO THE MAXIMUM EXTENT PERMITTED BY APPLICABLE LAW, THE PRODUCT DESCRIBED WITH ITS HARDWARE, SOFTWARE AND FIRMWARE, IS PROVIDED "AS IS", WITH ALL FAULTS AND ERRORS, AND HIKVISION MAKES NO WARRANTIES, EXPRESS OR IMPLIED, INCLUDING WITHOUT LIMITATION, MERCHANTABILITY, SATISFACTORY QUALITY, FITNESS FOR A PARTICULAR PURPOSE, AND NON-INFRINGEMENT OF THIRD PARTY. IN NO EVENT WILL HIKVISION, ITS DIRECTORS, OFFICERS, EMPLOYEES, OR AGENTS BE LIABLE TO YOU FOR ANY SPECIAL, CONSEQUENTIAL, INCIDENTAL, OR INDIRECT DAMAGES, INCLUDING, AMONG OTHERS, DAMAGES FOR LOSS OF BUSINESS PROFITS, BUSINESS INTERRUPTION, OR LOSS OF DATA OR DOCUMENTATION, IN CONNECTION WITH THE USE OF THIS PRODUCT, EVEN IF HIKVISION HAS BEEN ADVISED OF THE POSSIBILITY OF SUCH DAMAGES.  
REGARDING TO THE PRODUCT WITH INTERNET ACCESS, THE USE OF PRODUCT SHALL BE WHOLLY AT YOUR OWN RISKS. HIKVISION SHALL NOT TAKE ANY RESPONSIBILITIES FOR ABNORMAL OPERATION, PRIVACY LEAKAGE OR OTHER DAMAGES RESULTING FROM CYBER ATTACK, HACKER ATTACK, VIRUS'S INFESTION, OR OTHER INTERNET SECURITY RISKS; HOWEVER, HIKVISION WILL PROVIDE TIMELY TECHNICAL SUPPORT IF REQUIRED.  
SURVEILLANCE LAWS VARY BY JURISDICTION. PLEASE CHECK ALL RELEVANT LAWS IN YOUR JURISDICTION BEFORE USING THIS PRODUCT IN ORDER TO ENSURE THAT YOUR USE CONFORMS THE APPLICABLE LAW. HIKVISION SHALL NOT BE LIABLE IN THE EVENT THAT THIS PRODUCT IS USED WITH ILLEGITIMATE PURPOSES.  
IN THE EVENT OF ANY CONFLICTS BETWEEN THIS MANUAL AND THE APPLICABLE LAW, THE LATER PREVAILS.

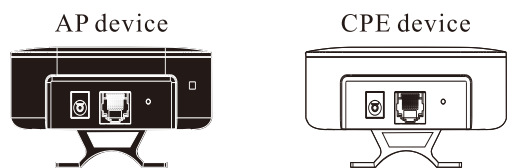
**Regulatory Information**  
**FCC Information**  
Please take attention that changes or modification not expressly approved by the party responsible for compliance could void the user's authority to operate the equipment.  
**FCC compliance:** This equipment has been tested and found to comply with the limits for a Class A digital device, pursuant to part 15 of the FCC Rules. These limits are designed to provide reasonable protection against harmful interference when the equipment is operated in a commercial environment. This equipment generates, uses, and can radiate radio frequency energy and, if not installed and used in accordance with the instruction manual, may cause harmful interference to radio communications. Operation of this equipment in a residential area is likely to cause harmful interference in which case the user will be required to correct the interference at his own expense.  
**FCC Conditions**  
This device complies with part 15 of the FCC Rules. Operation is subject to the following two conditions:  
1. This device may not cause harmful interference.  
2. This device must accept any interference received, including interference that may cause undesired operation.  
**EU Conformity Statement**  
**CE**  
This product and, if applicable, the supplied accessories too are marked with "CE" and comply therefore with the applicable harmonized European standards listed under the EMC Directive 2014/30/EU, the LVD Directive 2014/35/EU, the RoHS Directive 2011/65/EU.  
2012/19/EU (WEEE directive): Products marked with this symbol cannot be disposed of as unsorted municipal waste in the European Union. For proper recycling, return this product to your local supplier upon the purchase of equivalent new equipment, or dispose of it at designated collection points. For more information see: [www.recyclethis.info](http://www.recyclethis.info)  
2006/66/EC (battery directive): This product contains a battery that cannot be disposed of as unsorted municipal waste in the European Union. See the product documentation for specific battery information. The battery is marked with this symbol, which may include lettering to indicate cadmium (Cd), lead (Pb), or mercury (Hg). For proper recycling, return the battery to your supplier or to a designated collection point. For more information see: [www.recyclethis.info](http://www.recyclethis.info)

**Applicable Models**  
This manual is applicable to DS-3WF0AC-2NT.  
**Symbol Conventions**  
The symbols that may be found in this document are defined as follows.  

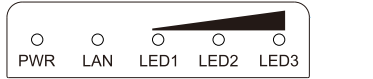
Symbol	Description
	Provides additional information to emphasize or supplement important points of the main text.
	Indicates a potentially hazardous situation, which if not avoided, could result in equipment damage, data loss, performance degradation, or unexpected results.
	Indicates a hazard with a high level of risk, which if not avoided, will result in death or serious injury.

**WARNING**  
During the installation and utilization of the device, please strictly conform to electrical safety rules in different nations and regions.  
You shall acknowledge that the use of the device with Internet access might be under network security risks, please strengthen protection for your personal information and data security. If you find the device might be under network security risks, please contact with us.  
**Packing List**  
Wireless bridge x 2  
PoE injector x 2  
Power adapter x 2  
Expansion bolt x 4  
Screw x 4  
Quick start guide x 1  
If any accessories are damaged or lost, keep the package intact and contact your dealer for replacement.

## 1 Getting to know the devices



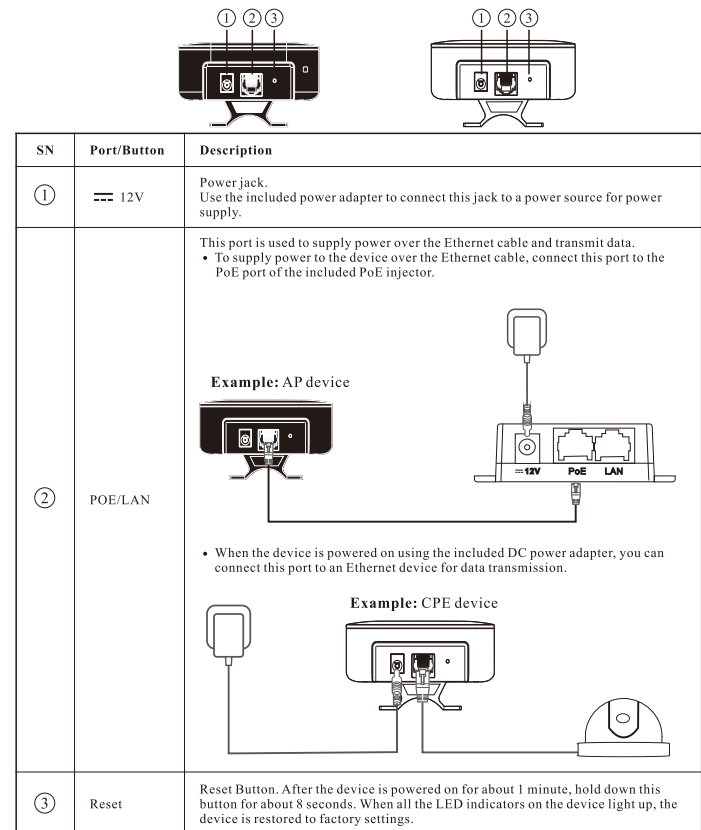
### LED indicators



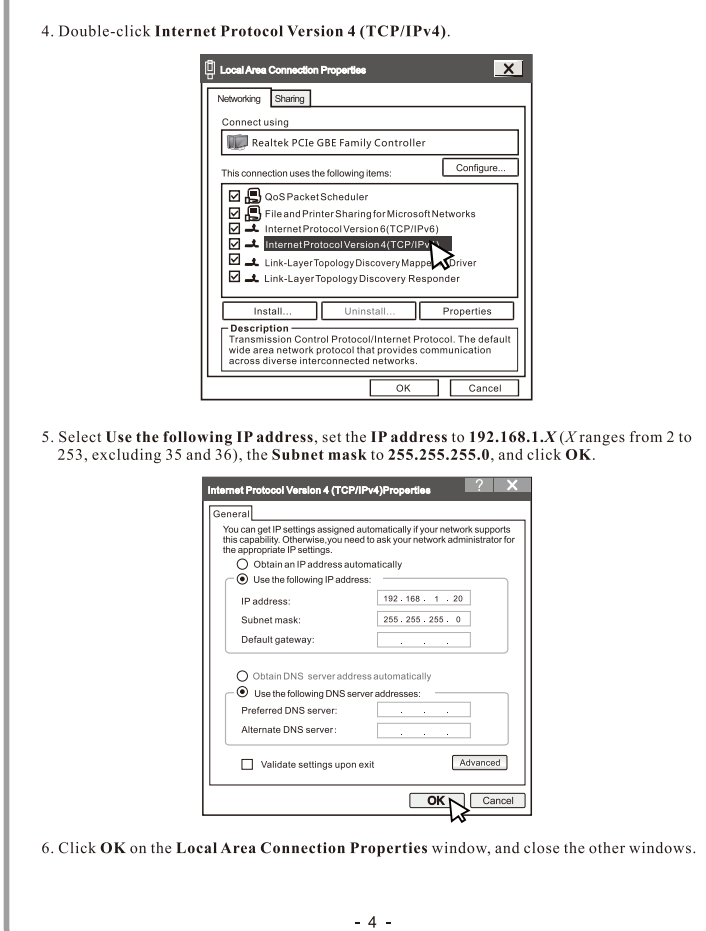
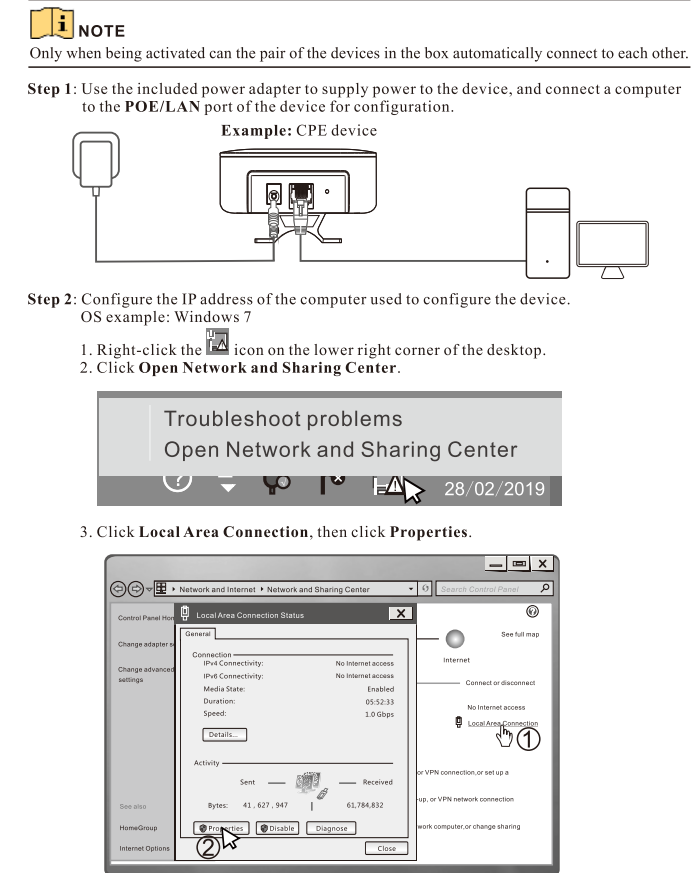
LED indicators are used to monitor the status of devices. See the following table for the description of the LED indicators.

Indicator	Status	Description
PMR	Solid on	The power is supplied to the device properly.
	Off	No power is supplied to the device.
LAN	Solid on	No data is being transmitted over the port.
	Blinking	Data is being transmitted over the port.
LED1/LED2/LED3	Off	The port is not connected, or not connected properly to an Ethernet device.
	Solid on	Bridge successfully. <ul style="list-style-type: none"><li>LED1 and LED2 are solid on, and LED3 is off: Full signal.</li><li>LED1 is solid on, and LED2 and LED3 are off: Weak signal. Please adjust the direction or location of your device.</li></ul>
LED1/LED2/LED3	Off	The received signal strength does not reach the minimum threshold of the signal strength LED indicator.

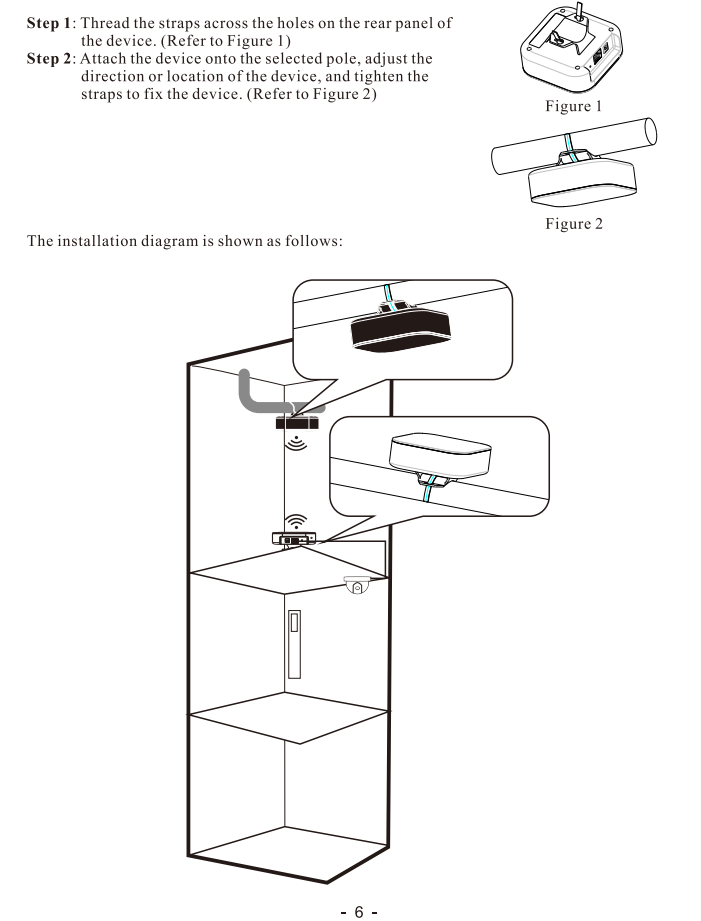
### Port/Button



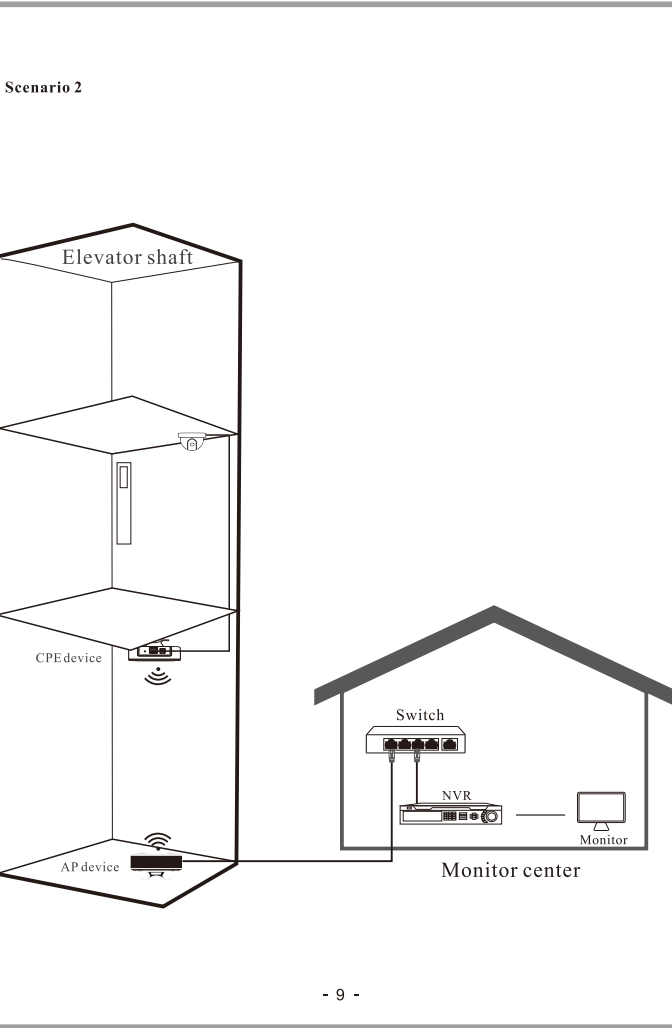
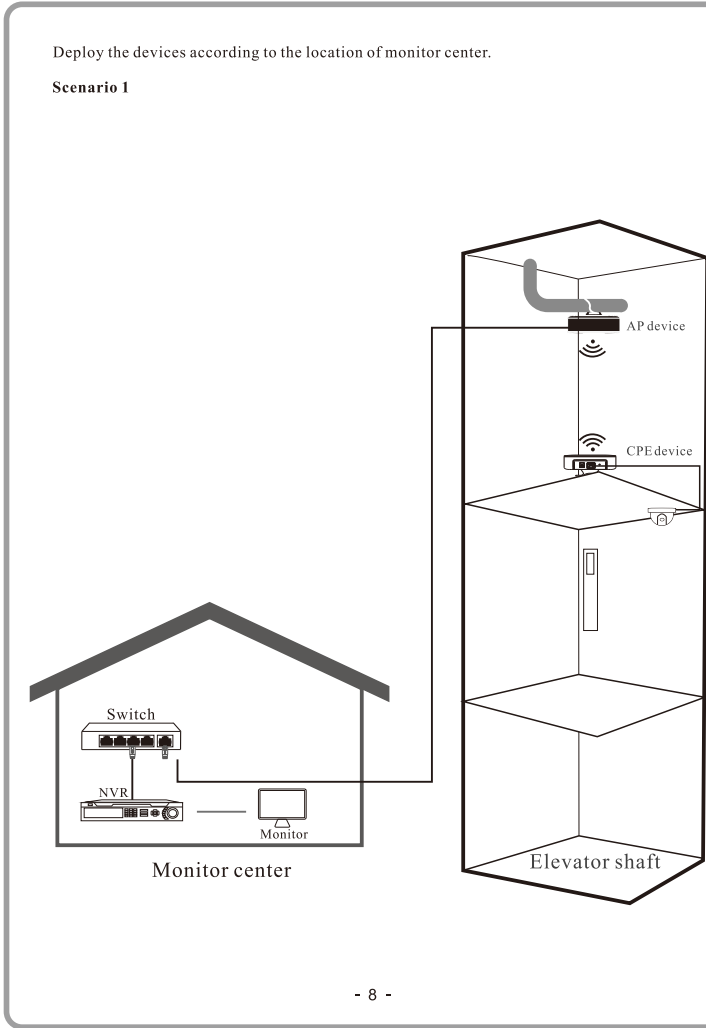
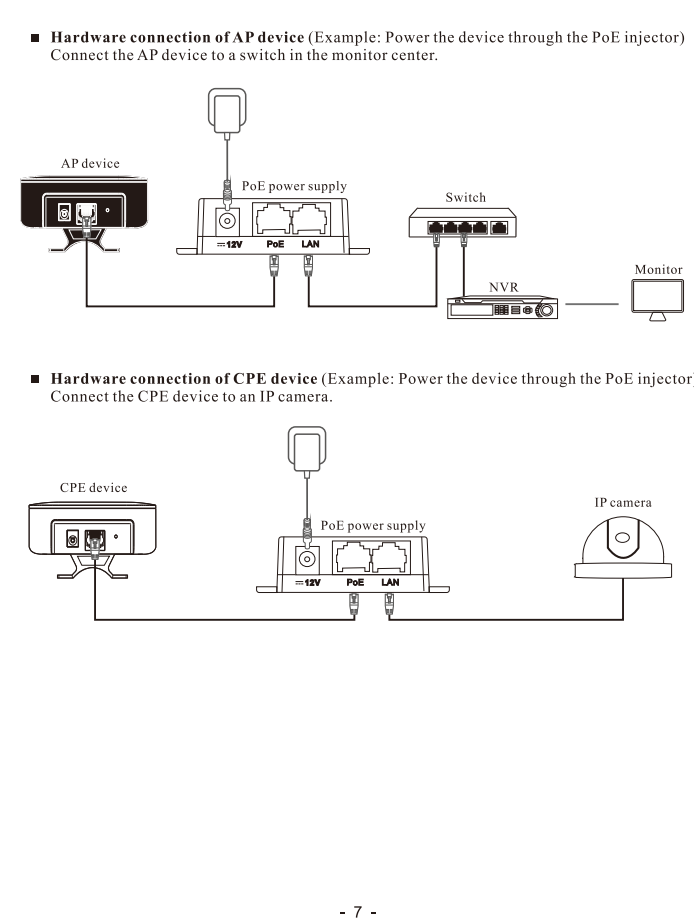
## 2 Login and activating the devices



## 3 Installing the devices



## 4 Connecting the devices



## FAQ

**Q1: I cannot log in to the web UI of the device by entering 192.168.1.35 or 192.168.1.36.**  
What should I do?  
Try the following methods and try again:  
• Ensure that the device has been connected to a power supply and the computer properly.  
• Ensure that the IP address of the login computer is 192.168.1.x (x ranges from 2 to 254, excluding 35 and 36).  
• Reset the device to factory settings.  
**Q2: How to reset the device to factory settings?**  
Note: Resetting the device will clear all settings, and you need to configure it again.  
Method One: 1 minute after the device is powered on, hold down the Reset button for about 8 seconds. When all LED indicators light up, the device is restored to factory settings.  
Method Two: Log in to the web UI of the device, choose System > Maintenance, and click the Reset button.  
**Q3: How to determine whether the bridging signal is optimal when the devices are used for CCTV surveillance?**  
Method One: Observe the LED indicators of the two devices. The bridging signal is at its best when all of the LED1, LED2 and LED3 indicators are solid on.  
Method Two: Log in to the web UI of one device, choose Status > Port Device to check the bridging information. Stronger signal strength (-60 dBm is better than -70 dBm), less background noise (-100 dBm is better than -90 dBm), and faster transmitted/received rate lead to better bridging signal.  
**Q4: After the installation succeeds, the monitors connected to the NVR cannot display the surveillance videos. What should I do?**  
Try the following solutions:  
• Check if all devices are connected properly and work normally.  
• Ensure that the IP addresses of computer, NVR, and IP cameras are in the same network segment.  
• If the preceding check is normal, it indicates the connections are properly. Please check if configuration of the NVR or the IP camera are correct, a broadcast storm occurs or VLANs are assigned in your network.

**Environment requirement**  

Operating temperature	-30°C ~ 55°C
Operating humidity	(10% ~ 90%) RH, non-condensing
Storage temperature	-30°C ~ 70°C
Storage humidity	(5% ~ 90%) RH, non-condensing

**Caution:**  
Adapter Model: BN036-A12012E, BN036-A12012D  
Manufacturer: SHENZHEN HIKVISION NETWORK TECHNOLOGY CO., LTD.  
Input: 108-240V AC, 50/60Hz 6.4A  
Output: 12V DC, 1.0A  
DC Voltage