



Konke Smart Bulb (White) User Guide

FCC ID:2AJZ4-BULBUS

Hangzhou Konke Information Technology Co., Ltd

With Konke smart bulb, you can adjust the brightness and color temperature, and create different lighting atmosphere in different situations. Conveniently switch between different lighting scenarios like bright, warm, reading or night light with different brightness and warmth.



Product Features



Color Temperature Adjustment



Preset Mode



Dimmable Luminance



Timer Switch



Delayed Switch-off



Custom Mode



Remote Control



Group Control

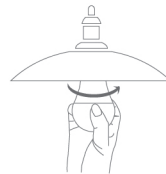
Installation Steps

1 Install the light Bulb

Intalling the light bulb and switching on the power,the warm light(yellow light) will be flashing slowly.

Note:

- 1.If you can not configured success within 2 minutes, and the cold light(white light) flashing, please turn off and reset the bulb.
- 2.If the bulb is slowly flashing with cold light,please switch the power once and return to the warm light slowly.



2 Download the APP

Scan the QR code below to download the "Smart K" app



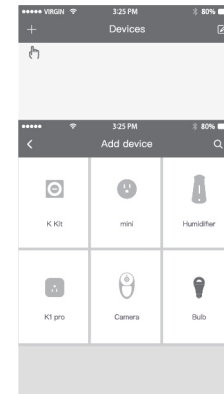
(iOS & Android)

3 Configure the bulb

Clicking the App "Smart K" from your phone,and press the top left corner "+", add the icon "Bulb" from the showed devices list.
Named the bulb as your like, and link it to your exsiting 2.4Gz WIFI network with your password.

>>

Figure as follows:



How to reset the bulb?

Use the light switch to turn the light bulb on and off five times (on for 1~2 seconds, off for 1~2seconds) The light bulb will display low brightness warm light slow lightning.

Warning

- 1 Before using this product, please make sure that your voltage is appropriate for this product's working voltage. Using this product with a voltage other than the one specified may damage the product and cause safety hazards.
- 2 Do not disassemble this product, as the light diodes can cause damage to the eyes.
- 3 The light bulb will heat up when working. Do not use it in a confined holder for an extended period of time. Ensure sufficient ventilation for the light bulb to allow for heat dissipation.
- 4 Do not use with dimmers.

Basic Parameters

Model : KK-BULB-US

Size : 60 x 60 x 108 mm

Luminous flux : 800lm

Color temperature : Tunable White

Rated power input :
120V~ 50/60Hz

Rated power : 9W

Lamp fitting : E26

Wireless connection :
IEEE802.11 b/g/n 2.4GHz

This device complies with part 15 of the FCC Rules. Operation is subject to the following two conditions: (1) This device may not cause harmful interference, and (2) this device must accept any interference received, including interference that may cause undesired operation.
CAN ICES-005 (B) / NMB-005 (B)

Website: www.ikonke.us

Customer Service Email Address:
support@ikonke.com

FCC caution

Federal Communication Commission (FCC) Radiation Exposure Statement

When using the product, maintain a distance of 20cm from the body to ensure compliance with RF exposure requirements.

NOTE: This equipment has been tested and found to comply with the limits for a Class B digital device, pursuant to part 15 of the FCC Rules. These limits are designed to provide reasonable protection against harmful interference in a residential installation. This equipment generates uses and can radiate radio frequency energy and, if not installed and used in accordance with the instructions, may cause harmful interference to radio communications. However, there is no guarantee that interference will not occur in a particular installation.

If this equipment does cause harmful interference to radio or television reception, which can be determined by turning the equipment off and on, the user is encouraged to try to correct the interference by one or more of the following measures:

- Reorient or relocate the receiving antenna.
- Increase the separation between the equipment and receiver.
- Connect the equipment into an outlet on a circuit different from that to which the receiver is connected.
- Consult the dealer or an experienced radio/TV technician for help.

Any changes or modifications not expressly approved by the party responsible for compliance could void the user's authority to operate this equipment.

IC statement

This device contains licence-exempt transmitter(s)/receiver(s) that comply with innovation Science and Economic Development Canada's licence-exempt RSS(s).

Operation is Subject to the following two conditions:

- (1) this device may not cause interference.
- (2) this device must accept any interference, including interference that may cause undesired operation of the device.

Le présent appareil est conforme aux CNR d'Industrie Canada applicables aux appareils radio exempts de licence.

L'exploitation est autorisée aux deux conditions suivantes :

- (1) l'appareil ne doit pas produire de brouillage, et
- (2) l'utilisateur de l'appareil doit accepter tout brouillage radioélectrique subi, même si le brouillage est susceptible d'en compromettre le fonctionnement.

This Class B digital apparatus complies with Canadian ICES-005.

Cet appareil numérique de la classe B est conforme à la norme NMB-005 du Canada.

When using the product, maintain a distance of 20cm from the body to ensure compliance with RF exposure requirements.

Lors de l'utilisation du produit, maintenez une distance de 20 cm du corps afin de vous conformer aux exigences en matière d'exposition aux RF.