

# Mini 5C

ORIGINALITY DESIGN SMART – AND BEAUTIFUL



## QUICK GUIDE



## What's in the box

Please consult this checklist for all parts.



Comet C



Power adapter



USB cable



Adhesive tape



Bracket



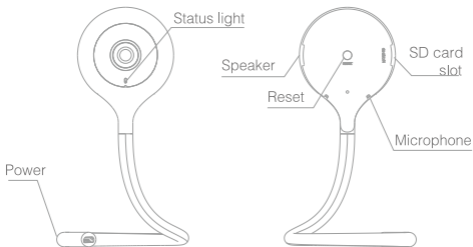
Temperature & humidity sensor



Screws



I/M



## Description

Power DC5V  $\pm$  10%

Status light

- Red light solid on: the camera network is abnormal
- Blinking red light: awaiting WiFi connecting, or currently connecting (faster blinking)
- Blue light solid on: camera running correctly
- Blinking blue light: awaiting manual WiFi configuration, or currently connecting (faster blinking)

Microphone Captures sounds for your video

SD card slot Supports local SD Card storage (Max.128G)

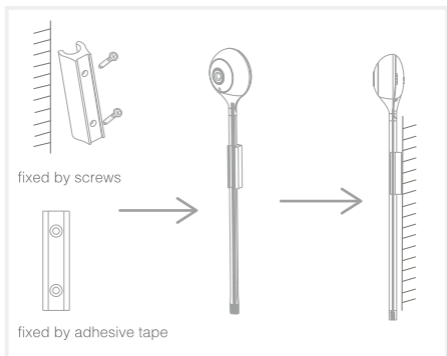
Reset Press and hold for 5 seconds with pin to reset the device(if you have modified settings, they will return to factory defaults)  
Pressing for 1 second will activate manual WiFi setup mode

## Install

- 1 You can position the tail any way you like, it's your call!



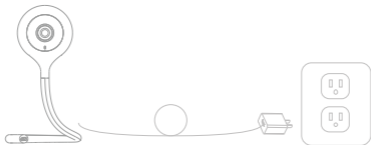
- 2 Fix the camera on a clean surface with the bracket (the bracket can be fixed by screws or adhesive tape)



## Set -Up

### Plug in

Plug the camera into an outlet. An audible sound will play when the system is ready for operation.



### Adding

Download our CamHome Hub app by scanning the following QR codes or searching in your app store. Follow our prompts to finish setup.



your network

### • Support



iOS



iOS



Android



Download App on iOS & Android

## Functions

### Video flip

Flip your video stream vertically anytime for maximum flexibility.

### Baby monitor

Play music for your baby with just a tap.

### Temperature and humidity sensors

See your room's temperature and humidity via our app. ( Please plug the temperature and humidity sensor into the device's tail section )

### Sleep mode

Turn on sleep mode when monitoring is not needed, and resume monitoring when you are away.

### Motion detection

Motion sensors will notify you when movement is detected.

### Record

Record every moment using high capacity SD card storage.

### Day & Night

Powerful night vision means no interruptions, even in complete darkness.



Daytime



Night

## FCC Statement

Any Changes or modifications not expressly approved by the party responsible for compliance could void the user's authority to operate the equipment.

This device complies with part 15 of the FCC Rules. Operation is subject to the following two conditions:

- (1) This device may not cause harmful interference, and
- (2) This device must accept any interference received, including interference that may cause undesired operation.

## FCC Radiation Exposure Statement:

This equipment complies with FCC radiation exposure limits set forth for an uncontrolled environment .This equipment should be installed and operated with minimum distance 20cm between the radiator& your body.

Note: This equipment has been tested and found to comply with the limits for a Class B digital device, pursuant to part 15 of the FCC Rules. These limits are designed to provide reasonable protection against harmful interference in a residential installation. This equipment generates, uses and can radiate radio frequency energy and, if not installed and used in accordance with the instructions, may cause harmful interference to radio communications. However, there is no guarantee that interference will not occur in a particular installation. If this equipment does cause harmful interference to radio or television reception, which can be determined by turning the equipment off and on, the user is encouraged to try to correct the interference by one or more of the following measures:

- Reorient or relocate the receiving antenna.
- Increase the separation between the equipment and receiver.
- Connect the equipment into an outlet on a circuit different from that to which the receiver is connected.
- Consult the dealer or an experienced radio/TV technician for help.