

Speed 3S

ORIGINALITY DESIGN SMART – AND BEAUTIFUL



QUICK GUIDE



What's in the box

Consult the checklist below for all components.



Speed 3S



Power adapter



USB cable



Bracket



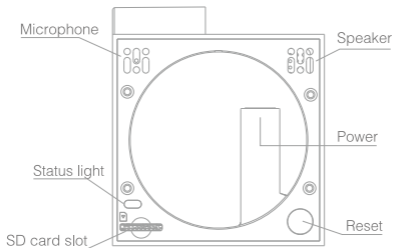
Adhesive tape



Screws



I/M



Bottom of camera

Description

Power DC5V \pm 10%

Status light

- Red light solid on: the camera network is abnormal
- Red light blinked: awaiting WiFi connection, or currently connecting (faster blinking)
- Blue light solid on: camera running correctly
- Blue light blinked: awaiting manual WiFi configuration, or currently connecting (faster blinking)

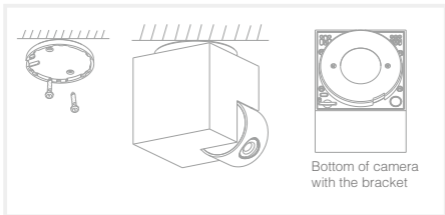
Microphone Captures sound for your video

SD card slot Supports local SD Card storage (Max.128G)

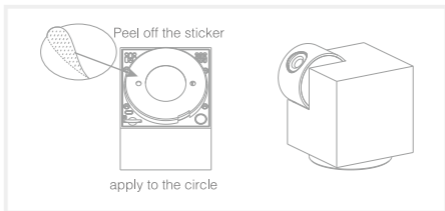
Reset Press and hold for 5 seconds with pin to reset the camera (if you have modified settings, they will return to factory defaults)
Pressing for 1 second will activate manual WiFi setup mode

Install

- 1 Use the included mounting bracket to fix the camera to a clean surface.



- 2 Or, stick the camera to an inclined surface with the adhesive tape we provided.



If required, you can apply the protective strip on Camera's edge to avoid any damage or hurt.



Step 1



Step 2



Step 3

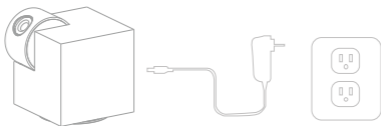


Step 4

Set-Up

Plug in

Plug the camera into an outlet and red light turn to blinking; You will hear an audible tone.....



Adding

Download our Meari app and install it on your smartphone. To find our app, use the following QR codes, or search for it directly. Follow the on-screen instructions to complete setup.



Please keep network available

• Support



Download AppStore & android

Functions

Pan/Tilt

Rotate your camera by sliding on your smartphone, providing you with 360 degrees of vision.

Video flip

Flip your video stream up or down for maximum flexibility.

Motion detection

Built-in motion sensors detect movement, and the camera will send you push notifications and app alerts.

Record

Support 24H continuous recording with high capacity SD storage.

Day & Night

Never miss a moment, even in complete darkness, with powerful night-vision technology.

FCC warnings

Any Changes or modifications not expressly approved by the party responsible for compliance could void the user's authority to operate the equipment.

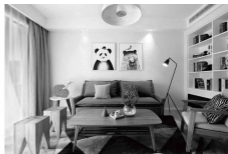
This device complies with part 15 of the FCC Rules. Operation is subject to the following two conditions: (1) This device may not cause harmful interference, and (2) this device must accept any interference received, including interference that may cause undesired operation.

FCC Radiation Exposure Statement:

This equipment complies with FCC radiation exposure limits set forth for an uncontrolled environment. This equipment should be installed and operated with minimum distance 20cm between the radiator & your body.



Daytime



Night