

Smart Camera USER MANUAL

Thank you for purchasing Smart Camera. Get started using your new devices by downloading TuyaSmart, one convenient app that manages everything straight from your phone. Easily connect to your home Wi-Fi and control multiple devices from the touch of your fingertips.

Contents

Download & Register	2-4
Plug In	5
Connect (SmartConfig)	6-7
Connect (QR code net-pairing)	8-9
Questions, Troubleshooting, Notices	10-13

What's in the Box



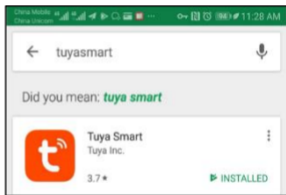
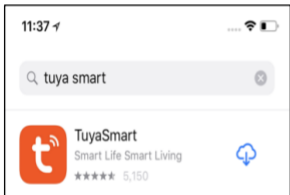
- Smart Wi-Fi Camera
- USB Cable

- Power Adapter
- User Manual

Get Ready

- Know your Wi-Fi network and password
- Make sure your mobile device is running iOS® 8 or higher or Android™ 4.1× or higher
- Make sure you're connecting to a 2.4GHz Wi-Fi network (It can't connect to 5GHz networks)

1 Download the TuyaSmart app from App Store or Google



2

Register an account on your TuyaSmart app

←

Register

United States of America +1 >

Mobile number/e-mail address

Get authentication code

STEP 1.
Enter your mobile phone number or email address.

←

Enter authentication code

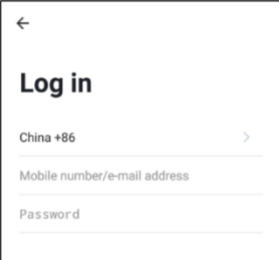
— — — —

A verification code has been sent to your email address: testing@126.com, Resend(53s)

STEP 2.
Enter the verification code and create a password.

2

Register an account on your TuyaSmart



A screenshot of the TuyaSmart app's login screen. At the top left is a back arrow icon. The title "Log in" is centered in a bold font. Below the title is a field for the phone number, with "China +86" on the left and a right-pointing chevron on the right. Underneath is a text input field labeled "Mobile number/e-mail address". Below that is another text input field labeled "Password".

STEP 3.
Login to the
App.

3 Plug in

How do I reset my device?

Use the reset pin to press the Reset Button (as pic 1) for several seconds until the camera starts to beep.

Optional: Insert Micro SD card as shown in pic 2



Pic 1



Pic 2

What does the blinking light mean?



Solid Red
Starting up



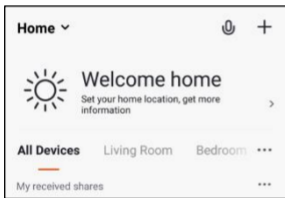
Blinking Red
Ready to connect



Solid Green
Connected

4

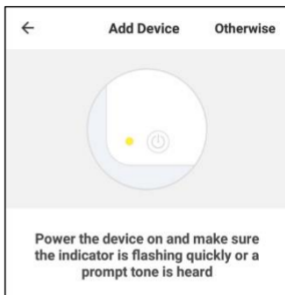
Add device. Method 1: SmartConfig



STEP 1

In the app, on the top corner of the Devices screen, click (+).

Choose "Smart Camera"

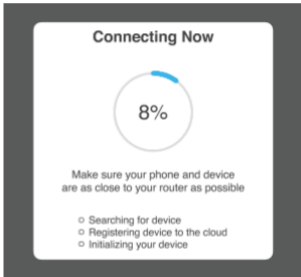


STEP 2

Make sure the indicator light on the device is flashing Red, indicating the device is ready to connect. If not, follow instructions to Reset the device so that indicator light is flashing red.

4

Add device. Method 1: SmartConfig



STEP 3

Enter your Wi-Fi network and password.

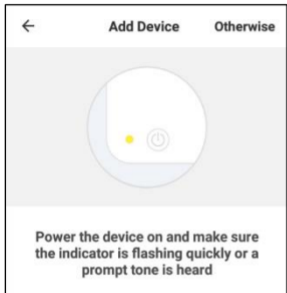
STEP 4

The app will try to connect your device. During this time, the camera will beep, start quickly blinking Red, and then turn solid Green.

*If the connection fails, try to connect directly using QR Code Mode.

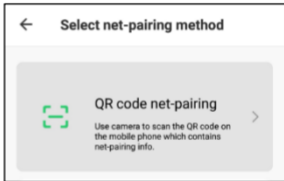
5

Add device. Method 2: QR code net-pairing



STEP 1

In the app, on the top corner of the Devices screen, click (Otherwise)



STEP 2

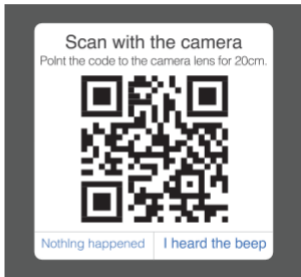
Choose "QR code"

5

Add device. Method 2: QR code net-pairing

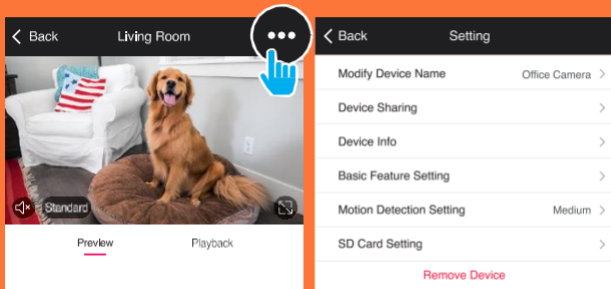


STEP 3
Enter your Wi-Fi network and password.



STEP 4
Scan the QR Code with the camera."

Frequently Asked Questions



1. Can I share with family and friends?

Yes, you can share your cameras with family and friends who will have access to view the camera and control your bulbs, plugs, and other devices. In the app, press the Profile button and click on the "Device Sharing" button, and you will be able to give or revoke sharing permissions. In order to share, the other user should already have downloaded the app and registered a new account.

2. What's the Wireless Range?

The range of your home Wi-Fi is heavily dependent on your home router and the conditions of the room. Check with your router specifications for exact range data.

3. The device appears offline or unreachable?

Make sure your Wi-Fi router is online and in range.

Make sure you have the latest app functionality by clicking "Check for firmware update" in your device settings.

4. Cannot connect to your Wi-Fi network.

Make sure you entered the correct Wi-Fi password during the Wi-Fi setup. Check whether there are any Internet connection problems. If the Wi-Fi signal is too weak, reset your Wi-Fi router and try again.

5. How Many Cameras Can I Control?

TuyaSmart app can control an unlimited amount of devices in an unlimited amount of locations. Your router may have a limit of how many devices can be connected to one router.

System Requirements

- Mobile device running iOS® 8 or higher or Android™ 4.1x or higher
- Existing Wi-Fi Network

Technical Specifications

- Camera: up to 1080p (1920x1080) at 20 frames / sec. H.264 encoding
- Field of View: 140° diagonal
- Audio: Internal Speaker and Microphone
- Storage: supports up to 128G Micro SD card (not included)
- Wi-Fi: IEEE 802.11 b/g/n, 2.4GHz (not compatible with 5GHz Wi-Fi networks)

CE Notice:



CE Products with the CE marking comply with the Radio Equipment Directive (2014/53/EU), the Electromagnetic Compatibility Directive (2014/30/EU), the Low Voltage Directive (2014/35/EU) – issued by the Commission of the European.

Compliance with these directives implies conformity to the following European Standards :

EN300328 V2.1.1

EN301489-1/-17 V2.1.1

EN62368-1:2014+A11:2017

EN55032:2015+AC:2016(ClassB);

EN55035:2017

EN62311:2008

WEEE



This product must not be disposed of as normal household waste, in accordance with EU directive for waste electrical and electronic equipment (WEEE- 2012/19/EU). Instead, it should be disposed of by returning it to the point of sale, or to a municipal recycling collection point.

FCC Statement :

Any Changes or modifications not expressly approved by the party responsible for compliance could void the user's authority to operate the equipment.

This device complies with Part 15 of the FCC Rules. Operation is subject to the following two conditions:

- (1) this device may not cause harmful interference, and
- (2) this device must accept any interference received, including interference that may cause undesired operation.

FCC Radiation Exposure Statement:

This equipment complies with FCC radiation exposure limits set forth for an uncontrolled environment .This equipment should be installed and operated with minimum distance 20cm between the radiator & your body.

Note: This equipment has been tested and found to comply with the limits for a Class B digital device, pursuant to part 15 of the FCC Rules. These limits are designed to provide reasonable protection against harmful interference in a residential installation. This equipment generates, uses and can radiate radio frequency energy and, if not installed and used in accordance with the instructions, may cause harmful interference to radio communications. However, there is no guarantee that interference will not occur in a particular installation. If this equipment does cause harmful interference to radio or television reception, which can be determined by turning the equipment off and on, the user is encouraged to try to correct the interference by one or more of the following measures:

- Reorient or relocate the receiving antenna.
- Increase the separation between the equipment and receiver.
- Connect the equipment into an outlet on a circuit different from that to which the receiver is connected.
- Consult the dealer or an experienced radio/TV technician for help.