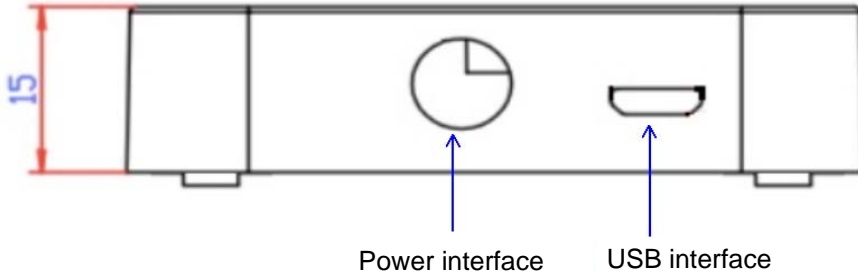


TYGWB1 User Manual

1. Buttons/Status indicator light/Hardware interface

1.1 Buttons



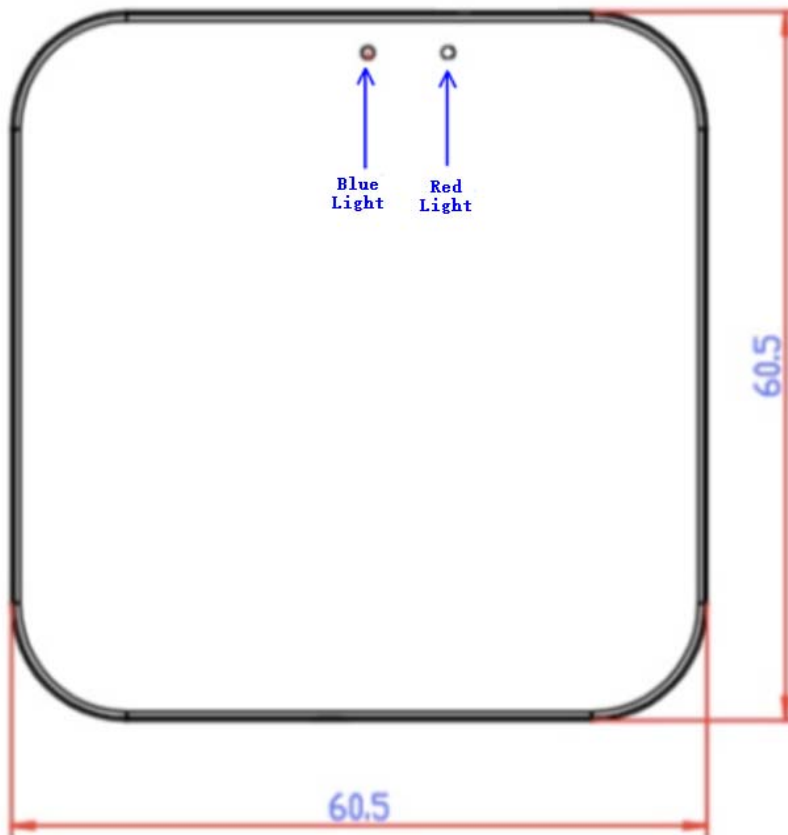
1.2 Status indicator light

Red light: indicate that BLE MESH status:

- Connection mode, The light is always on
- Waiting for connection, the light is blinking

Blue light: indicate that WiFi status:

- Connection mode, The light is always on
- Waiting for connection, the light is blinking
- When the product have been paired before but not connected now, the light will be off



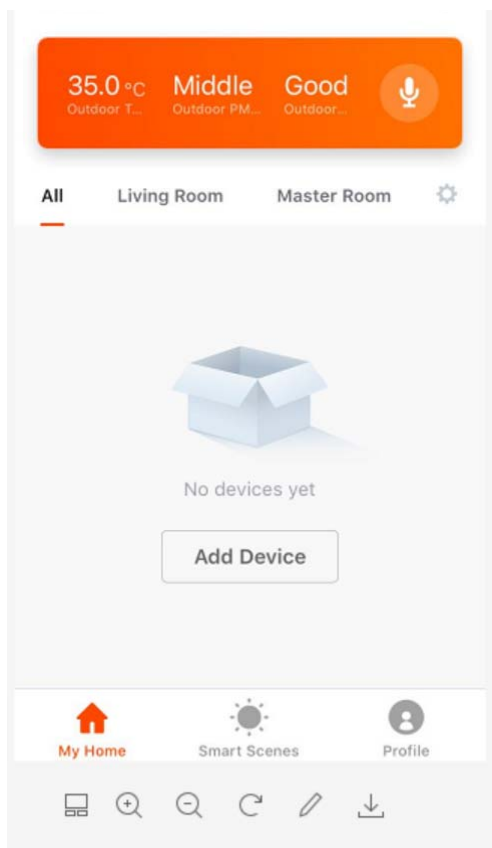
1.3 Hardware interface

Power interface: **USB DC 5V**

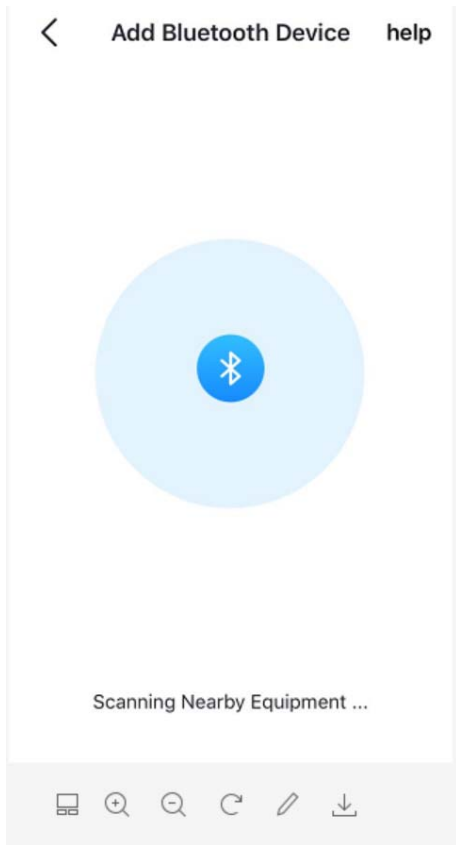
Reset way: long press the button for 3s, then the red light will start blinking several times, means reset successful.

2. Device addition

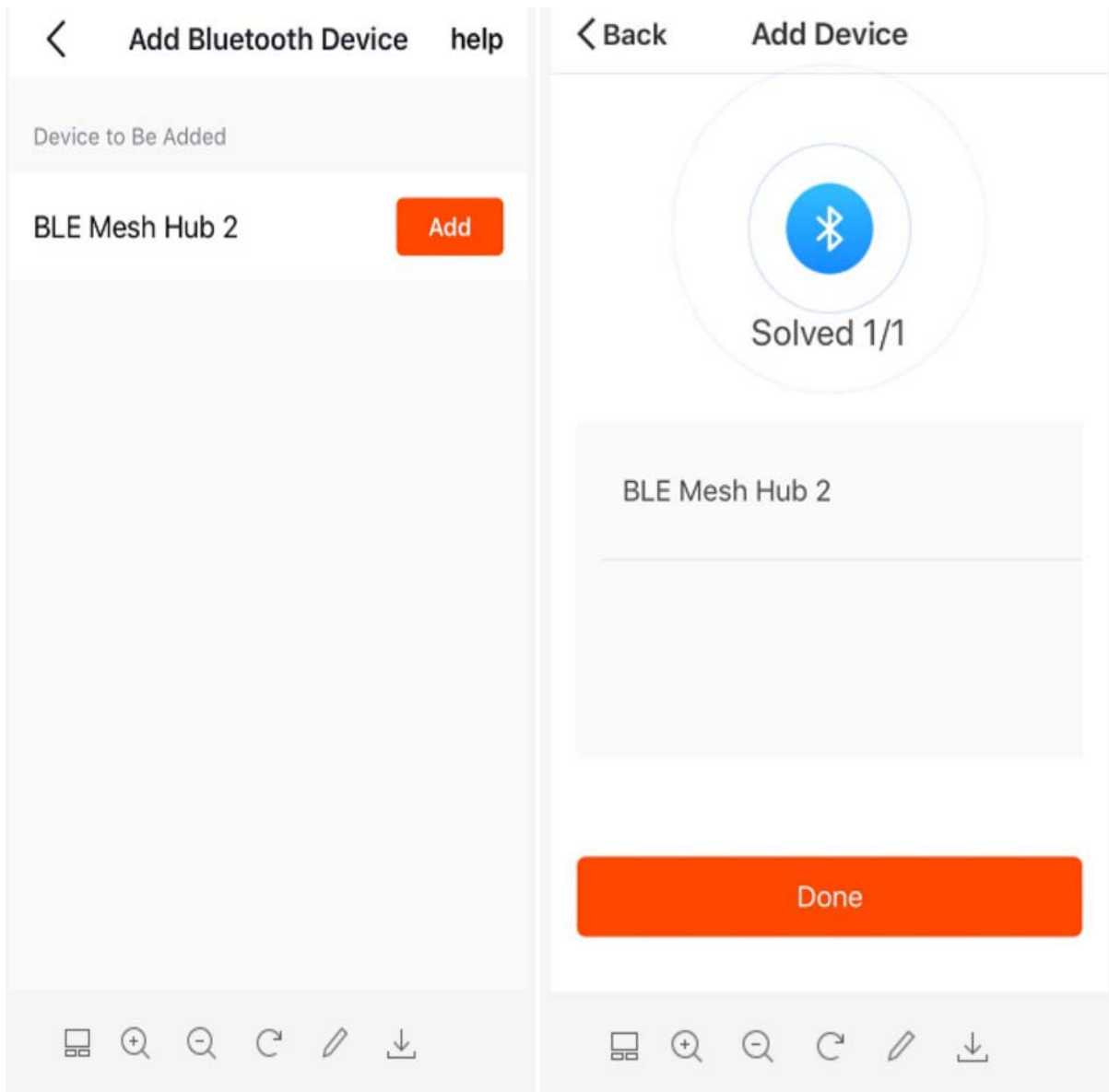
- Just leave factory equipment can be added directly, the equipment plugged in
- Open "Tuya Smart", Make sure that the latest version
- Click the plus "+", Ensure Bluetooth is turned on., Waiting on the current page



- if the correct state, you will see the following figure, searching can be used to add equipment



This will remind to find a name for the new "BLE Mesh Hub2", click the Add button, there is the "Finish" button, ready to add the device



- After adding, the gateway connects to the home router through the WIFI module. At this point, select the SSID and enter the password of the WIFI router on the APP, click the "Confirm" button, and start adding. The progress shows 100%, indicating that the addition is completed.

Cancel

Enter Wi-Fi Password

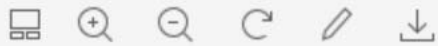


xxl22901

Wi-Fi : tao [Change Network](#)

[Confirm](#)

This app is supported only on 2.4GHz Wi-Fi channels



Cancel

Connecting Now

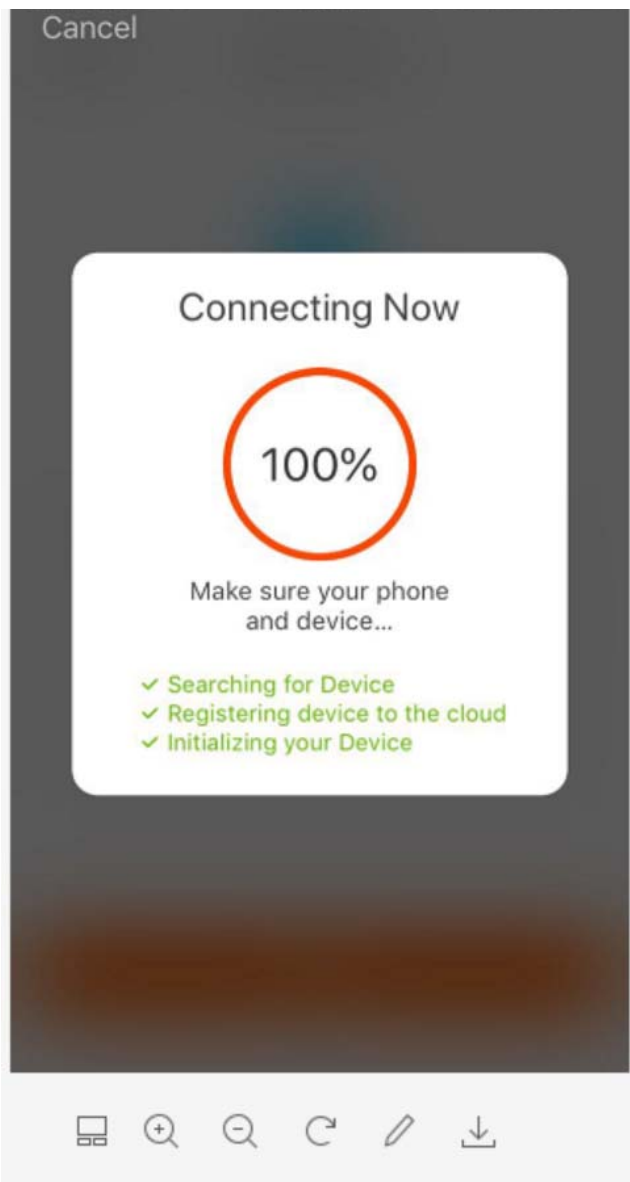


5%

Make sure your phone and device...

Searching for Device
Registering device to the cloud
Initializing your Device





FCC Statement

Any Changes or modifications not expressly approved by the party responsible for compliance could void the user's authority to operate the equipment.

This device complies with part 15 of the FCC Rules. Operation is subject to the following two conditions:

- (1) This device may not cause harmful interference, and
- (2) This device must accept any interference received, including interference that may cause undesired operation.

FCC Radiation Exposure Statement:

This equipment complies with FCC radiation exposure limits set forth for an uncontrolled environment . This equipment should be installed and operated with minimum distance 20cm between the radiator& your body.

Note: This equipment has been tested and found to comply with the limits for a Class B digital device, pursuant to part 15 of the FCC Rules. These limits are designed to provide reasonable protection against harmful interference in a residential installation. This equipment generates, uses and can radiate radio frequency energy and, if not installed and used in accordance with the instructions, may cause harmful interference to radio communications. However, there is no guarantee that interference will not occur in a particular installation. If this equipment does cause harmful interference to radio or television reception, which can be determined by turning the equipment off and on, the user is encouraged to try to correct the interference by one or more of the following measures:

- Reorient or relocate the receiving antenna.
- Increase the separation between the equipment and receiver.
- Co—Connect the equipment into an outlet on a circuit different from that to which the receiver is connected.
- Consult the dealer or an experienced radio/TV technician for help.