



TuyaSmartWi-Fi Module

1. Product Overview

WR5P is a low power consumption module with built-in Wi-Fi connectivity solution designed by Hangzhou Tuya Information Technology Co., Ltd. The Wi-Fi Module consists of a highly integrated wireless radio chip RTL8710BN and some extra flash that has been programmed with Wi-Fi network protocol and plenty of software examples. WR5P include a ARM CM4F, WLAN MAC, 1T1R WLAN, maximum frequency reaches 125MHz, 256K SRAM, 1M byte flash and various peripheral resources.

WR5P is a RTOS platform, embedded with all the Wi-Fi MAC and TCP/IP protocol function examples, users can customize their Wi-Fi product by using these software examples.

1.1 Features

- ✧ Integrated low power consumption 32-bit CPU, also known as application processor
- ✧ Basic frequency of the CPU can support 125 MHz
- ✧ Supply voltage range: 3.3V DC
- ✧ Peripherals: 9 GPIO channels, 1 UART, 1 ADC
- ✧ Wi-Fi connectivity:
 - 802.11 B/G/N20/N40
 - Channel 1 to 11 @ 2.4GHz
 - Support WPA/WPA2
 - +20.67dBm output power in 802.11b mode
 - Support SmartConfig function for both Android and IOS devices

- On-board PCB antenna
- Operating temperature range: -20°C to 85°C

1.2 Main Application Fields

- ✧ Intelligent Building
- ✧ Intelligent home, Intelligent household applications
- ✧ Healthy devices
- ✧ Industrial wireless control
- ✧ Baby monitor
- ✧ Webcam
- ✧ Intelligent bus

2. Dimensions and Footprint

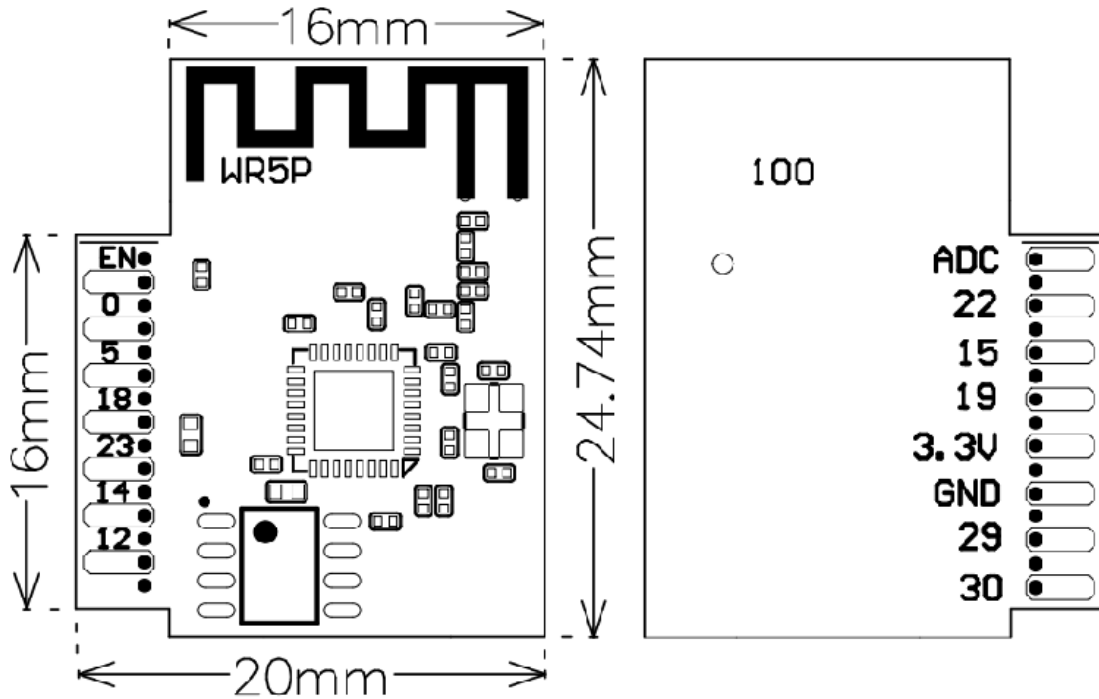
2.1 Dimensions

WR5P has 2 columns of Pins. The distance between each Pin is 2 mm.

Size of WR5P: 16mm(W)*24.74mm(L)*3.5mm(H)

Figure 2 shows the dimensions of WR5P.

Figure 2. The dimensions of WR5P



2.2 Pin Definition

Table 1 shows the general pin attributes of WR5P

Table 2.1 The typical pin definition of WR5P

PIN NO.	NAME	TYPE	DISCREPTION
1	GPIOA_30	I/O	UART_Log_TXD(used to print module's internal information)
2	GPIOA_12	I/O	GPIOA_12
3	GPIOA_29	I/O	UART_Log_RXD (used to print module's internal information)
4	GPIOA_14	I/O	GPIOA_14
5	GND	P	Ground
6	GPIOA_23	I/O	UART0_TXD
7	VD33	P	Supply voltage (3.3V)
8	GPIOA_18	I/O	UART0_RXD
9	GPIOA_19	I/O	GPIOA_19
10	GPIOA_5	I/O	GPIOA_5
11	GPIOA_15	I/O	GPIOA_15

12	GPIOA_0	I/O	GPIOA_0, can not be pull-up while booting, can be used as GPIO while in normal working mode
13	GPIOA_22	I/O	GPIOA_22
14	EN	I/O	External reset signal(low level effects)
15	ADC	AI	ADC terminal(input 5V maximally)

Note: S: Power supply pins; I/O: Digital input or output pins; AI: Analog input.

3. Electrical Characteristics

3.1 Absolute Maximum Ratings

Table 3.1 Absolute Maximum Ratings

PARAMETERS	DESCRIPTION	MIN	MAX	UNIT
Ts	Storage temperature	-40	105	°C
VDD	Supply voltage	-0.3	3.6	V
Static electricity voltage (human model)	TAMB-25°C	-	2	KV
Static electricity voltage (machine model)	TAMB-25°C	-	0.5	KV

3.2 Electrical Conditions

Table 3.2. Electrical Conditions

PARAMETERS	DESCRIPTION	MIN	TYPICAL	MAX	UNIT
Ta	Working temperature	-20	-	85	°C
VCC	Working voltage	3	-	3.6	V
VIL	IO low level input	-0.3	-	VCC*0.25	V
VIH	IO high level input	VCC*0.75	-	VCC	V
VOL	IO low level output	-	-	VCC*0.1	V
VoH	IO high level output	VCC*0.8	-	VCC	V
I _{max}	IO drive current	-	-	16	mA
C _{pad}	Input capacitor	-	2	-	pF

3.3 Wi-Fi Transmitting Current Consumptions

Table 3.3. Wi-Fi TX current consumption

PARAMETERS	MODE	RATE	Transmitting power	TYPICAL	UNIT
IRF	11b	1Mbps	+20.67dBm	287	mA
IRF	11g	6Mbps	+23.45dBm	255	mA
IRF	11n HT20	MCS0	+22.56dBm	244	mA
IRF	11n HT40	MCS0	+19.13dBm	220	mA

3.4 Wi-Fi Receiving Current Consumptions

Table 3.4. Wi-Fi RX current consumption

PARAMETERS	MODE	TYPICAL	UNIT
IRF	CPU sleep	90	mA
IRF	CPU active	120	mA

3.5 Working Mode CurrentConsumptions

Table 3.5 The module working current consumption

WORK MODE	AT TA=25°C	TYPICAL	MAX*	UNIT
EZ Mode	WR5P is under EZ paring mode, Wi-Fi indicator light flashes quickly	115	130	mA
Standby Mode	WR5P is connected, Wi-Fi indicator light is on	50	110	mA
Operation Mode	WR5P is connected, Wi-Fi indicator light is on	120	265	mA
Disconnection Mode	WR5P is disconnected, Wi-Fi indicator light is off	35	90	mA

Note: peak continuous time is about 5us.

The parameter shown above will vary depending on different firmware functions.

4. WLAN Radio Specification

4.1 Basic Radio Frequency Characteristics

Table 4.1 Basic Radio frequency characteristics

PARAMETERS	DESCRIPTION
Frequency band	2412-2462MHz
Wi-Fi standard	IEEE 802.11n/g/b (Terminal 1-11)
Data transmitting rate	11b:1,2,5.5,11(Mbps)
	11g:6,9,12,18,24,36,48,54(Mbps)
	11n:HT20,MCS0~7
	11n:HT40,MCS0~7
Antenna type	On-board PCB Antenna

4.2 Wi-Fi Receiving Sensitivity

Table 4.3 Wi-Fi Receiving sensitivity

PARAMETERS		MIN	TYPICAL	MAX	UNIT
PER<8%, Receiving sensitivity, 802.11b CCK Mode	11M	-	-91	-	dBm
PER<10%, Receiving sensitivity, 802.11g OFDM Mode	54M	-	-75	-	dBm
PER<10%, Receiving sensitivity, 802.11n OFDM Mode	MCS7	-	-72	-	dBm

5. Antenna Information

5.1 Antenna Type

Antenna can be connected using On-board PCB antenna by default.

5.2 Reduce Antenna Interference

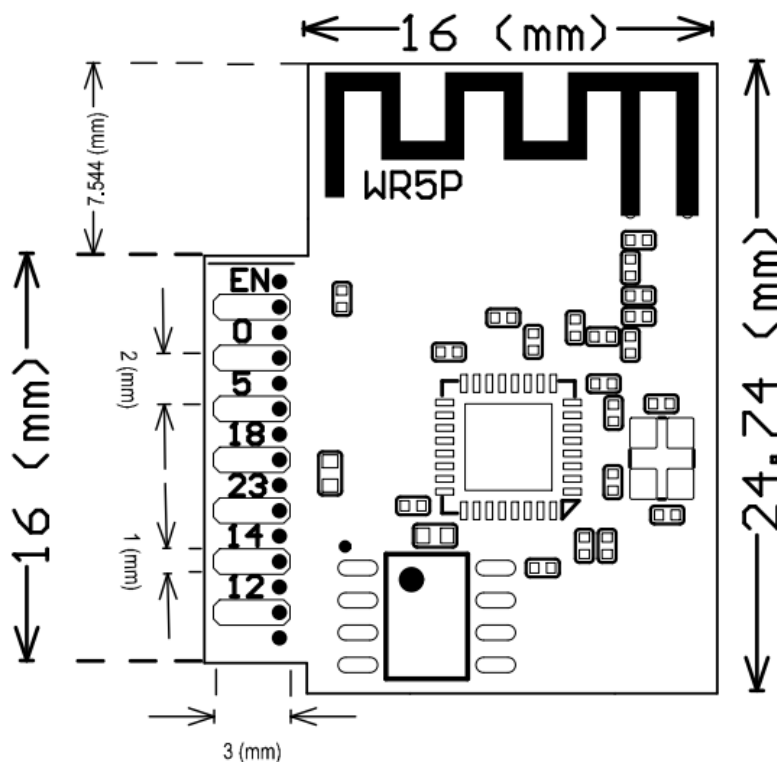
While using the On-board PCB antenna, in order to have the best Wi-Fi performance, it's recommended to keep a minimum 15mm distance between the antenna part and the other metal pieces.

User's own PCBA design is recommended NOT to pass any wire, NOT do copper pour under the region of the module's antenna, to avoid interferences.

6. Packaging Information And Production Guide

6.1 Mechanical Dimensions

Figure 6.1 Top view of the module



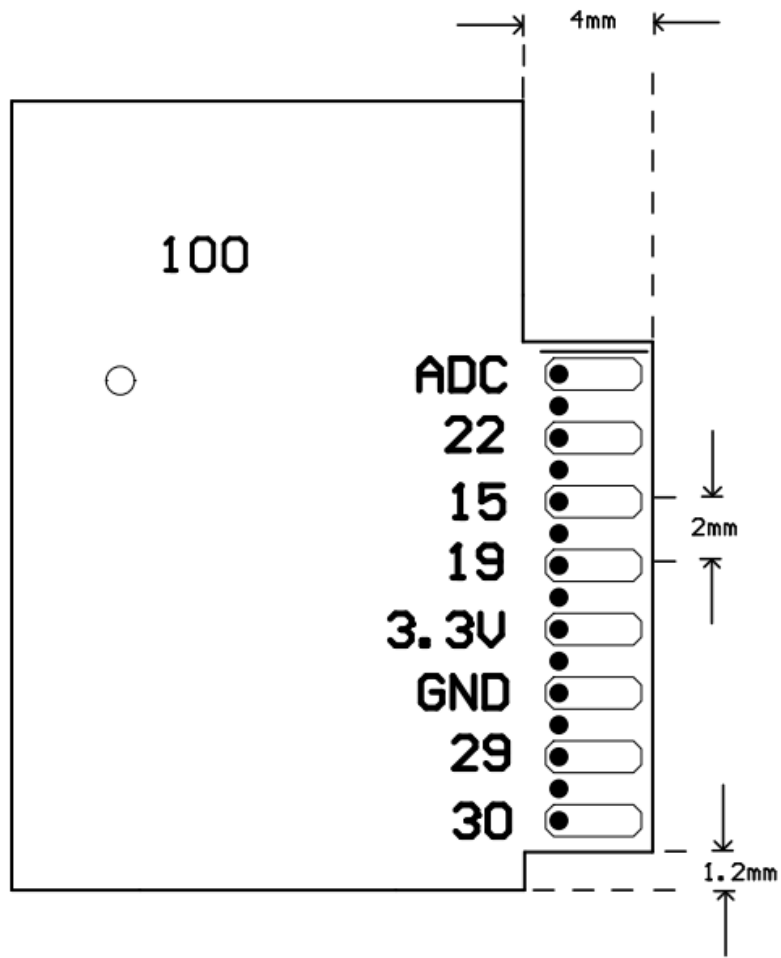
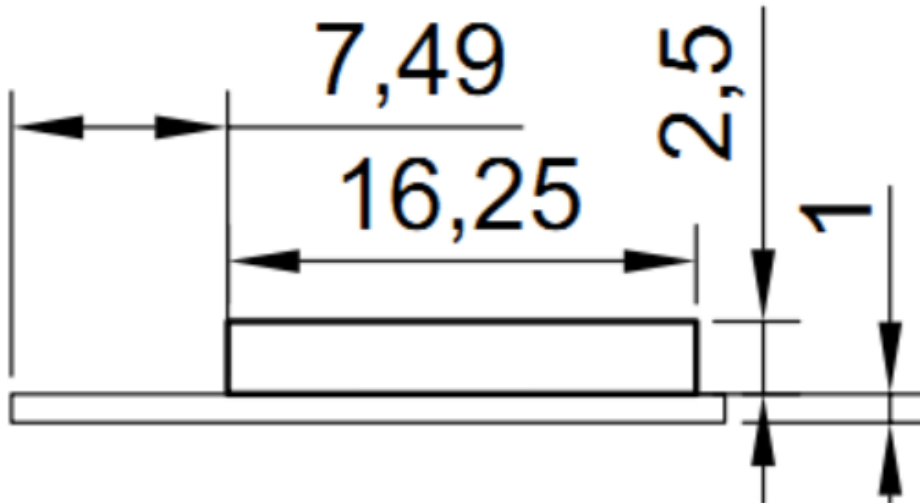


Figure 6.2 Side view of the module



6.2 PCB Recommended Package

Figure 6.3 PCB schematic Drawing

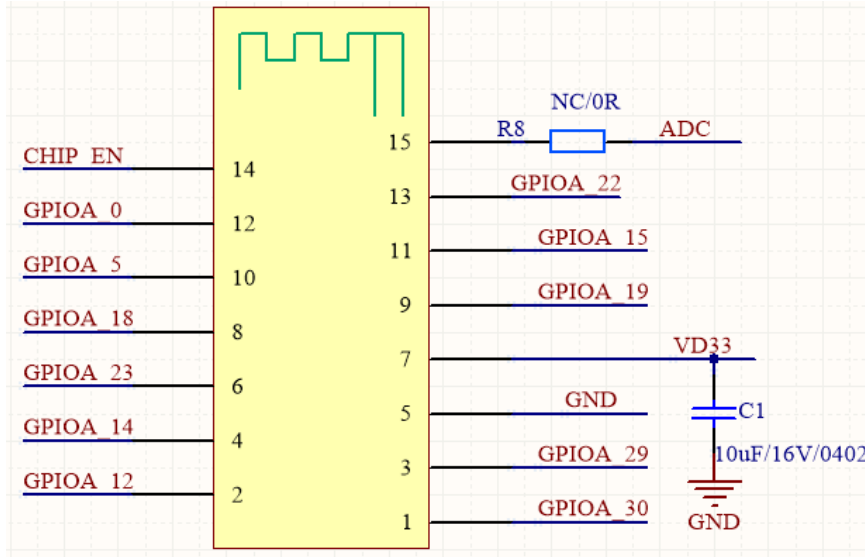
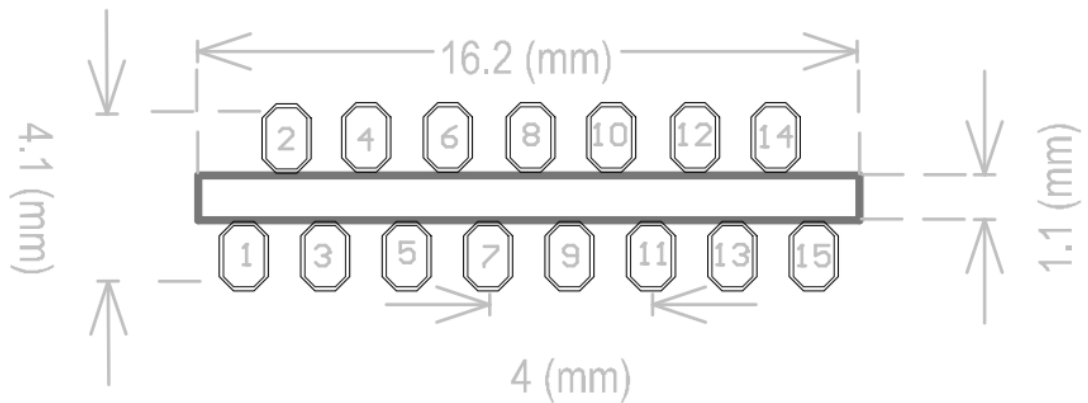


Figure 6.4 PCB footprint Drawing



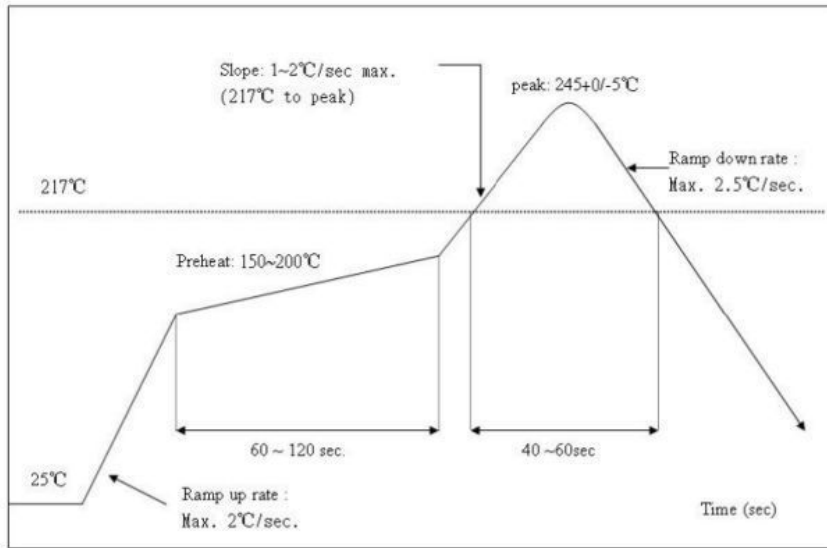
6.3 Production Guide

- ✧ The storage for the delivered module should meet the following condition:
 1. The anti-moisture bag should be kept in the environment with temperature <math>< 30^{\circ}\text{C}</math> and humidity <math>< 85\% \text{ RH}</math>.
 2. The expiration date is 6 months since the dry packaging products was sealed.
- ✧ Cautions:
 1. All the operators should wear electrostatic ring in the whole process of production.
 2. While operating, water and dirt should not have any contact with the modules.

6.4 Recommended furnace temperature curve

Figure 6.5 PCB Package Drawing Recommended furnace temperature curve

Refer to IPC/JEDEC standard ; Peak Temperature : <math><250^{\circ}\text{C}</math> ; Number of Times: $\leq 2</math> times ;$



FCC Statement

Any Changes or modifications not expressly approved by the party responsible for compliance could void the user’s authority to operate the equipment.

This device complies with part 15 of the FCC Rules. Operation is subject to the following two conditions:

- (1) This device may not cause harmful interference, and
- (2) This device must accept any interference received, including interference that may cause undesired operation.

FCC Radiation Exposure Statement:

This equipment complies with FCC radiation exposure limits set forth for an uncontrolled environment .This equipment should be installed and operated with minimum distance 20cm between the radiator& your body.

FCC Label Instructions:

The outside of final products that contains this module device must display a label referring to the enclosed module. This exterior label can use wording such as: “Contains Transmitter Module FCC ID:2ANDL-WR5P”,or “Contains FCC ID:2ANDL-WR5P”, Any similar wording that expresses the same meaning may be used.

Hereby, Hangzhou Tuya Information Technology Co.,Ltd , declares that this Wi-Fi Module is In compliance with the essential requirements and other relevant provisions of Directive 2014/53/EU.

This equipment should be installed and operated with a minimum distance of 20cm between the radiator and your body.

Environment friendly disposal



You can help protect the environment!
Please remember to respect the local regulations: hand in the non-working electrical equipments to an appropriate waste disposal centre.

