



AQ X-Mini

INSTRUCTIONS FOR USE

You have chosen a Hearing System from HANSATON

We take pleasure in your choice and congratulate you on your decision, because with a HANSATON hearing system you own a high-quality product of the most modern technology.

For more than 50 years, we have been helping people with our devices to achieve better hearing and better speech understanding, thus a higher quality of life.

Behind our products stand many years of development and production experience, as a corporate philosophy centered on people and their needs.

If you read this brochure carefully and follow the advice on use and care, you will get much enjoyment from your new hearing system.

This product has passed every phase of the independently-certified HANSATON quality management system.

Contents: AQ Charging Station

Technical description	Page 07
General notes on safety	Page 10
Setting up and using for the first time	Page 13
Setting the clock	Page 13
Travelling with the AQ	Page 14
Functional displays	Page 15
Technical data	Page 30

AQ Hearing Systems

Your Hearing System	Page 08
Intended Use	Page 09
Symbols	Page 10
General Notes on Safety	Page 10
Notes about Batteries	Page 16
Charging the Hearing Systems	Page 16
Which Hearing System Goes in Which Ear	Page 19
Inserting and Removing Your Hearing System	Page 19
Switch Your Hearing System On/Off	Page 20
– Via Pushbutton	Page 20
– Via Remote Control	Page 20
Adjusting Volume	Page 20
– Via Remote Control	Page 20
Switching Hearing Programs	Page 21
– Via Pushbutton	Page 21
– Via Remote Control	Page 21
Hearing Program/Description	Page 21
Optional Functionality	Page 22
– i-com2	Page 22
– Power-on-Delay	Page 22
Advice on Care	Page 23
– Daily Cleaning	Page 23
– Domes and Receiver Molds	Page 24
– Exchanging Domes	Page 25
– Exchanging Double Domes	Page 26
– Exchanging the Receiver Unit	Page 26
Accessories	Page 27
Troubleshooting	Page 28
Technical Information	Page 29
Disposal Information	Page 30
FDA Information	Page 30

Quick Start Guide

Your new AQ Hearing Systems offer the best of hearing system technology in a carefree, easy-to-use, rechargeable system.

Thanks to the revolutionary AQ Inductive Recharging System, you will never have to change a battery to power your AQ Hearing Systems.

Their rechargeable batteries will last for the life of your hearing systems.

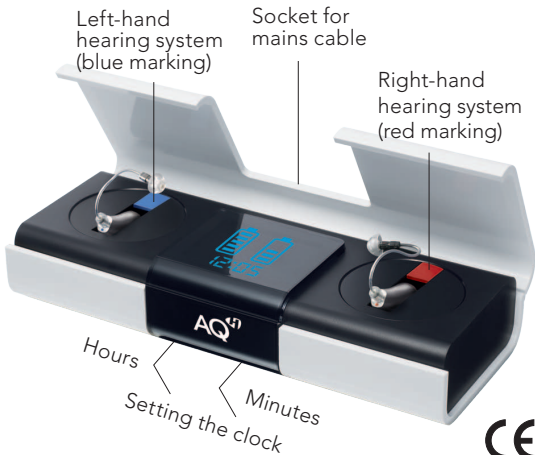
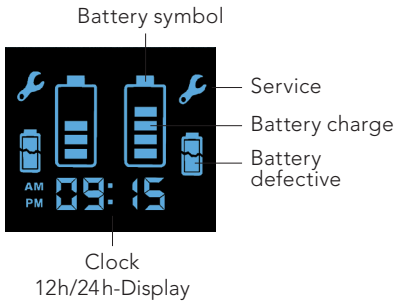
Here are four simple steps to use your hearing systems:

1. Charge your hearing system batteries in the custom AQ Charging Station.
2. Place the hearing systems in your ears; they turn on automatically when removed from the Charging Station.
3. Enjoy the enhanced sound quality and comfort that the AQ systems offer.
4. At the end of the day, place them back in the AQ Charging Station; they will turn off automatically, recharge overnight and be ready for you to use again tomorrow.
Your AQ Hearing Systems are already charged when they are delivered to you.

This User Manual provides all the detail you need to fully understand the operation of your AQ Hearing Systems. The first section it will provide details on recharging with the AQ Charging Station. The second section will give you instructions on how to use your fully charged AQ Hearing Systems.

Feel free to consult with your hearing system professional if you have further questions.

Technical Description of the AQ Charging Station



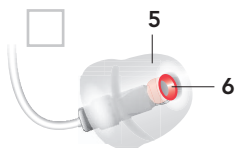
Conformity to
Directives 73/23/EWG
and 89/336/EWG

Red = right ear **Blue** = left ear

Your Hearing System



- S-receiver
- M-receiver
- P-receiver



Features

- 1 Receiver unit
- 2 Dome
- 3 Microphone cover
- 4 Program pushbutton
- 5 Receiver mold
- 6 Cerumen protection



0124

Conformity to directive
93/42/EEC concerning
medical devices

Option: Remote Control

The remote control functions are outlined in a separate instruction manual.



Caution

Risk of injury caused by incorrect use of Domes

- Always wear the Receiver Unit with the Dome.
- Make sure that the Dome is completely attached to the Receiver Unit.
- If the Dome remains in your ear, have it removed by a medical professional.
- Replace the Dome if it breaks.
- Insert the Receiver Unit with the Dome carefully and not too deeply into the ear.
- Use the Receiver Unit and Dome only in the manner described in this user guide.

Your hearing system professional offers an assortment of receiver lengths and Dome sizes to best fit your ear.



Intended Use

Hearing systems are intended to improve the hearing of hearing-impaired persons. Diagnosis of hearing loss and prescription of a hearing system must be performed by hearing health specialists (e.g., ENT specialists, audiologists, or hearing system professionals).

Read and follow the instructions of this user guide to avoid injuries or damage to the hearing system.

Symbols



WARNING! points out a situation that could lead to serious injuries.

CAUTION! indicates a situation that could lead to minor and moderate injuries.



indicates possible property damage.



Advice and tips on how to handle your hearing system better.

• Instruction. Indicates that there is something you must do.



Indicates an option that not every hearing system has. Ask your hearing system professional to check the relevant information.



Attention: Magnet



Forbidden: May not be kept in the vicinity of medical devices (e.g. cardiac pacemakers).



Forbidden: May not be kept in the vicinity of magnetic data media (e.g. bank cards, credit cards).

General Notes on Safety

AQ Charging Station

Always protect your AQ charging station from wet, damp, heat and mechanical effects.

- Operation is prohibited in wet rooms (shower/bathroom) and in areas at risk of explosion.
- Keep out of direct sunlight and do not cover (trapped heat may build up).
- Use only to charge hearing systems with AQ rechargeable battery systems!
- Use only the AQ transport case and not the charging station to transport your AQ battery hearing systems!

- Use only HADEO tissues to clean the outside.
- If the device is not being used for a prolonged period, disconnect the plug from the mains and place the AQ hearing systems in the transport case.
- Please also follow the instructions for the hearing instruments.
- The AQ charging station monitors the AQ hearing systems and informs you at regular intervals about servicing visits required to your hearing instrument professional.

**WARNING!**

If the AQ charging station is damaged, disconnect it from the mains immediately and have the device checked by your hearing instrument professional!

Special Note

The transport case of the AQ system is fitted with magnets and may therefore not be kept in the vicinity of magnetic data media (e.g. bank cards, credit cards) and medical devices (e.g. cardiac pacemakers), as magnetic fields can affect electronic devices and data media.

Only a professional can reliably exclude effects on medical devices, in particular.

**WARNING!**

Magnets may interfere with the operation of medical devices (e.g., pacemakers and magnetic valves).

- Use a magnet only if not in doubt about the safe distance.
- The safe distance between pacemaker and magnet should be at least 10 cm (4 inches).

**WARNING!**

- Keep magnets away from children.

If swallowed consult a physician or hospital immediately.

**NOTICE**

Magnets can disturb electrical devices and delete stored data.

- Keep magnets away from computers, color monitors, television sets, floppy discs, video and audio discs and other electronic equipment / devices.

Hearing Systems

Your hearing system is sensitive to extreme heat, high humidity, strong magnetic fields (>0.1T), Xrays, and mechanical stress.

- Do not expose your hearing system to extreme temperature or high humidity.
- Do not leave it in direct sunlight.
- Do not wear it in the shower or when you apply makeup, perfume, aftershave, hairspray, or suntan lotion.
- Do not wear your hearing system when you are exposed to shortwaves, a strong magnetic field, a high frequency field, or X-rays.
- Do not place your hearing systems in the microwave.

i When using mobile telephones, however, electromagnetic-field effects cannot be ruled out.



WARNING!

Choking hazard posed by small parts.

- Keep hearing systems, batteries, and accessories out of children's reach.
- If swallowed, immediately consult a physician or hospital.
- If infants, small children, or mentally disabled persons need to wear hearing systems, ensure adequate supervision.



WARNING!

Risk in explosive environments (e.g., mining areas)!

- Don't use your hearing systems (and remote control) in areas where there is a danger of explosions.

i In some countries restrictions on the use of wireless equipment exist.

- Consult local authorities for further information.



WARNING!

- Never use a tip that has been worn by someone else or if it becomes dirty, torn, or disfigured.
- Only use original tips. Tips from other manufacturers will not yield the best performance or proper fit.
- Do not insert the hearing system if you think you may have a foreign object in the ear canal.
- The hearing system and tips are made of modern non-allergenic materials. Still, in rare cases, skin irritation can occur. If you experience discomfort or skin irritation in the ear or in the ear canal, discontinue use, and contact your Physician immediately.

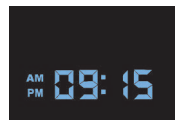
- If tip is lodged in your ear canal, please see a Physician immediately to ensure it is safely removed.

AQ Charging Station Setting up and Using for the First Time

- The AQ charging station is for charging your hearing systems. (The AQ hearing systems are already charged when delivered.)
- Place the AQ charging station on a flat surface (none metallic) where it is easy to see.
- Do not position the AQ charging station in the immediate vicinity of magnetic data media, televisions, monitors, cardiac pacemakers or other electrical medical devices.
- Please ensure that the AQ charging station is not in the transmission path of infrared remote controls.
- Plug the mains cable into the socket on the rear of the charging station.
- The integrated clock which is visible indicates operational readiness.
- In stand-by mode, the AQ charging station uses so little power that you only need to take the mains plug out of the socket if you are going to be away for a prolonged period.

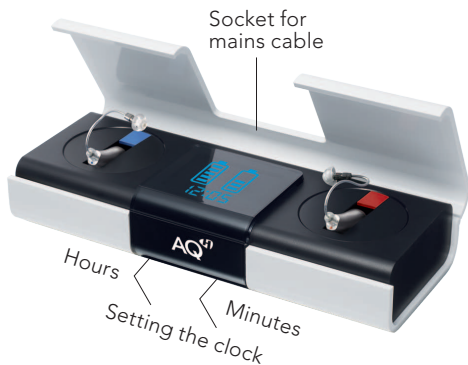
Setting the Clock

- The charging station is supplied with the time preset.
- In order to switch between a 12-hour display (AM/PM) and a 24-hour display, press the two buttons located on the underside of the AQ charging station for at least 5 seconds.
- The time can be set underneath the AQ charging station. Please press any key for 3 sec. (colon of the clock display flashes permanently), adjust clock time, display automatically changes back into normal clock mode (colon of clock display blinks).
- You cannot make any changes to the time during the charging process.



You Can Take the AQ Travelling

- Its flat Euro connector and automatic voltage detection mean that you can also use the AQ abroad or on 110 V supply networks. An adapter may be required in individual instances.



Functional Displays



Charging station not working
(power supply unit not connected to mains)
No display: clock in passive mode



Charging station operational
(power supply unit connected to mains)
Clock in operation

Hearing system
left right



Clock in operation
Hearing systems inserted
Bottom bar in Battery symbol turns on after approx. 3 sec.
After approx. 5 sec., the bars start pulsing upwards.

Hearing system
left right



Clock working
Charging complete, battery full, Battery symbol lit permanently with all bars.



Clock in operation
Hearing systems with defective rechargeable battery (or accidentally with battery) inserted.
Bottom bar in Battery symbol turns on after approx. 3 sec.
After approx. 5 sec. or later during the charging process, the defective battery and Service symbols are blinking simultaneously.

Hearing system
left right



Clock in operation
Hearing system(s) with service requirement inserted.
Bottom bar in Battery symbol turns on after approx. 3 sec.
After approx. 5 sec., the bars start pulsing upwards. The Service symbol also flashes.

AQ Hearing Systems

Information about the Batteries

- Your system uses a maintenance-free metal hydride rechargeable battery.
- You must **never** remove batteries from the device.
- You must **never** put batteries in your mouth! For these reasons, keep batteries out of reach of children.
- If a battery is inadvertently swallowed, seek medical advice immediately!
- Do not dispose of defective batteries in household waste or burn them; return them to your hearing instrument professional for disposal.



SAFETY INSTRUCTIONS

Never attempt to recharge batteries that are not designed for that purpose (danger of explosion)!

When you try to charge batteries, the charging station displays the „Service“ and „Defective battery“ symbols plus the „Battery“ symbol with one bar. The charging process is stopped.



The charging process

- The AQ charging station is equipped with an intelligent charging processor which automatically ends the charging process as soon as the AQ hearing systems are fully charged.
- Charging takes max. 8 hours (depending on battery charge level). You should therefore charge your hearing systems overnight.
- Please note that the full capacity of your batteries will only be available after a number of charging cycles to charge your hearing systems fully.

Inserting Hearing Systems in the AQ Charging Station

- Please clean your hearing systems using a HADEO Cleaning Tissue.
- Completely open the lid of the AQ charging station.
- Place the hearing systems in the right place in the charging station (right = **red** / left = **blue**).
- The hearing systems switch off automatically when the charging station is operational (mains plug connected).
- **It is essential to leave the lid of the charging station open during the charging process to allow the devices to dry.**
- Due to the charging time and the automatic drying of your AQ hearing systems, we recommend regular charging overnight.



Starting the Charging Process

- After you have placed your hearing systems in the correct depressions, the bottom bars in the Battery symbols will turn on after about 3 seconds. The charging process then starts automatically.
- Charging of the hearing system starts after approx. 5 seconds. The bars in the Battery symbol pulse upwards.
- If the Service symbol of your charging station flashes, the battery will still be charged. We recommend consulting your hearing instrument professional.
- If the „Defective battery“ and „Service“ symbols flash at the same time, please consult your hearing instrument professional.



Interrupting the Charging Process

- The hearing systems can be removed from the charging station or put back into the AQ charging station at any time during the charging process.
- If the hearing systems are removed prematurely, the hearing systems may have a reduced running time.



End of the Charging Process

- The AQ charging station uses a processor to control intelligent charging of the hearing system.
- The time this takes is based on the residual capacity of the battery in your hearing system and takes a max. of 8 hours.
- After charging is complete, the AQ charging station ends the charging process automatically and switches to stand-by mode. Next to the clock display, all the bars of the Battery symbol come on permanently.
- The hearing systems can now be removed from the AQ charging station.



Removing the Hearing Systems

- Once charging is complete, you can remove your hearing systems from the AQ charging station.
- The Battery symbol turns off and only the time remains visible. Your hearing systems switch on automatically with a time delay of approx. 6, 12 or 18 seconds.
- If the hearing systems are removed prematurely, they may have a reduced running time.
- If you should not wish to wear your hearing system, you must place it in the AQ transport case (for travelling). Alternatively, the hearing system can also be left in the AQ charging station (at home).

Which System Goes in Which Ear:

A color indicates for which ear the hearing system has been optimized.

Red = right ear **Blue** = left ear

Inserting and Removing Your Hearing System

Do not use lubricant when you insert the Dome/Receiver Mold because it may clog the sound outlet.

- For hearing systems with Receiver Mold, handle by holding the Receiver Mold. Do not pull the tube.

Inserting Your Hearing System

- Turn your hearing system off.
- Hold the receiver with the Dome/Receiver Mold between your thumb and index finger, and insert it carefully into the ear canal. You may find it helpful to pull your ear slightly upward or to the back.
- Place your hearing system behind your ear.
- Your AQ hearing system switches on automatically.

Removing Your Hearing System

- Hold the Receiver Unit/Receiver Mold between your thumb and index finger and carefully pull it out. You may find it helpful to lightly push your ear from the back.

Switch hearing system on/off

- Your AQ hearing system switches on/off automatically.
- Your hearing system always starts in the first hearing program.
- The hearing system is switched on automatically after approx. 6, 12 or 18 seconds by being removed from the locating depression of your charging station/from your transport case.
- It is switched off automatically by being inserted in the locating depression of the operational charging station (mains supply unit connected) or in your transport case.
- The respective insert of your AQ charging station may not be removed!

Via Pushbutton

Switch On

- Press the pushbutton for 2 seconds.

Switch Off (Stand by)

- Press the pushbutton for 2 seconds.

Via Remote Control

- Refer to the remote control user guide.

Adjusting volume

Manual volume control is not required on the AQ hearing system, as it has automatic volume control.

Via Remote Control

- Refer to the remote control user guide.

Switching between hearing programs

Via Pushbutton

- Use the program button to select one of the hearing programs individually programmed for you.
- When changing, your hearing system uses signal sounds to indicate which program you have selected.
The number of signal sounds is based on the relevant program (e. g., 1st program: 1 signal sound, 2nd program: 2 signal sounds, 3rd program: 3 signal sounds, 4th program: 4 signal sounds, 5th program: melody beep).
- You can thus adjust your system to the relevant hearing situation and for example, make use of the advantages of MultiMic technology, especially in conversation in groups.

Via Remote Control

- Refer to the remote control user guide.

Hearing Program/Description

1	
2	
3	
4	
5	

Optional Functionality

Your hearing system professional can activate or deactivate the following functionalities.

i-com2

- Automatically adjusts both hearing systems simultaneously to changes in the hearing system settings (e.g., volume and program).
- Allows use of a remote control.

i The performance of i-com2 may be affected by electromagnetic interference –for example, from a computer monitor or halogen lamp system controlled by a switching power supply.

- Move away from the source of interference if you experience difficulty.

Power-on-Delay

- Allows you to turn the hearing systems on with an automatic delay of 6, 12, or 18 seconds to avoid feedback (whistling).

Advice on Care

Daily Cleaning

You are advised to use our HADEO care products to clean your hearing system. These products were developed specifically for this purpose and are available exclusively from your hearing system professional.

Do not put the hearing systems in water.

- Clean hearing systems regularly to prevent damage to the hearing systems and to avoid health problems.
- Clean your hearing system with a cleaning tissue.
- If the hearing systems sound distorted or weak, ask your hearing system professional to exchange the microphone cover.
- The hearing system must be kept dry. Please put it in a HADEO DryBox, HADEO Drying Bag or Drying Container overnight to extract any moisture from the inside of the system.



Care Primer

Our HADEO care primer can be obtained from your hearing system professional who will be glad to advise you on any questions you may have about caring for your system.



Advice on Care

Domes and Receiver Molds



CAUTION!

Risk of injury caused by incorrect use of Domes.

- Always wear the receiver unit with the Dome/ receiver mold.
- Make sure that the Dome/receiver mold is completely attached to the receiver unit.
- If the Dome/receiver mold remains in your ear, have it removed by a medical professional.
- Replace the Dome/receiver mold if it breaks.
- Insert the receiver unit with the Dome/receiver mold carefully and not too deeply into the ear.
- Use the receiver unit and Dome/receiver mold only in the manner described in this user guide.

Your hearing systems have one of the following earpieces:

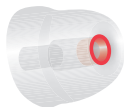
Dome



Double Dome



Receiver Mold



- Clean Domes and receiver molds right after removing the hearing systems. This way, cerumen (earwax) cannot dry and harden.
- Remove cerumen with a soft tissue.
If necessary, moisten the tissue with a cerumen solvent.

i Full functionality of Domes and Receiver Molds is only assured with a working wax guard.

- Do not disassemble the Receiver Mold yourself. Ask your hearing system professional for help when the Receiver Mold needs extensive cleaning.

Domes and Receiver Molds are easily damaged when handled incorrectly.

- Never use running water or immerse the hearing systems.

Advice on Care

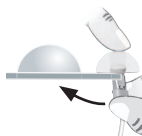
Exchanging domes

The packaging of your dome has a slot on one side to remove the dome from the receiver.

- Hold the dome tight while tilting the receiver towards the packaging (refer to the picture).



- Hold the dome tight while tilting the receiver towards the packaging (refer to the picture).



- Click the tip of the receiver unit into a new dome.



Exchanging double domes

- Remove the used double dome from the receiver. Tilt the double dome to get it off the receiver.
- Click the tip of the receiver unit into a new double dome.

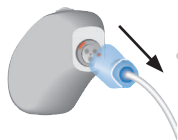


Exchanging the Receiver Unit

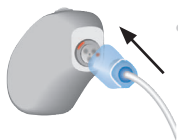
i The Receiver Unit can be changed as needed by your hearing system professional. If you need to replace the Receiver Unit by yourself, follow these directions carefully.



- Turn Receiver Unit 45° counterclockwise.



- Remove Receiver Unit.



- Connect Receiver Unit to hearing system. Marks must line up.



- Turn Receiver Unit 45° clockwise.

Accessories

Remote Control eMote2

The wireless function of your hearing systems allows you to use a remote control to change the program and volume of your hearing systems. For detailed information and instructions, refer to the user guide, or ask your hearing system professional.

i In case the hearing system is controlled by another person's remote control, return to your hearing system professional with your remote control and hearing systems.



Remote Control miniMedia/Media

Your hearing systems together with the miniMedia/Media remote controls will allow you to connect your hearing systems to the growing world of technology. Via a special Bluetooth connection it is possible to receive audio signals from your mobile, your television or your mp3-player. For detailed information and instructions refer to the user guides or ask your hearing system professional.



Troubleshooting

Should a problem occur, you can usually correct it quickly. Use the following troubleshooting tips to resolve simple issues.

If you still encounter problems after trying these suggestions, consult your hearing system professional.

Problem	Possible Cause	Possible Solution
Sound is weak.	Weak or dead battery Dome/receiver mold clogged. Volume too low.	Charge hearing systems. Clean or change Dome/receiver mold. Increase volume (with remote control). Change microphone cover.
System emits whistling sound.	Improper positioning in ear. Volume too high. Clogged with wax or excessive wax in ears.	Try reinserting Dome/receiver mold until it fits securely. Lower volume (with remote control). Clean Dome/receiver mold.
Sound is distorted.	Volume too high. Weak battery.	Lower volume (with remote control). Charge hearing systems. Clean Dome/receiver mold.
System emits signal tones.	Weak battery.	Charge hearing systems.
System does not work.	System is not turned on. Weak battery. Power-on-delay is active.	Turn the hearing system on. Charge hearing systems. Wait 18 seconds and check again.

Technical Information

FCC-ID: WU7-WL005BTE

Operating frequencies: $F_c = 3.28$ MHz

Changes or modifications not expressly approved by the party responsible for compliance could void the users authority to operate the equipment.

This device complies with Part 15 of the FCC Rules.

Operation is subject to the following conditions:

- (1) this device may not cause harmful interference, and
- (2) this device must accept any interference received, including interference that may cause undesired operation.

This equipment has been tested and found to comply with the limits for a Class B digital device, pursuant to Part 15 of the FCC Rules. These limits are designed to provide reasonable protection against harmful interference in a residential installation. This equipment generates, uses and can radiate radio frequency energy and, if not installed and used in accordance with the instructions, may cause harmful interference to radio communications. However, there is no guarantee that interference will not occur in a particular installation. If this equipment does cause harmful interference to radio or television reception, which can be determined by turning the equipment off and on, the user is encouraged to try to correct the interference by one or more of the following measures:

- Reorient or relocate the receiving antenna.
- Increase the separation between the equipment and receiver.
- Connect the equipment into an outlet on a circuit different from that to which the receiver is connected.
- Consult the dealer or an experienced radio/TV technician for help.

Technical data AQ charging station

Nominal voltage:	100-240 V ~
Frequency:	50/60 Hz
Power consumption:	max. 5 W
Charging time:	max. 8 h (depending on level to which battery is charged)

Only for usage in closed premises.

Disposal Information

 Recycle the device and batteries according to national regulations.

With the CE marking HANSATON confirms compliance with the European Directive 93/42/EEC concerning medical devices.



FDA Information (Valid for USA only)

Use Your Hearing Systems All Day Long

The best way to ensure better hearing is to practice listening with your hearing systems until you are able to wear them comfortably all day. Generally, infrequent use of the hearing system does not provide you with the full benefit of amplification.

Your hearing systems will not restore normal hearing. Hearing systems will not prevent or improve hearing impairment resulting from a physiological condition. Hearing systems will help you to make better use of your residual hearing.

The use of hearing systems is only part of hearing rehabilitation; auditory training and lip reading instruction may be required as well.

Possible Side Effects

The hearing system or earmold is a custom-made product. If you are experiencing discomfort, see your audiologist or hearing system profession-

al immediately for modification of the hearing system or earmold at the point of irritation. A hearing system or earmold may cause an accelerated accumulation of cerumen (earwax). Also in rare cases, the otherwise non-allergenic material may cause a discharge from the ear, allergic reaction, or any other unusual condition. Please seek immediate consultation with a physician if these conditions occur.

Warning to Hearing System Professionals

A hearing system professional should advise a prospective hearing system user to consult promptly with a licensed physician (preferably an ear specialist) before dispensing a hearing system if the hearing system professional determines through inquiry, actual observation, or review or any other available information concerning the prospective user, that the prospective user has any of the following conditions:

- (i) Visible congenital or traumatic deformity of the ear.
- (ii) History of active drainage from the ear within the previous 90 days.
- (iii) History of sudden or rapidly progressive hearing loss within the previous 90 days.
- (iv) Acute or chronic dizziness.
- (v) Unilateral hearing loss of sudden or recent onset within the previous 90 days.
- (vi) Audiometric air-bone gap equal to or greater than 15 decibels at 500 hertz (Hz), 1000 Hz and 2000 Hz.
- (vii) Visible evidence of significant cerumen accumulation or a foreign body in the ear canal.
- (viii) Pain or discomfort in the ear.

Special care should be exercised in selecting and fitting a hearing system whose maximum sound pressure level exceeds 132 decibels because there may be risk of impairing the remaining hearing of the hearing system user.

Important Notice for Prospective Hearing System Users

Good health practice requires that a person with a hearing loss have a medical evaluation by a licensed physician (preferably a physician who specializes in diseases of the ear) before purchasing a hearing system. Licensed physicians who specialize in diseases of the ear are often referred to as otolaryngologists, otologists, or otorhinolaryngologists. The purpose of medical evaluation

is to assure that all medically treatable conditions that may affect hearing are identified and treated before the hearing system is purchased.

Following the medical evaluation, the physician will give you a written statement that states that your hearing loss has been medically evaluated and that you may be considered a candidate for a hearing system. The physician will refer you to an audiologist or a hearing system professional, as appropriate, for a hearing system evaluation.

The audiologist or hearing system professional will conduct a hearing system evaluation to assess your ability to hear with and without a hearing system. The hearing system evaluation will enable the audiologist or dispenser to select and fit a hearing system to your individual needs.

If you have reservations about your ability to adapt to amplification, you should inquire about the availability of a trial-rental or purchase-option program. Many hearing system professionals now offer programs that permit you to wear a hearing system for a period of time for a nominal fee after which you may decide if you want to purchase the hearing system.

Federal law restricts the sale of hearing systems to those individuals who have obtained a medical evaluation from a licensed physician. Federal law permits a fully informed adult to sign a waiver statement declining the nominal fee after which you may decide if you want to purchase the hearing system.

Federal law restricts the sale of hearing systems to those individuals who have obtained a medical evaluation from a licensed physician. Federal law permits a fully informed adult to sign a waiver statement declining the medical evaluation for religious or personal beliefs that preclude consultation with a physician. The exercise of such a waiver is not in your best health interest and its use is strongly discouraged.

Children with Hearing Loss

In addition to seeing a physician for a medical evaluation, a child with a hearing loss should be directed to an audiologist for evaluation and rehabilitation since hearing loss may cause problems in language development and the educational and social growth of a child. An audiologist is qualified by training and experience to assist in the evaluation and rehabilitation of a child with a hearing loss.

Identification Information

The year of manufacture is incorporated into the serial number. The warranty is based upon the date of purchase, not date of manufacture. The serial number may look similar to this sample: AJ12345. The second letter of this serial number refers to the date of manufacture of the hearing system. The letters progress in one-year increments, each reflecting the corresponding year. The letter J means the year of manufacture is 2002, the letter K indicates that the manufacture year is 2003, and so on. Your hearing system professional can answer any questions you may have about the identifying code on your hearing system.



OTHER WARNINGS!

- Do not use your hearing system in potentially explosive environments.
- If you experience dizziness, drainage or bleeding from the ear, or sudden hearing loss, see your Physician immediately.
- A hearing system may cause an accelerated accumulation of cerumen (earwax).
- Keep hearing systems out of the reach of children, pets, and individuals with diminished mental capacity.
- Hearing systems should be used only as directed and adjusted by your trained hearing system professional.
- A hearing system may stop functioning, e.g. if the battery goes dead. You should be aware of this possibility, in particular if you are in traffic or otherwise depend on warning sounds.
- Do not switch hearing systems between ears or allow others to wear or use your hearing systems.
- HEARING SYSTEMS WILL NOT RESTORE NORMAL HEARING AND WILL NOT PREVENT OR IMPROVE A HEARING IMPAIRMENT RESULTING FROM ORGANIC CONDITIONS.
- IN MOST CASES, INFREQUENT USE OF A HEARING SYSTEM DOES NOT PERMIT USER TO ATTAIN FULL BENEFIT FROM IT.
- THE USE OF THE HEARING SYSTEM IS ONLY PART OF HEARING HABILITATION AND MAY NEED TO BE SUPPLEMENTED BY AUDITORY TRAINING AND INSTRUCTION IN LIP READING.

