

Hanse



MicroScope

HVS-CM500PC(USB) User's guide

Reg. No. 249826 for Micro scope & Reg. No. 0246851 for multi-functional zoom camera as a practical new device field in Korean Intellectual Property Office

· Thank you for purchasing Hanse Microscope

Warning : Please read this user's guide prior to use.
Never use this product for observing your or other people's eyes as LED light cause eye's injury.

1. Contents

1. Contents	2
2. Caution	3
3. Main features	4
4. Application	5
5. Composition	6
6. Name of each part	6
7. How to use the mirror for ear observation	7
8. Applicable system network	7
9. Specifications	8
10. Install of Hardware	9
11. Install Program	12
12. Warranty	23

2. Caution

This user's guide shows you exactly the features and specifications of Hanse Microscope HVS-CM500PC(USB). For safe and right use please read this user's guide and relevant cautions before using or installation.

Please keep this user's guide where you can get it easily whenever you need.

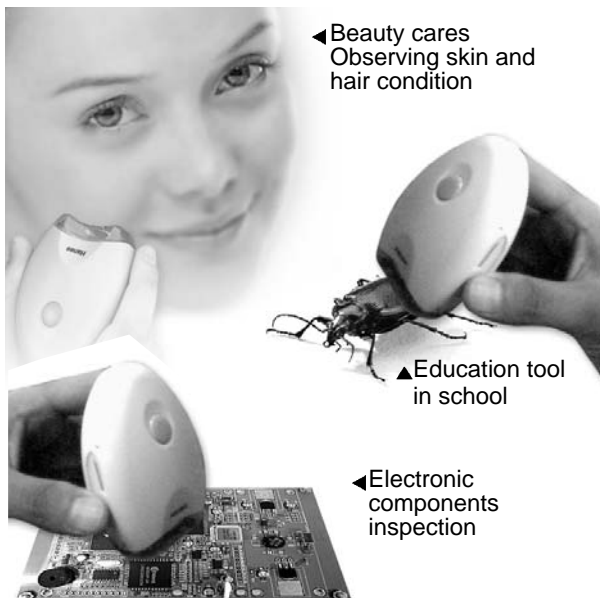
- Please treat lens carefully like your eye to avoid any dust or fingerprint on it and use soft fabric or something similar when you cleaning the lens.
- To keep from damaging your HVS-CM500PC(USB) avoid exposing it to moisture and extreme temperatures.
- Do not use or store your HVS-CM500PC(USB) where strong electrostatic or electrical noise may be generated.
- Do not drop or give excessive shock to the HVS-CM500PC(USB).
- Do not disassemble or touch the inside of the HVS-CM500PC(USB).
This may result in malfunctions of the microscope.
- Do not use organic solvents, such as thinner or benzene, on to the HVS-CM500PC(USB).

3. Main features

This product is a multi-functional zoom camera available to various application that's more convenient to use than others with the following excellent features.

- USB 1.1 Compliant (USB Interface)
- USB 1.1 compliant(USB interface)
- 1/3inch CMOS VGA(640X480)m CIF(320X240)
- Portable with compact size
- X20~X75 Magnification with 17" monitor (It depends on the distance of object)
- LED for colse photography
- Sveral images can be analyzed, recorded and printed with S/W
- Image capture by H/W & S/W
- Beauty care, education tool, inspection for components and etx can be applied

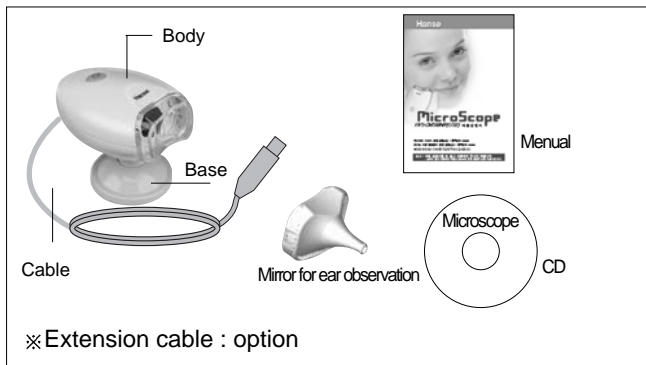
4. Application



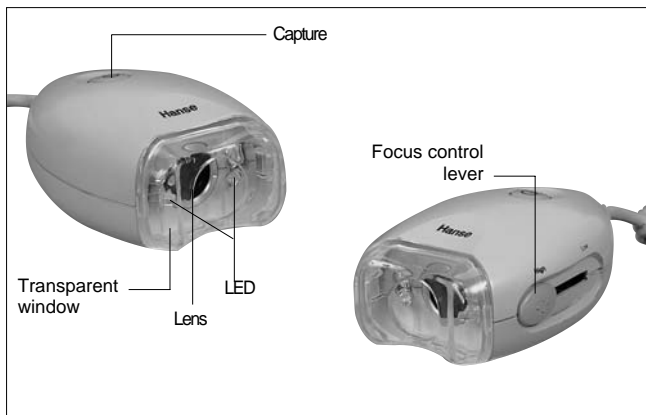
◀ Applicable to CCTV
camera substitute

※ LED function is to be
operated only for close
distance photographing

5. Composition



6. Name of each part



7. How to use the mirror for ear observation



Take off transparent window from the body.
Assemble the mirror instead.

※ Never use this product for observing your or other people's eyes as LED light cause eye's injury.

8. Applicable system network



**Microscope
HVS-CM500PC**



.COMPUTER

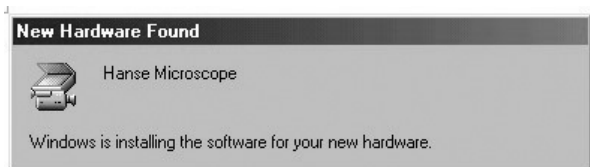
9. Specifications

Description	HVS-CM500PC
Image Sensor	318,000 pixels (VGA 1/3" CMOS)
Device Type	Digital Video Camera
Frame Rate	Up to 30 frames
Interface	USB Specification 1.1
Signal/Noise Ratio	c.56dB
Pixel Resolution	640 ×480(VGA), 320 ×240(CIF)
Exposure Control	Automatic(to+82dB)
Gain Control	Automatic(to+24dB)
USB Cable	1.5m ±0.2
Supply Voltage	4V1~6V0 DC(Internally regulated)Through USB
• 20~75, ∞ magnification	

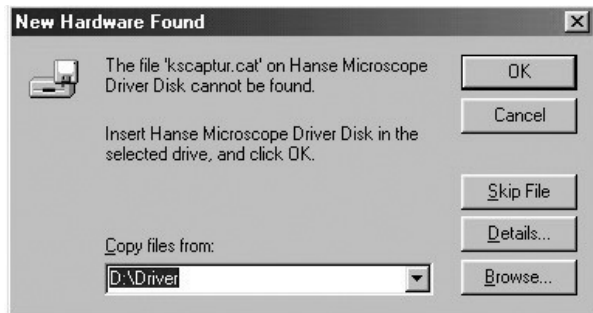
10. Install of Hardware

1. Install with P&P Process

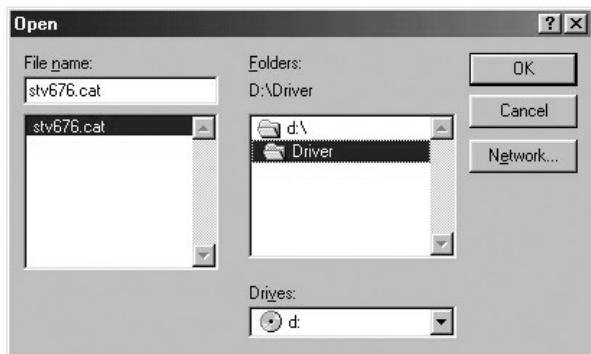
- 1) Connect Microscope to USB port of your computer



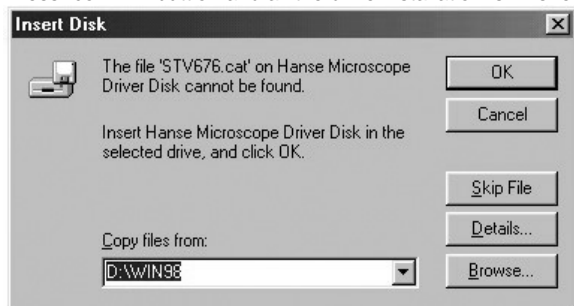
- 2) Checking "Browse"



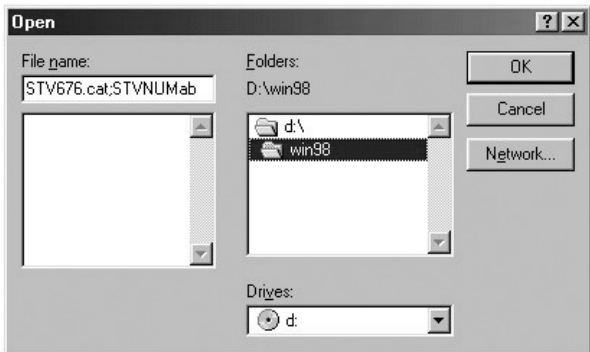
3) After checking drive position , click “OK”Button



4) After Click “Browse” for original copy position, pointing win98 holder of program CD
Press “confirm” button and all the drive installation is finished.



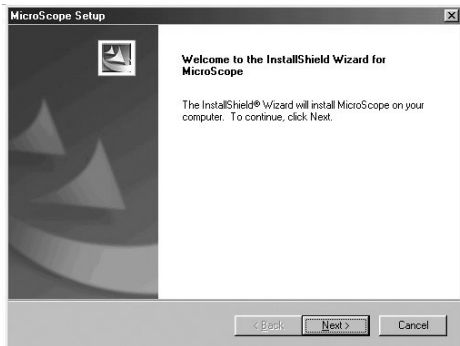
5) If the following picture displayed, click “OK” button



11. Install Program

1. Install Program

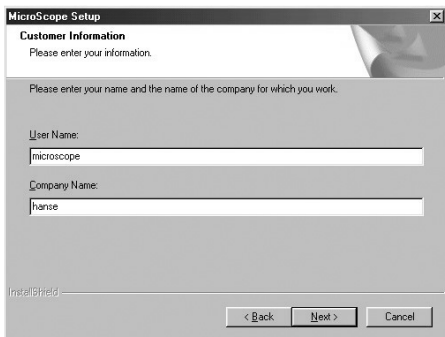
1) Installation.



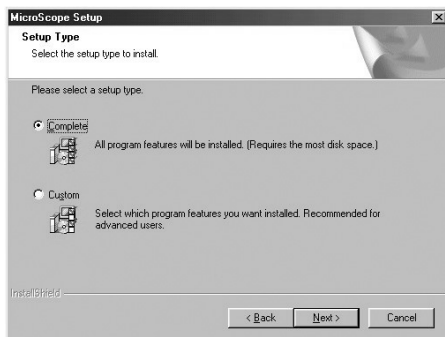
- Press the next button for installShield wizard.



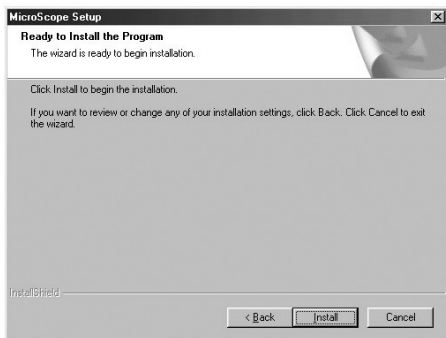
- Choose "Agreement of License" and Press the next button.



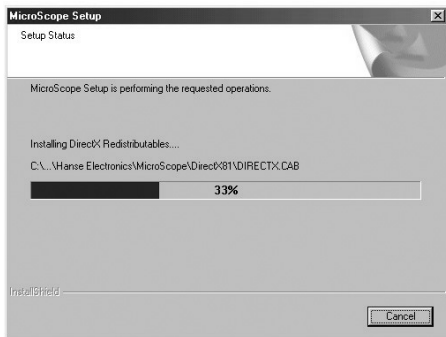
- Fill user's name and company name out in user's information window and Press the next button.



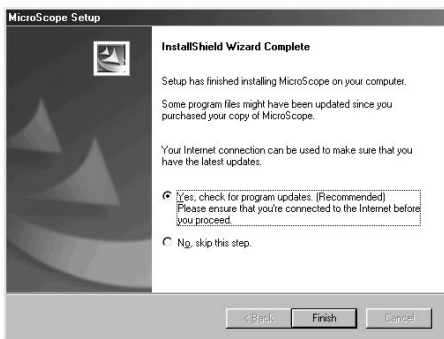
- Choose the installation type users want to and Press the next button.
- It is recommended for users to choose “Full set up” basically.



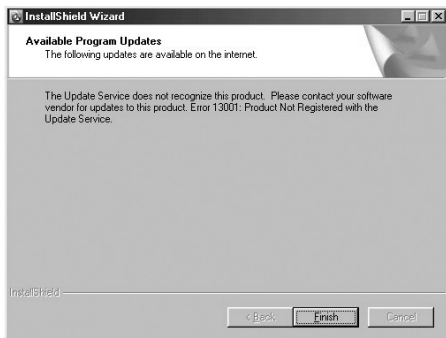
- Press the install button to set up the program.



- Window is appeared for displaying installation.



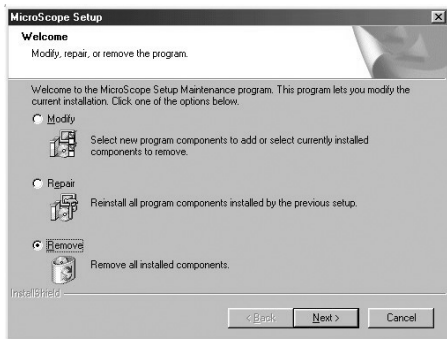
- The program will be updated on our homepage and to renew the updated program ,choose “yes, check the renewed program” and press the “finish” button.



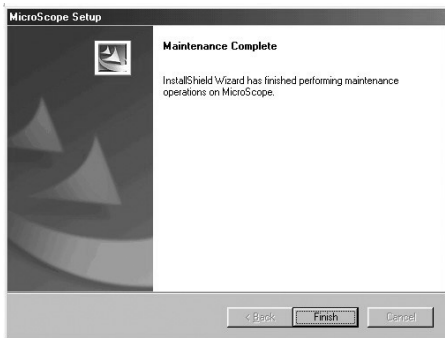
- After finishing renewing program, press the “Finish” button, then installation is completed successfully.

2) Note

- In case microscope program was installed before, execute the existed set up program again.



- Above the window, choose the “Remove” button and press the “Next” button.
- After remove the program completely, execute the new version of setup.exe and install program again.



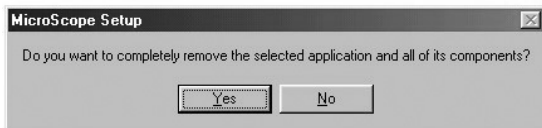
2. Program Manual

1) Starting program

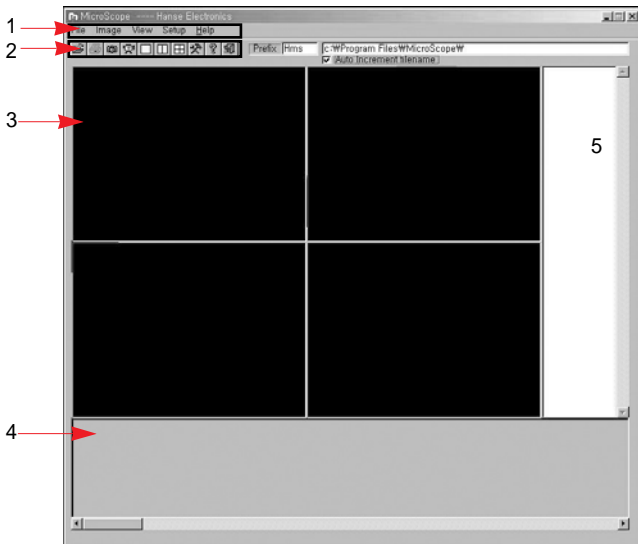
- Connect to USB camera and start program pressing Microscope_Beta icon (Start -> Program -> Hanse -> Microscope_Beta)

• **Note**

- Don't start program without Microscope. If you do without connecting Microscope to PC, you'll see the below message.
- In this case, start the program after connect Microscope to PC,.
- To see only capture screen without live screen, press 'enter' button.



- In case you connect camera to PC, the above warning message won't appear.



- 1: Menu window
- 2: Tool window
- 3: Screen window
- 4: Folder window
- 5: Temp window

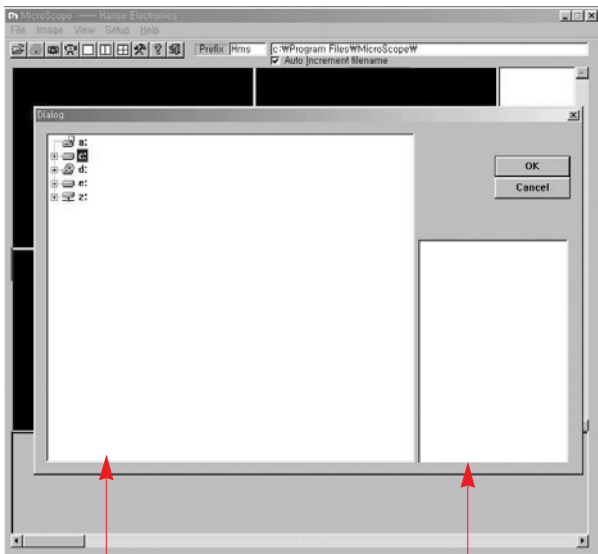
1-1) Menu window

File Image View Setup Help

Pointing Menu

File

- When click 'File', pop up menu shows Open, Print, Print Setup, Exit in a row.
- The window is opened as below :



1. Driver window

2. Picture file window

- Driver window → It shows saving driver and folder.
- Picture file window → It shows chosen driver and picture file in folder.

Print : Open 'Print Setup Mode' and Pre-view.

Print Setup : Open 'Print Setup' mode which is set by default.

Exit : Exit the program

Image

- When click 'Image', pop up menu shows '**Snap Shot**' .
Snap Shot : Capture 'Live Image'

View

- When click 'View' pop up menu shows **'Division 1,2,4'**.
Division1 : Screen 1 (640*480)
Division2: Screen 2 (320*240)
Division4: Screen4 (320*240)

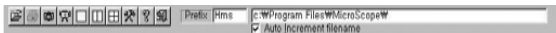
Setup

- When click 'Setup' , pop up menu shows **'Auto Increment File Name'**
Auto Increment File Name : When save files,it determines whether to save one picture or automatically save with the increasing series number.

Help

- When click 'Help' pop up menu shows **'About'** .
About : It is description of product (version, manufacturer, etc...)

1-2) Tool window



- The functions of below Icons are the same to the menu.

 : File Open

 : Print

 :Snap Shot

 :Live/Capture

- In case of 1 screen, you can choose the main screen between live or capture.
- In case of 2 screens, you can choose the left side screen between live or capture.
- In case of 4 screens, you can select one top and left side screen between live or capture.

 :Division

- . You can select screen as one full screen, two screens and four screens.

 : Setup

 : Help

 : Exit

Prefix |Hms

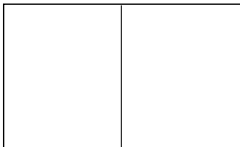
- . You can put the head letter of title for screen that you want to record.

c:\Program Files\MicroScope\
 Auto Increment filename

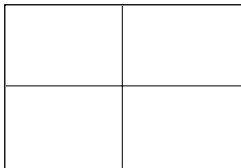
- . You can define the location of file that you want to capture.

1-3) Screen window

- . Screen 1 shows 'Live' and 'Capture'.
- . Screen 2 shows 'Capture' only and screen 4 can be chosen between 'Live' and 'Capture'.



- . Screen2,3,4 shows 'Capture' only and screen1 can be chosen between 'Live' and 'Capture'.



1-4) Folder window

This window shows picture file which would be now loaded.

When picture is captured, this windows shows the captured picture.

1-5) Temp window

When double-click the picture which was saved at folder, the picture is saved at Temp window.

When double-click the screen of Temp Window, the saved pictures are shown at screen window

In a row.

12. WARRANTY

How to get A/S

PRODUCT	Microscope		
MODEL			
DATE OF PURCHASE	YEAR	MONTH	DATE
TERMS OF WARRANT			
SALES AGENT			
ADDRESS OF SALES AGENT			

We will guarantee as follows :

1. This product is made through rigid quality control and test process
2. In case that this product is out of order due to the defect in manufacturing even through the product has been normally used, A/S will be afforded at free of charge for one year after purchasing date.
3. In case of the followings, Hanse will afford A/S with charge of cost even through warrant period.
 - 1) Out of order by user's mishandling or move
 - 2) In case of wrong repair or damage by modification of inner part
 - 3) Out of order by natural disaster or disorder in power source
 - 4) In case of omission, correction without confirmation, loss of warranty card.
4. Please be careful of keeping this warranty card as it won't be reissued.
5. Please surely present the warranty card in A/S request.

INFORMATION TO THE USER

This equipment has been tested and found to comply with the limits for a Class B digital device, pursuant to part 15 of the FCC Rules. These limits are designed to provide reasonable protection against harmful interference in a residential installation. This equipment generates, uses and can radiate radio frequency energy and, if not installed and used in accordance with the instructions, may cause harmful interference to radio communications. However, there is no guarantee that interference will not occur in a particular installation. If this equipment does cause harmful interference to radio or television reception, which can be determined by turning the equipment off and on, the user is encouraged to try to correct the interference by one more of the following measures:

- Reorient or relocate the receiving antenna.
- Increase the separation between the equipment and receiver.
- Connect the equipment into an outlet on a circuit different from that to which the receiver is connected.
- Consult the dealer or an experienced radio/TV technician for help.

CAUTION

Any changes or modifications not expressly approved by the manufacturer could void the user's authority to operate the equipment.

This device complies with Part 15 of the FCC Rules. Operation is subject to the following two conditions: (1) this device may not cause harmful interference, and (2) this device must accept any interference received, including interference that may cause undesired operations.

Hanse
Hanse Electronics Co., Ltd.

■ **Seoul Office :**

2F, 260-7, Youmchang-Dong, Gangseo-Gu, Seoul 157-862, Korea

Tel: +82-2-6675-2500 Fax: +82-2-6675-2501

<http://www.hanseelec.com> E-mail: hanse@hanseelec.co.kr

■ **Factory :**

4L, 33B, Namdong-Industrial Zone, 613-3, Namchon-Dong, Namdong-Gu, Incheon

405-846, Korea Tel: +82-32-816-8700 Fax: +82-32-818-4473