

# ***Audience Response System***

## ***Instruction Manual***

## **FCC STATEMENT**

1. This device complies with Part 15 of the FCC Rules.  
Operation is subject to the following two conditions:
  - (1) This device may not cause harmful interference, and
  - (2) This device must accept any interference received, including interference that may cause undesired operation.
2. Changes or modifications not expressly approved by the party responsible for compliance could void the user's authority to operate the equipment.

# 1 Introduction

---

**Audience Response System** is an interactive audience response solution which enhances the interaction between presenter and audience. With user friendly software application and presenter's / audience's remote, Corporate Conference and Teaching Environment can be more interesting with audience's participation. Audience Response System uses cutting edge RF technology for data transmission and supports over 1000 concurrent users. Presenter obtains level of participation as well as the result of response in various formats by simply touch on a button on the presenter's remote during conference.

Watch the PowerPoint presentation and feedback with remote controls! Audience Response System enriches your presentation by involving your audience and increasing their attentiveness. The system works as a plug-in with Microsoft PowerPoint, powerful and popular presentation software that supports graphic files for presentation.

**Audience Response System** can be used for *corporate conference, examination, training voting, AGM, medical forum and public consultant*. The applications are widely used in classrooms, lecture halls, training centers and conference rooms. The system enables real-time performance tracking, immediate feedback and review. The wireless design saves time, paper and investment costs in networking or purchasing student PC. With this total solution, Corporate Conference and Teaching Environment can be more interactive and be different from traditional presentation style.

## System Requirements

- OS: Microsoft Windows XP / Vista
- Microsoft Office 2003 / 2007 (with Microsoft Access, PowerPoint and Excel)
- Microsoft .NET Framework 2.0 Service Pack 1 (included in installer CD)
- CPU: Pentium 1.4G or higher
- RAM: 1G or above
- Display: 16-bit High Color or higher
- USB 1.0/1.1/2.0 port

## Precautions

- Do not drop the remote control. Avoid contact with water.
- If batteries have leaked on the remote control, carefully wipe the case clean and load new batteries.

## **2 Package Contents**

---

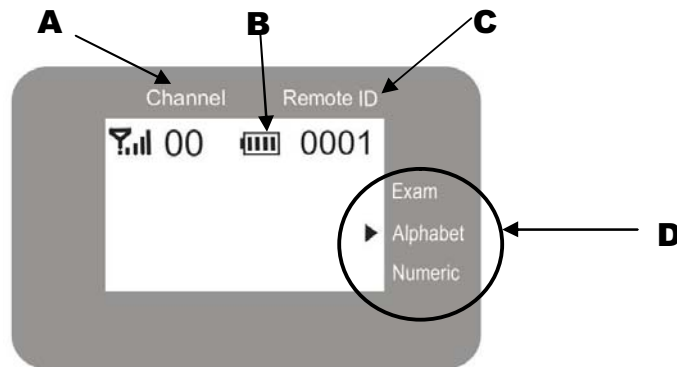
### **Basic Package**

- ◆ Student Keypad (x ordered qty.)
- ◆ Receiver (x1)
- ◆ USB port to mini B Cable (x 1)
- ◆ Instruction Manual (x 1)
- ◆ Software CD



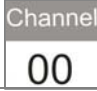






### 3 Audience Response System Components



#### 3.1) Student Keypad



\* use 2pcs. AAA alkaline battery for keypad

BUTTON / PARTS		FUNCTIONS	
LCD display - Connectivity Indicator		Display the connection status for recent sent-out record (not showing the exiting connectivity). To know the exiting connectivity, press any key of the keypad.  Connected  Not connected	
<b>A</b>	LCD display - Channel	Channel number: 00-30	
<b>B</b>	LCD display – Battery	Indicate battery level	Hi:  Low: 
<b>C</b>	LCD display – Remote ID	Remote number	
	LCD display – Exam	Self Exam	
<b>D</b>	LCD display – Alphabet / ▲	Switch to alphabetical answer option	
	LCD display – Numeric / ▼	Switch to numerical answer option	
	Join	Registration: Step 1: if the "CHANNEL No:" displayed is correct, press "OK" to confirm Step 2: "USER ID" will be shown, press "OK" to confirm  Finished, the keypad has been registered and can be used for exam or answering question for Power Point Slide.	
	Exam	Switch to exam mode  Step 1: Press twice to switch to exam mode Step 2: select "YES" to enter exam mode, select "NO" to exit Step 3: enter the paper number Step 4: input the number of question then press "OK" Step 5: start to answer, press "OK" to confirm your inputted answer  Audience can re-input the answer by pressing ◀ to return to	

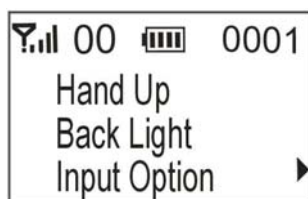
	previous question and ▶ to go to next question. press and hold for 5 sec. to exit exam mode at anytime
Setup	Keypad Setup, refer to section 3.2.1
OK	Function as "Enter"
Up Arrow / Alphabet	Previous / Alphabet Input
Down Arrow / Numeric	Next / Numeric Input
Left Arrow	Exam Mode: Next Question / "-"
Right Arrow	Exam Mode: Previous Question / "+"
Answers option 0-9 / A-I	Select answers from the options
<input checked="" type="checkbox"/>	True (Yes)
<input type="checkbox"/>	False (Yes)
Decimal Point ( . )	Decimal Point
DEL.	Delete character

**\*\* to reset the keypad, pull out the batteries \*\***

### 3.2.1) AUDIENCE KEYPAD SETUP:

To customize the keypad settings for various functions in order to optimize the effective use of the ARS system.

Press "Setup" button, the following screen will be displayed. Press down / up arrow to review menu, press "OK" to confirm, "Setup" button to return to previous / main menu.



a	HAND UP	<ul style="list-style-type: none"> <li>▪ Send requests help to Instructor.</li> <li>▪ hands-up information will be shown on the instructor's computer</li> </ul>
b	BACK LIGHT	<ul style="list-style-type: none"> <li>▪ Control back light On / Off</li> <li>▪ Back light time is required to input if chosen "ON". To save power, suggest to set 5 sec. to 15 sec.</li> </ul>
c	INPUT OPTION	<ul style="list-style-type: none"> <li>▪ Change to alphabetical / numerical / multi or single input</li> <li>▪ Keypad has been preset "Numeric and Multi" input</li> </ul>
d	POWER SAVE	<ul style="list-style-type: none"> <li>▪ Time setting for keypad sleeping mode</li> <li>▪ Suggested setting time 60-180 sec. in order to save power</li> </ul>

		<ul style="list-style-type: none"> <li>▪ Require to enter password</li> </ul>
e	REMOTE ID	<ul style="list-style-type: none"> <li>▪ Enable Remote-ID displayed or hidden</li> <li>▪ Require to enter password</li> <li>▪ Suggest to select "ON" to order to display the Remote-ID on keypad</li> </ul>
f	SET PASSWORD	Set one more new password for keypad. Preset password is 2288 (not recommend to disclose to audiences). This preset password can be used permanent and along with the new password.
g	SOUND OPTION	Enable key tone
h	SYSTEM INFO	Display the system Information including: <ul style="list-style-type: none"> <li>▪ Version (e.g. VER. 3.3.0)</li> <li>▪ MAC (e.g. 081329)</li> <li>▪ Audience I.D. (e.g. 008888)</li> </ul>

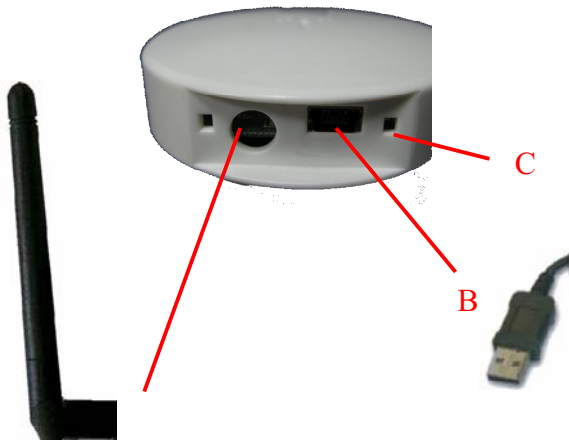


3.3) Receiver

Front



Rear

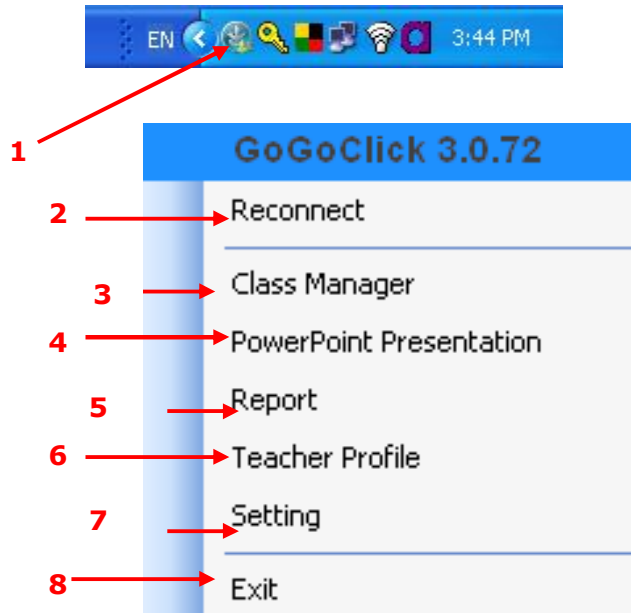


Label	Parts	Functions
A	External antenna & Antenna connector	RF signal receiver. It can be pointed at any heading.
B	USB connecting port & USB connector	Connect to the computer via a USB cable <b>Notes:</b> For the computer to recognize the receiver device, the USB software driver has to be set up. Make sure all connections are secure.
C	POWER LED	LED lights up when power supplying by computer USB port

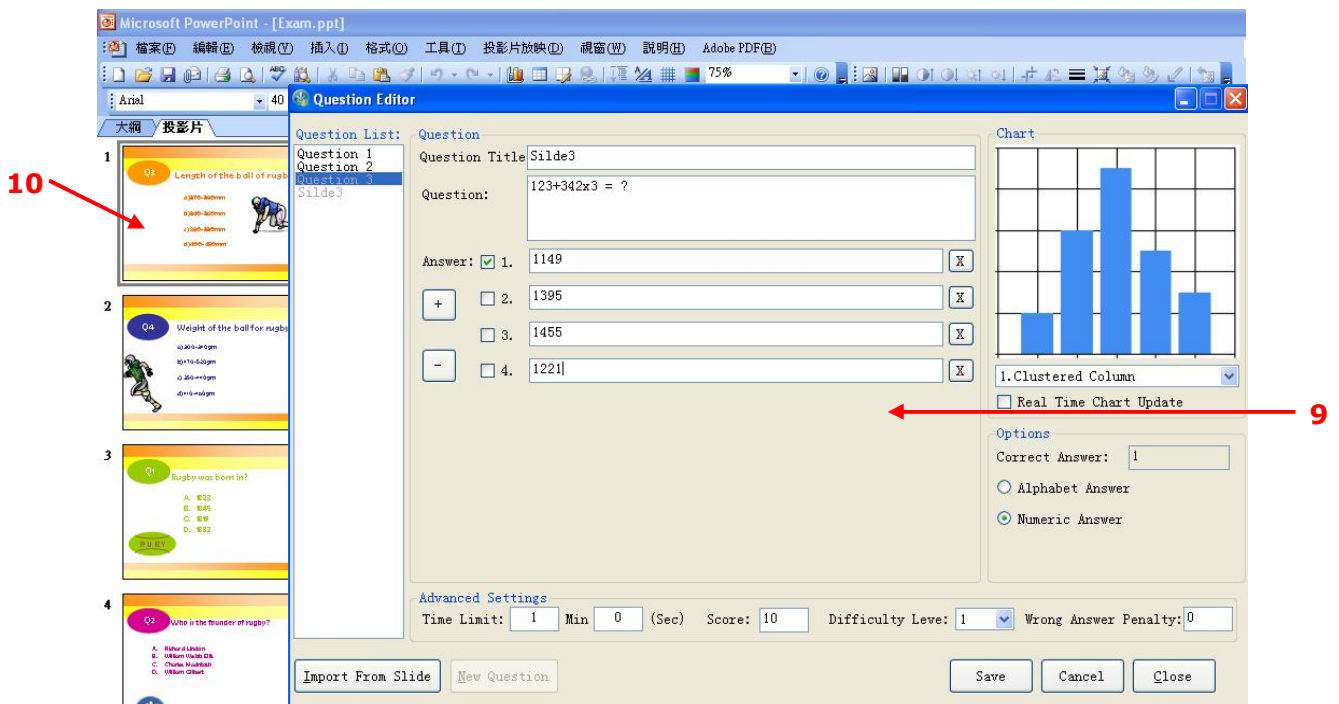
**\*\* make sure to exit ARS software system before disconnect USB cable \*\***

### 3.4)ARS Software

#### 3.4.1) Tray icon & pop-up menu



#### 3.4.2) Power Point – Question Editor





3.4.2) Presentation slide

1 2 3 4 5 6 7 8 9 10 11 12 13 14 15 16 17 18 19 20 21 22 23

**ARS** **1:11**

(1) How many days does it takes for Earth to do a full rotation?



- A. 364
- B. 365
- C. 364.25
- D. 365.25



**ARS** **3/23 1:38**

(1) How many days does it takes for Earth to do a full rotation?

- A. 364
- B. 365
- C. 364.25
- D. 365.25


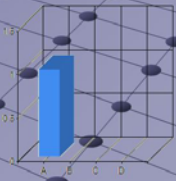


1 2 3 4 5 6 7 8 9 10 11 12 13 14 15 16 17 18 19 20 21 22 23 24  
25 26 27 28 29 30

(Q1) How many days does it takes for Earth to do a full rotation ? **Stop**

- A. 364**
- B. 365
- C. 364.25
- D. 365.25

**A ✓**



Item	Functions	Description
1	Audience Response System tray icon	Shortcut of Audience Response System
2	Reconnect / Change Teacher	<ul style="list-style-type: none"> <li>▪ Reset system after reconnect the Receiver</li> <li>▪ Log in another teacher</li> </ul>
3	Class Manager	<ul style="list-style-type: none"> <li>▪ Defines class, student, join-in mode and Channel Settings</li> <li>▪ Student join in</li> </ul>
4	PowerPoint Presentation	Launches Question Editor, starts the examination using PowerPoint. The answers can be preset using "Question Editor"
5	Report	Generates Attendance Records, PowerPoint Examination Reports by Class or by Student in Excel format.
6	Teacher Profile	Add/delete teacher information
7	Setting	Defines General Information, Connection Setting and Database Management
8	Exit	Exits the system
9	Question Editor Dialogue Box	<ul style="list-style-type: none"> <li>▪ Presets the question summary, time limit, correct answer, question detail, score and difficulty level of the question</li> <li>▪ Import question from PowerPoint Slide</li> </ul>
10	Slide Viewer	Preview presentation slide
11	Remote ID Icons	Displays the status of response or correctness of answers of corresponding student keypad
12	Timer	Examination count down timer
13	Real Time Statistic	Real Time Statistic Display
14	Response Counter	Response Counter Display
15	Correct Answer	Correct Answer Display

## 4 Setting up of Audience Response System System

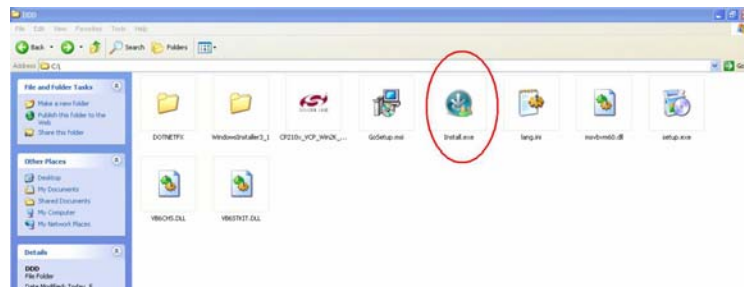
### Step One: Install USB Receiver Driver

Before install the USB Driver (=Receiver Driver), ensure that the Receiver **DOSE NOT** connect into your computer / laptop's USB port.

1) Insert GoGoClick Software CD into your computer, double-click file name



"Install.exe" which located in path: "GoGoClick\Install.exe"



2) The installation menu will be shown



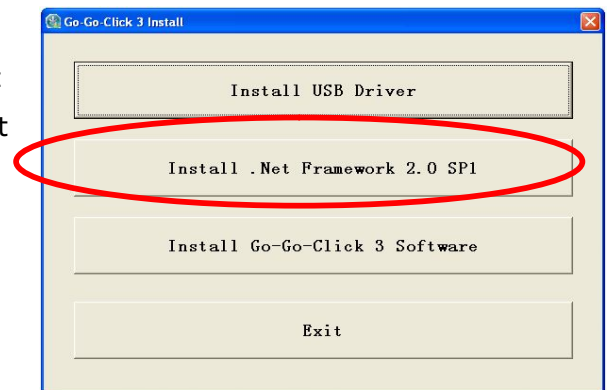
3) Install USB receiver driver by select **"Install USB Driver"** in the Installation Manual.



## Step Two: Install the Audience Response System software

1. Login Windows with an administrator account.
2. Close all running applications.
  - Check whether "Microsoft .Net framework 2.0 Service Pack 1" has been installed under Add or Remove Programs.
  - If "Microsoft .Net framework 2.0 Service Pack 1" is not installed, install Microsoft .Net framework by clicking "Install .Net Framework 2.0 SP1"

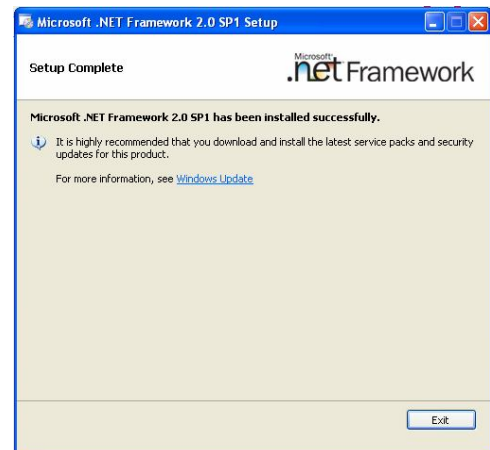
**NOTE:** GoGoClick run by Vista, this is not necessary to install "Microsoft .Net framework 2.0 Service Pack 1"



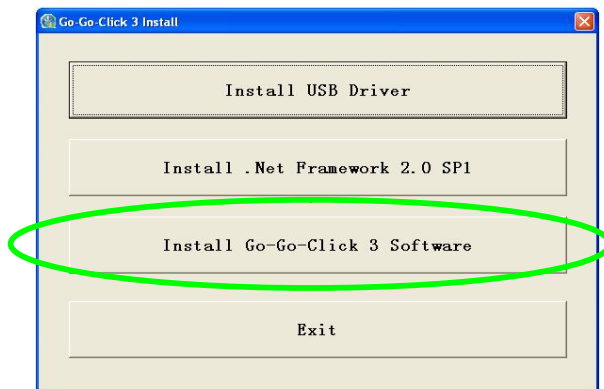
- Select "I here read and ACCEPT the....." then click "Install"



When installation complete, click "Exit"



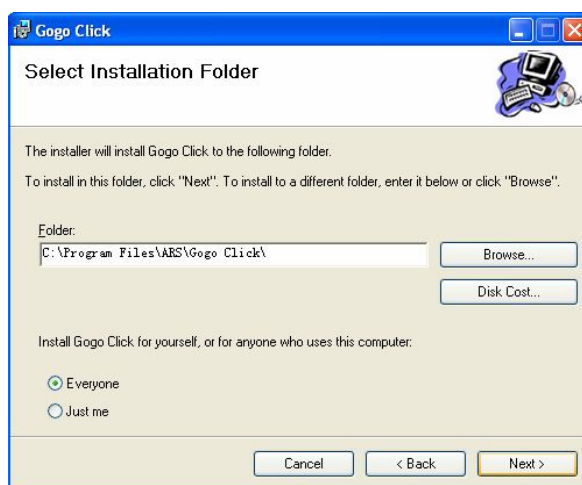
3. Then install Audience Response System software by clicking "Install Audience Response System 3 Software"



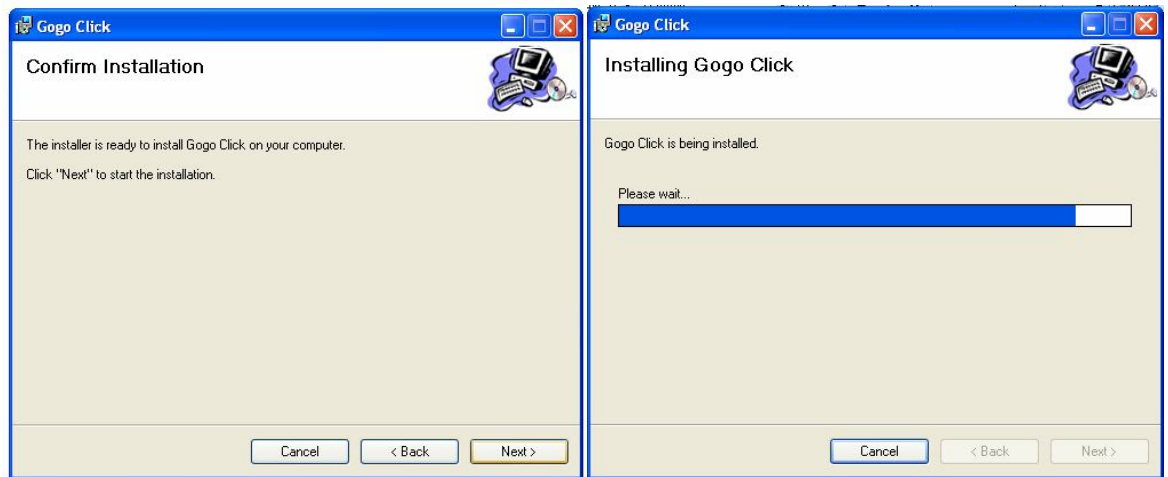
- Setup Wizard will be shown, click "Next" to install



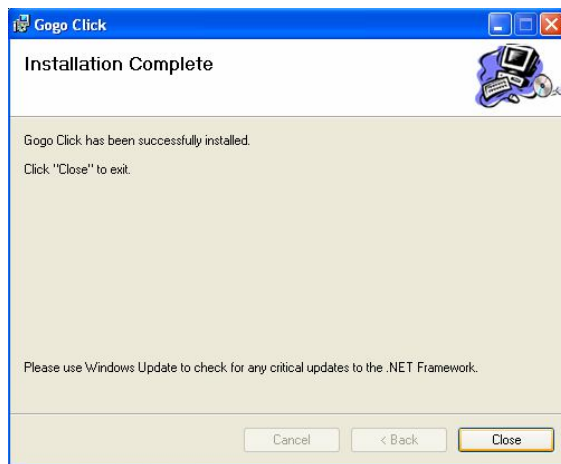
- Click "Next" button to continue installation or select "Browse" to change another folder for installation of GoGoClick program if necessary.





- Click "Next", installing status bar will be displayed.



- After installation complete, installation complete dialogue will be shown. Click "Close" to exit.



4. Audience Response System shortcut icon  will be placed on the desktop.
5. Double click Audience Response System shortcut icon  to run the application.



## **Step Three: Hardware Setup**

### **I) REMOTE KEYPAD:**

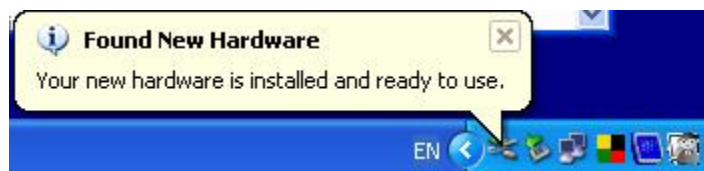
1. Place 2 "AAA" size batteries (**Alkaline recommended**) and insert the screw (optional) into the back of the keypad to secure the battery compartment.
2. Be sure the batteries are inserted properly.
3. Do not mix used and new batteries
4. All remotes will turn to sleep mode when it idles for 1 minute for energy saving.
5. Time of sleep mode setting can be made by pressing "Setup" button on the keypad (please refer to 3.2.1.D "POWER SAVE").

#### **Precaution**

Remove the batteries from the remote if it is not to be used for a long period of time. If the batteries are used improperly their life will be shortened or their contents may leak.

### **II) RECEIVER:**


- Plug the USB cable (provided) into the receiver's USB port and then plug the other end of USB cable into an open USB port.
- USB receiver driver has been detected and ready to use upon the following dialogue shown.

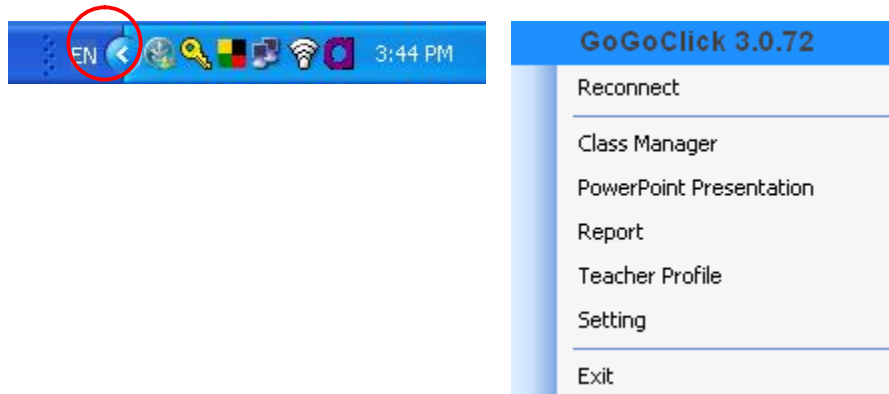


- Adjust the receiving antenna can help for boosting communication range and signal quality.
- To optimize the signal reception, it is recommended to adjust the antenna within an angle of **90 degrees** to the audience.
- Adjust the antenna to **horizontal level** for best reception.
- An undesirable antenna position and angle adjustment might affect signal communication and reduce the range of communication. The student remotes may be unable to connect to the receiver in this situation.

## 5 Operation of Audience Response System System

### Start Audience Response System software program

1. Start Audience Response System system by double-clicking the Audience Response System icon  on the desktop.
2. Audience Response System icon is placed on the Windows taskbar.
3. Click the Audience Response System icon, and a menu will pop up.
4. To get start, click the Trade icon, pop-up menu will be shown.



**Note:**



= Receiver connected properly



= Device connection failed (please refer "Trouble Shooting" pages for problem solving)

### Notes

- The batteries should be removed from the remotes if they are not to be used for long time.
- The communication range will decrease if batteries are low.
- In case of unsatisfactory signal reception and transmission, please check whether the batteries are low.
- Design and specifications are subject to change without prior notice.

**PATENTS PENDING** (For all product design, hardware and software technology used)

- END -