

eBoard



User Manual

Note:

Please read, understand and follow the information contained in this User Guide before installation and use this product.

1. Safety Information

This product was designed, and intended for use indoor via a wireless USB receiver connected to a desktop or laptop computer. Use this product in an outdoor and/or wet environment could damage this product and create a potentially unsafe operating condition

Meaning of Signal Words	
 WARNING	Indicates a potential hazard that could result in serious injury or death and/or property damage.
 CAUTION	Indicates hazards that could result in minor or moderate injury and/or property damage.

1. Safety Information (Continue....)



- Please read, understand and follow all safety information contained in this User Manual before installation and use this product.
- Do not use this product in an outdoor and/or wet environment.
- Do not use this product near water. Electric shock will result.
- This product is not intended for use by unsupervised children. Always provide proper adult supervision when using this product around children.
- At least two qualified service technicians should perform the installation and removal procedure. Failure to do so could result in serious personal injury and/or damage from dropping this product.
- Before installation, take the wall material and wall strength into consideration. For details, please consult your dealer.
- Always place this product on a stable and level surface.
- Use only the designated wall mount and mobile stand hardware.
- Follow all installation instructions carefully.
- Make sure the mounting screws are properly sized to handle the weight of this product.
- Make sure the mounting hardware is securely anchored to a solid structure.
- Only plug the power cord, power plug or power adaptor into an AC power outlet with the proper and indicated power supply voltage and is effectively grounded (earthed) through the normal wiring. If this product is used at a power supply voltage other than the one indicated, it would fail and may result in fire or electric shock.
- If the power cord or power plug or power adaptor cannot be plugged into the AC power outlet, contact a licensed electrician to replace the AC power outlet with a properly grounded (earthed) one.
- When you operate this product, the AC power outlet should be near this product and easily accessible.

- The fact that this product operates satisfactorily does not imply that the AC power outlet is grounded (earthed) and that the installation is completely safe. For your safety, if in any doubt about the effective grounding (earthing) of the AC power point, consult a qualified electrician.

1. Safety Information (Continue....)



- Do not defeat the purpose of the grounding (earthing) plug (for example, do not use a conversion plug).
- Always plug the power cord, power plug or power adaptor securely and firmly into an AC power outlet. Otherwise, overheating will occur, possibly resulting in electric shock or fire.
- Do not pull, bend, rest objects on, or chafe the power cord or power plug or power adaptor. Damage to the power cord or power plug or power adaptor can cause fire or electric shock.
- Do not attempt to repair the power cord, power plug or power adaptor. If the power cord or power plug or power adaptor is damaged or frayed, contact an authorized service representative for a replacement.
- Periodically clean the power cord or power plug or power adaptor to ensure the connection is free of dust. In a damp environment, a contaminated connector can draw a significant amount of current that can generate heat and eventually cause fire if left unattended over an extended period of time.
- Never touch the power cord or power plug or power adaptor with wet hands. Electric shock will result.
- Stop operation immediately if your product emits smoke, excessive heat, abnormal smell or unusual noise. These conditions can cause fire or electronic shock. Immediately turn your product off and unplug the power cord or power plug or power adaptor, and contact an authorized service representative for service.
- When disconnecting this product, hold the power plug or the power adaptor instead of the power cord. Pulling on a power cord forcibly can damage it and cause fire or electric shock.
- To prevent fire or shock hazard, do not expose this product to rain or any type of moisture.
- If metal objects or a liquid get into this product, turn this product off and unplug this product immediately. Contact an authorized service representative for service. Operating the contaminated product can cause fire or electronic shock.
- Never open or remove unit covers that are screwed with screws. A high-voltage component can cause electric shock.
- Do not alter this product or modify any parts. Alteration or modification can cause fire or electronic shock
- Before cleaning this product, unplug the power cord or power plug or power adaptor. Electric shock sometimes results.

1. Safety Information (Continue....)

- Do not open or alter the casing of this product. Electric shock or injury may result.
- Be careful about the location of the power cord, power plug or power adaptor to avoid it trips someone or causing this product to fall, etc. It may cause injury or product failure.
- Do not leave this product or any of its accessories on the floor to avoid someone break it when stepping on it or injured by tripping on it.
- Use only the included power cord or power plug or power adaptor. If other power cord or power plug or power adaptor is used, fire or electric shock might result.
- Keep batteries away from children and pets.
- Keep the marker's cap or battery out of reach of children to prevent swallowing.
- Be sure to use the specified type of battery only. Using incorrect type of battery can burn or leak.
- Ensure that battery is installed with correct polarity. Incorrectly installed batteries can burst or leak, resulting in spillage or injuries.
- Be sure to take out batteries worn away from the electronic stylus, etc. The battery worn away can leak.
- Be sure that a battery should not be charged, shorted, heated, broken or thrown into fire. Using wrong can leak generate heat or burst.
- Do not operate this product in a location with high temperature or high humidity. This product is suitable to work under: Temperature: 10°C to 35°C; Humidity: 10% to 80%; NO condensation.
- Unplug the power cord, power plug or power adaptor from the AC power outlet when:
 - The power cord or power supply plug is damaged.
 - A liquid is spilled onto this product.
 - This product is exposed to rain or water.
 - This product becomes malfunctions and/or need repairing.
 - This product falls or after its cabinet is damaged.
- This product use 2.4GHz frequency to connect with the wireless USB receiver. Please note:
 - Keep this product away from medical devices such as heart pacemakers.
 - Keep this product away from radio stations.
 - Keep this product away from IEEE802.11g/b wireless devices and/or switch off those wireless devices when they are not used.
 - Keep this product away from other electric devices.

1. Safety Information (Continue....)



- This product must be disposed in accordance with the relevant federal, state, and local laws and regulations.
- Do not install this product except by qualified service personnel.
- Avoid fire and heat source above 100°C.
- Use only same type “AA” alkaline batteries in electronic stylus.
- Use only coin-type battery “CR2032” in electronic marker sleeve and electronic eraser.
- Be sure to insulate the battery before dispose it to avoid short circuit, overheat, rupture or ignite which may cause injury or fire. The battery must be disposed in accordance with the relevant laws and regulations.
- Do not attempt to recharge battery.
- Do not break or disassemble battery.
- Avoid eye and skin contact, ingestion and inhalation of battery chemicals in the event of a ruptured or broken battery.
- Replace all batteries at same time.
- Properly orient the plus (+) and minus (-) terminals of battery.
- Remove battery when not used for an extended period of time.
- When this product is not used over an extended period of time, switch it off and unplug the power plug or power adaptor. If it is unused and is left connected to a power source for a long period, degraded insulation may cause electronic shock, current leakage or fire.
- Do not position this product in a location where it is unstable.
- Do not place this product in a hot humid or dusty environment. Prolonged exposure to these adverse conditions may cause fire or electric shock.
- When moving this product, be sure to unplug the power cord, plug or power adaptor from the AC power outlet. If this product is moved with the power cord or plug or power adaptor attached, it can cause damage to the power cord, plug or power adaptor which could result in fire or electric shock.
- After installing or moving this product, lock the casters when it is hanging on a mobile stand.
- If this product is fallen down or damaged, turn this product off and unplug the power cord or power plug or power adaptor. Otherwise, it may cause fire or electric shock.

1. Safety Information (Continue....)

- Do not put drinks, other liquids or heavy items on the tray or screen. Accidental spillage of liquid into this product may cause severe damage. If this occurs, turn this product off, unplug the power cord or power plug or power adaptor and contact an authorized service representative for service.
- Do not lean against this product even this product is mounted on the wall.
- When this product is not used over an extended period of time, take the batteries out of the electronic stylus. Otherwise the batteries may leak. Do not use the leaked batteries.
- Do not install this product where it may be exposed to direct sunlight, near heating equipment, or near air-conditioning vents.
- Do not install this product in strong sunlight or strong lighting.
- Do not install this product in locations where the temperature may change suddenly.
- Do not allow writing to remain on the screen for an extended period of time as it will become harder to erase.
- Do not erase with an overly dirty eraser.
- Use commercially available whiteboard cleaner for hard-to-erase stains.
- Use only designated markers and erasers. Use of accessories other than those authorized (such as oil-based markers) may damage the screen or result in hard-to-erase markings.
- If you connect the wireless USB receiver to a USB hub, it is not guaranteed to work.
- Do not connect two or more this product to a computer.
- Fasten the screws tightly to avoid the stand or this product fall which may cause injury or damage.
- Before installation, take the wall material and wall strength into consideration. For details, please consult your dealer.

2. Scope of Supply

After unpacking, please make sure all of the following parts (subject to your purchase) are present

BASIC SYSTEM

Item	Description	Quantity
1	Board with built-in Sensor	1
2	Wireless USB Receiver	1
3	Power Adaptor (12 V)	1
4	Electronic Stylus (excludes battery)	1
5	Wall Mount	1
6	Software CD-ROM with User Manual	1
7	User Manual	1

CAPTURE KIT (OPTION PURCHASE)

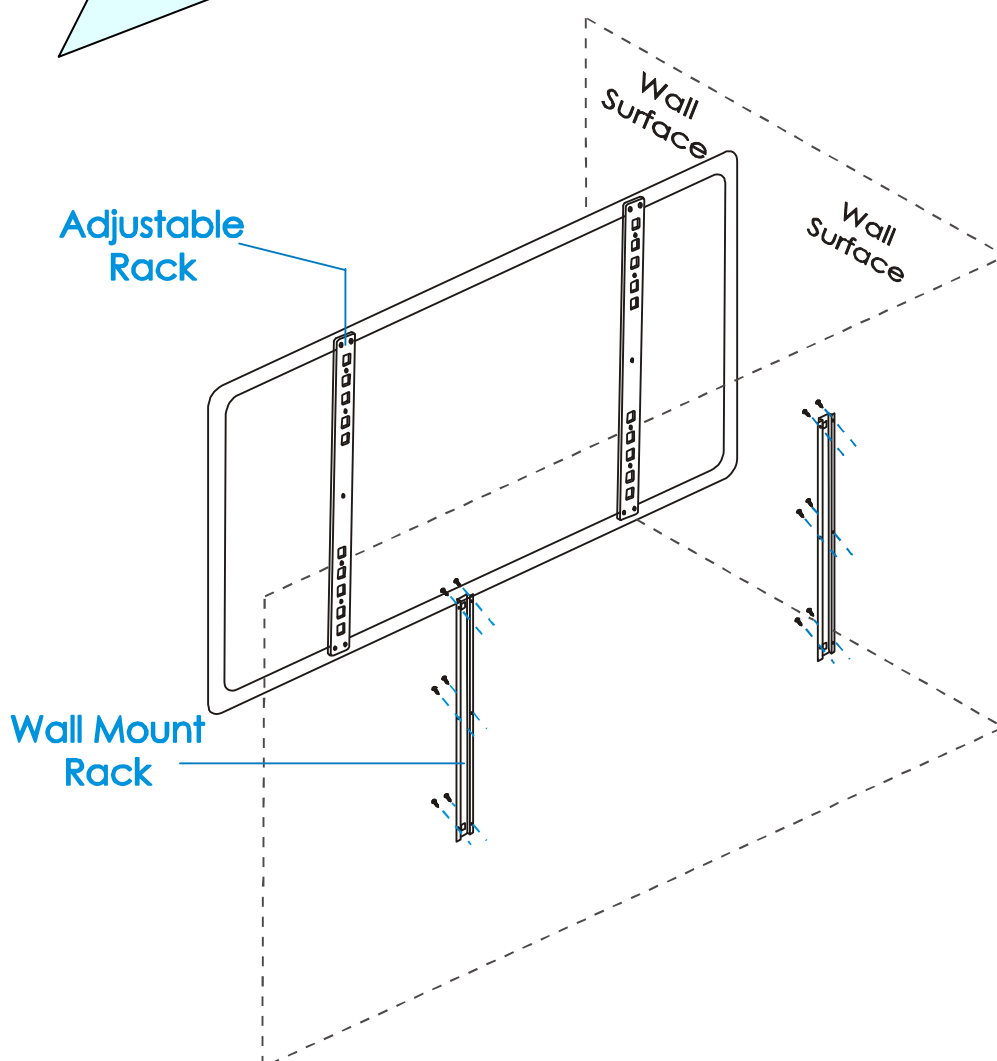
Item	Description	Quantity
1	Black Electronic Marker Sleeve (excludes battery)	1
2	Red Electronic Marker Sleeve (excludes battery)	1
3	Blue Electronic Marker Sleeve (excludes battery)	1
4	Green Electronic Marker Sleeve (excludes battery)	1
5	Electronic Eraser (excludes battery)	1

MOBILE STAND (Optional)

Item	Description	Quantity
1	Mobile Stand	1

3. Wall Mount Installation

- Step 1** Determine the desired location of the wall mount
- Step 2** While holding the wall mount in place, check the proper level and then mark hole locations on the wall
- Step 3** Screw firmly and securely the wall mount into the wall surface using the marked hole locations. Make sure the wall mount is level.
- Step 4** Hang the board onto the wall mount, Ensure the board is securely in place before releasing.



 **WARNING**

- At least two qualified service technicians should perform the installation procedure. Serious personal injury and/or damage can result from dropping this product.
- BEFORE the installation, please make sure both wall material and wall strength are suitable. Otherwise, the board might fall which may cause injury and/or damage. Please consult your dealer for details.
- Use only the designated wall mount.
- Follow all installation instructions carefully.
- Make sure the mounting screws are properly sized to handle the weight of the board.
- Make sure the wall mount is firmly and securely anchored to a solid structure.
- Make sure the board is fastened firmly and securely to the wall mount before using it.

 **CAUTION**

- Do not install this product in location where it may be exposed to direct sunlight, near heating equipment, or near air-conditioning vents.
- Do not install this product in strong sunlight or strong lighting location.
- Do not install this product in location where the temperature may change suddenly.
- Avoid to install two or more this product in the same room or adjacent to each other. Please consult your dealer for details.

 **WARNING**

- At least two qualified service technicians should perform the installation procedure. Serious personal injury and/or damage can result from dropping this product.
- Use only the designated mobile stand.
- Follow all installation instructions carefully.
- Make sure all screws are firmly and securely fastened. Otherwise, the stand might fall which may cause injury and/or damage.
- Make sure the board is fastened firmly and securely to the mobile stand before using it. Otherwise, the board might fall which may cause injury and/or damage.

 **CAUTION**

- Always place this product on a stable and level surface.
- Do not place this product in a hot humid or dusty environment. Prolonged exposure to these adverse conditions may cause fire or electric shock.
- Do not place this product in location where it may be exposed to direct sunlight, near heating equipment, or near air-conditioning vents.
- Do not place this product in strong sunlight or strong lighting location.
- Do not place this product in location where the temperature may change suddenly.
- Avoid to place two or more this product in the same room or adjacent to each other. Please consult your dealer for details.

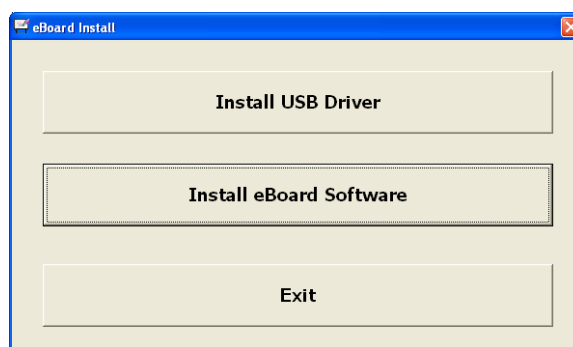
5. eBoard Software Installation

Step 1 Install USB Receiver driver

Step 2 Install Microsoft .NET 3.0

Step 3 Install EBoard Software

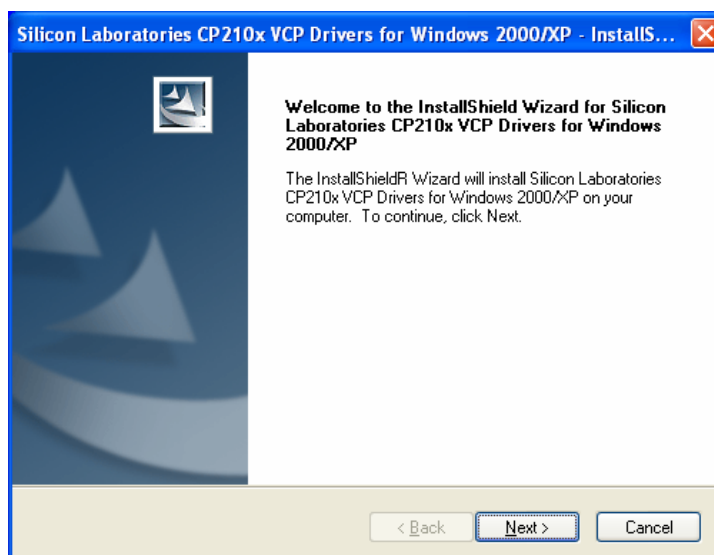
To run the Installation Program, double-click file name “Install.exe” which located in path: “EBoard\Install.exe”



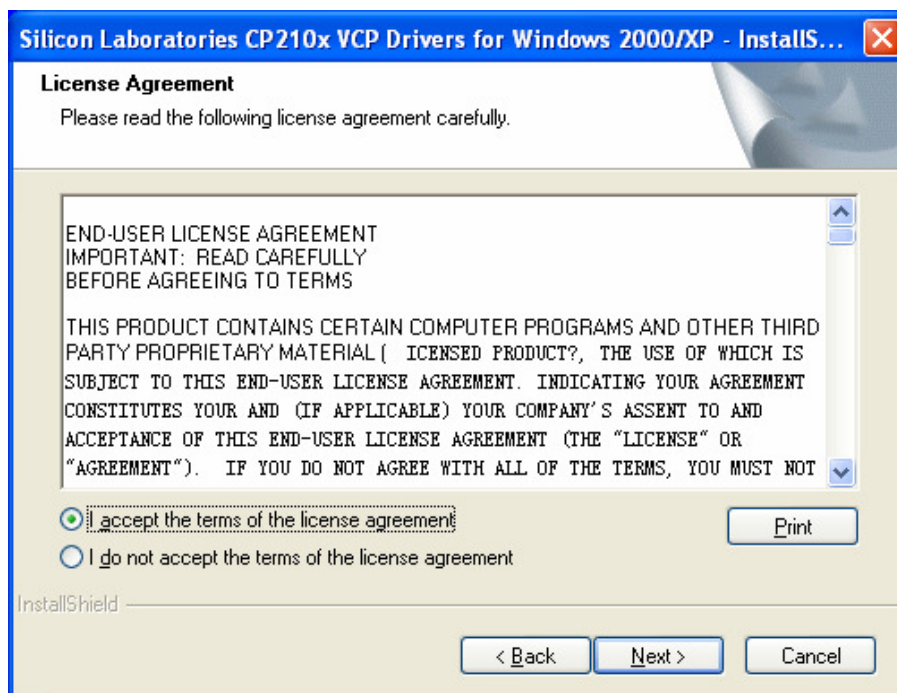
Install USB Receiver driver

1. **DO NOT** connect USB receiver into your computer/laptop’s USB port before USB receiver driver has been installed.

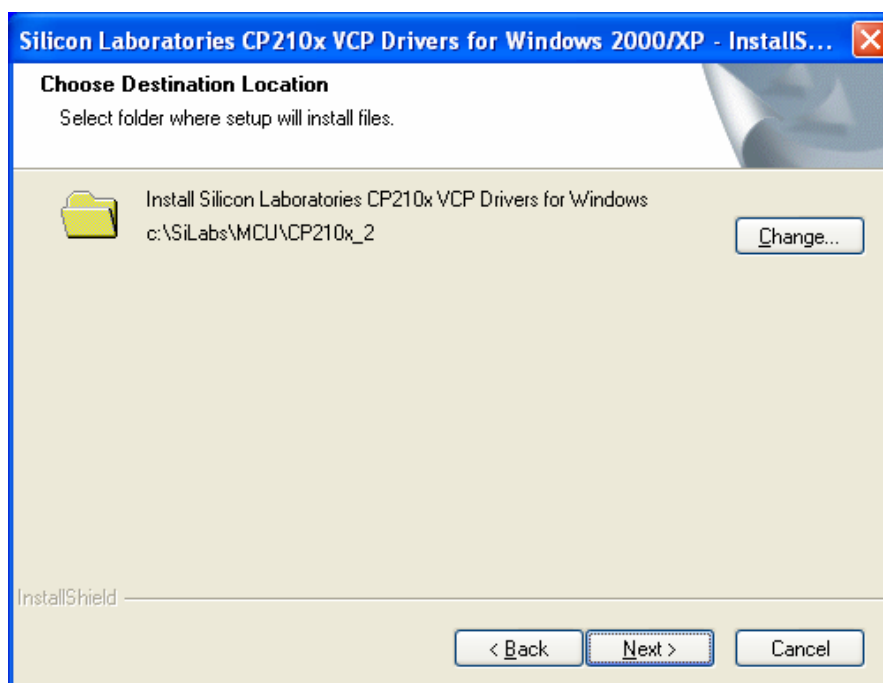
Install USB receiver driver by select “**Install USB Driver**” in the Installation Manual.



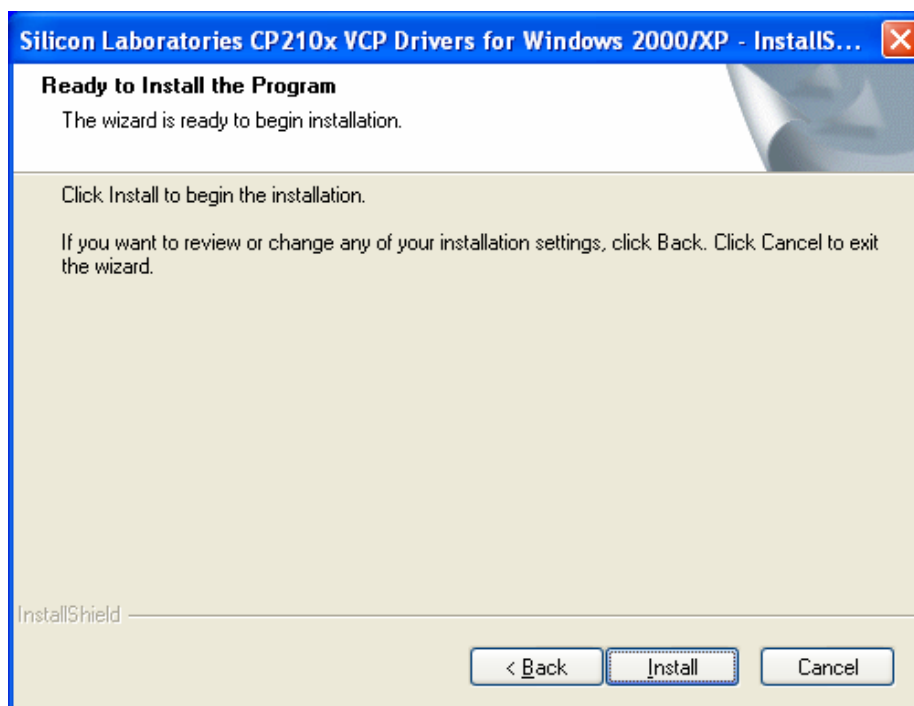
2. Accept the terms of the license agreement and click “Next” to continue.



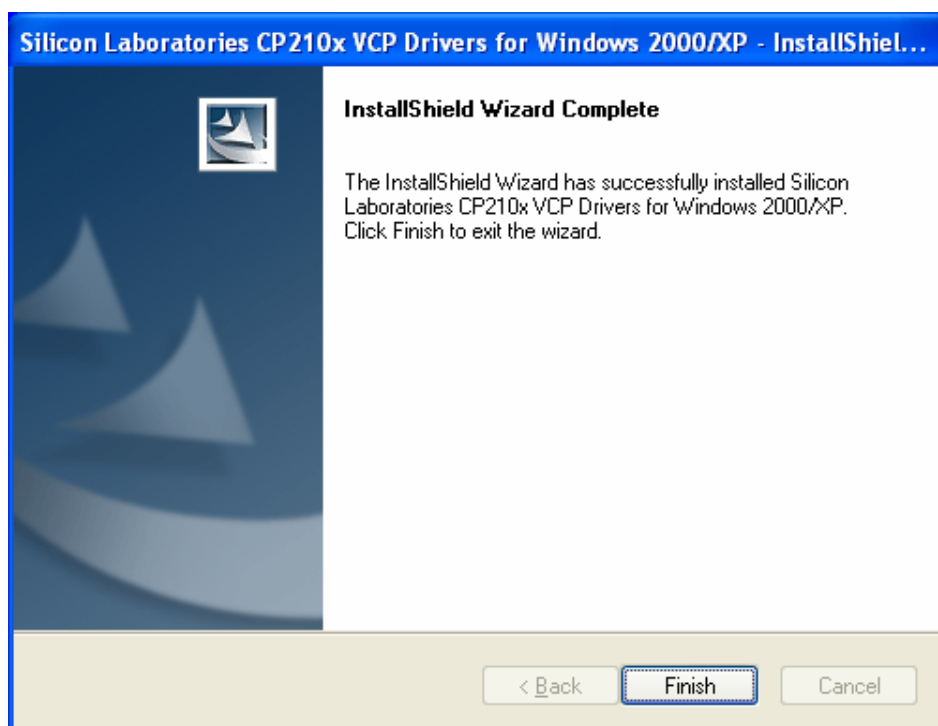
3. Choose destination location and click “Next” to continue.



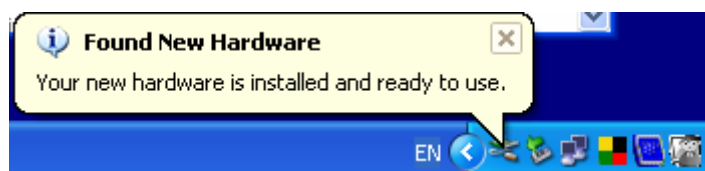
4. To begin the installation, click “Install” to continue.



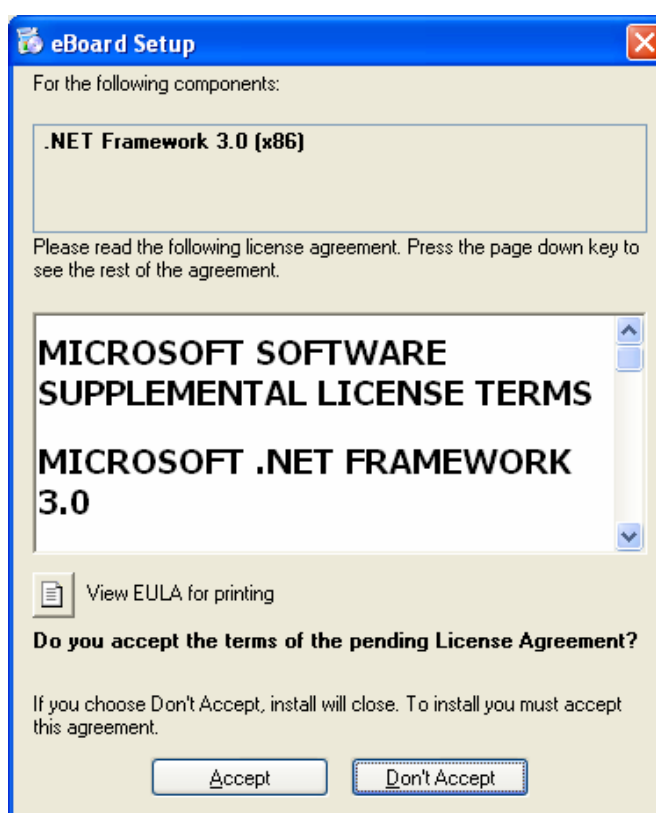
5. Click “Finish” to exit upon USB Receiver driver has been successfully installed.



6. Plug the provided USB cable into the receiver's USB port.
7. Plug the other end of USB cable into your computer/laptop's USB port.
8. USB receiver driver has be detected and ready to use upon the following dialogue shown.

**Step 2**

To install Microsoft .Net 3.0, select **“Install eBoard Software”** in the Installation Manual. The system will check if you have install Microsoft .Net 3.0 in your computer. If it has not been installed, it will be installed automatically install by click the **“Accept”** button as below.

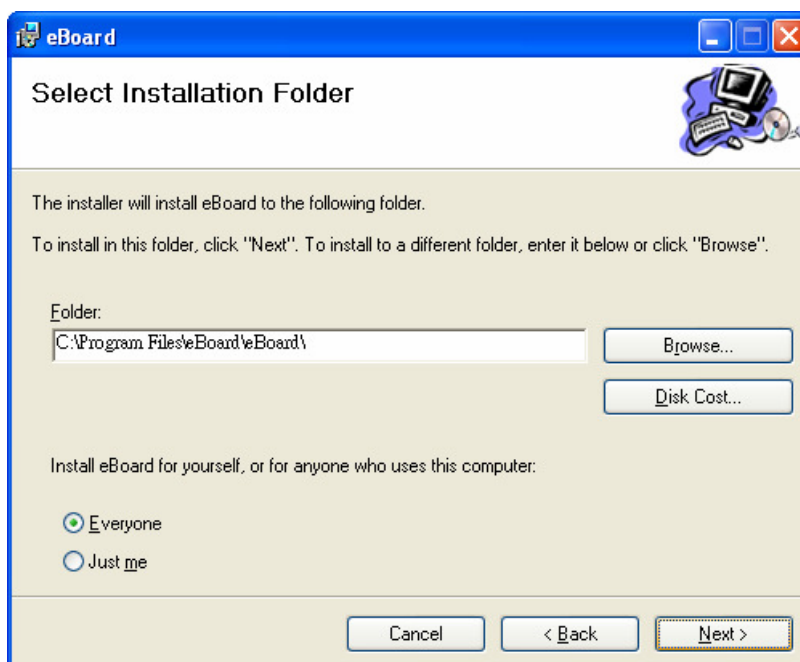


Step 3**Install eBoard software**

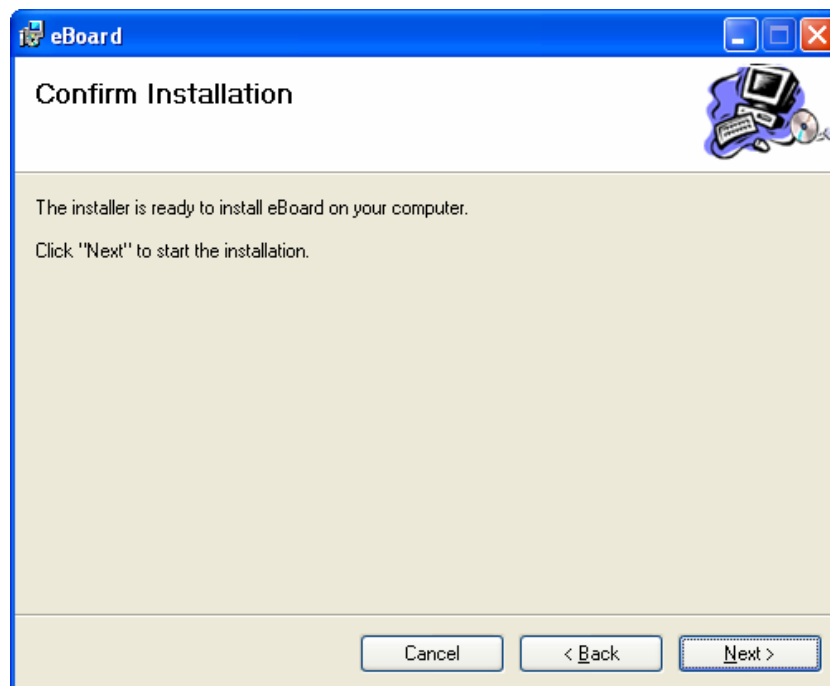
1. Upon Microsoft .Net 3.0 has been installed, the following dialogue will be shown and click “Next” to install eBoard software.



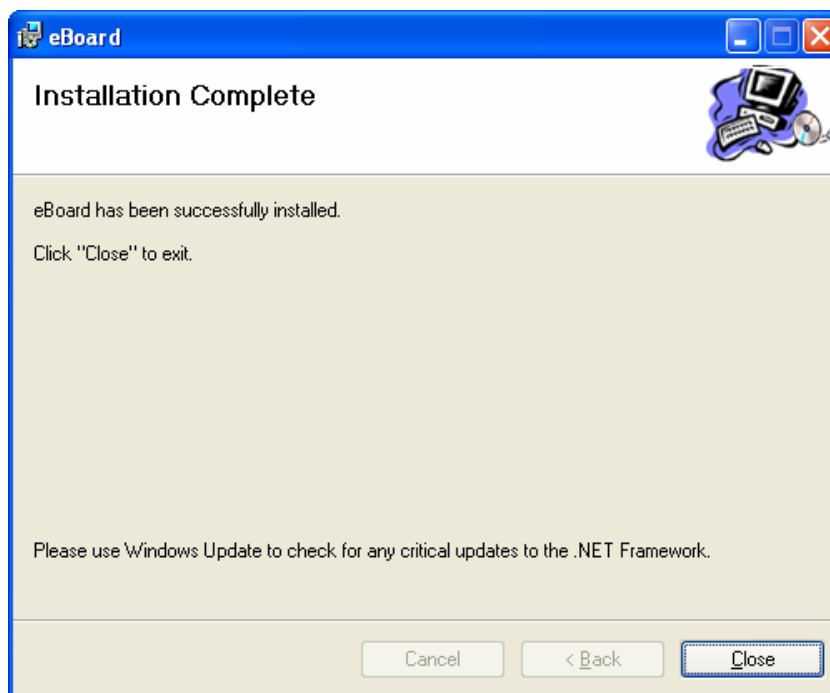
2. To install to the default folder and click “Next” or click “Browse” to install to a different folder



3. Click “Next” to start the installation.



4. Click “Close” to exit upon EBoard software has been successfully installed.



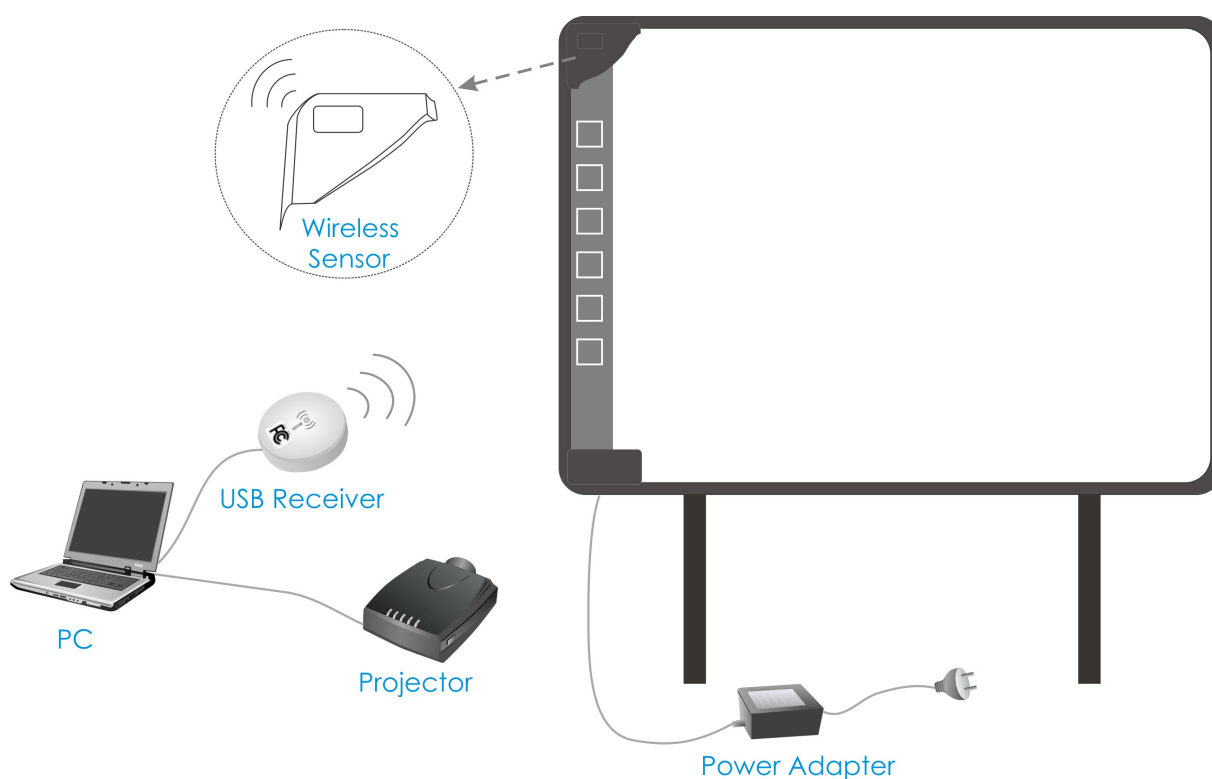
Please process to the hardware connection and configuration setting for eBoard.

6. eBoard Connection

User must have PC, projector, Interactive eBoard, USB receiver and connect them as shown in the figure below.


eBoard Connection Diagram

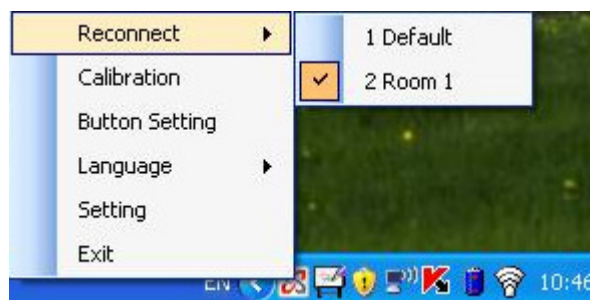
Upon the connection is completed, adjust the position of the video projector until the projected Windows screen on the board is within the electronic stylus input working area.



7. eBoard Configuration

eBoard configuration Main Manual

Right click the  icon to show the Main Manual of eBoard configuration .

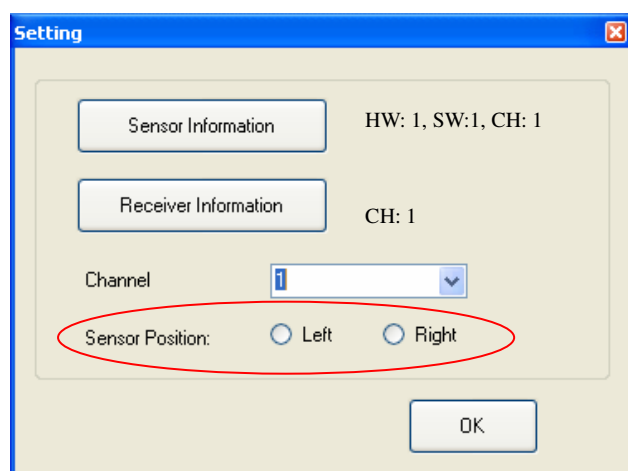


7.1 Reconnect

Make sure eBoard receiver device is connected.

User can select location profile and reconnect with eBoard hardware when using in the same location next time.

7.2 Setting



Once EBoard’s main power is connected, the LED light in EBoard sensor will be flashing for 30 seconds and system configuration should be finished *within this 30 seconds*.

The following configurations should be finished within 30 seconds:

1. Click “Sensor Information” and “Receiver Information”, the following information will be displayed

HW:1 = Hardware version 1

SW: 1 = Software version 1

CH: 1 = Channel 1

2. Select Channel No (0-25). and click “OK” to set channel for both EBoard sensor and PC receiver channel.

Note: *To avoid confliction for data transmission, difference channel should be set within 7 meters for each EBoard sensor and receiver.*

Mobile Sensor Position

Mobile Sensor can be set on left hand side or right hand side of whiteboard.

Please note that the default setting is on left hand side, user can select “right” if the sensor position will be set on right hand side of whiteboard.

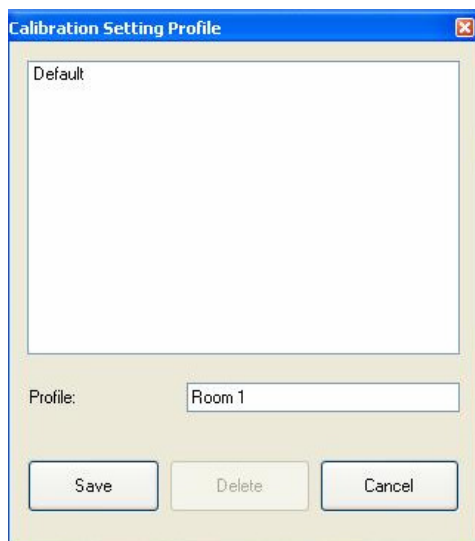
IMPORTANT: Please make sure to change the sensor position before calibration.

7.3 Calibration

Calibration for eBoard after first time installation or projector size and projector’s position has changed.

Step 1

Click the flashing cross to calibrate, press ESC to exit. Point on each coordinates accurately. The coordinates will be moved continually until the calibration is completed.



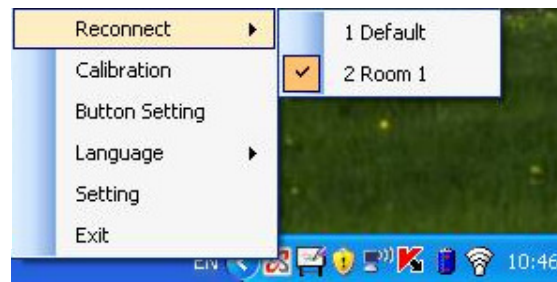
Step 2

Calibration data can be saved for each location with same resolution and projector setting.

Users do not have to calibrate again for the same location provided that the projector’s position and setting remain the same.

Step 3

User can select location profile when using EBoard in the same location next time.



7.5 Language

EBoard supports multi-language (e.g. English, Chinese, Spanish, Japanese, Korean & French)

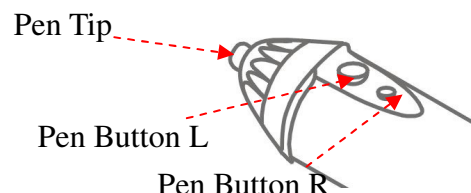
Select the preference language and re-start the eBoard configuration software to activate the settings.

8. Electronic Stylus Usage

Description

1

Pen Tip = Left Click of mouse
 Pen Button L = Right Click of mouse
 Pen Button R = Surfing



2



Open the battery cover and insert one piece of “AA” alkaline battery. Make sure the positive (+) and negative (-) terminals of battery are properly oriented.

3

Do not cover the transmitter with your hand when using.



4

Press down firmly with the tip of the electronic stylus on the screen until you hear a slight buzzing sound and then move it slowly. However, do not press down the tip too much strongly.

5

Do not use two pieces of electronic stylus at the same time.

6

Please keep the electronic stylus perpendicular to the screen for precise positioning

9. Capture Kit Usage - Electronic Marker Sleeve

Description

- 1 Open the battery cover and insert coin-type battery “CR2032”. Be sure to properly orient the plus (+) and minus (-) terminals of battery.
- 2 Open the marker cover and insert a commercial available whiteboard marker, such as SANFORD® EXPO®, etc). Be sure to match the marker color with the sleeve designated color.
- 3 Do not cover the transmitter with your hand when using.
- 4 Press down firmly with the tip of the electronic marker sleeve on the screen until you hear a slight buzzing sound and then move it slowly. However, do not press down the tip too much strongly.
- 5 Please keep the electronic marker sleeve perpendicular to the screen for precise positioning.

10. Capture Kit Usage - Electronic Eraser

Description

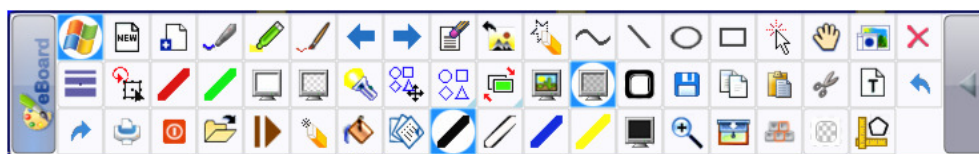
- 1 Open the battery cover and insert coin-type battery “CR2032”. Be sure to properly orient the plus (+) and minus (-) terminals of battery.
- 2 Press down firmly with the eraser cover on the screen until you hear a slight buzzing sound and then move it slowly. However, do not press down the eraser cover too much strongly.
- 3 Please keep the electronic eraser perpendicular to the screen for precise positioning.
- 4 Please change the eraser cloth when necessary.

11. eBoard Software Operation

eBoard Software System turns your white eBoard into a virtual touchscreen, It is best used as a presentation tool, which allows you to open, close and show anything you need directly from the whiteboard, instead of having to walk between your computer and white eBoard whenever you need to change something.

eBoard Software System and the projector connect to your computer. The projector displays your computer desktop onto the whiteboard and the eBoard Software detects when you touch the board, allowing an electronic pen (using the plastic stylus insert) to act as a virtual mouse which controls your computer desktop.

eBoard Software – Annotation Toolbar



13. Notices

Every effort has been made to ensure all information contained in this user guide is correct, but the accuracy or completeness is not guaranteed. Before using this product, you must evaluate it and determine if it is suitable for your intended application. You assume all risks and liability associated with such use. Any statements related to this product which is not contained in this manual or any contrary statements contained on your purchase order shall have no force of effect unless expressly agreed upon, in writing, by this company.

Without this company permission, reproduction or reprinting this user guide or any part is prohibited.

The contents of this user guide are subject to change without prior notice.

14. Warranty

This product hardware, which is limited to the built-in Sensor, Wireless USB Receiver, Power Adaptor and Electronic Stylus is warranted to be free from defects in material or manufacture for one (1) year from the date of purchase. THIS COMPANY MAKES NO OTHER WARRANTIES OR CONDITIONS INCLUDING, BUT NOT LIMITED TO, ANY IMPLIED WARRANTY OF CONDITION OF MERCHANTABILITY OR FITNESS FOR A PARTICULAR PURPOSE. If this product is defective within the warranty period stated above, your exclusive remedy shall be, at this company's option, to replace or repair this product or refund the purchase price of this product. This company will not be liable for any direct, indirect, special, incidental or consequential loss of damage arising from this product.

You will bear the costs of all required services, repairs and damages resulting from defects in this product and will bear the costs of direct or indirect damage (including the loss of profits or required information) that resulted from this product defects.

Even during the warranty period stated above, you will need to pay a repair charges in the following cases:

- When you are not the original purchaser (for example, you purchase it from another customer).
- When the malfunction or damage results from improper handling (such as fall, impact, etc during transportation, movement or using).
- When the malfunction or damage results from handling contrary to the methods, warnings and cautions mentioned in this user guide.
- When the malfunction or damage result from abnormal voltage, pollution or other natural disasters.
- When the malfunction or damage results from a connection by other equipment not authorized by this company.
- When the malfunction or damage results from consumables ordinary wear and tear during normal use.

You are responsible for shipping charges required to send all or part of this product for repairing.

You are responsible for the labor fees for repair-associated equipment assembly or disassembly.

The aforementioned warranty provisions supersede all express or implied warranties that include legal defect liability.

FCC STATEMENT

1. This device complies with Part 15 of the FCC Rules.
Operation is subject to the following two conditions:
 - (1) This device may not cause harmful interference, and
 - (2) This device must accept any interference received, including interference that may cause undesired operation.
2. Changes or modifications not expressly approved by the party responsible for compliance could void the user's authority to operate the equipment.