

# Table of Contents

Parts .....	3
Connection to Computer .....	4
How to Adjust Monitor Angle .....	5
Installing Monitor Driver .....	6
Name and Function of Front .....	8
Power Management Feature .....	10
Adjusting OSD .....	11
Standard Signal Table .....	17
Specification .....	18
Troubleshooting .....	19
Warning .....	21

**INFORMATION TO USER:**

*This equipment has been tested and found to comply with the limits of a Class B digital device, pursuant to Part 15 of the FCC Rules. These limits are designed to provide reasonable protection against harmful interference in a residential installation. This equipment generates, uses and can radiate radio frequency energy and, if not installed and used in accordance with the instructions, may cause harmful interference to radio communications. However, there is no guarantee that interference will not occur in a particular installation; if this equipment does cause harmful interference to radio or television reception, which can be determined by turning the equipment off and on, the user is encouraged to try to correct the interference by one or more of the following measures:*

- 1. Reorient / Relocate the receiving antenna.*
- 2. Increase the separation between the equipment and receiver.*
- 3. Connect the equipment into an outlet on a circuit different from that to which the receiver is connected.*
- 4. Consult the dealer or an experienced radio/TV technician for help.*

- Shielded interface cable has to be used to ensure product compliance.

**CAUTION:** Changes or modifications not expressly approved by the manufacturer responsible for compliance could void the user's authority to operate the equipment

# Good Posture Guide

- ◆ Place the monitor to face the user and then adjust the monitor angle.
- ◆ Take a break (for about 10 minutes) at every hour during the work with monitor.
- ◆ Refer to the following figure to take the correct posture.

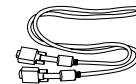


- Look down the monitor below the horizon.
- Adjust the monitor to prevent reflection.
- Relax shoulders and arms, and sit back on the chair.
- Adjust the monitor stand to acquire required angle.
- Maintain the arms horizontally and place hands softly on the keyboard.
- Keep feet flat on the ground.

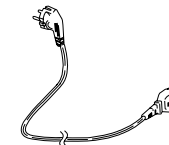
# Parts



LCD Monitor



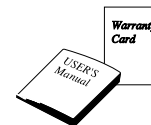
Signal Cable



AC Power Cable



12V-DC Adapter



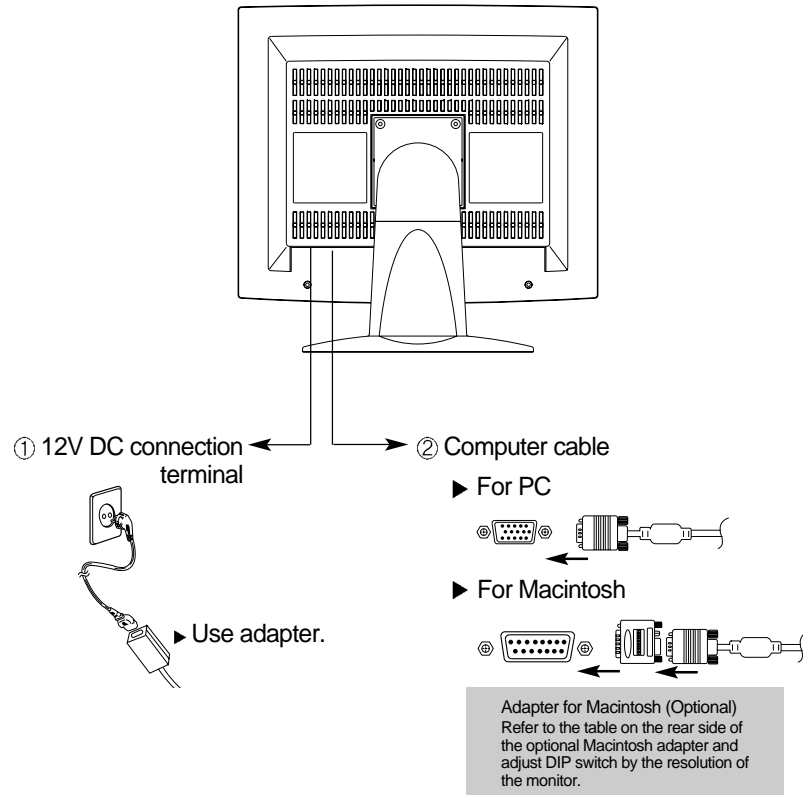
User's Manual /  
Warranty Card



Installation Diskette

# Connection to Computer

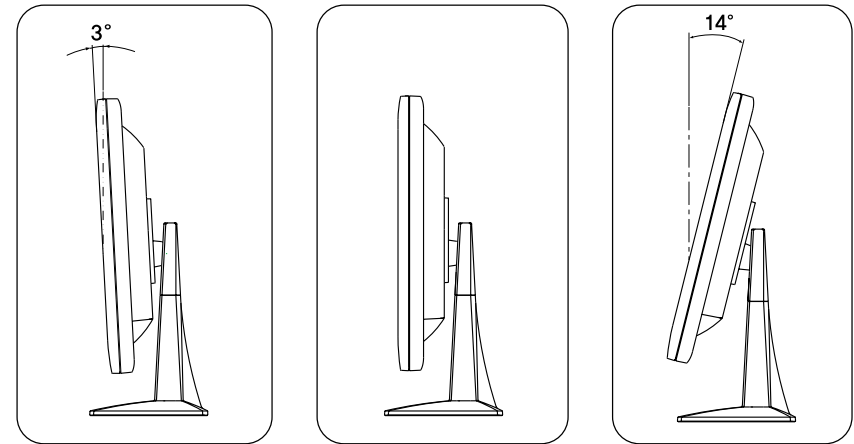
## Basic Connection



1. Use 220 V or 110 V. (Free Voltage)
2. Connect monitor and computer via computer cable (See figure ②)
3. Switch on power to monitor and computer.
4. Installation is finished.

# How to Adjust Monitor Angle

## ▼ How to Default Stand



# Installing Monitor Driver

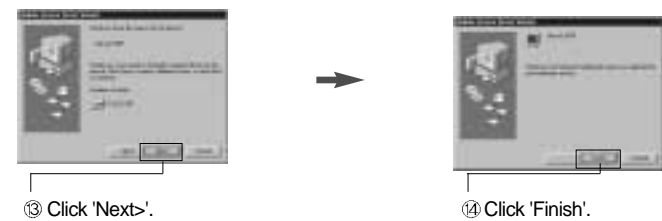
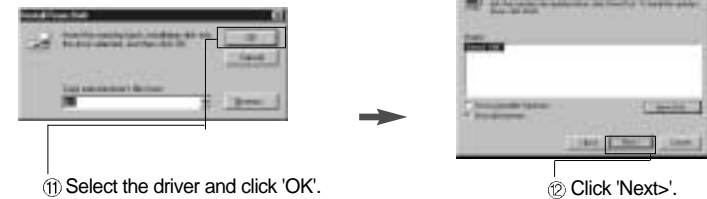
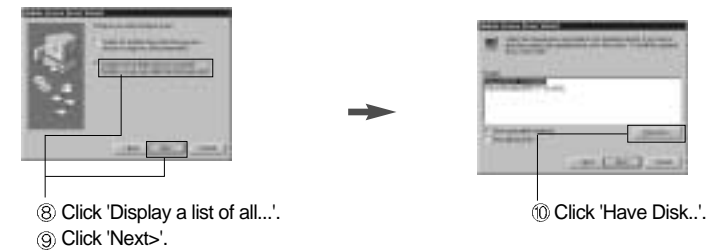
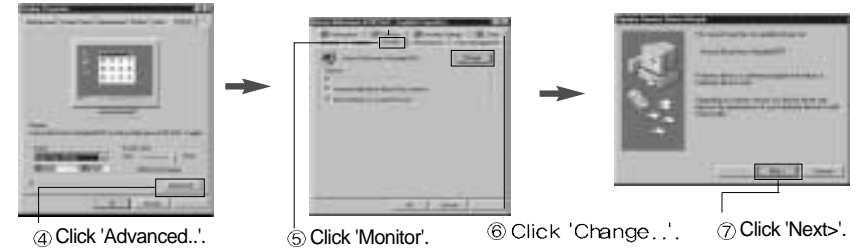
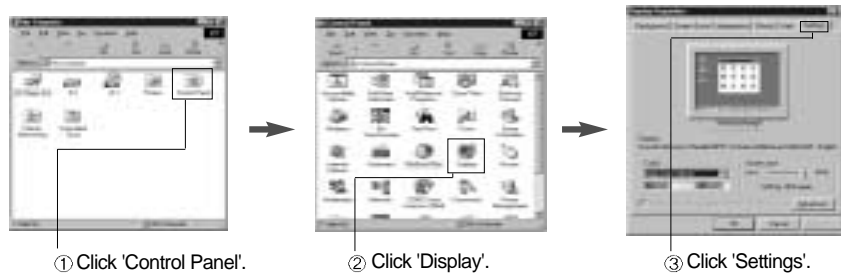
Run (Click) Install at Floppy driver and select the product model to set the optimum display in Window 95, 98 or 2000.  
► Use the Driver Floppy provided.

## Automatic Installation

1. Insert the Diskette in the Floppy driver.
2. Double-click Install.exe in the Floppy driver folder using search function.
3. Select the model and click "OK".
4. Select inf file of the model in Floppy driver, and then click "OK" button.
5. Click "Exit" to close the installation.

## Manual Installation

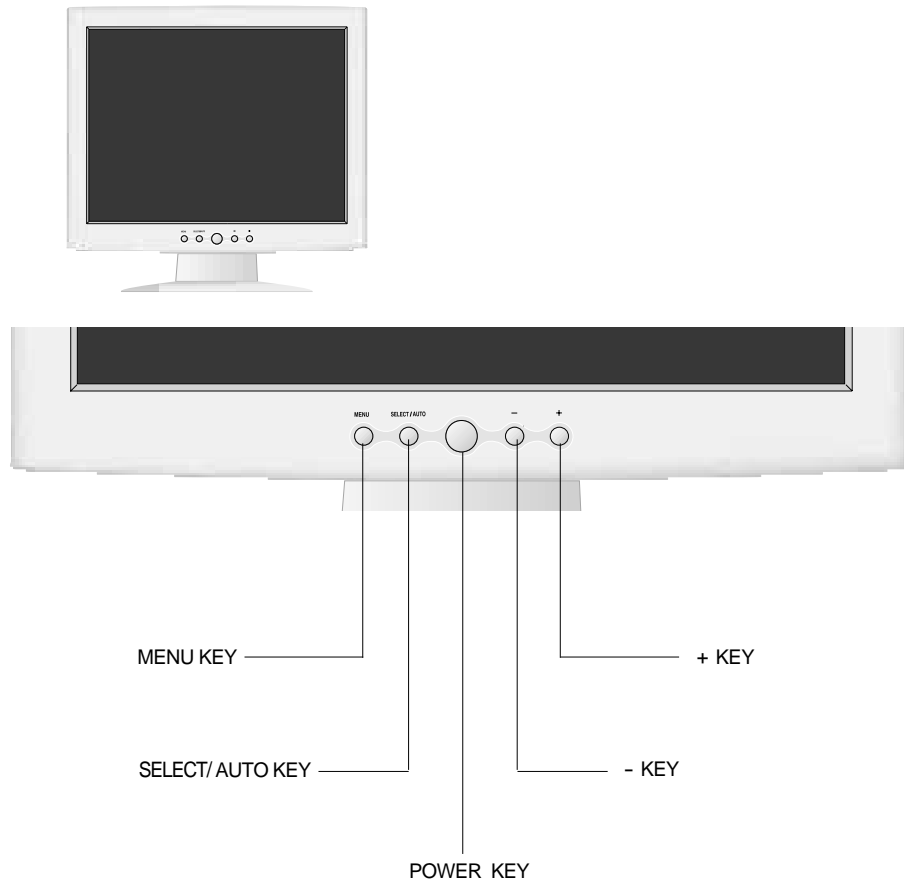
1. Insert the Diskette in the Floppy driver.
2. Click 'My Computer' and follow the procedure below.



3. Select Exit if the monitor model is changed, and then reboot Windows.

# Name and Function of Front

## Front panel



## Functions

- ◆ **Power Switch**  
Power switch is located in the lower center of the monitor stand.  
You can push the switch to turn on/off the power.
- ◆ **Power Saving LED**  
If the green LED around the power switch turns into blinking amber, it indicates the monitor is in power saving mode.
- ◆ **On Screen Display (OSD) Function Button**  
OSD buttons on the front of the monitor perform the following functions.
  - **MENU** : Press this button to display menus.
  - **SELECT/ AUTO** : Press this button, when OSD is not displayed, to perform automatic setting.  
When OSD is displayed, You can select the Item.
  - **POWER** : Power switch.
  - **- +** : By pressing this button when OSD is displayed, You can move cursor into the menus which You want.  
After press the select button, You can change the gauge level and items.

# Power Management Feature

When not in use for a long period of time, the monitor automatically reduces its power consumption, meeting power saving standards of EPA and NUTEK.

The monitor is equipped with a power saving circuit that conforms to the world-standard Display Power Manager Signalling (DPMS) mode of Video Electronics Standard Association (VESA). The power management feature requires that the video card of the computer should support DPMS function.

Status	Color of LED	Power Consumption
Normal	Green	Normal Power
Power Cut Off	Amber/Blinking ( 2 second interval )	5 W or Below

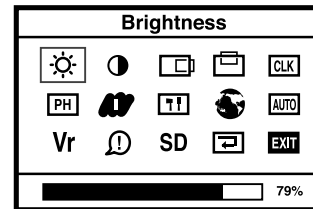
No image is displayed with LED blinking.  
 Monitor is in power saving mode.  
 Use mouse or keyboard to release power saving mode.

No image is displayed without LED on.  
 Power cable plug must be pulled out.  
 Check the power plugs on monitor and on the wall.

"Out of range" displayed on the screen.  
 This message is displayed when the signal from video card exceeds the maximum frequency of the monitor. Readjust resolution and frequency in accordance with the monitor capacity. (Refer to Standard Signal Table)

# Adjusting OSD

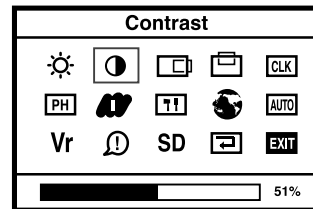
## Brightness



MENU ► - + ► SELECT ► - +

1. Press the Menu button.
2. Use -, + to move Brightness ICON.
3. Use SELECT button to select it.
4. Use -, + to adjust the brightness.

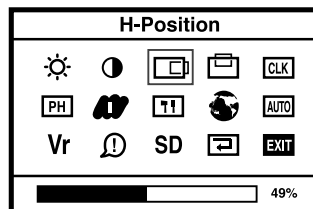
## Contrast



MENU ► - + ► SELECT ► - +

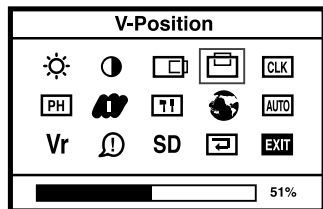
1. Press the Menu button.
2. Use -, + to move Contrast ICON.
3. Use SELECT button to select it.
4. Use -, + to adjust the contrast.

## Horizontal Position



MENU ► - + ► SELECT ► - +

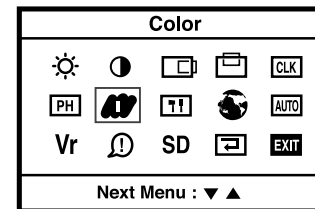
1. Press the Menu button.
2. Use -, + to move H-Position ICON.
3. Use SELECT button to select it.
4. Use -, + to adjust display left or right.



## Vertical Position

MENU ► - + ► SELECT ► - +

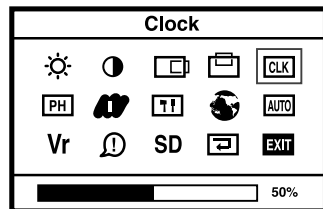
1. Press the Menu button.
2. Use -, + to move V-Position ICON.
3. Use SELECT button to select it.
4. Use -, + to adjust display upward or downward.



## Color

MENU ► - + ► SELECT ► - +

1. Press the Menu button.
2. Use -, + to move Color ICON.
3. Use SELECT button to select it.
4. Use -, + into the submenu.



## Clock

MENU ► - + ► SELECT ► - +

1. Press the Menu button.
2. Use -, + to move Clock ICON.
3. Use SELECT button to select it.
4. If Auto-cnfig function fails to remove Video noise, Use - or + to remove vertical noise. ( Adjusting clock phase is required after the adjustment of clock.)

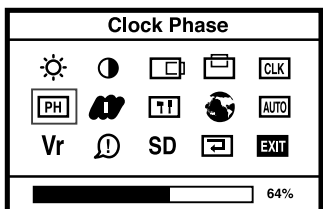


## Preset Color

- + ► MENU

1. Use -, + to select the I or II.
2. Press the Menu button to exit.

I : Blue tone II : Default color



## Clock Phase

MENU ► - + ► SELECT ► - +

1. Press the Menu button.
2. Use -, + to move Clock Phase ICON.
3. Use SELECT button to select it.
4. Use -, + to correct fine trembling or Video noise.



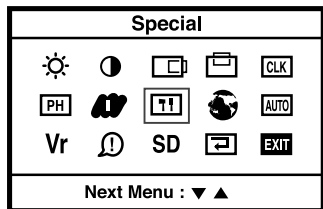
## User Color

- + ► SELECT ► - + ► MENU

1. Use -, + to move Red, Green, Blue ICON.
2. Use SELECT button to select color what you want.
3. Use -, + to increase or decrease each color.
4. Press the Menu button to exit.



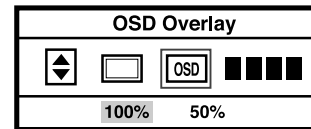
## Special



MENU ► - + ► SELECT ► - +

1. Press the Menu button.
2. Use -, + to move SPECIAL ICON.
3. Use SELECT button to select it.
4. Use -, + into the submenu.

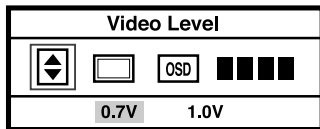
## OSD Overlay



- + ► SELECT ► - + ► MENU

1. Use -, + to move DOS Overlay ICON.
2. Use SELECT button to select it.
3. Use -, + to adjust DOS Overlay.
4. Press Menu button to exit.

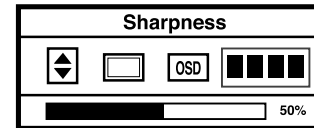
## Video Level



- + ► SELECT ► - + ► MENU

1. Use -, + to move SPECIAL ICON.
2. Use SELECT button to select it.
3. Use -, + to adjust level.
4. Press the Menu button to exit.

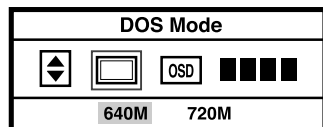
## Zoom Sharpness



- + ► SELECT ► - + ► MENU

1. Use -, + to move Zoom Sharpness ICON.
2. Use SELECT button to select it.
3. Use -, + to adjust Sharpness.
4. Press Menu button to exit.

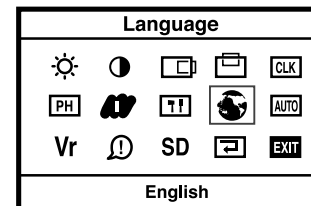
## DOS Mode



- + ► SELECT ► - + ► MENU

1. Use -, + to move DOS Mode ICON.
2. Use SELECT button to select it.
3. Use -, + to select DOS Mode what you want.
4. Press Menu button to exit.

## Language



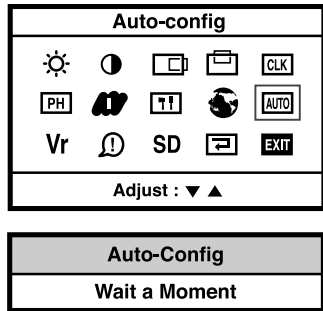
MENU ► - + ► SELECT ► - +

1. Press the Menu button.
2. Use -, + to move Language ICON.
3. Use SELECT button to select it.
4. Use -, + to select language in order.

# Standard Signal Table

Resolution	Horizontal Frequency (KHz)	Vertical Frequency (Hz)	Clock Frequency (MHz)
VGA (720 X 400)	31.469	70.087	28.322
VGA (640 X 480)	31.469	59.940	25.175
VGA (640 X 480)	37.500	75.000	31.500
SVGA (800 X 600)	46.875	75.000	49.500
XGA (1024 X 768)	48.363	60.004	65.000
XGA (1024 X 768)	60.023	75.029	78.750
MAC (640 X 480)	35.000	66.667	30.240
MAC (832 X 624)	49.726	74.551	57.284
MAC (1152 X 870)	68.681	75.062	100.000

## Auto-Config

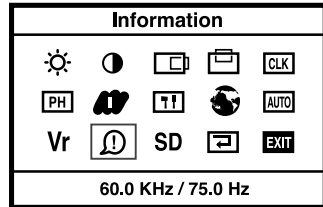


MENU ► - + ► SELECT ► - +

1. Press the Menu button.
2. Use -, + to move the Auto-config ICON.
3. Use SELECT button to select it.
4. Use - or + to readjust the display condition.

In most cases, Auto-Config adjusts display appropriately. Use PH or adjust CLK in accordance with graphic card to fine tune the display.

## Information

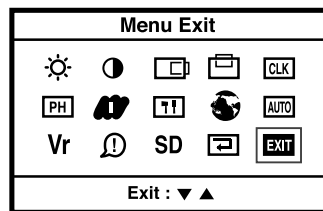


MENU ► - +

1. Press the Menu button.
2. Use -, + to move the Auto-config ICON.

You can know a display information (Horizontal, Vertical Frequency)

## Menu Exit

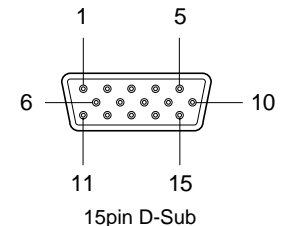


MENU ► - + ► SELECT

1. Press the Menu button.
2. Use -, + to move the Exit ICON.
3. Press SELECT button to exit.

## Pin assignment table D-Sub Mini 15pin connector

Pin No.	Assignment	Pin No.	Assignment
1	Red Video	9	N.C
2	Green Video	10	Ground
3	Blue Video	11	Ground
4	N.C	12	SDA
5	Ground	13	H.Sync
6	Red Video Ground	14	V.Sync
7	Green Video Ground	15	SCL
8	Blue Video Ground		



# Specification

Model	I	B15BF
LCD Panel	Type	Amorphous active matrix super TFT LCD
	Screen Size	38.1cm (Diagonal)
	Maximum Resolution	1024 X 768 @ 75 Hz
	Pixel Range	0.297 mm X 0.297 mm
	Display Colors	262,144 Color
	Contrast Rate	300 : 1
	Visual Angle	70° / 70° / 55° / 60° (Left / Right / Up / Down)
	Response Speed	25 ms
	Brightness	250 cd/m <sup>2</sup>
Synchronization	Horizontal Frequency	80 kHz (Max.)
	Vertical Frequency	75 Hz (Max.)
Video Input	Video Signal	Analog RGB (0.714 Vpp) 75 ohm
	Synchronous Signal Mode	H, V Separate TTL Sync, SOG, COMPOSITE
Power Consumption	Maximum	47 W
	Power Saving Mode	Under 5 W
Control key	Front Part	MENU, SELECT/AUTO, POWER, -, +SWITCH
Power Adapter		Input: 85/265V (50~60 Hz), Output: 12V, 4.5A, 54W
Wall Mount		VESA Standard
Safety Standard & EMI	Safety Standard	UL, CE, TUV, CB
	EMI	FCC-B
	Low Radiation	MPR-II
Dimension	Size and Weight	358 X 128 X 346 / 3.77 Kg

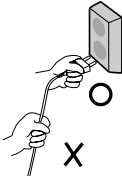
# Troubleshooting

Power LED is off. No picture.	▷	<ul style="list-style-type: none"> <li>Check the power connection. (Refer to page 4)</li> </ul>
Message, "No signal." is displayed on the screen.	▷	<ul style="list-style-type: none"> <li>Check the computer connection cable. (Refer to page 4)</li> <li>Check if computer power is on.</li> </ul>
Screen looks to be run down.	▷	<ul style="list-style-type: none"> <li>Check the signal cable between monitor and computer. (Refer to page 4)</li> <li>Perform Auto_config.</li> </ul>
Screen is not clear.	▷	<ul style="list-style-type: none"> <li>Perform Clock and Adjust PHASE.</li> <li>Switch off/on the monitor.</li> <li>Remove accessories (Video extension cable and others) and switch on.</li> </ul>
Display is unstable and trembling.	▷	<ul style="list-style-type: none"> <li>Check the resolution and frequency of computer and video card, and set up the again in reference to the current monitor mode and standard signal mode table.</li> </ul>

Color is irregular.	▶	<ul style="list-style-type: none"> <li>• Adjust COLOR at User Mode in OSD Color Menu.</li> </ul>
Double images or 'ghosts'.	▶	<ul style="list-style-type: none"> <li>• Check the resolution and frequency of computer and video card, and set up a gain in reference to the current monitor mode and standard signal mode table.</li> </ul>
Picture is dark.	▶	<ul style="list-style-type: none"> <li>• Adjust COLOR at User Mode in OSD Color Menu.</li> </ul>
Picture is biased or cut or too wide.	▶	<ul style="list-style-type: none"> <li>• Perform Auto-Config.</li> </ul>
Power LED turns into amber or blinking amber.	▶	<ul style="list-style-type: none"> <li>• Monitor is in power saving mode.</li> </ul>

# Warning

To prevent damage or loss, please read this warning carefully.



- When connecting/disconnecting the plug, pull out the plug itself, and never pull the plug to prevent fire caused by short.



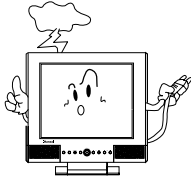
- To prevent electric shock, do not connect/disconnect the plug with wet hand.



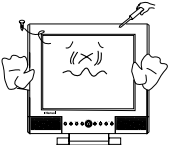
- If you see smoke or smell something burning, stop using the unit, switch off the power, pull out the plug, and then contact your local service station.



- To prevent fire, do not connect a large number of equipment in a single line.



- To prevent fire and electric shock, pull out the plug in case of thunder and lightning.



- To prevent fire and electric shock, do not try to take the monitor apart or repair it yourself. Contact your local service station or customer service center for inspection, modification or repair.

M e m o