

Installing Monitor Driver

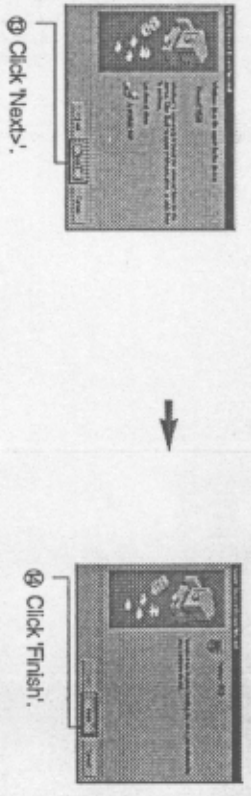
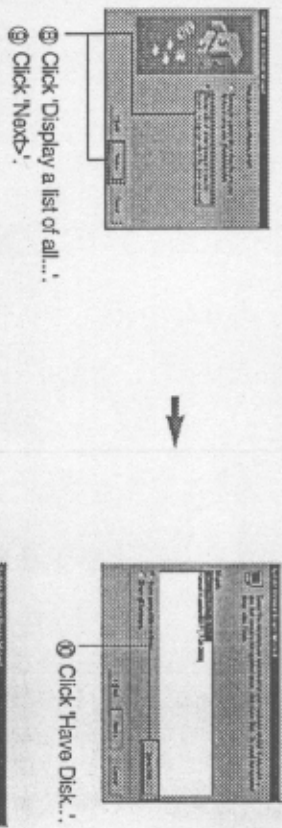
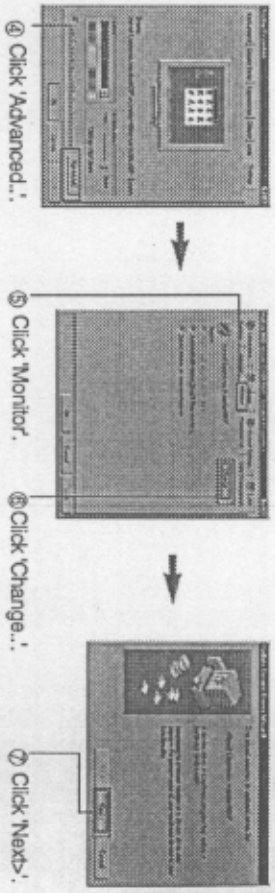
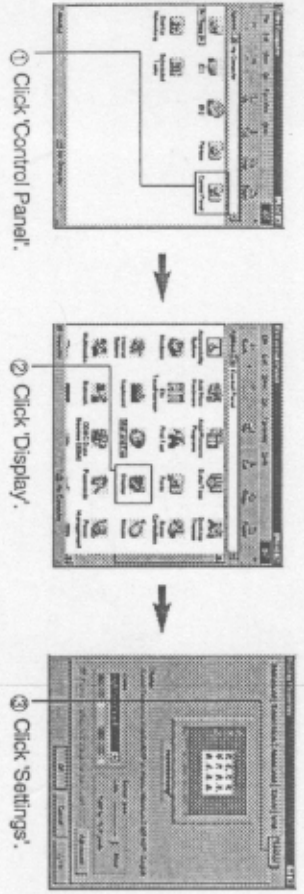
Run (Click) "Install" at Floppy driver and select the model name to set the optimum display in Window 95, 98 or 2000.
▶ Use the Driver provided.

Automatic Installation

1. Insert the Diskette to the Floppy Diskette driver.
2. Double-click "Install.exe".
3. Select the model(H530) and click "OK" button.
4. Select inf file, and then click "OK" button.
5. Click "Exit" button to close the installation.

Manual Installation

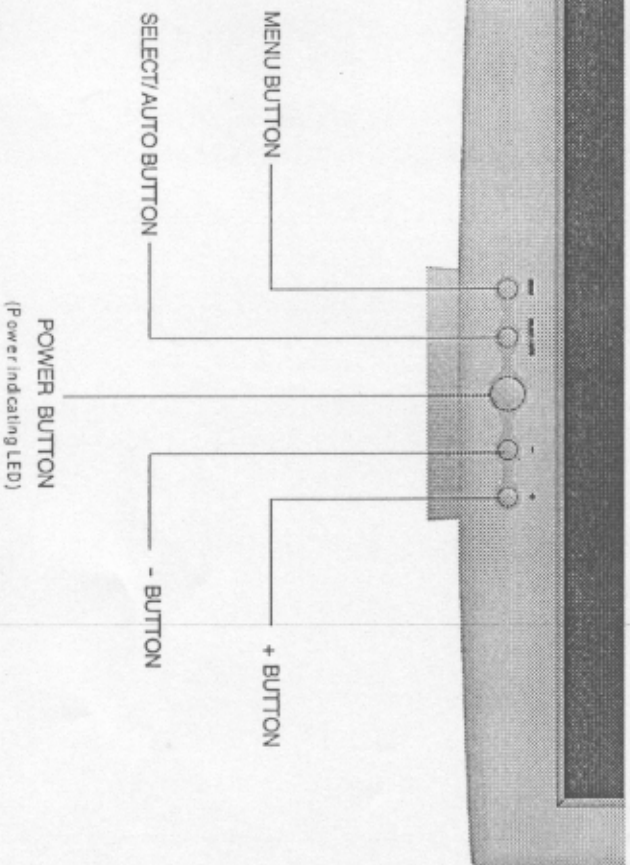
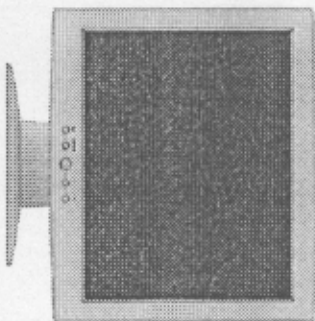
1. Insert the Diskette to the Floppy Diskette driver.
2. Click "My Computer" and follow the procedure below.



3. Select "Exit" if the monitor model is changed, and then reboot the Windows.

Name and Function of Front

Front panel



Functions

- ◆ **Power button**
Power button is located in the lower center of the Front Bezel. You can push the button to turn on/off the power.
- ◆ **Power Indicating LED**
If the green LED around the power switch turns into blinking amber, it indicates the monitor is in power saving mode.
- ◆ **On Screen Display (OSD) Function Button**
OSD buttons on the front of bezel perform the following functions.
 - **MENU** : Press this button to display menus.
 - **SELECT/AUTO** : Press this button, when OSD is not displayed, to perform automatic setting.
When OSD is displayed, You can select icons.
 - **POWER** : Power button.
 - **-/+** : By pressing these button when OSD is displayed, You can move cursor into the menus which you want.
After press the SELECT button, you can change gauge level or select sub menus.

Power Management Feature

When not in use for a long time, the monitor automatically reduces its power consumption, meeting power saving standards of EPA and NUTEK.

The monitor is equipped with a power saving circuit that conforms to the world-standard Display Power Manager Signalling (DPMS) mode of Video Electronics Standard Association (VESA). The power management feature requires that the video card of the computer should support DPMS function.

Status Color of LED Power Consumption

Normal	Green	Normal Power
DPMS mode	Amber Blinking (2 second interval)	5 W or Below

No image is displayed with Amber blinking.

Monitor is in power saving mode.

Use mouse or keyboard to release power saving mode.

No image is displayed without LED on.

Power cable plug must be pulled out.

Check the power plug on monitor and on the wall.

"Out of range" displayed on the screen.

This message is displayed when the signal from video card exceeds the maximum frequency of the monitor. Readjust resolution and frequency in accordance with the monitor capacity. (Refer to Standard Signal Table)

Adjusting OSD

Brightness

MENU → - + SELECT → +

1. Press the Menu button.
2. Use -,+ to move Brightness ICON.
3. Use SELECT button to select it.
4. Use -,+ to adjust the brightness.

Contrast

MENU → - + SELECT → +

1. Press the Menu button.
2. Use -,+ to move Contrast ICON.
3. Use SELECT button to select it.
4. Use -,+ to adjust the contrast.

Horizontal Position

MENU → - + SELECT → +

1. Press the Menu button.
2. Use -,+ to move H-Position ICON.
3. Use SELECT button to select it.
4. Use -,+ to adjust display left or right.