

INFORMATION TO USER :

This equipment has been tested and found to comply with the limits of a Class B digital device, pursuant to Part 15 of the FCC Rules.

These limits are designed to provide reasonable protection against harmful interference in a residential installation. This equipment generates, uses and can radiate radio frequency energy and, if not installed and used in accordance with the instructions, may cause harmful interference to radio communications.

However, there is no guarantee that interference will not occur in a particular installation; if this equipment does cause harmful interference to radio or television reception, which can be determined by turning the equipment off and on, the user is encouraged to try to correct the interference by one or more of the following measures:

1. Reorient/Relocate the receiving antenna.
2. Increase the separation between the equipment and receiver.
3. Connect the equipment into an outlet on a circuit different from that to which the receiver is connected.
4. Consult the dealer or an experienced radio/TV technician for help.

Caution: Any changes or modifications in construction of this device which are not expressly approved by the party responsible for compliance could void the user's authority to operate the equipment.

ENERGY STAR AS an ENERGY STAR partner, Hansol Electronics Inc has determined that product meets Energy Star guidelines for energy efficiency.

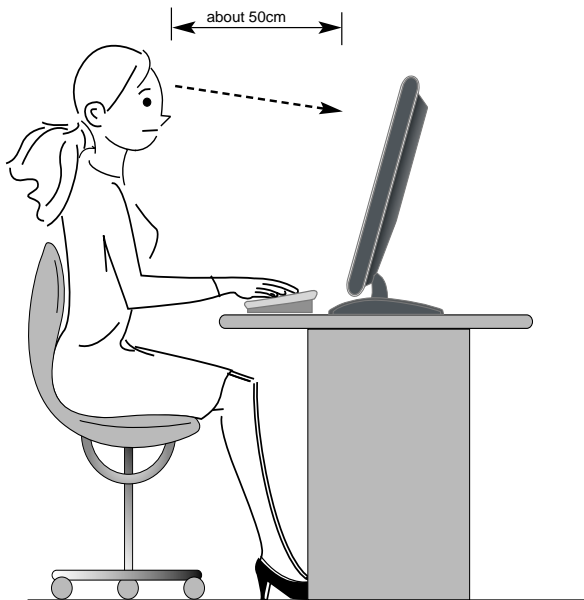


Table of Contents

Parts	3
Connection to Computer	4
How to Adjust Monitor Angle	5
Installing Monitor Driver	6
Name and Function of Front Keys	8
Power Management Feature	10
PC Menu	11
Video Menu	15
TV	18
SOUND Menu	21
Configuration OSD Menu	21
Picture In Picture(PIP) function	26
Remote Controller	27
Standard Signal Table	28
Specification	29
Troubleshooting	30
Warning	32

Good Posture Guide

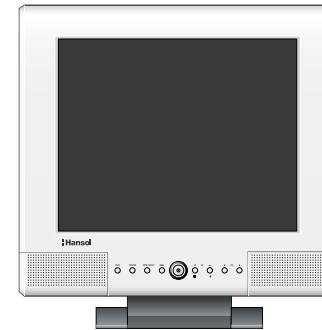
- ◆ Place the monitor to face the user and then adjust the monitor angle.
- ◆ Take a break (for about 10 minutes) at every hour during the work with monitor.
- ◆ Refer to the following figure to take the correct posture.



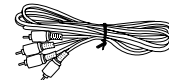
- Look down the monitor below the horizon.
- Adjust the monitor to prevent reflection.
- Relax shoulders and arms, and sit back on the chair.
- Adjust the monitor stand to acquire required angle.
- Maintain the arms horizontally and place hands softly on the keyboard.
- Keep feet flat on the ground.

Parts

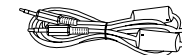
Parts



LCD Monitor



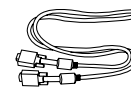
RCA Cable (Pair)



Stereo Cable



S-VHS Cable



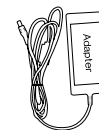
Signal Cable



Antenna Cable



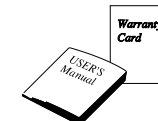
AC Power Cable



12V-DC Adapter



Remote Controller/Battery



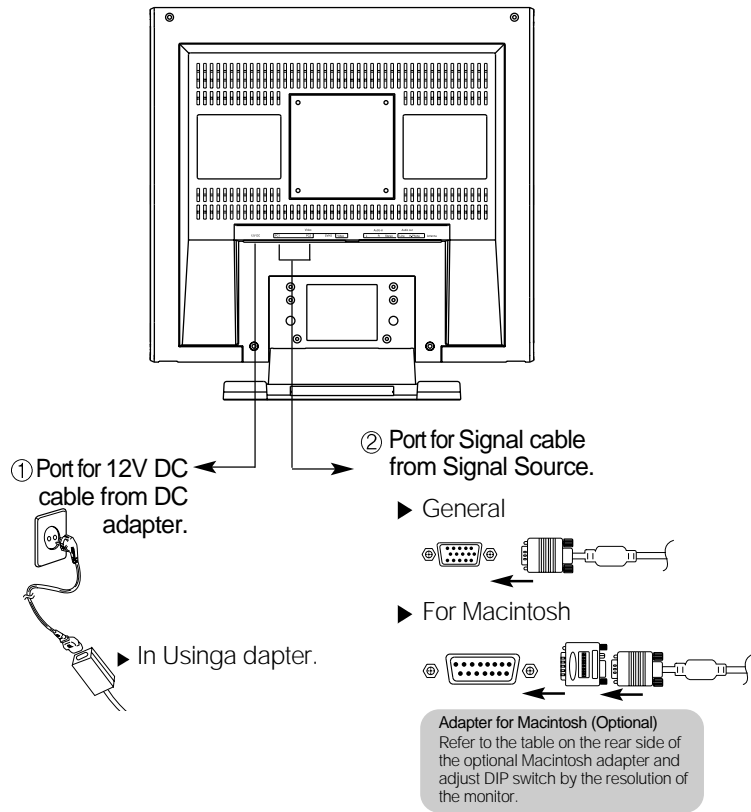
User's Manual / Warranty Card



Installation Diskette

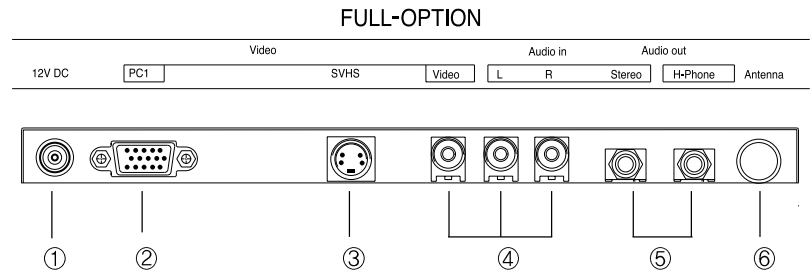
Connection to Computer

Basic Connection



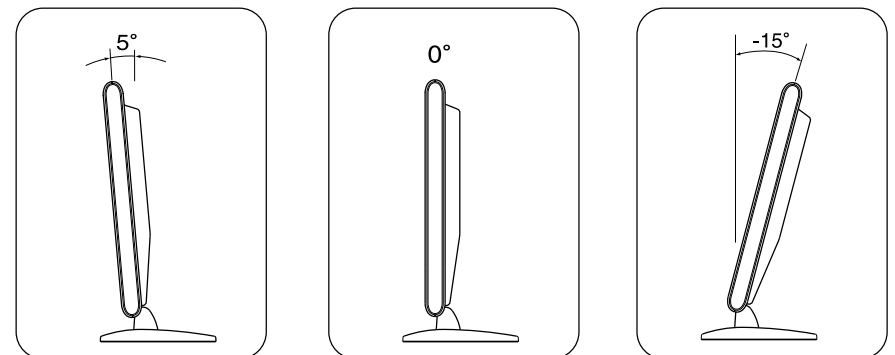
1. Use 220 V or 110 V. (Free Voltage)
2. Connect monitor and computer via Signal cable (See figure ②)
3. Power on the monitor and computer.

Applied Connection



1. Connect the adapter to "12V DC" input terminal.
2. Connect the computer cable to PC1.
3. Connect video (V1) connection cable or SVHS (V2) connection cable to DVD, VCR or camcorder.
4. Connect audio output (computer, DVD, VCR or camcorder) to Audio In (L), Audio In (R) or Audio In (Stereo).
5. Connect headphone or earphone to H-Phone terminal.
6. Connect antenna or CATV connection cable to "Antenna" terminal.

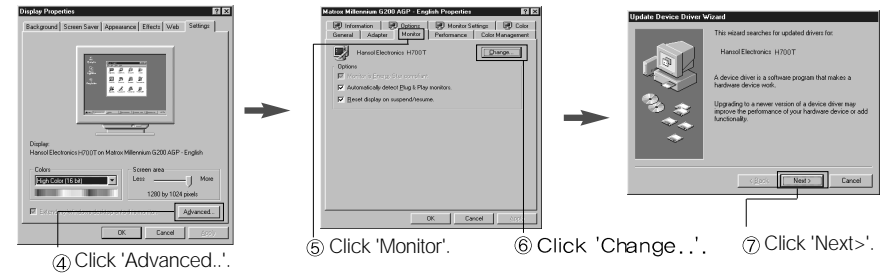
How to Adjust monitor Angle



Installing Monitor Driver

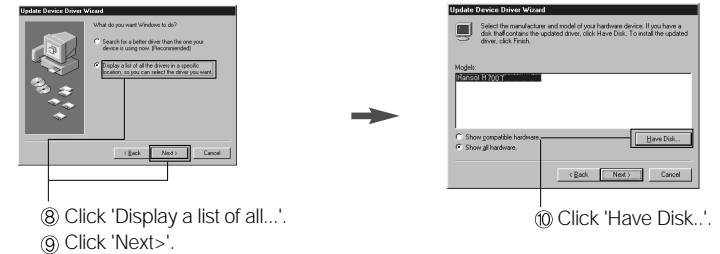
Run (Click) Install at CD-ROM driver and select the product model to set the optimum display in Window 95 or 98.

- ▶ Use the Driver CD provided.
- ▶ Download the latest driver from home page of Hansol Electronics Inc. (<http://www.hansolel.co.kr>).



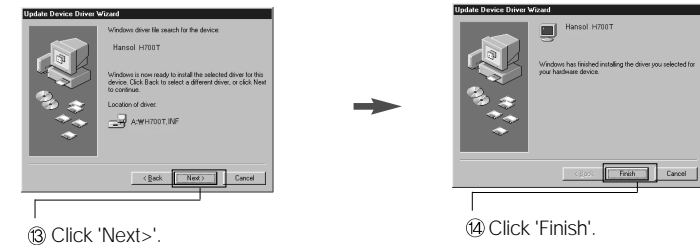
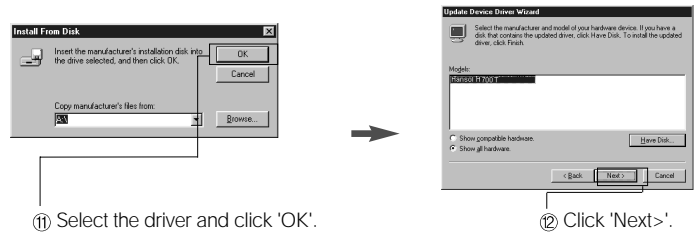
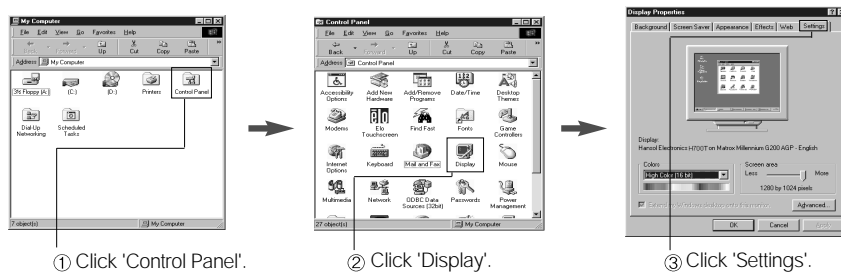
Automatic Installation

1. Insert the CD in the CD-ROM driver.
2. "Installation Manager" window appears.
(Or, double-click Install.exe in the CD-ROM driver folder using search function.)
3. Click "Driver Installation" icon.
4. Select the model and click "OK".
5. Select inf file of the model in the Drivers folder in CD-ROM driver, and then click "OK" button.
6. Click "Exit" to close the installation.



Manual Installation

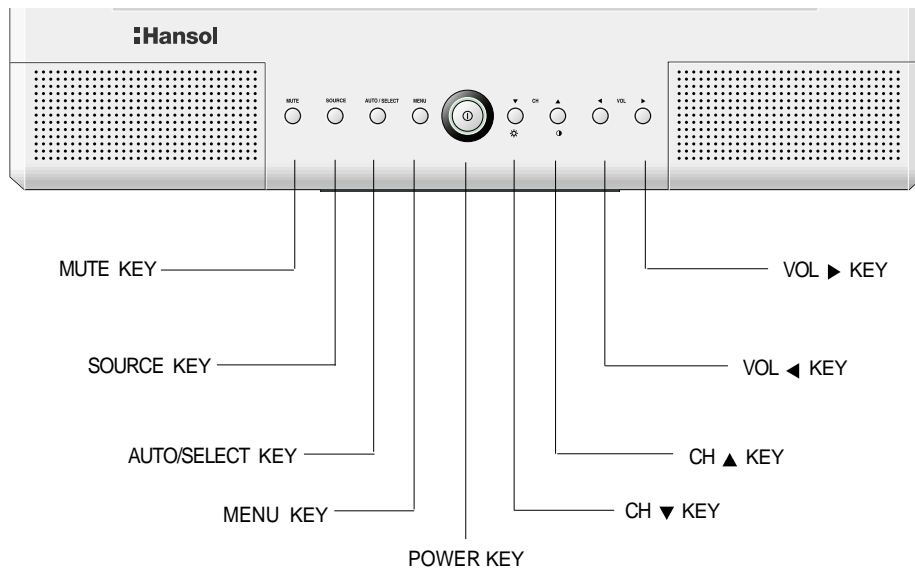
1. Insert the CD in the CD-ROM driver.
2. Click 'My Computer' and follow the procedure below.



3. Select Exit if the monitor model is changed, and then reboot Windows.

Name and Function of Front Keys

Front panel



Functions

- ◆ **Power Switch**
Power switch is located in the lower center of the monitor stand. You can push the switch to turn on/off the power.
- ◆ **Power Saving LED**
 - Dark : Power off
 - Green : Normal mode
 - Green blinking : Power Saving mode or check signal Cable mode.
- ◆ **Signal Source LED**
Each of the five LEDs (from left; PC1, PC2, TV, V1 and V2) over the power switch indicates the source of the signal which the monitor displays.
- ◆ **On Screen Display (OSD) Function Button**
OSD buttons on the front of the monitor perform the following functions.
 - **MUTE** : Cut off sound
 - **SOURCE** : monitor displays source of the signal in order.
(PC → VIDEO → S/VIDEO → TV)
 - **AUTO/SELECT** : Press this button, when OSD is not displayed, to perform automatic setting. If you press this button when OSD is displayed, you can select icons.
 - **MENU** : Press this button to display menus. if you press this button when OSD is displayed, You can switch display to the previous menu and exit menu.
 - **POWER** : Power switch.
 - **▲CH▼** : Press this button to select TV channel in TV mode when OSD is not displayed. Or press the button, when OSD is displayed, to move the cursor into the menus which you want. when OSD is not displayed, you can adjust brightness or contrast in PC/VIDEO mode.
 - **◀VOL▶** : Press this button to adjust volume of audio when OSD is not displayed. By pressing this button when OSD is displayed, you can move cursor into the menus or change gate level.

Power Management Feature

When not in use for a long period of time, the monitor automatically reduces its power consumption, meeting power saving standards of EPA and NUTEK.

The monitor is equipped with a power saving circuit that conforms to the world-standard Display Power Manager Signalling (DPMS) mode of Video Electronics Standard Association (VESA).

The power management feature requires that the video card of the computer should support DPMS function.

Status	LED Sign	Power Consumption
Normal		Normal Power
DPMS mode	Green Blinking	5 W or Below

No image is displayed with LED blinking.

Monitor is in power saving mode.

Use mouse or keyboard to release power saving mode.

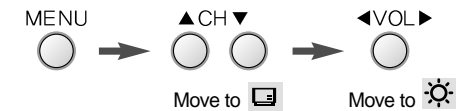
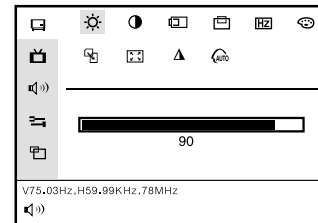
No image is displayed without LED on.

Power cable plug must be pulled out.

Check the power plugs on monitor and on the wall.

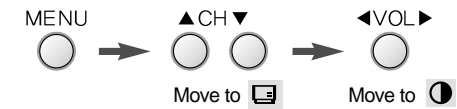
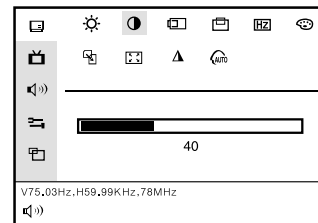
PC MENU

Brightness



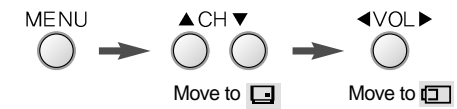
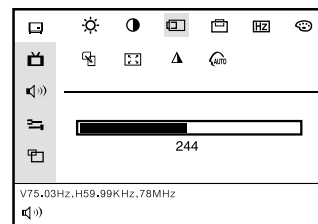
※Use ◀ to have the monitor darker, ▶ to brighter.

Contrast



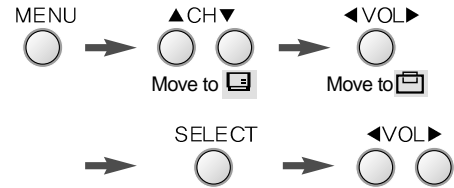
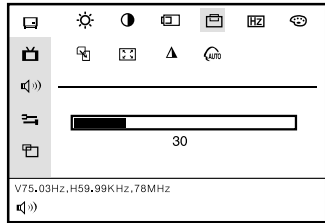
※Use ◀ or ▶ to adjust contrast.

Horizontal Position



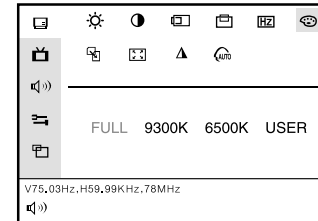
※Use ◀ or ▶ to adjust display left or right.

Vertical Position



※ Use ◀ or ▶ to adjust display upward or downward.

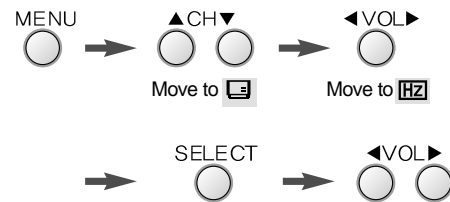
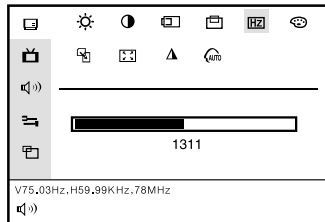
Preset Color



Move to
"FULL,9300K,6500K"

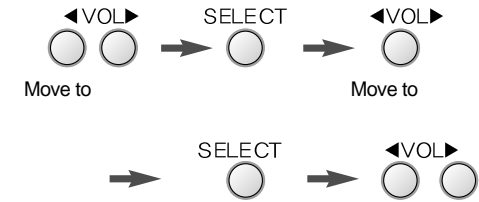
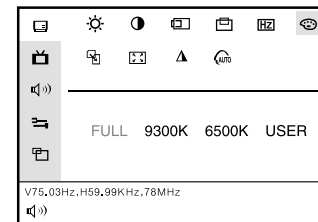
- ※FULL : Red, Green, Blue full
- ※9300K : Bluish white
- ※6500K : Reddish white

Clock



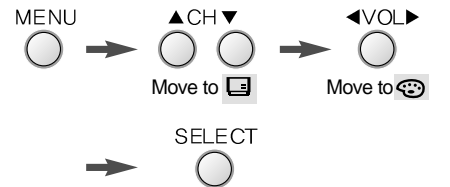
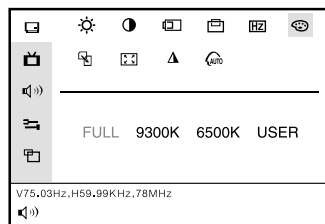
※ If Auto Adjustment function fails to remove video noise,
Use ◀ or ▶ to remove vertical noise.
(Adjusting phase is required after the adjustment of
Pixel Frequency.)

User Color

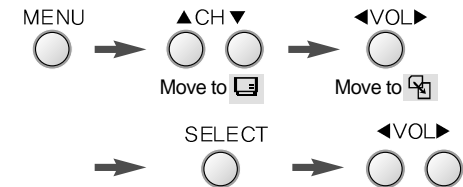
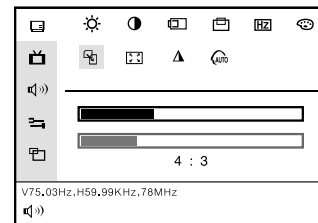


※ Use ◀ or ▶ to increase or decrease each color.

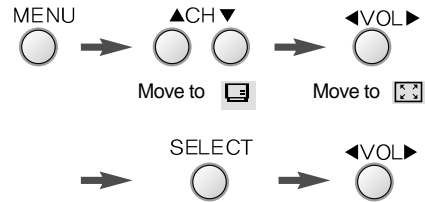
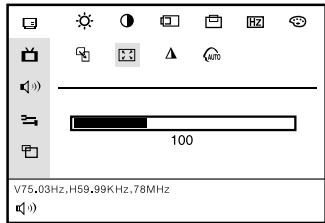
Color



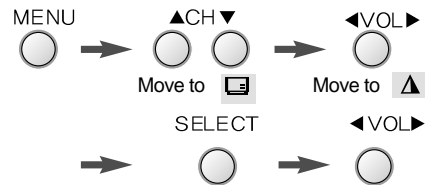
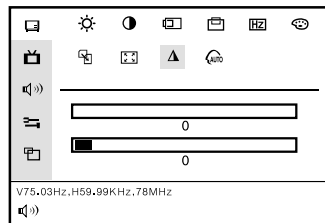
Scaling



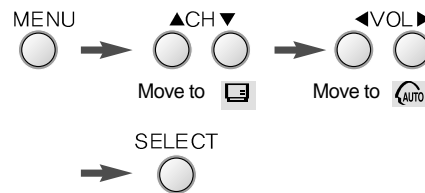
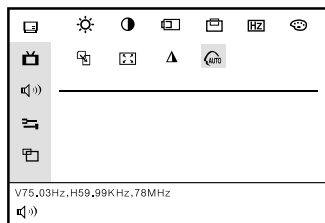
ZOOM



Sharpness/Phase



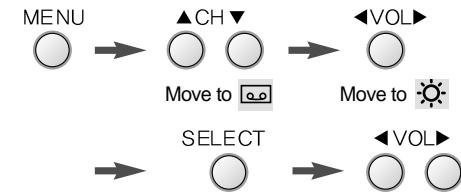
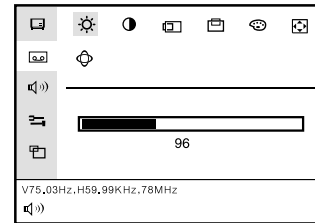
Auto - config



※ In most cases, AUTO ADJUSTMENT adjusts display appropriately. Use PHASE or adjust PIXEL FREQ In accordance with graphic card to fine tune the display.

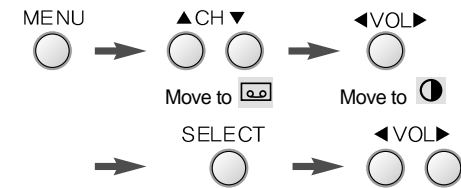
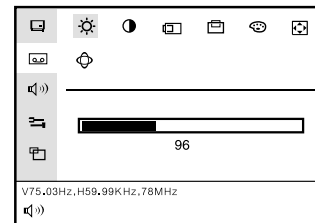
Video Menu

Brightness



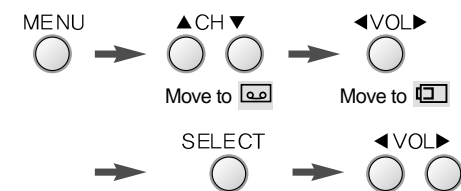
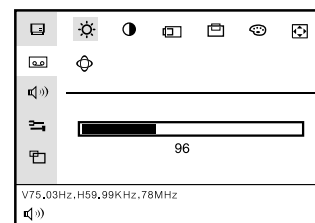
※Use ◀ to have the monitor darker, ▶ to brighter.

Contrast



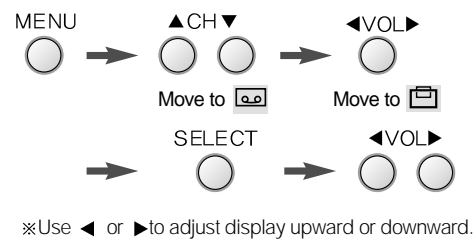
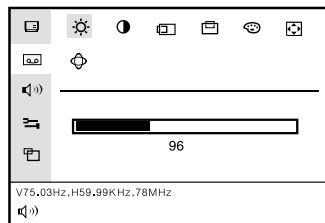
※Use ◀ or ▶ to adjust contrast.

Horizontal Position

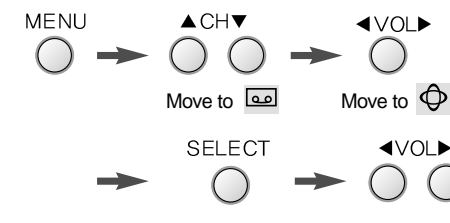
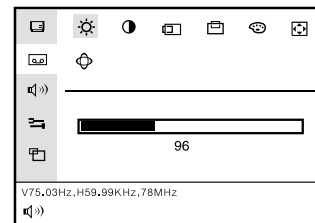


※Use ◀ or ▶ to adjust display left or right.

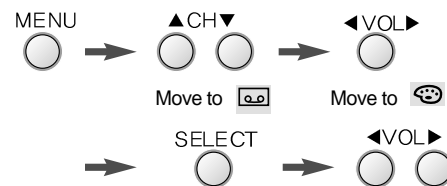
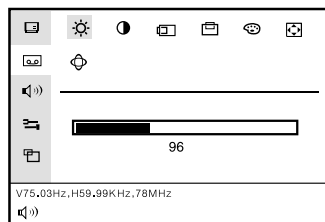
Vertical Position



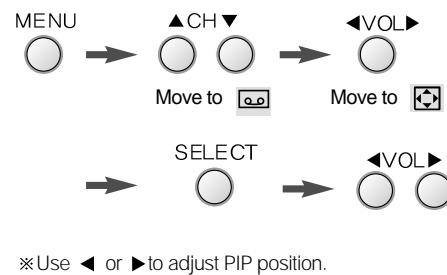
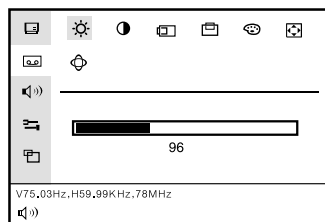
Sharpness



Hue/Saturation

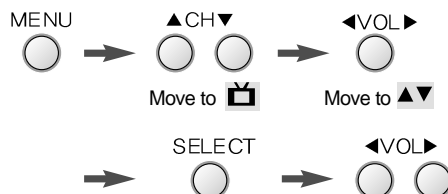
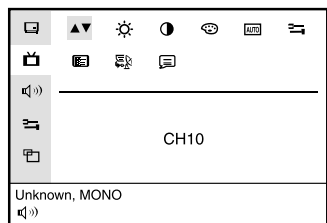


PIP Position



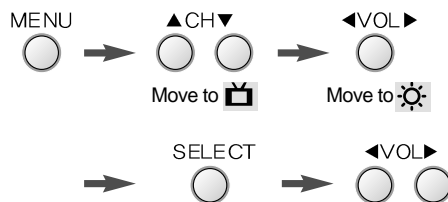
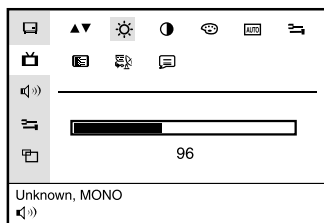


Channel



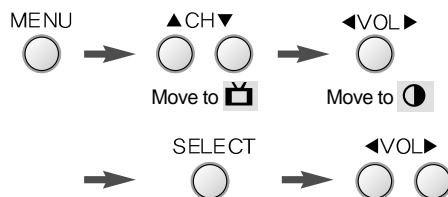
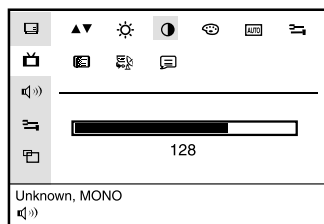
※Use ◀ or ▶ to select channel.

Brightness



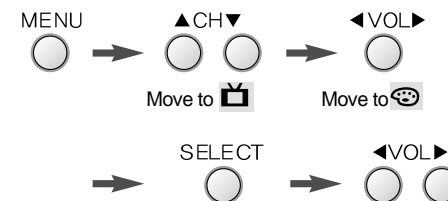
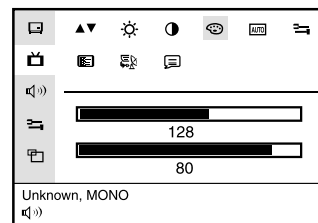
※Use ◀ to have the monitor darker, ▶ to brighter.

Contrast

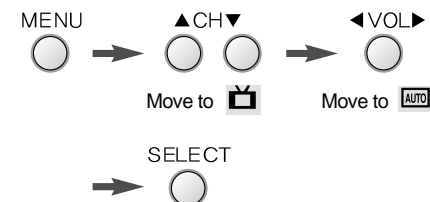
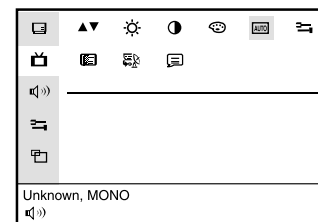


※Use ◀ or ▶ to adjust contrast.

Hue/Saturation

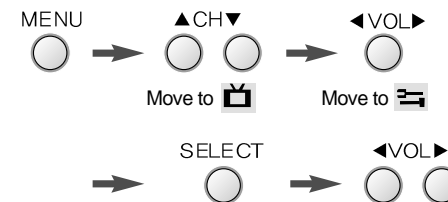
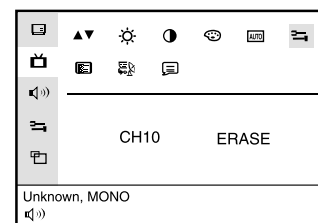


Auto Channel Search



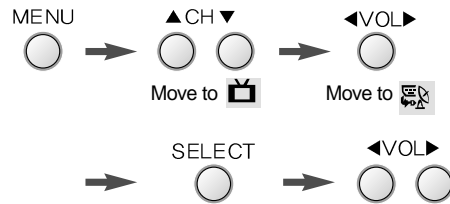
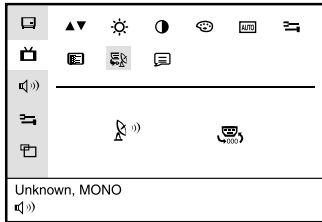
※Channel is searched automatically and saved.

Select Configuration



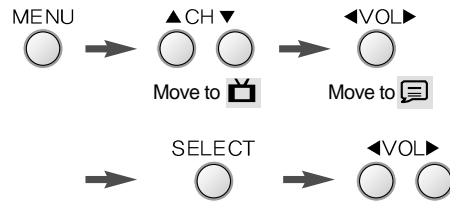
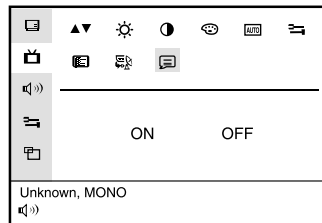
※When signal is weak or the channel is not used for broadcasting, it is available to add or delete the channel.

Broadcast type



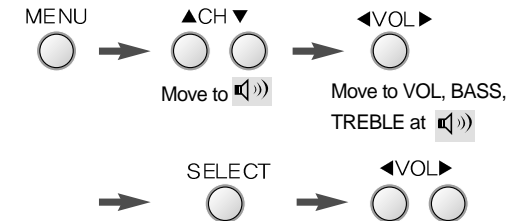
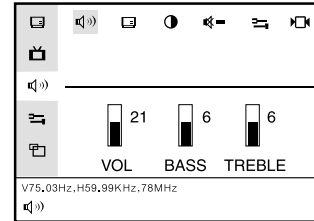
※Use ◀ or ▶ to select cable/air.

Caption

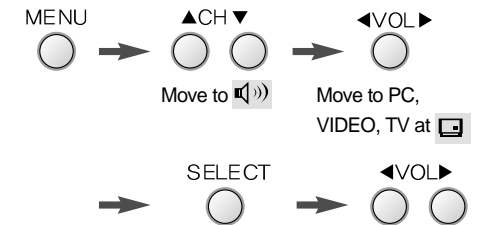
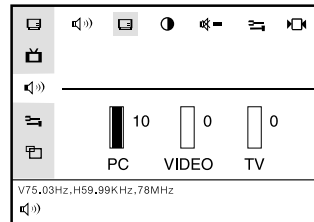


SOUND Menu

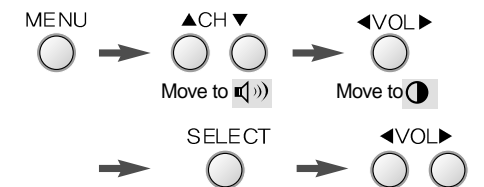
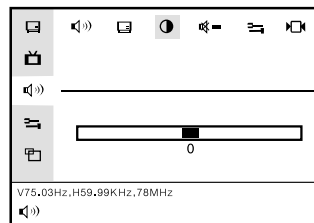
Sound Control



Sound Balance

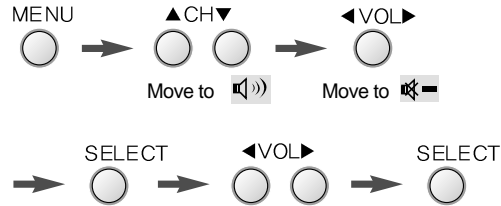
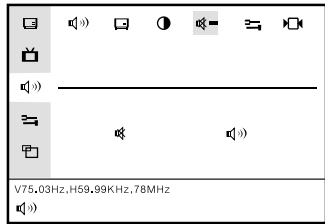


Speaker Balance



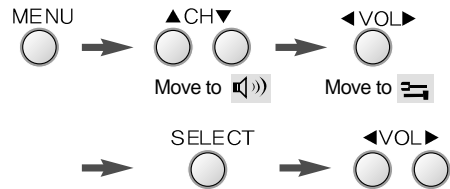
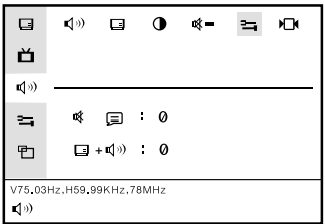
Configuration OSD Menu

Mute

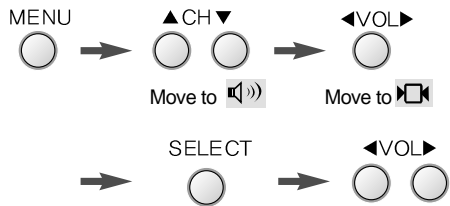
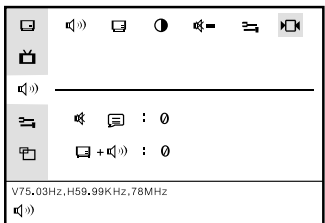


※ Use ◀ or ▶ to Sound On/Off.

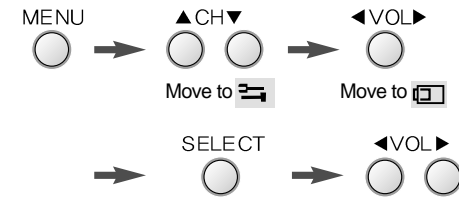
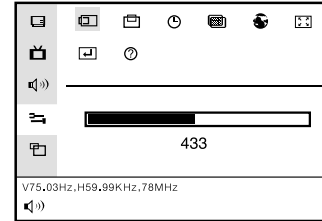
Config Control



SAP

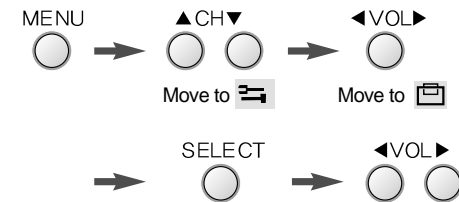
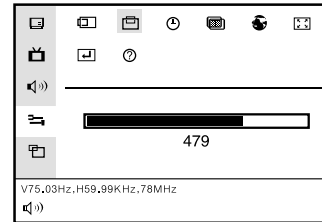


OSD H-Position



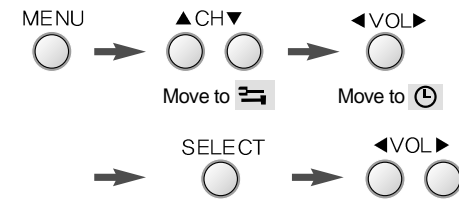
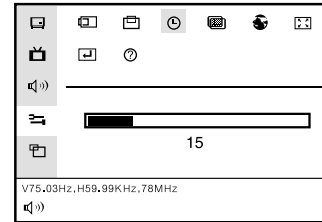
※Use ◀ or ▶ to adjust OSDleft or right.

OSD V-Position

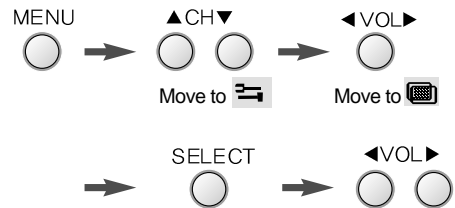
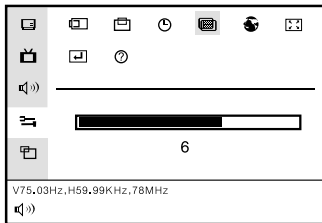


※Use ◀ or ▶ to adjust display upward or downward.

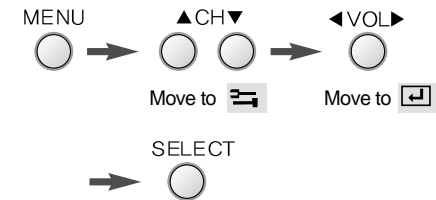
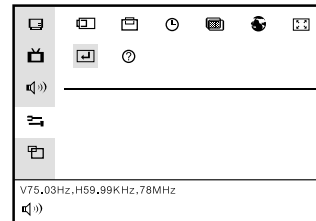
OSD On Time



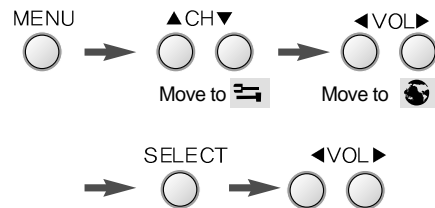
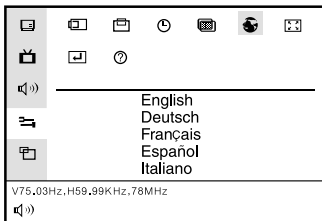
OSD Overlay



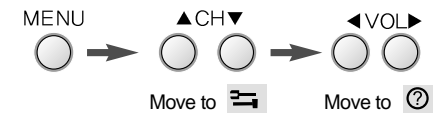
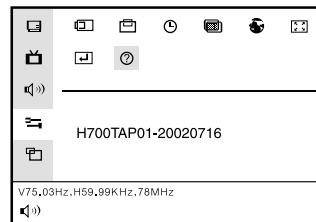
Factory Reset



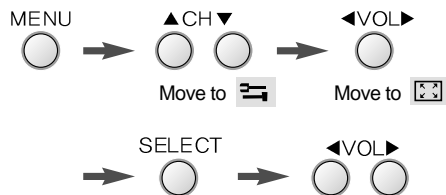
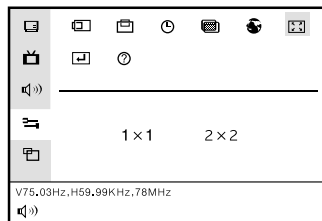
Language



Information

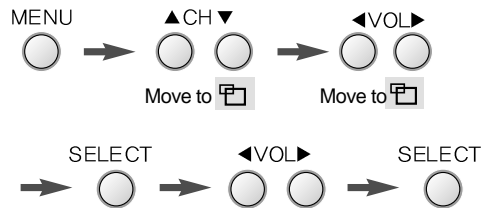
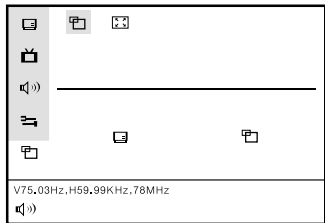


OSD Zoom



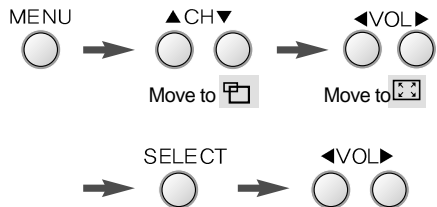
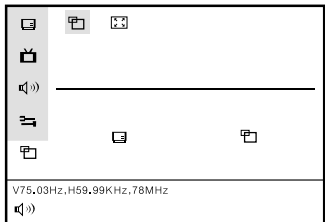
Picture In Pincture (PIP) function

PIP On/Off

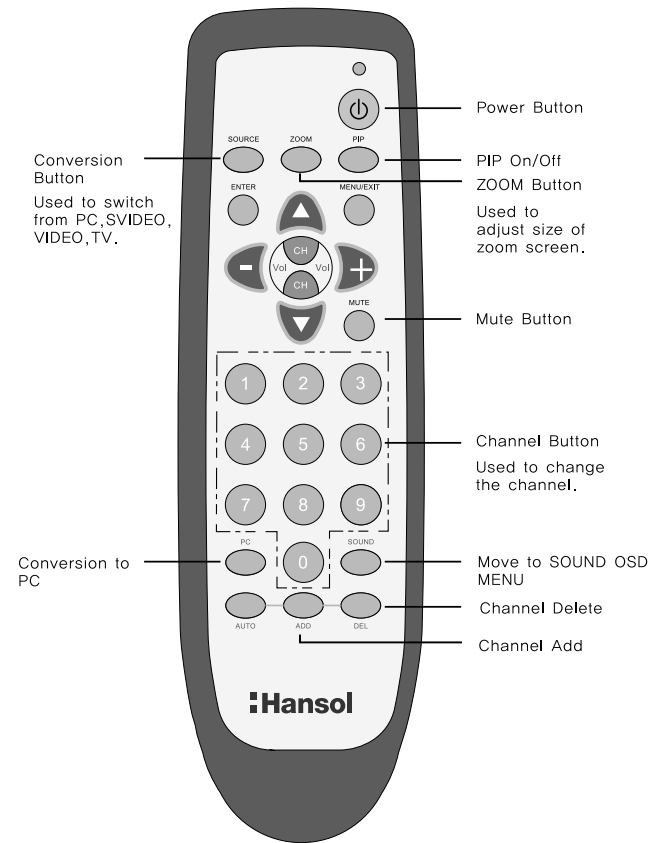


※ [PIP On Icon] : 다중화면 On [PIP Off Icon] : 다중화면 Off

PIP Position



Remote Controller



Standard Signal Table

Resolution	Horizontal Frequency (KHz)	Vertical Frequency (Hz)	Clock Frequency (MHz)
VGA (720 X 400)	31.469	70.087	28.322
VGA (640 X 480)	31.469	59.940	25.175
VGA (640 X 480)	37.500	75.000	31.500
VGA (640 X 480)	43.269	85.008	36.000
SVGA (800 X 600)	46.875	75.000	49.500
SVGA (800 X 600)	53.674	85.061	56.250
XGA (1024 X 768)	48.363	60.004	65.000
XGA (1024 X 768)	60.023	75.029	78.750
XGA (1024 X 768)	68.677	84.997	94.500
SXGA (1280 X 1024)	63.981	60.020	108.000
SXGA (1280 X 1024)	79.976	75.025	135.000
MAC (640 X 480)	35.000	66.667	30.240
MAC (832 X 624)	49.726	74.551	57.284
MAC (1152 X 870)	68.681	75.062	100.000

"Out of range" displayed on the screen.

This message is displayed when the signal from video card exceeds the maximum frequency of the monitor. Readjust resolution and frequency in accordance with the monitor capacity. (Refer to Standard Signal Table)

Specification

Model	H700T (B17BF)	
LCD Panel	Type	Amorphous active matrix super TFT LCD
	Screen Size	43.2cm (Diagonal)
	Maximum Resolution	1280 X 1024@75 Hz
	Pixel Range	0.264 mm X 0.264 mm
	Maximum Colors	16.7 M
	Contrast Rate	350 : 1
	Visual Angle	75° / 75° / 65° / 60° (Left / Right / Up / Down)
	Response Speed	25 ms
	Brightness	250 cd/m ²
	Synchro nization	Horizontal Frequency
Vertical Frequency		85 Hz (Min.)
Video Input	Video Signal	Analog RGB (0.714 Vpp)
	Synchronous Signal Mode	H, V Separate TTL Sync,
Power Consumption	Maximum	50 W
	Power Saving Mode	Under 5 W
Control key	Front Part	MUTE, SOURCE, AUTO/SELECT, MENU,CH, VOL SWITCH
Power Adapter		Input: 85/265V (50-60Hz), Output: 12V, 5A, 60W
Multi-Media	TV	NTSC
	Audio	3 Watt Speaker X 2 (Max.)
	Video	CVBS, S-VHS
	Wall Mount	VESA Standard
Safety Standard & EMI	Safety Standard	UL
	EMI	FCC
	Low Radiation	MPR-II
Dimension	Size and Weight	436 X 448 X 197 / 6.3 Kg

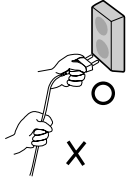
Troubleshooting

Power LED is off. No picture.	<ul style="list-style-type: none"> • Check the power connection. (Refer to page 4)
Message, "Message." is displayed on the screen.	<ul style="list-style-type: none"> • Check if computer power is on.
Message, "No cable." is displayed on the screen.	<ul style="list-style-type: none"> • Check the computer connection cable. (Refer to page 4)
Screen looks to be run down.	<ul style="list-style-type: none"> • Check the signal cable between monitor and computer. (Refer to page 4) • Perform AUTO ADJUSTMENT.
Screen is not clear.	<ul style="list-style-type: none"> • Perform FREQUENCY ADJUSTMENT and Adjust PHASE. • Switch off/on the monitor. • Remove accessories (Video extension cable and others) and switch on.
Display is unstable and trembling.	<ul style="list-style-type: none"> • Check the resolution and frequency of computer and video card, and set up the again in reference to the current monitor mode and standard signal mode table.
Color is irregular.	<ul style="list-style-type: none"> • Adjust COLOR at User Mode in OSD Color Menu.

Double images or 'ghosts'.	<ul style="list-style-type: none"> • Check the resolution and frequency of computer and video card, and set up a gain in reference to the current monitor mode and standard signal mode table.
Picture is dark.	<ul style="list-style-type: none"> • Adjust COLOR at User Mode in OSD Color Menu.
Picture is biased or cut or too wide.	<ul style="list-style-type: none"> • Perform OSD ADJUSTMENT. • Perform AUTO ADJUSTMENT.
Power LED turns into amber or blinking amber.	<ul style="list-style-type: none"> • Monitor is in power saving mode.
No sound.	<ul style="list-style-type: none"> • Check the voice signal connection code or adjust volume.
Dead sound.	<ul style="list-style-type: none"> • Adjust BASS and TREBLE.
TV signal is not received.	<ul style="list-style-type: none"> • Check if the selected channel mode is in accordance with the channel mode of the area. • Select AUTO SEARCH to set up the channel automatically.

Warning

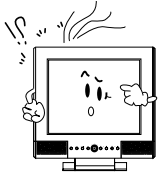
◆ To prevent damage or loss, please read this warning carefully.



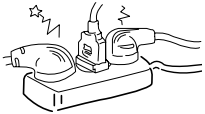
- When connecting/disconnecting the plug, pull out the plug itself, and never pull the plug to prevent fire caused by short.



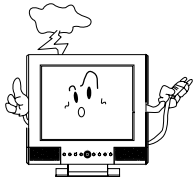
- To prevent electric shock, do not connect/disconnect the plug with wet hand.



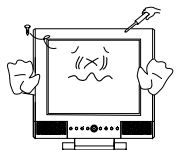
- If you see smoke or smell something burning, stop using the unit, switch off the power, pull out the plug, and then contact your local service station.



- To prevent fire, do not connect a large number of equipment in a single line.



- To prevent fire and electric shock, pull out the plug in case of thunder and lightning.



- To prevent fire and electric shock, do not try to take the monitor apart or repair it yourself. Contact your local service station or customer service center for inspection, modification or repair.

Memo