

Introduction.

Thank you for purchasing the Flash Memory Driver from HANSOLMS

Flash Memory Driver is a card reader/writer available in SMC (Smart Media Card) for new Apple iMac, and PC Compatible owners. Flash Memory Driver able to write/ read data from digital data to all text file. (provides transfer rates of up to 6Mbps) and extent memory capacity from 8M to 128M.

Flash Memory Driver, pictures, music, data, and more can now be shared easily between your digital device (camera, cell phone, MP3 player, etc) and connects to your computer.

FCC RF

INTERFERENCE STATEMENT

NOTE:

This equipment has been tested and found to comply with the limits for a Class B digital device, pursuant to Part 15 of the FCC Rules. These limits are designed to provide reasonable protection against harmful interference in a residential installation.

This equipment generates, uses and can radiate frequency energy and if not installed used in accordance with the instruction, may cause harmful interference to radio communication. However, there is no guarantee that interference will not occur in a particular installation.

If this equipment does cause harmful interference to radio or television reception which can be determined by turning the equipment off and on, the user is encouraged to try to correct the interference by one or more of the following measures.

- Reorient or relocate the receiving antenna.
- Increase the separation between the equipment and receiver.
- Connect the equipment into an outlet on a circuit different from that to which the receiver is connected.
- Consult the dealer or an experienced radio/TV technical for help.
- Only shielded interference cable should be used.

Finally, any changes or modification to the equipment by the user not expressly approved by the frantee or manufacturer could void the users authority to operate such equipment,

THIS DEVICE COMPLLES, WITH PART 15 OF THE FCC RULES. OPERATION IS SUBJECT TO THE FOLLOWING TWO CONDITIONS: (1) THIS DEVICE MAY NOT CAUSE HARMFUL INTERFERENCE, AND (2) THIS DEVICE MUST ACCEPT ANY INTERFERENCE RECEIVED, INCLUDING INTERFERENCE THAT MAY CAUSE UNDESIREED OPERATION.

SPECIFICATION

Read and Write SMC card capacity:

2MB, 4MB, 8MB, 16MB, 32MB, 128MB

SMC card format support

(SSFDC format->When driver Install)

PC format Support

You are able to plug and play without special driver file

(except Window 98)

windows 98/ME, 2000,XP , Mc OS support

UFI(USB Floppy Interface) protocol application

USB high-speed transfer read/write function

(Read transfer rate : 6MB, Write transfer rate : 3MB)

Secret Code function.

(Application algorism inner cryptograph)

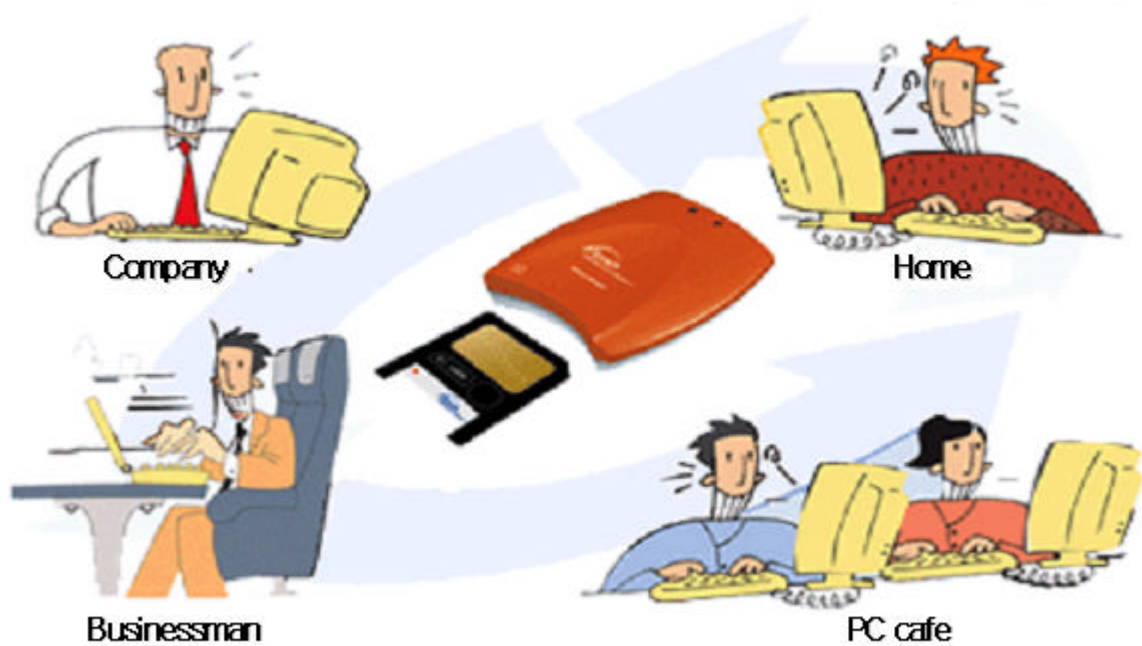
Draw power directly from USB port

Include USB extension cable (length: 1m)

APPLICATION

Data storage//

1. When I want to save high capacity file(glapic or animation file) and removable.
2. When are you want to save mp3, image, data file in the PC Caf or other pc.
3. In case capacity over 1.44MB, A disk so many time broken then very disable. ,
4. When are you want transfer data file from Other PC to your pc.
5. Because of too high capacity file didn't spend e-mail. You can able to flash memory driver.



Protect Function

1.If you want to have a removable or portable protect data.



Digital Device

1.You can now be shared easily between your digital device (camera, cell phone, MP3 player, etc) and your computer.



Part of Flash Memory Driver



1. USB connector (male)
transfer rates of up to 6Mbps
Plug & Play
networking

2. the smallest, lightweight

Design on removable and portable
Size:W xH xL
Weight:

3. SMC

SmartMedia™ is about one-thirds of the area of a conventional PC card and only 0.76 mm in thickness. This new storage card is expected to help electronic devices - including the digital still camera and various forms of portable information equipments-become even smaller in size

Part of Flash Memory Driver	Function
Red LED	Power on
Green LED	Activity state
SMC Card insert	SMC connector
USB connector	Plug can be connected to the USB port of Computer or Hub.

Installing the driver software

FLASH MEMORY DRIVER adopted Plug & Play form.

So you are use Flash Memory Driver before install CD expect Window 98

But if you want to SSFDC and Protect function. You must be installing the driver software.

The Flash Memory Driver is relatively easy to install and operate. To avoid complication during the installation process .So we are adopted auto installing form.

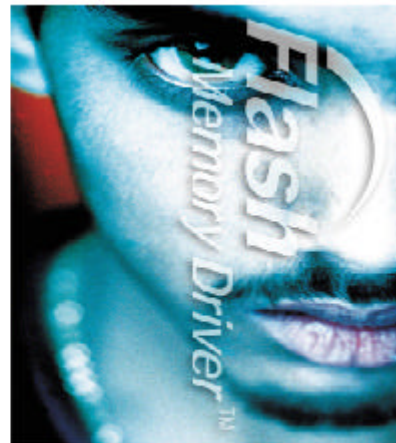
After insert Install CD you just click install button then You will then see a status window advising the progress of the current installation .

And Click "Finish" and restart your computer once the installation is complete.

1.Install CD insert CD-ROM .



2.Click Install button..



Hansolms Install

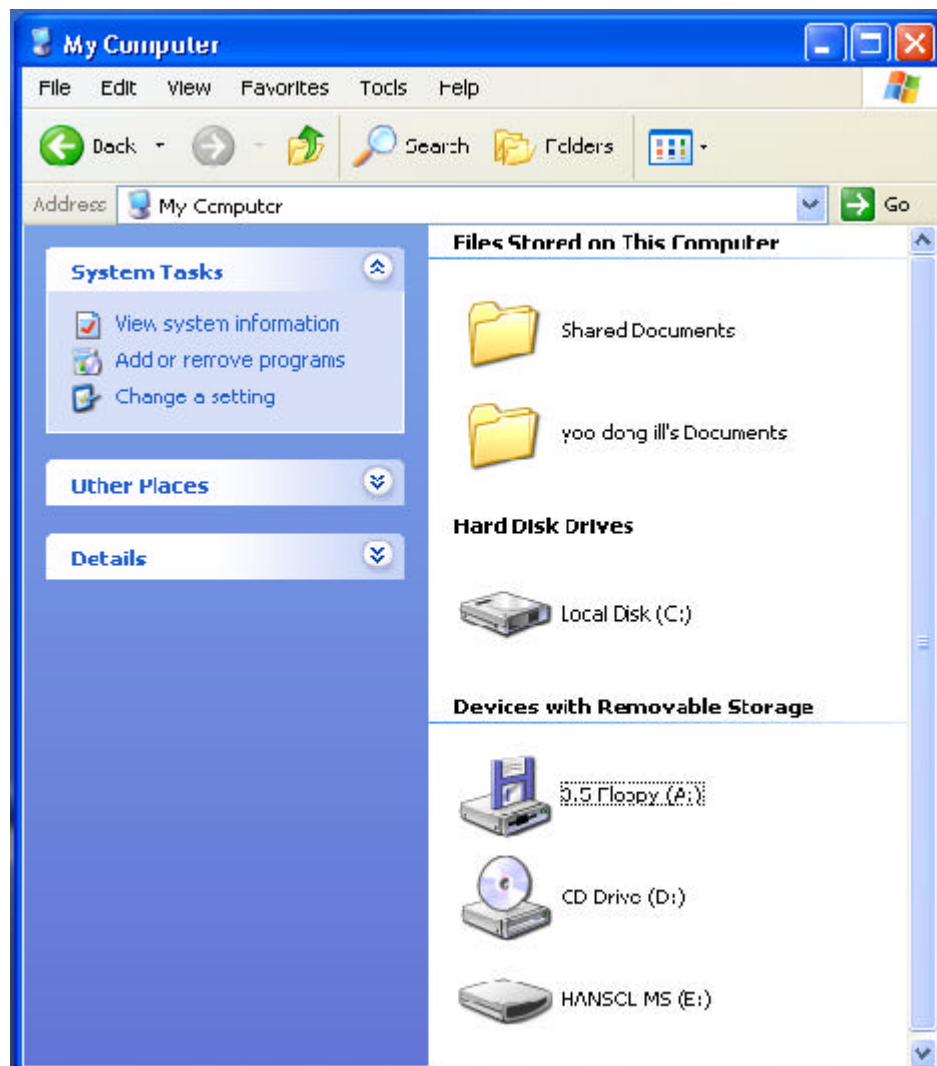


Hansolms Uninstall



Exit

Accessing a Flash Memory Driver



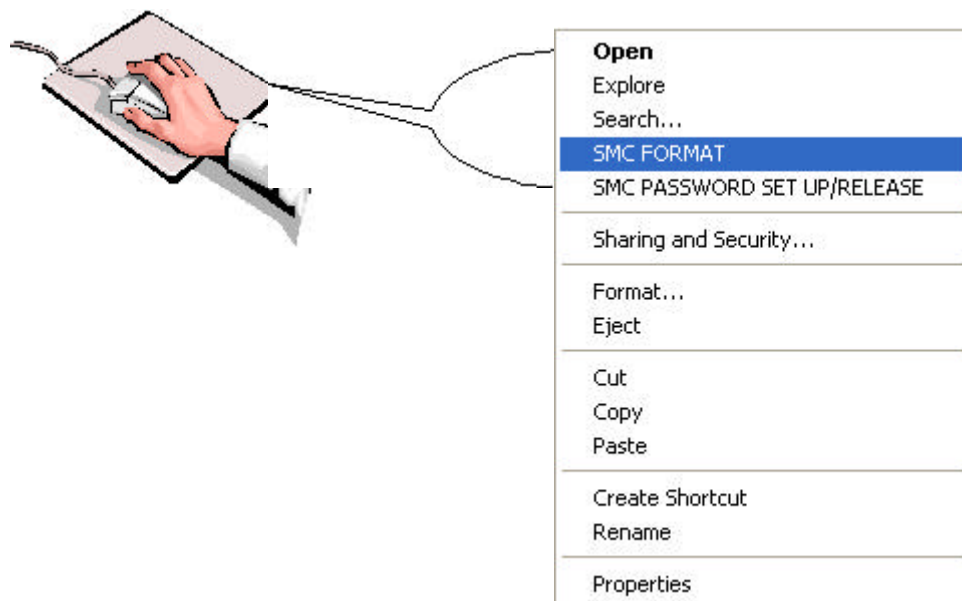
Insert Flash Memory Driver in your PC

With a PC compatible computer, running Windows (98, 2000, or ME), an icon will appear under "My Computer" as a "Removable Disk or HANSOL MS".

[Removable Disk] Click right button in mouse created pop-up menu

You able to SSFDC format and Protect function in pop-up menu

WARNING: Be careful not to remove the SmartMedia card in the Green led(Activity Mode).
--> Possible data damage.



SSFDC Format

SSFDC(Solid State Floppy Disk Card) format is private use of SMC and access speed better than PC format.

SMC able to Networking with all digital devices support SSFDC format. If you have a SMC than you involve digital devices.

USE a case

When SMC of internal dose trouble.

If you want use SMC in SSFDC support Digital Devices.

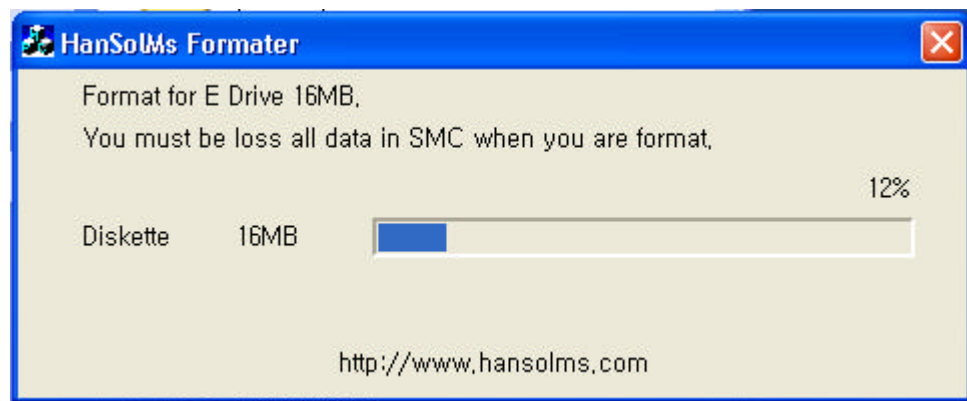
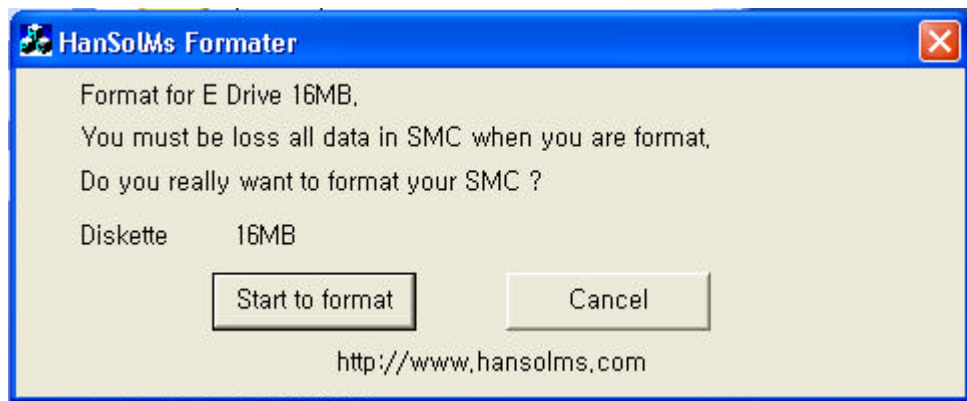
WARNING

You must be loss all data in SMC when you are formatting.

Don't remove SMC in SSFDC formatng.

window 98.ME PC format (FAT32)

window NT.XP PC format (NTFS) SMC format (Recommendation.)



FLASH MEMORY DRIVER pass code enter

Protect Function

Protect storage data through create password.

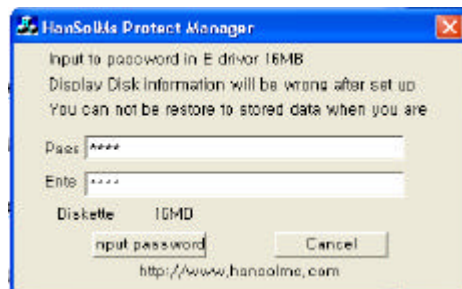
If you didn't enter password then you never open file.

pass code enter

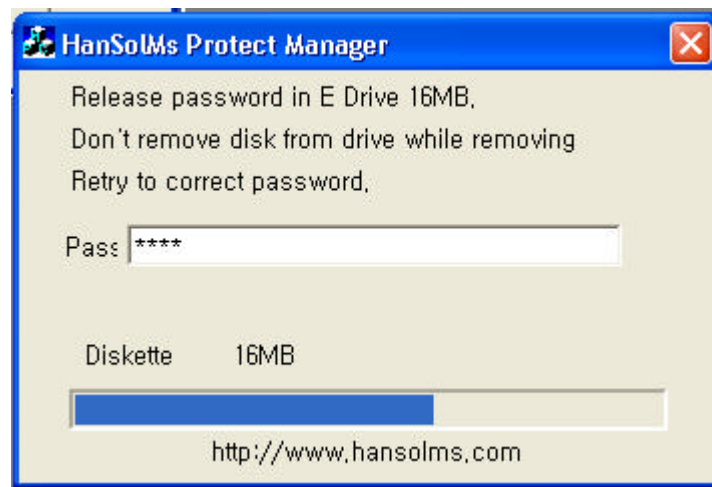
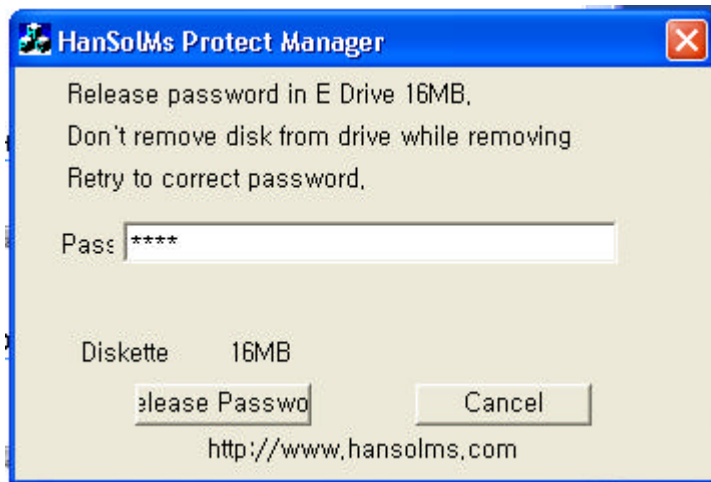
You can to enter up to 50code include alphabet, number.

WARNING

You can not be restore to stored data when you are forget password.



FLASH MEMORY DRIVER pass code delet



Flash Memory Driver example

