



GoSpeak! ProTM

Ultra-Portable PA System



VP3320

VP3420

VP3520



REV. B







Introduction

Congratulations on your purchase of the GoSpeak! Pro Ultra-Portable PA System. This innovative public address system weighs less than 5 pounds and carries in a laptop tote-bag (included). Set-up and break down of the GoSpeak! Pro takes just minutes.

If you've purchased the GoSpeak! Pro with Wireless Microphone (model VP3420) it includes a wireless lapel microphone. The GoSpeak Pro with Wireless Microphone (model VP3530) includes a handheld wireless microphone. Both models feature an integrated microphone receiver.

Additional GoSpeak! Pro Wireless Microphones may be purchased (Lapel VP3421 and Handheld VP3521) for use with either model.

The GoSpeak! Pro (model #VP3320) cannot be used with additional GoSpeak Wireless Microphones, but is compatible with third-party wireless microphone systems such as the Audio-Technica PRO 88W-830.





Package Contents

| GoSpeak! Pro Model No. | VP3320 | VP3420 | VP3520 |
|--|--------|--------|--------|
| GoSpeak! Pro speaker | ✓ | ✓ | ✓ |
| integrated wireless microphone receiver | | ✓ | ✓ |
| Wireless Lapel Microphone | | ✓ | |
| Wireless Handheld Microphone | | | ✓ |
| Power cable | ✓ | ✓ | ✓ |
| Carrying case | ✓ | ✓ | ✓ |
| User's Guide | ✓ | ✓ | ✓ |

Page 2



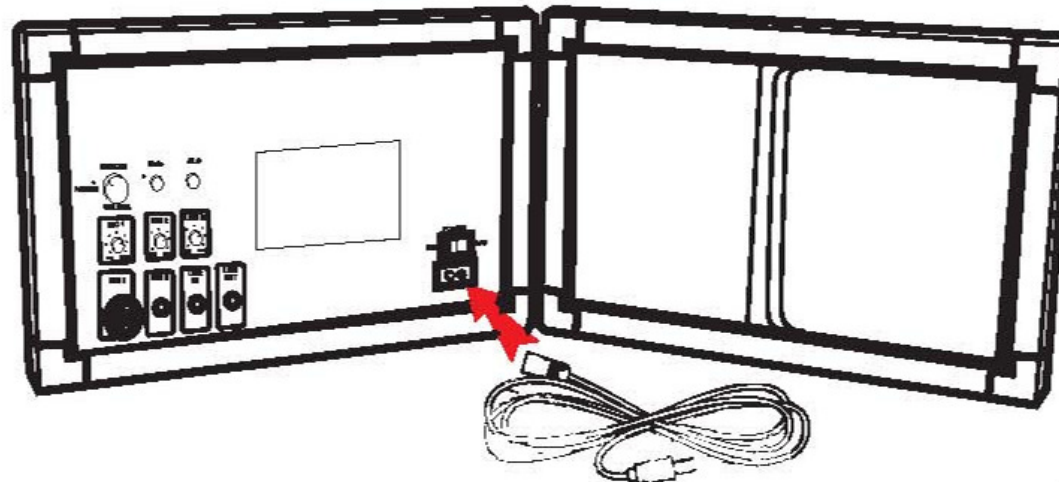


Setting up GoSpeak! Pro

Setting up your GoSpeak! Pro takes just minutes. Follow the steps below:

1. Unfold the GoSpeak! Pro speaker.
2. Plug the AC power cord into your GoSpeak! Pro, and then into the a 110-120v AC wall outlet.
3. Turn the Master Volume control on your GoSpeak! Pro all the way counterclockwise (sound off).

Note: avoid turning on your GoSpeak! Pro speaker until you have connected your microphone.



Page 3





The GoSpeak! Pro Control Panel

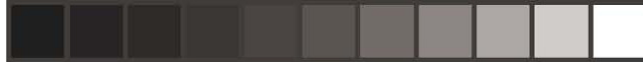
Your GoSpeak! Pro control panel is located in the upper left quadrant of the left speaker (as shown). Components and controls include:





1. Wireless microphone antenna and A/B microphone channel selector (models VP3420 and VP3520 only)
2. Power light LED indicator
3. Master Volume control
4. Speaker MUTE switch with LED indicator
5. An ALC (automatic limiter control) switch
6. MIC 1 input volume control
7. MIC 2 input volume control
8. Line IN input volume control
9. MIC 1 input (combination XLR and 1/4" microphone jack)
10. MIC 2 input (1/8" microphone jack)
11. LINE IN input (1/8" stereo input from computer, CD player, etc., or to receive signal from another GoSpeak! Pro speaker.
12. LINE OUT (1/8" jack to send signal to a recorder or a second GoSpeak! Pro speaker.





Connecting Your Corded Microphone

Your GoSpeak! Pro Speaker has four input/output ports: MIC 1, MIC 2, LINE IN, LINE OUT.

1. Connect your corded microphone into either MIC 1 or MIC 2 inputs and turn the microphone off.

MIC 1 (using with XLR or ¼" phone plug connector).

MIC 2 (using 1/8" phone plug connector).



2. Switch your microphone to the "on" position.

3. Turn on your GoSpeak! Pro Speaker and adjust microphone input volume.



Note: LINE IN is for connecting music or other input sources including additional GoSpeak! Pro speakers. The LINE OUT port is an output source for headphones, voice recorder or to send to additional GoSpeak! Pro speakers.





Connecting Multiple GoSpeak! Pro's

To coconnect multiple GoSpeak! Pro speakers, simply plug in a 1/8" (3.5mm) audio cable into the LINE OUT jack on the first GoSpeak! and the other end into the LINE IN jack on the second GoSpeak! Pro as shown below:



Input and Speaker Volume Controls

Your GoSpeak! Pro speaker comes with several controls to facilitate adjusting signal input from your microphone or from other music sources. Additionally, the speaker has a MASTER Volume control, a speaker MUTE switch and an ALC (Auto Limiter Control) switch.

The Auto Limiter Control (ALC) function helps eliminate distortion caused by microphone over-modulation.





Connecting Your Handheld Wireless Microphone



Your GoSpeak! wireless handheld microphone is already paired electronically with your GoSpeak! Pro speaker. To enable the microphone, follow the six steps below:

1. Install the two AA batteries (included) in your handheld microphone.
2. Turn your GoSpeak! Pro speaker Master Volume control all the way counterclockwise (sound off).
3. Turn on your GoSpeak! Pro Speaker.
4. Turn on your wireless microphone using the Power Button on the microphone.
- 5.* Match the A or B microphone channel to the GoSpeak! Pro channel.
6. Slowly increase the Master Volume on your GoSpeak! Pro until the correct microphone volume is established.

*GoSpeak! Pro can only connect to one wireless mic at a time.

Page 8





Microphone Controls and LED Status Indicator

Your GoSpeak! Pro Handheld Microphone has three control buttons and an LED status indicator. See detail descriptions below.



Channel A/B Switch Button

Unassigned Button (for future development)

Power ON/OFF Button

1. Power Button (left button).

- Toggles power ON and OFF. When power is turned ON, the LED indicator will flash red and blue for 6 seconds and then, begin flashing BLUE when mic is on Channel A, or GREEN when mic is on channel B.
- The LED indicator will be dark when power is OFF.

2. Channel Select Button (right button)

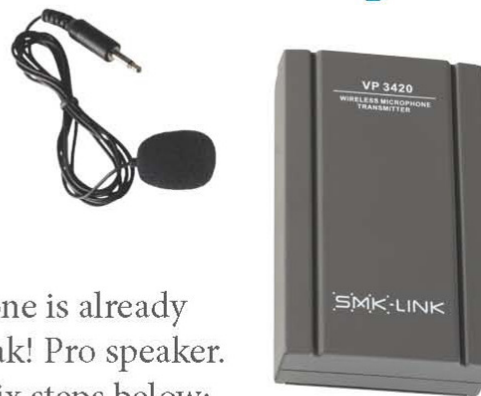
- Pressing the Channel Select Button will switch the microphone's wireless channel between channels A and B.
- Each time this button is pressed, the LED indicator will flash red and blue for 6 seconds; and then, begin flashing BLUE when mic Channel A is selected, or GREEN when channel B is selected.

Note: the middle button on the GoSpeak! Pro Handheld Microphone, included for future development, is currently unassigned.





Connecting Your Lapel Wireless Microphone



Your GoSpeak! wireless lapel microphone is already paired electronically with your GoSpeak! Pro speaker. To enable the microphone, follow the six steps below:

1. Install the AA batteries (included) in your lapel microphone transmitter box.
2. Turn your GoSpeak! Pro speaker Master Volume control all the way counterclockwise (sound off).
3. Plug your lapel microphone into your transmitter box and turn the box on.
4. Turn on your GoSpeak! Pro Speaker.
- 5.*Match the A or B microphone channel to the GoSpeak! Pro channel.
6. Slowly increase the Master Volume on your GoSpeak! Pro until the correct microphone volume is established.

*GoSpeak! Pro can only connect to one wireless mic at a time.





Warranty

SMK-Link Electronics Corporation (SMK-Link) warrants to the original end-user purchaser of the Product (“you”) that the Product, excluding batteries, will be free from defects in materials and workmanship under normal use and service for one-year from date of purchase. If the product becomes defective in materials or workmanship during the warranty period, SMK-Link will, at its option, either repair or replace it. The replacement unit may be a more current or upgraded model if the originally purchased model is not available.

Any Product repaired or replaced under the terms of the warranty is covered for the remainder of the original warranty period or ninety (90) days from the date of return shipment, whichever is longer. This warranty does not cover products which have been subjected to misuse, accident, physical damage, improper installation, abnormal operation or handling, neglect, inundation or fire or when product regulator label has been removed, altered or rendered illegible; nor does it cover accessory or consumable items.

SMK-Link shall not be liable for any indirect special, incidental, or consequential damages. SMK-Link's total liability for damages for any cause related to, or arising out of, the use or inability to use the product shall not exceed the original price paid for the product even if SMK-Link has been informed of such possibility.

If your product requires service under warranty, you must first contact SMK-Link product support to receive an RMA number. Shipping of defective units back to SMK-Link is at your expense. The contact information can be found on the SMK-Link website: www.smklink.com.

This warranty does not affect your statutory rights and you may have other rights which vary from state to state and country to country. This warranty is understood to be the complete and exclusive agreement between the parties, superseding all prior agreements, oral or written, and all other communications between the parties relating to the matter of this warranty.

The above warranty does not apply to products sold in Australia. Products sold in Australia by an authorized reseller will contain an Australia specific warranty statement.





Regulatory Compliance

FCC Certification

This device complies with Part 15 of the FCC Rules / Industrie Canada licence-exempt RSS standard(s). Operation is subject to the following two conditions: (1) this device may not cause harmful interference, and (2) this device must accept any interference received, including interference that may cause undesired operation.

Le présent appareil est conforme aux CNR d'Industrie Canada applicables aux appareils radio exempts de licence. L'exploitation est autorisée aux deux conditions suivantes : (1) l'appareil ne doit pas produire de brouillage, et (2) l'utilisateur de l'appareil doit accepter tout brouillage radioélectrique subi, même si le brouillage est susceptible d'en compromettre le fonctionnement. Changes or modifications not expressly approved by the party responsible for compliance could void the user's authority to operate the equipment.

This equipment has been tested and found to comply with the limits for a Class B digital device, pursuant to part 15 of the FCC Rules. These limits are designed to provide reasonable protection against harmful interference in a residential installation. This equipment generates uses and can radiate radio frequency energy and, if not installed and used in accordance with the instructions, may cause harmful interference to radio communications. However, there is no guarantee that interference will not occur in a particular installation. If this equipment does cause harmful interference to radio or television reception, which can be determined by turning the equipment off and on, the user is encouraged to try to correct the interference by one or more of the following:

- Reorient or relocate the receiving antenna.
- Increase the separation between the equipment and receiver.
- Connect the equipment into an outlet on a circuit different from that to which the receiver is connected. Consult a dealer or experienced radio/TV technician for help.





MPE Requirements

To satisfy FCC / IC RF exposure requirements, a separation distance of 20 cm or more should be maintained between the antenna of this device and persons during device operation. To ensure compliance, operations at closer than this distance is not recommended.

Les antennes installées doivent être situées de façon à ce que la population ne puisse y être exposée à une distance de moins de 20 cm. Installer les antennes de façon à ce que le personnel ne puisse approcher à 20 cm ou moins de la position centrale de l'antenne.

La FCC des États-Unis stipule que cet appareil doit être en tout temps éloigné d'au moins 20 cm des personnes pendant son fonctionnement.

Region Section

Limited by local law regulations, version for North America does not have region selection option.

Under Industry Canada regulations, this radio transmitter may only operate using an antenna of a type and maximum (or lesser) gain approved for the transmitter by Industry Canada. To reduce potential radio interference to other users, the antenna type and its gain should be so chosen that the equivalent isotropically radiated power (e.i.r.p.) is not more than that necessary for successful communication.

Conformément à la réglementation d'Industrie Canada, le présent émetteur radio peut fonctionner avec une antenne d'un type et d'un gain maximal (ou inférieur) approuvé pour l'émetteur par Industrie Canada. Dans le but de réduire les risques de brouillage radioélectrique à l'intention des autres utilisateurs, il faut choisir le type d'antenne et son gain de sorte que la puissance isotrope rayonnée équivalente (p.i.r.e.) ne dépasse pas l'intensité nécessaire à l'établissement d'une communication satisfaisante.





CE Declaration of Conformity

Manufacturer:

SMK-Link Electronics Corporation

3601-B Calle Tecate

Camarillo, CA 93012

This equipment has been tested and found to comply with the limits of the European Council Directive 1999/5/EC.

A complete Declaration of Conformity can be found at www.smklink.com





Thank You

Thank you for your purchase of the GoSpeak! Pro Ultra Portable PA System and for choosing SMK-Link Electronics to meet your presentation needs. We look forward to serving you in the future.

To learn about new SMK-Link products as they become available, and to ensure the best possible customer support, please register your product online at www.smklink.com/register.

Support

SMK-Link Electronics Corporation
3601-B Calle Tecate
Camarillo, CA 93012

TEL: (888) 696-3500
FAX: (805) 987-6665
Email: pcsupport@smkusa.com
www.smklink.com

©2014 SMK-Link Electronics Inc. SMK-Link, the SMK-Link logo and GoSpeak! are trademarks or registered trademarks of SMK-Link Electronics, Inc. All other trademarks are properties of their respective owners. Made in China.







