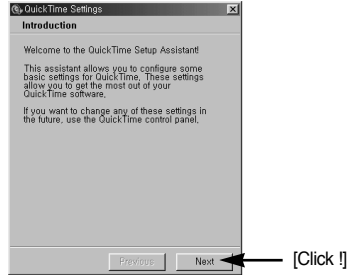


# Setting up the application software

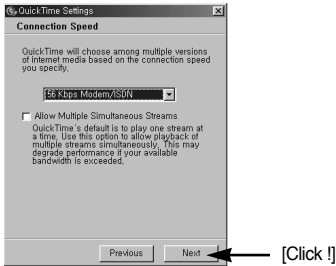
※ The QuickTime program folder will appear. Click on the Close button to close the folder.



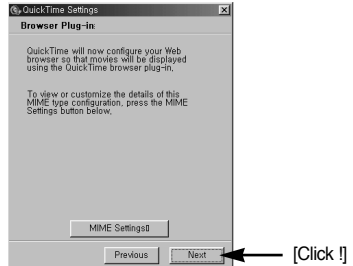
13. The QuickTime Settings – Introduction window appears. Click [Next >].



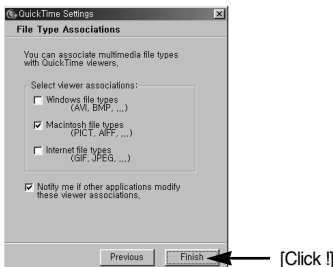
14. Set the transfer rate for downloading content from the Internet, and then click [Next >].



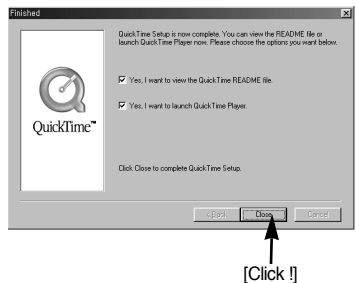
15. Set up your browser for QuickTime plug-in. Click [Next >].



16. Specify the file types you want to associate with QuickTime. Click [Finish].

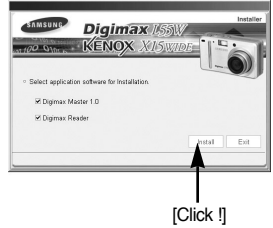
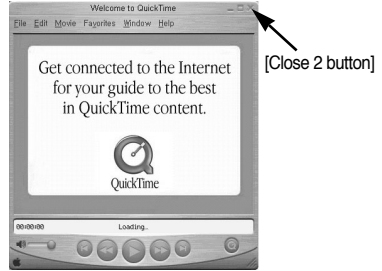
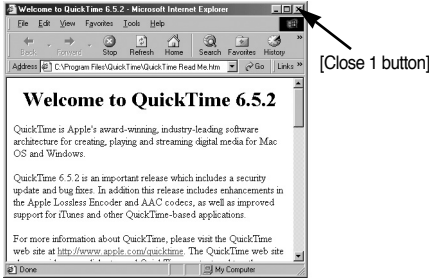


17. Installation is complete. Click [Close].



# Setting up the application software

\* The QuickTime Player will launch, the readme file will open, and the Step 18 window will open. Click on the Close 1 and Close 2 buttons to exit the program.



## INFORMATION

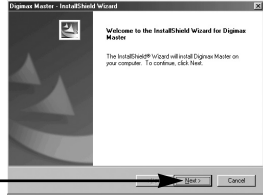
- If you select [Exit] at step 18, the application program installation will be cancelled.

19. The Digimax Master installation window will be displayed as shown alongside. Click the [Next >] button.



# Setting up the application software

20. A window will open. Click the [Next >] button.



[Click !]

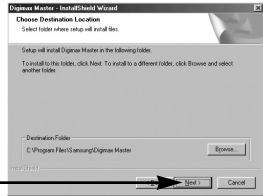
## INFORMATION

- If you select [Cancel] at step 20, a window for installing Digimax Reader will be displayed.

21. A destination selection window will open.

Click [Next >].

To copy the files to another folder, click [Browse...] and choose a folder you want.



[Click !]

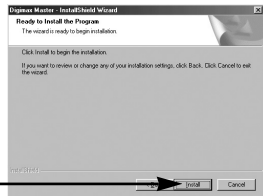
22. A window will open, asking you to choose a folder to which program icons will be added.

Click [Next >] button. If you want to choose another folder, click [Browse...] and choose a folder you want.



[Click !]

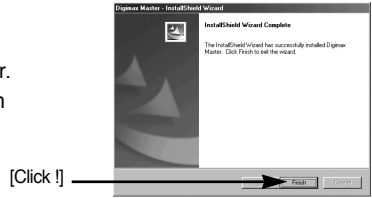
23. Click [Install] button and Digimax Master starts installing.



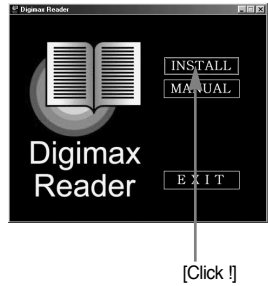
[Click !]

# Setting up the application software

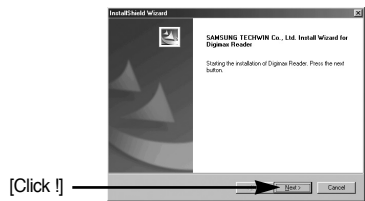
24. Digimax Master installation is successfully completed.  
Click the [Finish] button to install Digimax Reader.  
\* The screen shot of step 24 can be different from the illustration depending on the system requirements.



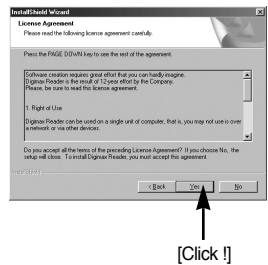
25. A window will be displayed as shown alongside.  
Click the [INSTALL] button.  
- If you click the [MANUAL] button instructions, instructions for using Digimax reader will be displayed.  
- Click the [EXIT] button and the Digimax reader installation will be cancelled and a window for restarting the computer will appear.



26. A window will open. Click the [Next >] button.



27. The Software License Agreement window will be displayed. If you agree to this, click [Yes], the window will then move to the next step.  
If you disagree, click [No] and the installation program will be cancelled.

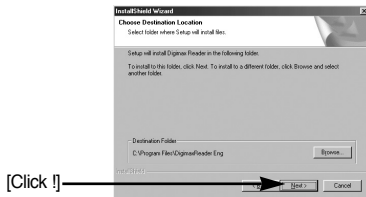


# Setting up the application software

28. A destination selection window will open.

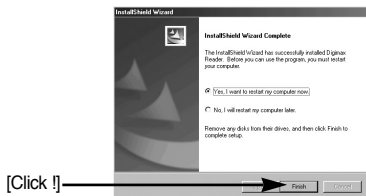
Click the [Next >] button.

To copy the files to another folder, click [Browse...] and choose a folder you want.



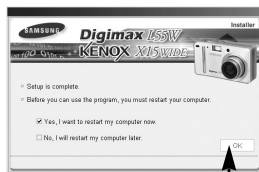
29. Digimax Reader Installation is completed.

The system will not reboot even if the [Yes, I want to restart the computer now] option is selected.



30. To apply changes, you must restart the computer.

Select [Yes, I want to restart my computer now], and then click the [OK] button.



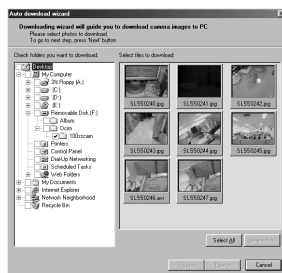
31. After restarting the computer, connect the PC to the camera with the USB cable.

32. Turn the camera power on.

The [Found New Hardware Wizard] will open and the computer will recognise the camera.

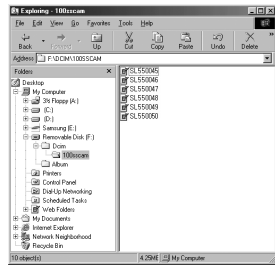
\* If your OS is Windows XP, an image viewer program will open.

If the download window of Digimax Master opens after starting Digimax Master, the camera driver was setup successfully.



# Setting up the application software

33. If you can see [Removable Disk] under [My computer], the camera driver installation was successful. Now you can transfer image files from the camera to PC via the USB cable.



## INFORMATION

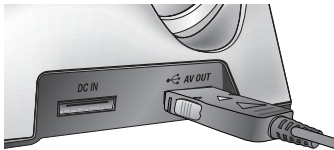
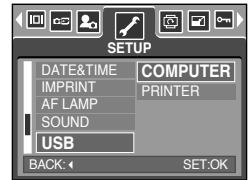
- If you have installed the camera driver, The [Found New Hardware Wizard] may not open.
- On a Windows 98 or 98 SE system, the Found New Hardware Wizard dialog box opens and a window asking you to select a driver file may appear. In this case, specify "USB Driver" in the CD supplied. (for Windows 98 and 98 SE).
- Before connecting the camera to the PC, You should first install the camera driver.
- After installing the camera driver, you have to restart your PC.
- If you connect the camera to the PC before installing the camera driver, the [Found New Hardware Wizard] will open.  
In this case, cancel the [Found New Hardware Wizard] and disconnect the camera. Install the camera driver and connect the camera to the PC again.
- Should the computer not find the camera driver after installation, please try one or more of the following measures.
  1. Delete the camera driver (p.130), and re-install the driver.
  2. Refer to FAQ (p.142) to check for a possible solution to the problem.
  3. If your PC's central processing unit is VIA chip (This is shown in the USB Host Controller), download the patch file from the Samsung Camera web page. (<http://www.samsungcamera.com>)

# Starting PC mode

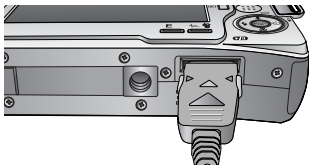
- If you connect the USB cable to a USB port on your PC and then turn on the power, the camera will automatically switch to "computer connection mode".
- In this mode, you can download stored images to your PC through the USB cable.
- The LCD monitor is always turned off in PC mode.
- The camera status lamp will blink when the files are transferring via the USB connection.

## ■ Connecting the camera to a PC

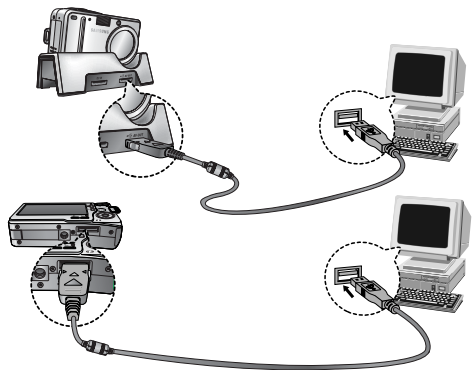
1. In any mode with the exception of Voice Recording mode, press the Menu button.
2. Press the LEFT/ RIGHT button and select the [SETUP] menu tab.
3. Select the [USB] menu by pressing the UP/ DOWN button and press the RIGHT button.
4. Use the UP and DOWN buttons to select [COMPUTER], and then press the OK button.



[Using the USB cable with Cradle]



[Using the USB cable with Camera]



- ※ If you selected [PRINTER] in Step 4, when you connect the camera to your printer, the [CONNECTING PRINTER] message will display and the connection will not be established. In this case, disconnect the USB cable, and then follow the procedure from Step 2 and onward.

# Starting PC mode

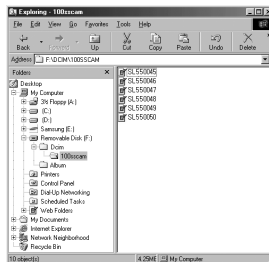
## ■ Downloading stored images

You can download the still images stored on the camera to your PC's hard disk and print them or use a photo editing software to edit them.

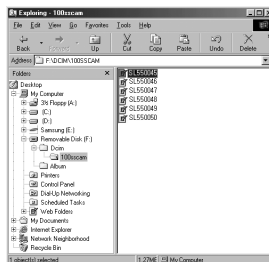
1. Connect the camera to your PC with the USB cable.

2. On your computer's desktop display, select [My computer] and double click [Removable Disk → DCIM → 100SSCAM].

The image files will then be displayed.



3. Select an image and press the right mouse button.



4. A pop-up menu will open.

Click the [Cut] or [Copy] menu.

- [Cut] : cuts a selected file.

- [Copy] : copies files.

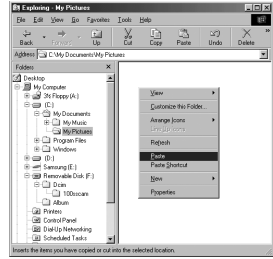


5. Click a folder where you want to paste the file.

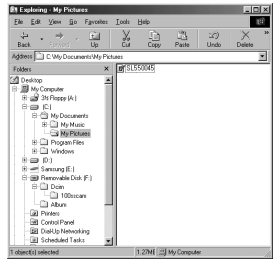


# Starting PC mode

6. Press the right mouse button and a pop-up menu will open. Click [Paste].



7. An image file is transferred from the camera to your PC.

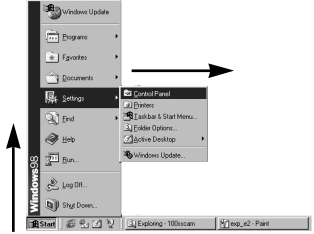


- By using [Digimax Master], you can see the stored images in the memory directly on the PC monitor and you can copy or move the image files.

# Removing the USB Driver for Windows 98SE

■ To remove the USB driver, refer to the process shown below.

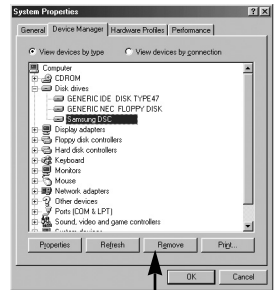
1. Click [Start → Settings] and click [Control Panel].



2. Double-click [System].



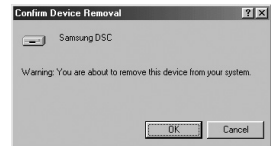
3. Select [Device manager → Hard Disk Controller → Samsung DSC] and click the [Remove] button.



[Click !]

4. Click the [OK] button.

The camera is removed from the system.

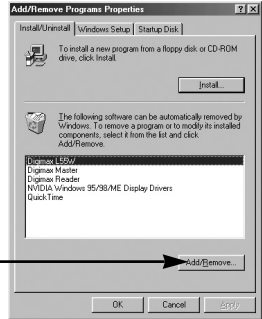


# Removing the USB Driver for Windows 98SE

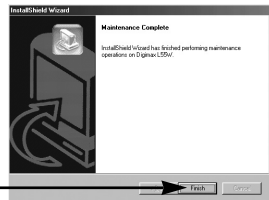
5. Click [Start → Settings → Control Panel] and double click [Add/Remove programs].



6. The [Add/Remove Programs Properties] window will open. Click [Digimax L55W] and click the [Add/Remove] button.



7. Uninstallation is complete. Click the [Finish] button and the window will disappear.



# Removable Disk

- To use this camera as a Removable Disk, install (p.118) the USB Driver.
  1. Before turning the camera power on, connect the camera to the PC with the USB cable.
  2. Click [Removable Disk] under [My computer] or [Windows Explorer].
  3. Image files stored in the Removable Disk (DCIM → 100SSCAM) can be transferred to the PC.

## INFORMATION

### Important information whilst using the Removable Disk

- The [Removable Disk] indicator will not show when the camera power is off or the USB cable is removed.
- We recommend that you should copy the images to the PC to view them. Opening images directly from the removable disk may be subject to unexpected disconnection.
- When uploading images from the PC to the camera, ensure that the uploaded file names are not the same as those already stored on the memory.
- When you upload a file that is not taken by this camera to the Removable Disk, the [FILE ERROR!] message will be displayed on the LCD monitor in the PLAY mode, and nothing is displayed in THUMBNAIL mode.
- The camera status lamp will blink, when a file is transferred (copy or deletion) between the PC and the camera. Do not remove the USB cable until the lamp stops blinking.

To remove the USB cable in Windows 2000/ME/XP, use the [Unplug or Eject Hardware] icon on the task bar.



# Removing the removable disk

## ■ Windows 98 / 98SE

1. Check whether the camera and PC are transferring a file.  
If the camera status lamp blinks, you have to wait until the lamp illuminates.
2. Unplug the USB cable.

## ■ Windows 2000 / ME / XP

(The illustrations may be different from the real display in accordance with the Windows O/S.)

1. Check whether the camera and PC are transferring a file.  
If the camera status lamp blinks, you have to wait until the lamp illuminates.
2. Double-click the [Unplug or Eject Hardware] icon on the task bar.



[Double-click!]

3. The [Unplug or Eject Hardware] window will open. Select the [USB Mass Storage Device] and click the [Stop] button.



4. The [Stop a Hardware device] window will open. Select the [USB Mass Storage Device] and click the [OK] button.



5. A [Safe to Remove Hardware] window will open. Click the [OK] button.



[Click !]

# Removing the removable disk

6. A [Unplug or Eject Hardware] window will open.  
Click the [Close] button and the removable disk will be removed safely.



7. Unplug the USB cable.

## Setting up the USB Driver for MAC

1. A USB Driver for MAC is not included with the software CD as MAC OS supports the camera driver.
2. Check the MAC OS. You can check the MAC OS version during MAC OS start-up.  
This camera is compatible with MAC OS 10.0 or later.
3. Connect the camera to the Macintosh and turn the camera power on.
4. A new icon will be displayed on the desktop after connecting the camera to the MAC.

## Using the USB Driver for MAC

1. Double click a new icon on the desktop and the folder in the memory will be displayed.
2. Select an image file and copy or move it to MAC.

### CAUTION

- For Mac OS 10.0 or later : First complete uploading from computer to camera and then remove the removable disk with the Extract command.

# Digimax Master

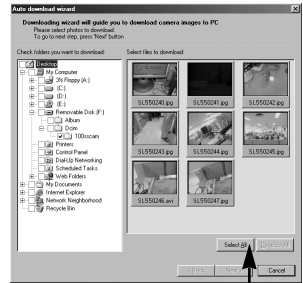
- You can download, view, edit and save your images and movies with this software. This software is only compatible with Windows except for the Windows 98.
- To start the program, click [Start → Programs → Samsung → Digimax Master].

## ● Downloading images

1. Connect the camera to your PC.

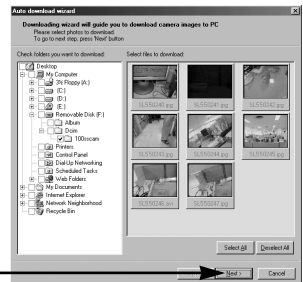
2. A window for downloading images will display after connecting the camera and your PC.

- To download the captured images, select the [Select All(A)] button.
- Select desired folder in the window and click the [Select All(A)] button. You can save captured images and selected folder.
- If you click the [Cancel] button, downloading will be cancelled.



[Click !]

3. Click [Next(N) >] button.



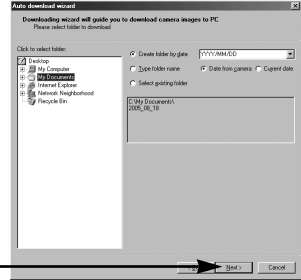
[Click !]

# Digimax Master

4. Select a destination and make a folder to save downloaded images and folders.
  - Folder names can be made in order of date and images will be downloaded.
  - Folder name will be made as you want and images will be downloaded.
  - After selecting a folder that was made before, images will be downloaded.

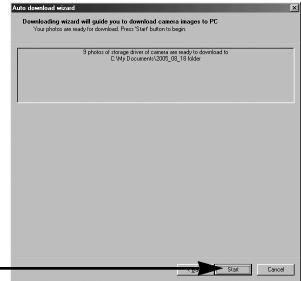
5. Click [Next(N) >] button.

[Click !]

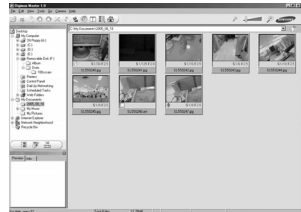


6. A window will open as shown alongside.  
The destination of the selected folder will be displayed on the upper side of the window.  
Click the [Start] button to download the images.

[Click !]



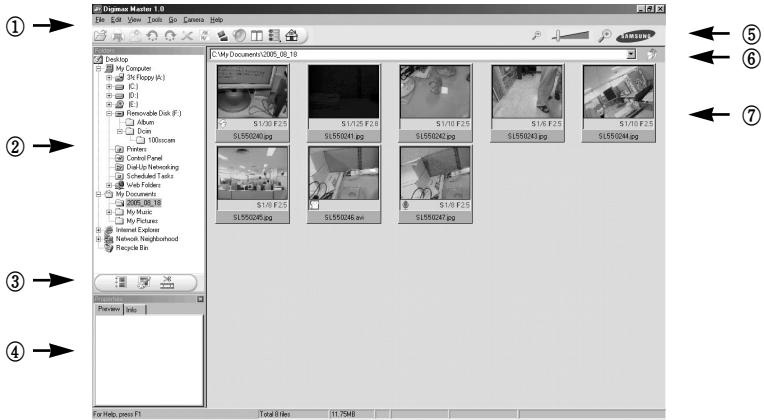
7. Downloaded images will be displayed.





# Digimax Master

- Image viewer : You can view the stored images.



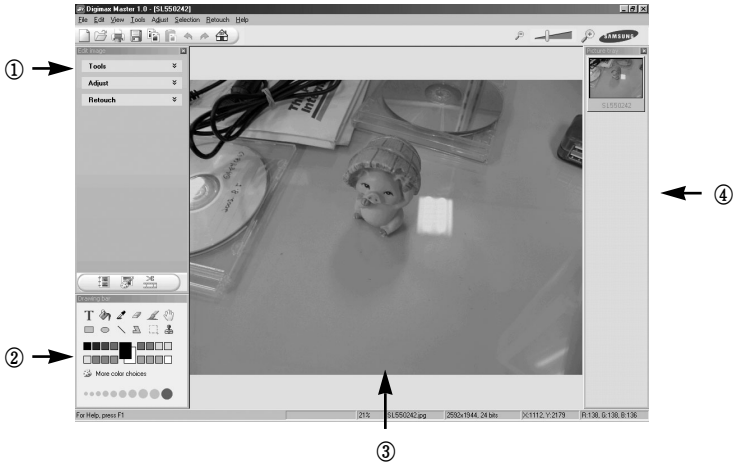
- Image viewer functions are listed below.

- ① Menu bar : You can select menus.  
File, Edit, View, Tools, Change functions, Auto download, help, etc.
- ② Image selection window : You can select the desired images in this window.
- ③ Media type selection menu : You can select image viewer, image edit and movie edit functions in this menu.
- ④ Preview window : You can preview a image or a movie clip and check the multi media information.
- ⑤ Zoom bar : You can change preview size.
- ⑥ Folder display window : You can see the folder location of the selected image.
- ⑦ Image display window : Images of the selected folder are displayed.

※ Refer to the [Help] menu in Digimax Master for further information.

# Digimax Master

- Image edit : You can edit the still image.



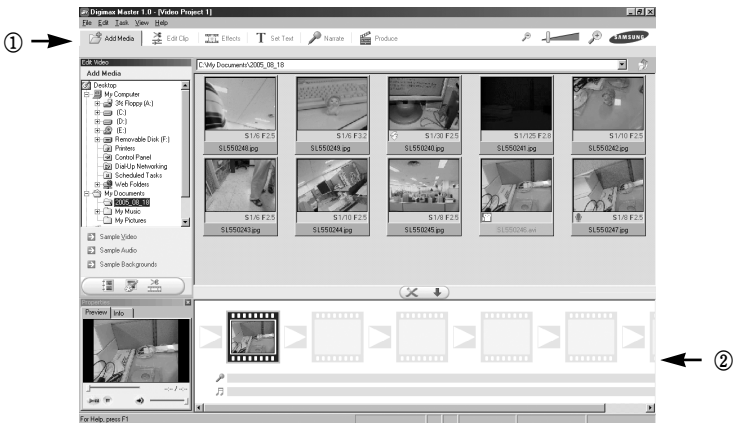
- Image edit functions are listed below.

- ① Edit menu : You can select the following menus.
  - [Tools] : You can resize or crop the selected image. See the [Help] menu.
  - [Adjust] : You can modify image quality. See the [Help] menu.
  - [Retouch] : You can change image or insert effects on the image. See the [Help] menu.
- ② Drawing tools : Tools for editing an image.
- ③ Image display window : a selected image displays in this window.
- ④ Preview window : You can preview the changed image.

- ※ A still image edited with Digimax Master can't be played back on the camera.
- ※ Refer to the [Help] menu in Digimax Master for further information.

# Digimax Master

- **Movie edit** : You can get the still image, movie clip, narration, music files together in a movie clip.



- Movie clip edit functions are listed below.

- ① **Edit menu** : You can select the following menus.

[Add Media] : You can add other media elements to a movie.

[Edit Clip] : You can change the brightness, contrast, colour and saturation.

[Effects] : You can insert an effect.

[Set Text] : You can insert texts.

[Narrate] : You can insert a narration.

[Produce] : You can save the edited multi media as a new file name.

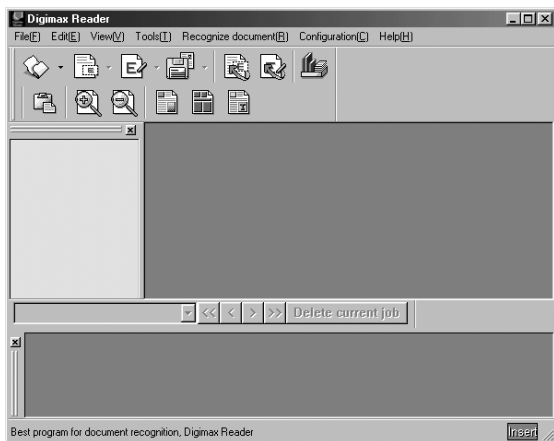
You can insert multi media in this window. You can select AVI, Windows media (wmv), Windows media (asf) and movie clip for this camera (AVI, MPEG-4) file types.

- ② **Frame display window** : You can insert multi media in this window.

- ※ Some movie clips that was compressed with a codec that is not compatible with the Digimax Master can't play back in the Digimax Master.
- ※ Refer to the [Help] menu in Digimax Master for further information.


# Digimax Reader

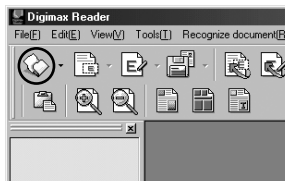
- Digimax Reader is a Text recognition program. You can save an image file that is captured in the Text mode, as a text file with this program.  
This software is only compatible with Windows.
- To start the program, click [Start → Programs → Digimax Reader Eng].  
The following screen will appear.



- How to use the Digimax Reader
  1. Connect the camera and the PC with a USB cable and download the images that were stored in the camera to the PC.  
\* Please see page 127~129 for details on Connecting a camera and PC, Downloading images.

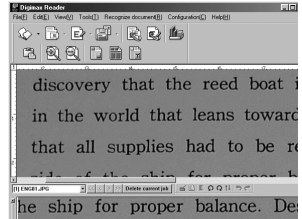
2. Run the Digimax Reader.

3. Click the Open (  ) icon as shown alongside.

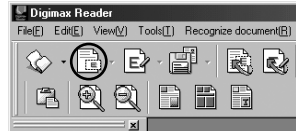


# Digimax Reader

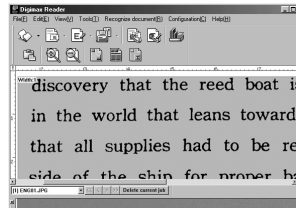
4. Select the image you want to save as a text file.  
\* Only an image that was taken with a SAMSUNG camera can be opened.




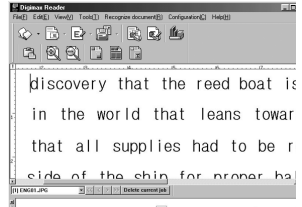
5. Click the Area Analysis (  ) icon to scan the image.




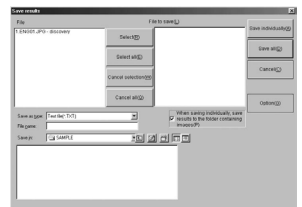
6. Part of the image you selected will be displayed as shown.



7. Click the Character Recognition (  ) icon. The part selected in the previous step will be recognized as text.



8. To save the section as a text, click the Save (  ) icon. A window as shown alongside will be displayed.



# Digimax Reader

9. Select the file type that you want.

Selectable file types : \*.TXT, \*.HWP, \*.DOC, \*.RTF

## INFORMATION

- To get an image that can be recognized as a text :
  - Keep a distance that you can capture the image clearly between the subject and the camera.
  - The subject need to be centered.
  - Avoid camera shake to get a good image.
- Refer to the [Help] menu in Digimax Reader for further information.

## FAQ

- Please check the following if the USB connection malfunctions.

[Case 1]      The camera power is off.  
→ Turn the camera power on.

[Case 2]      USB Driver is not installed correctly.  
→ Install the USB Driver correctly. Refer to page 118.

[Case 3]      The USB cable is not connected or you are using a cable with an incorrect specification.  
→ Use a USB cable with the correct specification.

[Case 4]      The camera is not recognized by your PC.  
Sometimes, the camera may appear under [Unknown Devices] in Device Manager.  
→ Install the camera driver correctly.  
Turn off the camera, remove the USB cable, plug in the USB cable again, and then turn on the camera.

## Case 5]

- There is an unexpected error during file transfer
- Turn the camera power off and on again. Transfer the file again.

## [Case 6]

- How do I know my computer supports a USB Interface?
- Check the USB port in your computer or keyboard.
  - Check the OS version. A USB Interface is available in Windows 98, 98SE, 2000, ME, XP.
  - Check [Universal Serial Bus controllers] in Device Manager. Do the following to checks [Universal Serial Bus controllers].
    - Win 98/ME : Follow [Start → Settings → Control Panel → System → Device Manager → Universal Serial Bus controllers].
    - Win 2000 : Follow [Start → Settings → Control Panel → System → Hardware → Device Manager → Universal Serial Bus controllers].
    - Win XP : Follow [Start → Control Panel → Performance and Maintenance → System → Hardware → Device Manager → Universal Serial Bus controllers].

There must be USB Host Controller and USB root hub under [Universal Serial Bus controllers].

In addition, double-click on the USB Universal Host Controller and the USB Root Hub to check if the Device Status states "This device is working properly". If the Device Status says the device is "not working properly", click the "Driver" tab and then click [Update Driver] or [Reinstall Driver].

- When all the conditions mentioned above are met, the computer can support the USB interface.

## [Case 7]

- When using the USB hub.
- There may be a problem in connecting the camera to the PC through the USB hub if the PC and the hub are not compatible. Wherever possible, connect the camera to the PC directly.

## [Case 8]

- Are other USB cables connected to the PC?
- The camera may malfunction when it is connected to the PC at the same time as another USB cable. In this case, disconnect the other USB cable, and connect only one USB cable to the camera.

# FAQ

[Case 9]

When I open the Device Manager (by clicking Start → (Settings) → Control Panel → (Performance and Maintenance) → System → (Hardware) → Device Manager), there are 「Unknown Devices」 or 「Other Devices」 entries with a yellow question mark (?) beside them or devices with an exclamation mark (!) beside them.

- Right-click on the entry with the question (?) or exclamation (!) mark and select "Remove". Restart the PC and connect the camera the again. For Windows 98 PC, remove the camera driver also, restart the PC, and then reinstall the camera driver.
- Double-click on the entry with the question (?) or exclamation (!) mark, click the "Driver" tab, and click [Update Driver] or [Reinstall Driver]. If a message appears asking you to specify the location of the appropriate device driver, specify "USB Driver" in the CD supplied.

[Case 10]

In some security programs (Norton Anti Virus, V3, etc.), the computer may not recognise the camera as a removable disk.

- Stop the security programs and connect the camera to the computer. Refer to the security program instructions about how to stop the program.

■ When the movie clip doesn't play back on the PC

※ When the movie clip recorded by the camera doesn't play back on the PC, the causes are mostly due to the codec installed on the PC.

● When the DirectX 9.0 or later is not installed

→ Install the DirectX 9.0 or later

1) Insert the CD provided with the camera

2) Run the windows explorer and select [CD-ROM drive:\USB Driver\DirectX 9.0] folder and click the DXSETUP.exe file. The DirectX will be installed. Visit the following site for downloading the DirectX. <http://www.microsoft.com/directx>



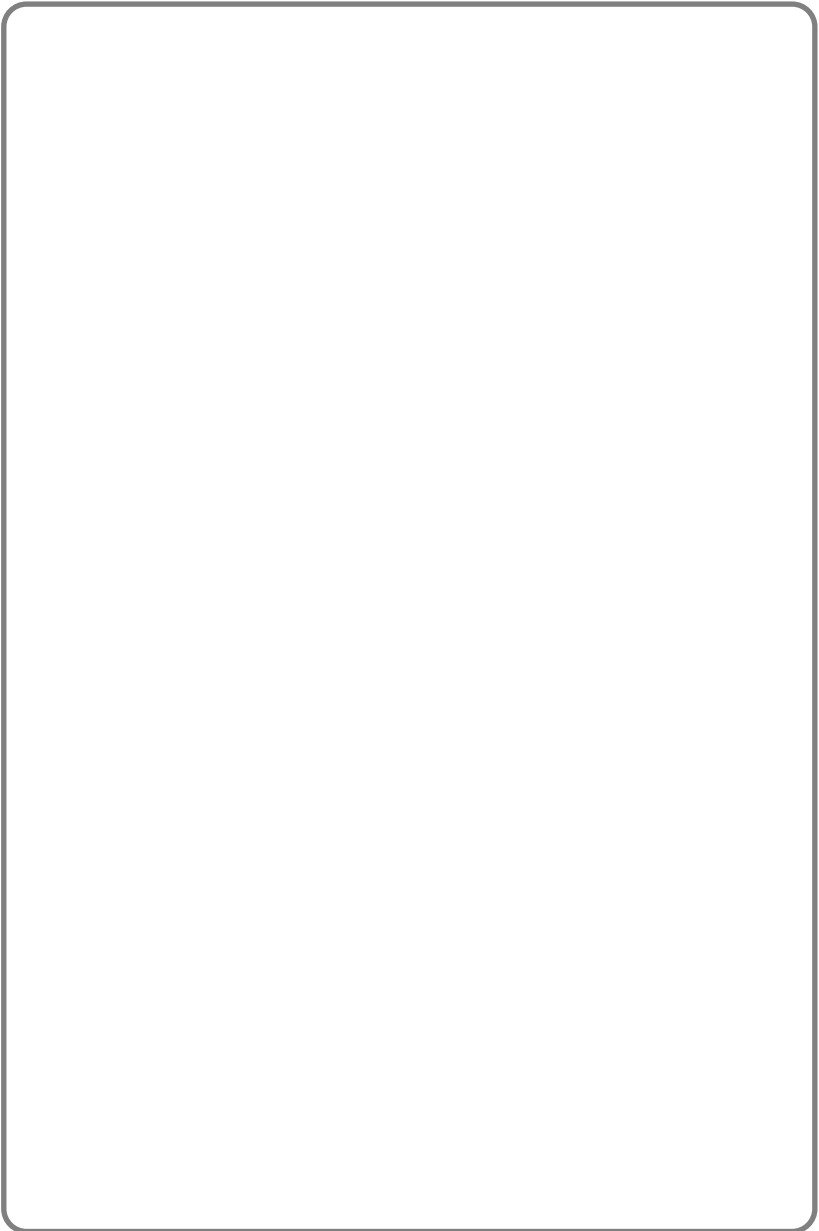
# FAQ

- If a PC (Windows 98) stops responding while the camera and PC are connected repeatedly
  - If a PC (Windows 98) is turned on for a long time and the camera is connected repeatedly the PC may not recognise the camera. In this case, re-start the PC.
  
- If a PC connected with the camera stops responding while Windows is starting.
  - In this case, disconnect the PC and the camera and Windows will start.  
If the problem happens continuously, set the Legacy USB Support to disable and re-start the PC. The Legacy USB Support is in the BIOS setup menu. (The BIOS setup menu differs from the PC manufacturers and some BIOS menus don't have Legacy USB Support) If you can't change the menu by yourself, contact to the PC manufacturer or BIOS manufacturer.
  
- If the movie clip can't be deleted, removable disk can't be extracted or an error message displays during the file transfer.
  - If you install only the Digimax Master, the problems mentioned above occasionally happen.
    - Close the Digimax Master, program by clicking the Digimax Viewer icon on the Taskbar.
    - Install all the application programs included in the software CD.

# MEMO

A large, empty rectangular box with rounded corners, intended for writing a memo. The box is white with a thin black border and occupies most of the page below the header.

# MEMO





# SAMSUNG

---

SAMSUNG TECHWIN CO., LTD.  
OPTICS & DIGITAL IMAGING DIVISION  
145-3, SANGDAEWON 1-DONG, JUNGWONGU,  
SUNGNAM-CITY, KYUNGKI-DO, KOREA  
462-121  
TEL : (82) 31-740-8086,8088, 8090, 8092, 8099  
FAX : (82) 31-740-8398, 8111  
[www.samsungcamera.com](http://www.samsungcamera.com)

SAMSUNG OPTO-ELECTRONICS AMERICA, INC.  
HEADQUARTERS  
40 SEAVIEW DRIVE, SECAUCUS, NJ07094, U.S.A.  
TEL : (1) 201-902-0347  
FAX : (1) 201-902-9342

WESTERN REGIONAL OFFICE  
18600 BROADWICK ST.,  
RANCHO DOMINGUEZ, CA 90220, U.S.A.  
TEL : (1) 310-900-5263/5264  
FAX : (1) 310-537-1566  
[www.samsungcamerausa.com](http://www.samsungcamerausa.com)

SAMSUNG OPTO-ELECTRONICS UK LIMITED  
SAMSUNG HOUSE  
1000 HILLSWOOD DRIVE  
HILLSWOOD BUSINESS PARK  
CHERTSEY KT16 OPS U.K.  
TEL : 00800 12263727  
(free for calls from UK only)  
UK Service Hotline : 01932455320  
[www.samsungcamera.co.uk](http://www.samsungcamera.co.uk)

SAMSUNG OPTO-ELECTRONICS GMBH  
AM KRONBERGER HANG 6  
D-65824 SCHWALBACH/TS., GERMANY  
TEL : 49 (0) 6196 66 53 03  
FAX : 49 (0) 6196 66 53 66  
[www.samsungcameras.de](http://www.samsungcameras.de)

SAMSUNG FRANCE S.A.S.  
BP 51 TOUR MAINE MONTPARNASSE  
33, AV. DU MAINE  
75755, PARIS CEDEX 15, FRANCE  
HOTLINE PHOTO NUMÉRIQUE :  
00 800 22 26 37 27 (Numéro Vert-Appel Gratuit)  
TEL : (33) 1-4279-2200  
FAX : (33) 1-4538-6858  
[www.samsungphoto.fr](http://www.samsungphoto.fr)

SAMSUNG TECHWIN MOSCOW OFFICE  
RUSSIA, 125167, MOSCOW LENNINGRADSKY,  
PR-KT, 37-A, KORP14  
TEL : (7) 095-258-9299/96/98  
FAX : (7) 095-258-9297  
<http://www.samsungcamera.ru>

TIANJIN SAMSUNG OPTO-ELECTRONICS CO.,LTD.  
7 PINGCHANG ROAD NANKAI DIST., TIANJIN  
P.R CHINA  
POST CODE:300190  
TEL : (86) 22-2761-4599  
FAX : (86) 22-2769-7558  
[www.samsungcamera.com.cn](http://www.samsungcamera.com.cn)

\* Internet address - <http://www.samsungcamera.com/>



The CE Mark is a Directive conformity mark of the European Community (EC)

6806-2930