

USB PC Camera *@eye pro*

Installation Guide

SAMSUNG AEROSPACE

FCC Compliance Statement

This device complies with part 15 of the FCC Rules. Operation is subject to the following two conditions: (1) This device may not cause harmful interference, and (2) this device must accept any interference received, including interference that may cause undesired operation.

Note: This equipment has been tested and found to comply with the limits for a Class B digital device, pursuant to part 15 of the FCC Rules. These limits are designed to provide reasonable protection against harmful interference in a residential installation. This equipment generates, uses and can radiate radio frequency energy and, if not installed and used in accordance with the instructions, may cause harmful interference to radio communications. However, there is no guarantee that interference will not occur in a particular installation. If this equipment does cause harmful interference to radio or television reception, which can be determined by turning the equipment off and on, the user is encouraged to try to correct the interference by one or more of the following measures:

- Reorient or relocate the receiving antenna.
- Increase the separation between the equipment and receiver.
- Connect the equipment into an outlet on a circuit different from that to which the receiver is connected.
- Consult the dealer or an experienced radio/TV technician for help.

Warning: You are cautioned that any change or modifications to the equipment not expressly approved by the party responsible for compliance could void your authority to operate such equipment.

NOTE: This unit was tested with shielded cables on the peripheral devices. Shielded cables must be used with the unit to insure compliance.

SAMSUNG USB PC Camera *@eye pro*

Installation Guide

1. Before the installation

! Note : Install the software first before connecting the camera with PC

• Check your PC system if it is superior than the following Minimum System

Requirements. In case of inferiority, it may cause the installation error or malfunction of the camera.

• Minimum System Requirements

- USB support Host PC
- Pentium 200MHz MMX (233MHz MMX or faster recommended)
- Windows 98/2000
- 32MB RAM (64MB recommended)
- 100MB hard disk space available
- CD-ROM drive
- 800x600, 16 bit color display (1024x768 recommended)
- Microsoft Internet Explorer for video e-mail
- LAN card or 56.6K bps modem for Video Conference
- Windows compatible sound card (full duplex sound card recommended)
- Speakers required for receiving audio
- Microphone required for sending audio

- Power on the PC and start Windows.

2. Installing the software

! Note : Install the software first before connecting the camera with PC

• Place the CD-ROM into your CD-ROM drive. The autoplay installation program

will start automatically.

- It takes 5~10 seconds to load the autoplay according to PC system.

If the software does not automatically load, run "Windows Explorer".

And then run "autoplay.exe" in CD-ROM drive.

1) Installing the Power View

The autoplay will load the installation window, as shown in right picture.

Press “Power View” and select “English”. Power View program will be installed automatically and come back to the installation window.

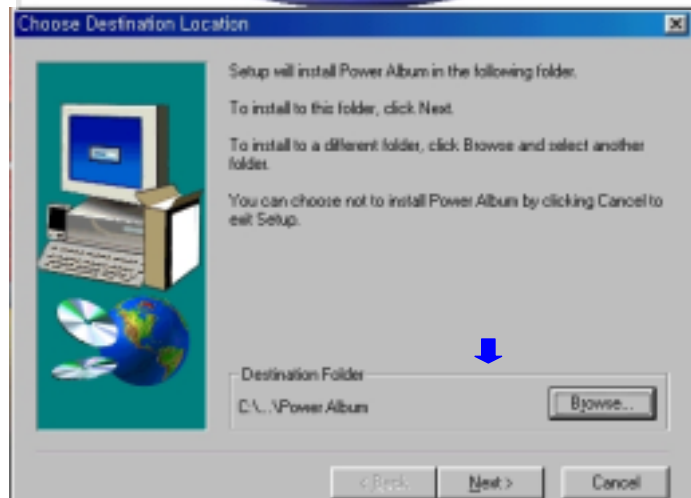


2) Installing the Power Album and finishing the installation

- Press “Power Album” and select “English”.



- Click **Next**.

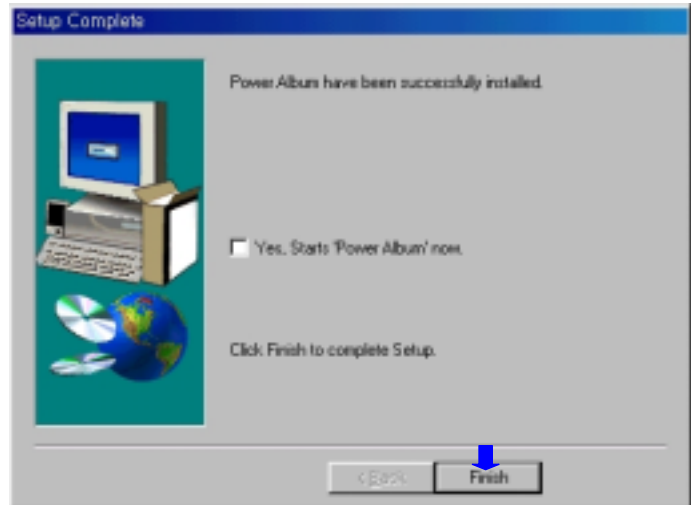


- Click **Next**.





- After successful installation, the right window will appear.
Click **Finish** and then the installation window will appear once again.



- The software installation is finished completely.
Find the finish mark (•) in the installation window and click “Exit”.

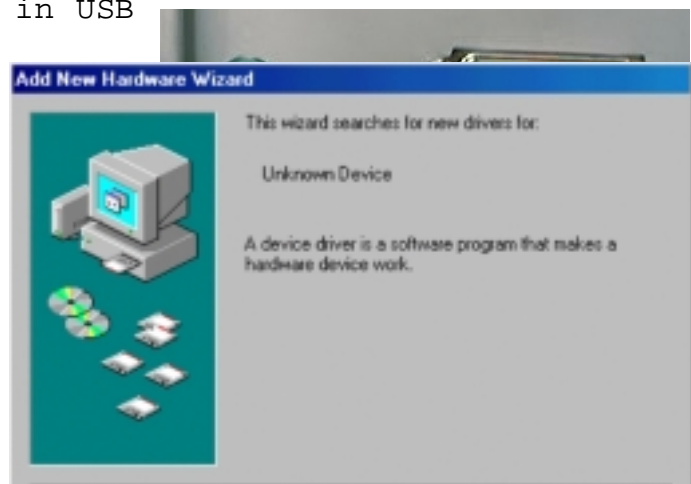


3. Connecting the camera with PC []

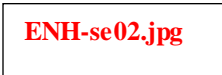
! Note : Install the software first before connecting the camera with PC.

- Plug the USB cable of camera in USB port of PC.

- “Add New Hardware Wizard”

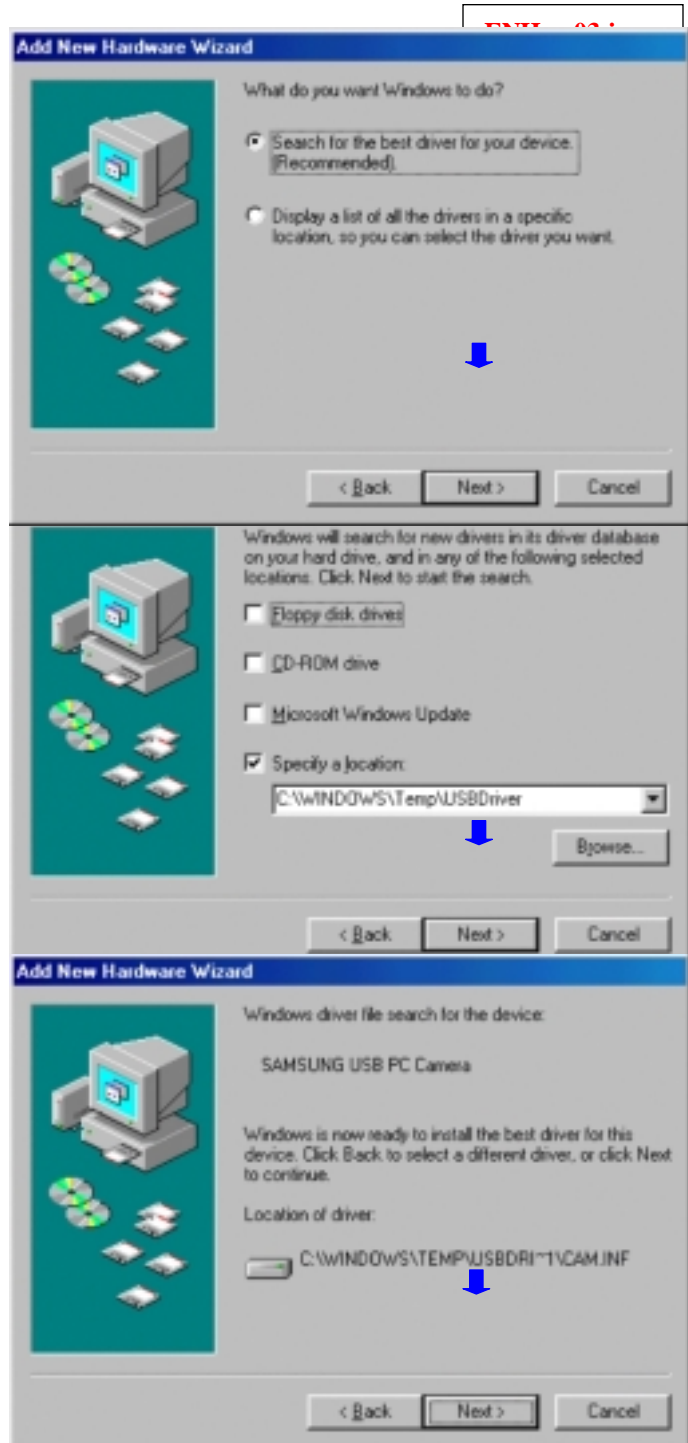


window will appear. Click **Next** to continue.



- Click **Next**.

• Find the mark (•) at “Specify a location” in Wizard window. And click **Next**.



- Click **Next**.

- After successful installation, the right window will appear.

Click **Finish** and then the indicator lamp of camera will turn on.

Now you can work with USB PC Camera.

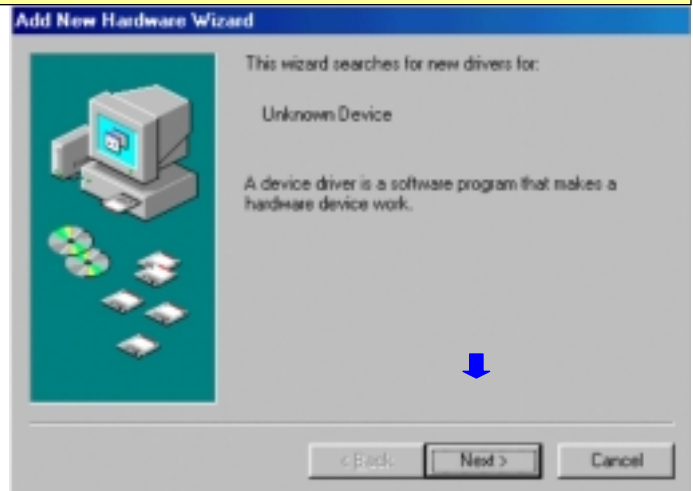


4. Connecting the camera with PC []

- If you connect the camera with PC before software installation

! Note : If you connect the camera with PC before software installation, installation error may occur. Therefore it is recommended that you should click **Cancel** during the following •--• stage and disconnect the camera with PC. and then install the software first

- "Add New Hardware Wizard" window will appear. Click **Next** to continue.



- Choose "Search for the best driver for your device (Recommended)". Click **Next**.

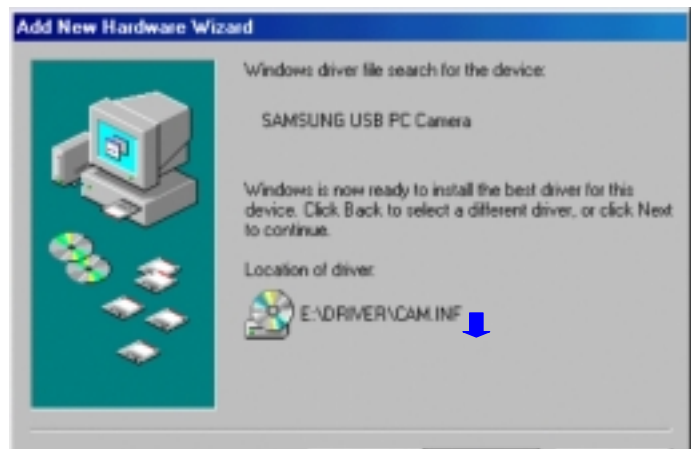




- a) Insert the installation CD-ROM.
- b) Choose "Specify a location".
- c) Click **Browse...** and select "Driver" folder in the CD-ROM drive.
- d) Click **Next**.



- Click **Next**.



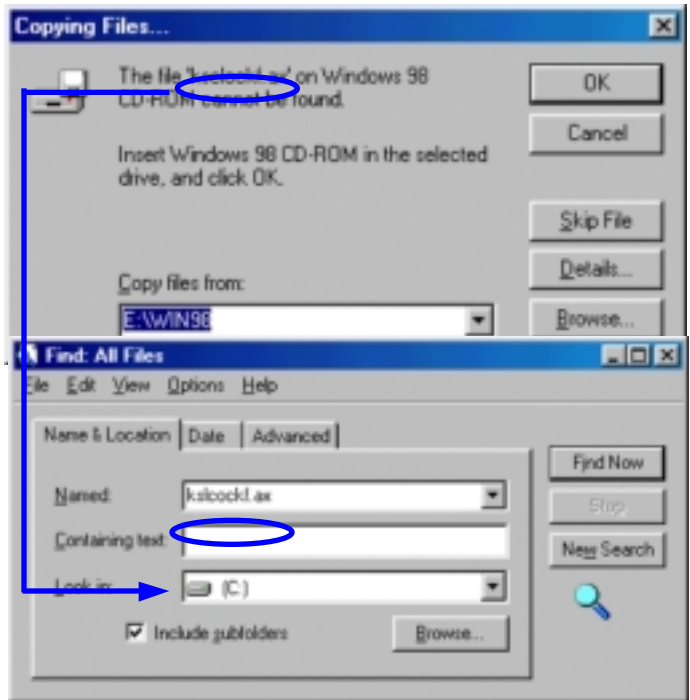
- Click **Finish** and then the indicator lamp of camera will turn on.
- Install the software referring to Page 5-8.



! Note : In case of occurring the following message during the installation, insert the Windows CD- ROM and click **OK**.



2) Remember unfound file name in right window.




3) Select Start • Find • File or folder in the task bar. Type the file name at "Named" frame and click Find Now.

Specify a location of the file at "Copy files from" frame in above

2) window. And click OK.

4) If Insert Disk message window occurs again, repeat the above 1)-3) stages.

4. Starting the program

• Select and double-click Samsung USB PC Camera icon  to start.

• Shell program will appear and you can control the application programs easily.



! Note

- Generally, application programs related with video display and record

need a lot of memories of PC. Therefore, it is recommended that you

should close all other programs before starting video application

programs.

- After starting video application program, adjust the Focusing Dial to take good video quality.

- This guide is only for installation and brief



Power View

Power View displays and captures still images & video clips. Also you can send e-mail the captured still images & video clips by it's compression technology without network troubles.

Power Album

Power Album allows the users to edit the captured still images, and create sticky pictures & photo album. It supplies more 600 clip art images and you can make CD-ROM with edited photo album.



! Note : The installation CD-ROM run Power Album. Please be cautious not to be lost supplied

Video

Video Conference links Microsoft NetMeeting allows you to hold face to face conversations over the Internet with friends and family. Collaborate with co-workers around the world with this standard video conferencing tool

! Note : Microsoft NetMeeting Ver. 2.0 is supported by Windows 98. If you do not have Microsoft NetMeeting in your computer, Video Conference does not work properly. Please setup the

Motion

It is PC surveillance program. While you are away from your computer, this program makes a sound with several beepers and captures still



images
whenever any motion is detected.

Game

! Note : You need another installation procedures for game.
Please refer to
the Installation of Game in Help of Shell program
Punch The Clown, Pop The Bubble, Bounceit.

Help

It provides a guide of using Shell program.

Exit

Exit Shell program.

7. Specifications

•Specifications are subject to change without prior notice.

Still and Video Image Quality	
Image Sensor	1/3; CMOS with VGA resolution, 640; 480 pixels
Still Image Resolution	640; 480 pixels, 24 bit color
Video Image Resolution	; VGA(640; 480) : 15 frame per second ; CIF(352; 288) : 30 frame per second ; QCIF(176; 144): 30 frame per second
Video Compression	1/50 ~ 1/100 (software compression : MPEG)
White Balance	Automatic
Exposure	Automatic or manual controlled
S/N Ratio	Greater than 48dB
Optics & Mechanical	
Lens	Manual focus ; f=6.0\$, F 1.8
Focus Range	10\$ to infinity
Interface	1.8m USB cable
Power	Supplied by USB port Power Consumption : 5V / 150\$ Active
Dimensions(W; H; D)	52; 44.6; 92\$
Software	Power View, Power Album, Motion Detector, Game * Connection with Microsoft NetMeeting
Minimum System Requirements	
; USB support Host PC ; Pentium 200MHz MMX (233MHz MMX or faster recommended) ; Windows 98/2000 ; 32MB RAM (64MB recommended) ; 100MB hard disk space available ; CD-ROM drive ; 800x600, 16 bit color display (1024x768 recommended) ; Microsoft Internet Explorer for video e-mail ; LAN card or 56.6K bps modem for Video Conference ; Windows compatible sound card (full duplex sound card recommended) ; Speakers required for receiving audio ; Microphone required for sending audio	