

H20

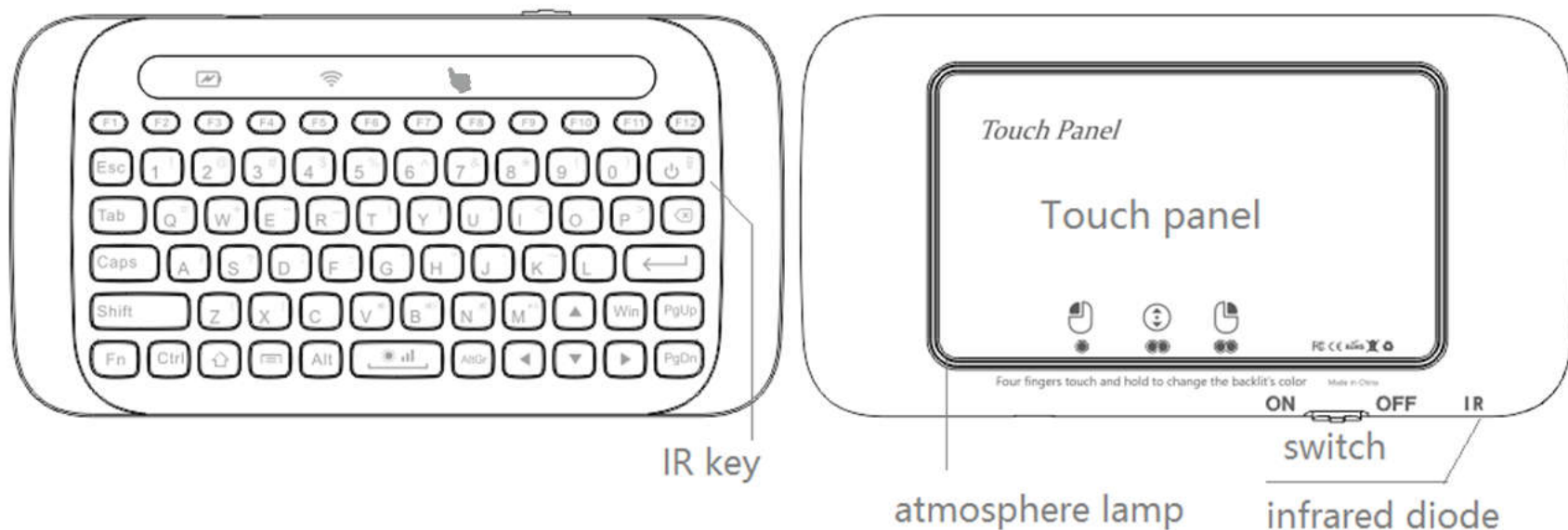
Mini Wireless Keyboard & Touchpad Installation & User Manual

FC CE RoHS  
Made In China

IN LINE WITH THE POLICY OF CONTINUED DEVELOPMENT THE
MANUFACTURER RESERVES THE RIGHT TO AMEND THE SPECIFICATIONS
WITHOUT PRIOR NOTIFICATION, THE PICTURES AND DATE IN THE
STYLEBOOK ARE CONSULT ONLY, IF THERE IS FLUCTUATION,
ACCORDING TO THE REAL OBJECT PLEASE.

Overview

Thank you for purchasing this mini keyboard. You can use it for emails, chat, remote control, message input and games. It is compatible with PC, Laptop, Mac OS, Linux, HTPC, IPTV, Google Android Smart TV Box, XBMC, Windows 2000 XP /Vista/7/8/10. Use it with your Android box or smart TV on your sofa or browse the internet in the most comfortable fashion.



System Requirements

- HID compatible USB HOST device
- Window XP, Vista,7/8/10, Linux, Android OS (With standard USB interface)

Quick Start

- Plug the USB receiver into USB interface of host device(PC, laptop, smartTV etc)
- Turn on this touchpad by toggling the up side switch.

Function Overview

-Touch Function (negative side): mouse function, including

The touch functions: mouse moving, left /right mouse button , screen scroll,
task switch

Atmosphere lamp adjustment.

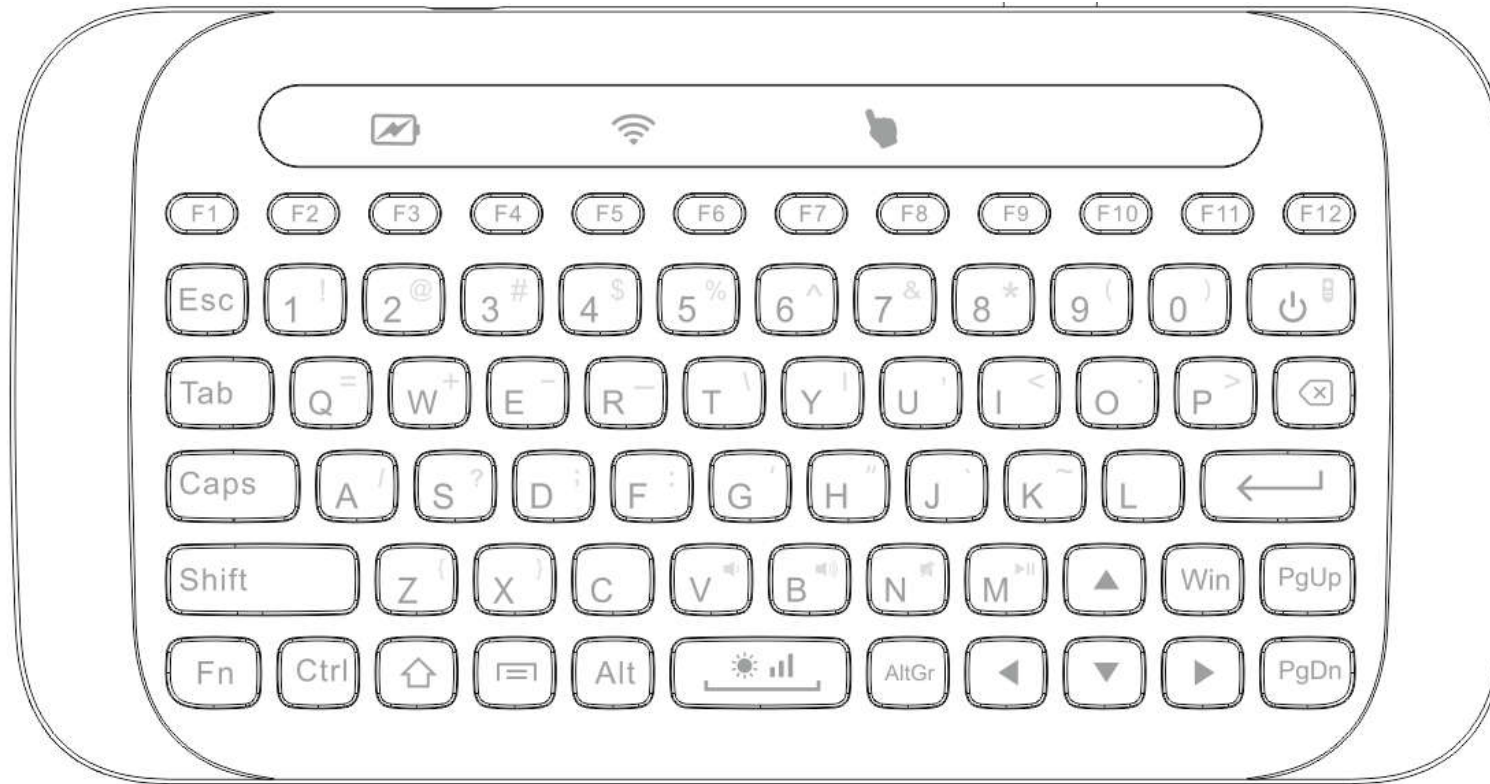
(The coordinate axis of the touch panel rotates automatically depending on the grip.)

-Keyboard function(positive side):

Keyboard function which can supply the letter input.

Infrared emission & learning

Keys Descriptions







Shortcut key combinations:

- "Fn" + "⏻" : Enter Infrared learning status.(press any key to quit)
- "Fn" + "☀️ 📶" : Keyboard backlit adjustment.


Brightness is divided into high, medium, low, and close

IR Learning

In the keyboard mode (positive side), we can press the key “Fn” + “” to learn the infrared code. For the details of learning, please refer to the following steps.

1. Press the “Fn” + “” and the led  starts flashing to indicate that it has entered the infrared learning status. If there is no any operation, it will exit the learning status in 6 seconds. (press the any key can quit from learning status)
2. Close the infrared emitting diode of IR remote control to the top of this product within 5cm.
3. Press and hold the IR key of remote control that needs to be learned. If the study is successful, the led  will keep bright for 2 second (Otherwise, please repeat step 3.) and product will quit from IR learning status automatically.

Notes:

1. Press the “Fn” and  at the same time and hold them for over 3 seconds to erase all stored infrared code and other configuration. The product will restore factory defaults.
2. *Only part of TV infrared codes can be learned.*

Touch Gestures

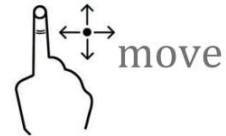
This touchpad can support the following touch gestures.

Note: zoom in, zoom out and show desktop are valid only on windows 7 or above operating system.

left mouse button



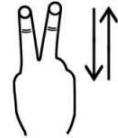
mouse moving



right mouse button



scroll the screen



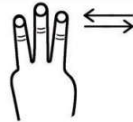
zoom out



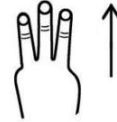
zoom in



switch apps



multitasking view



show desktop



- Drag and Drop:

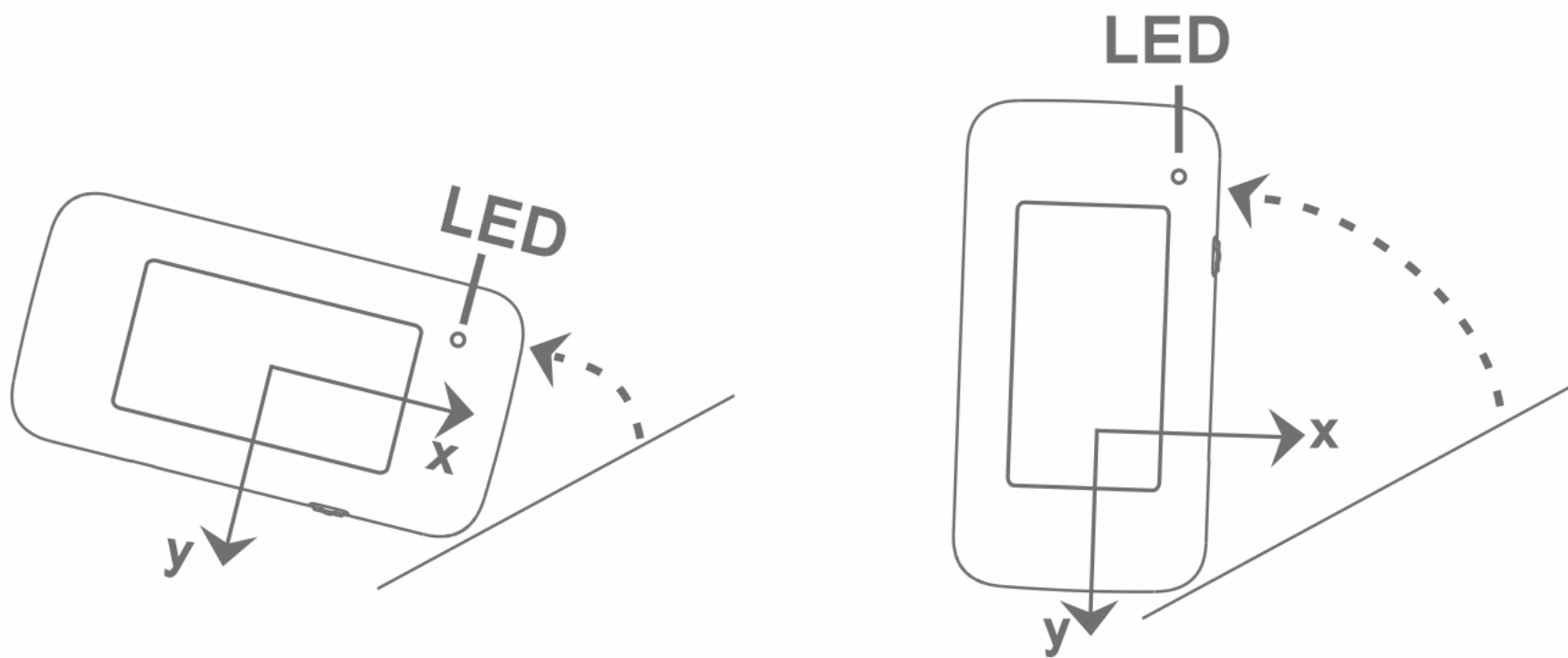
As if you were clicking and holding the mouse button down while moving it. Perform a double tap and move your finger. Release it when you're done.

-Atmosphere lamp adjustment

Four fingers touch and hold for over 2 second to change the color of atmosphere.






Auto-rotate Of Touch Panel

The touch panel adjusts the touch direction automatically according to the user's grip (similar to the auto-rotate function of a mobile phone). Please make sure that the red LED lights in the top right corner before use. If not, please follow the figure below (tilt the machine towards the body):



Indicators

Positive side:

-  : It blinks slowly means product is in low voltage status and be on in charging status.
-  : It blinks fast means wireless part can not be connected(make sure the dongle is plugged into usb port).
-  : It keep on means the key is down.
- backlit("Fn" +   " to adjust brightness)

Negative side:

- Atmosphere lamp : It breaths means that the product is working properly
: It blinks means that the product is working properly
- Touch direction led : There are four direction LEDs, but only one of them lights at a time that indicates the direction of the coordinate axis of the touch panel.

Power Saving

- For power saving, the touchpad will enter into sleep mode when there is no any operation in 3 minutes or there is wireless disconnection in 10 seconds.
- There are three methods to wake it up from sleep status:
Pick it up Tap it Press any key

Please Note

- The extension usb cable can be used for charging. It can not be used for digital connection.
- **Re-pair:** If the red LED flash fast , It means the product needs to be paired with usb-receiver. As for how to pair, please try the following steps:
 - Step1: Pull out the usb receiver and turn off the mini keyboard.
 - Step2: press and hold the key “Fn” and “PgDn” at the same time, and then turn it on. The top three leds flashing at the same time indicate the product is in re-pair status. (you can release the keys now)
 - Step3: Insert the usb receiver into your main device’s usb port and put the remote closer to the receiver within 20cm. The red LED will be off in 1s which means the pairing succeeds. If it fails for the first time, you need repeat Step1-3 again. (note: Please keep the keyboard full power before pairing.)
- **About signal interference:** specialling for android TV box and smart TV. Large size monitor device always has some signal do not work as well . When you press a, “AAAAA ...” will appear. In this case you can use the a extension cable to solve it. Please plug USB receiver to the available port, then pair and use remote keyboard.

Specifications

- Receiver(dongle): Nano style
- Connection port: With USB2.0 or above
- Transmission mode: GFSK 2.4GHz wireless, up to 10 meters
- Transmission frequency : 2411-2476MHZ(16 channels)
- Transmission Power : Less than +4bd
- Power supply: Rechargeable polymer Lithium-ion battery
- Charging voltage: 4.4V-5.25V Charging current: 300mA
- Operating current: < 15mA(backlit off)
- Sleeping current: < 100uA
- Net weight: 93g
- Size : 145*75*13.5mm

Warnings


- When charging finishes, pull out the charging cable.
- Never try to open or repair this product yourself.
- Keep this device away from fluids, such as water.

Maintenance

- Not attempt to disassemble the device or replace the rechargeable battery yourself.
- The battery will discharge when it is stored for a long time without operation.
- Use the specified charger. Disconnect the device when the battery is fully charged.
- Overcharging will shorten the battery life.

Charging The Battery

- The device uses unremovable lithium-ion battery. Please use a cables with micro-USB interface as charges.

Note: Fully charge the unit before initial operation. This device can be used when charging. But charging time will be extended. When the battery is low, the led  will blink to warn the user. The unit will be automatically turned off if battery has been depleted.

Disposal



Always dispose the used appliance at a recycling center. Do not dispose the used appliance together with the household waste.

Note:

Due to 2.4G wave technology adoption, the connection can be subject to interference from obstacles, like walls, metals, or other electronic devices. Please keep the space between the keyboard and USB receiver free of obstacle.

In line with the policy of continued development, the manufacturer reserves the right to manual are for reference only. Please operate according to the real design.

FCC Caution:

This device complies with part 15 of the FCC Rules. Operation is subject to the following two conditions: (1) This device may not cause harmful interference, and (2) this device must accept any interference received, including interference that may cause undesired operation.

Any Changes or modifications not expressly approved by the party responsible for compliance could void the user's authority to operate the equipment.

Note: This equipment has been tested and found to comply with the limits for a Class B digital device, pursuant to part 15 of the FCC Rules. These limits are designed to provide reasonable protection against harmful interference in a residential installation. This equipment generates uses and can radiate radio frequency energy and, if not installed and used in accordance with the instructions, may cause harmful interference to radio communications. However, there is no guarantee that interference will not occur in a particular installation. If this equipment does cause harmful interference to radio or television reception, which can be determined by turning the equipment off and on, the user is encouraged to try to correct the interference by one or more of the following measures:

- Reorient or relocate the receiving antenna.
- Increase the separation between the equipment and receiver.
- Connect the equipment into an outlet on a circuit different from that to which the receiver is connected.
- Consult the dealer or an experienced radio/TV technician for help.