

Owner's Manual & Safety Instructions

Save This Manual Keep this manual for the safety warnings and precautions, assembly, operating, inspection, maintenance and cleaning procedures. Write the product's serial number in the back of the manual near the assembly diagram (or month and year of purchase if product has no number). Keep this manual and the receipt in a safe and dry place for future reference.

PITTSBURGH[®] AUTOMOTIVE

ITEM 61745

12V, 150 PSI, High Volume Air Compressor



Visit our website at: <http://www.harborfreight.com>
Email our technical support at: productsupport@harborfreight.com

When unpacking, make sure that the product is intact and undamaged. If any parts are missing or broken, please call 1-800-444-3353 as soon as possible.

Copyright© 2013 by Harbor Freight Tools®. All rights reserved.

No portion of this manual or any artwork contained herein may be reproduced in any shape or form without the express written consent of Harbor Freight Tools. Diagrams within this manual may not be drawn proportionally. Due to continuing improvements, actual product may differ slightly from the product described herein. Tools required for assembly and service may not be included.

⚠ WARNING





**Read this material before using this product.
Failure to do so can result in serious injury.
SAVE THIS MANUAL.**

Table of Contents

Safety	2	Maintenance	7
Specifications	5	Parts List and Diagram	10
Operation	6	Warranty	12

PITTSBURGH[®] AUTOMOTIVE

WARNING SYMBOLS AND DEFINITIONS

	This is the safety alert symbol. It is used to alert you to potential personal injury hazards. Obey all safety messages that follow this symbol to avoid possible injury or death.
 DANGER	Indicates a hazardous situation which, if not avoided, will result in death or serious injury.
 WARNING	Indicates a hazardous situation which, if not avoided, could result in death or serious injury.
 CAUTION	Indicates a hazardous situation which, if not avoided, could result in minor or moderate injury.
NOTICE CAUTION	Addresses practices not related to personal injury.

IMPORTANT SAFETY INFORMATION

General Safety Warnings



WARNING Read all safety warnings and instructions.

Failure to follow the warnings and instructions may result in electric shock, fire and/or serious injury.
Save all warnings and instructions for future reference.

The warnings, precautions, and instructions discussed in this instruction manual cannot cover all possible conditions and situations that may occur. It must be understood by the operator that common sense and caution are factors which cannot be built into this product, but must be supplied by the operator.

1. Work area safety

- a. **Keep work area clean and well lit.**
Cluttered or dark areas invite accidents.
- b. **Do not operate the Compressor in explosive atmospheres, such as in the presence of flammable liquids, gases or dust.**
Compressor motors produce sparks which may ignite the dust or fumes.
- c. **Keep children and bystanders away from an operating compressor.**

2. Electrical safety

- a. **Compressor plugs must match the outlet. Never modify the plug in any way. Do not use any adapter plugs with grounded compressors.** Standard plugs and matching outlets will reduce risk of electric shock.
- b. **Do not expose compressor to rain or wet conditions.** Water entering a compressor will increase the risk of electric shock.
- c. **Do not abuse the cord. Never use the cord for unplugging the compressor. Keep cord away from heat, oil, sharp edges or moving parts.** Damaged or entangled cords increase the risk of electric shock.

3. Personal safety

- a. **Stay alert, watch what you are doing and use common sense when operating this compressor. Do not use this compressor while you are tired or under the influence of drugs, alcohol or medication.** A moment of inattention while operating a compressor may result in serious personal injury.
- b. **Use personal protective equipment. Always wear ANSI-approved eye protection during setup and use.**
- c. **Prevent unintentional starting. Ensure the switch is in the off-position before connecting to power source or moving the compressor.**

4. Compressor use and care

- a. **Do not use the compressor if the switch does not turn it on and off.** Any compressor that cannot be controlled with the switch is dangerous and must be repaired.
- b. **Disconnect the plug from the power source before making any adjustments, changing accessories, or storing the compressor.** Such preventive safety measures reduce the risk of starting the compressor accidentally.
- c. **Store an idle compressor out of the reach of children and do not allow persons unfamiliar with the compressor or these instructions to operate it.** A compressor is dangerous in the hands of untrained users.
- d. **Maintain the compressor. Keep the compressor clean for better and safer performance. Follow instructions for lubricating and changing accessories. Keep dry, clean and free from oil and grease. Check for misalignment or binding of moving parts, breakage of parts and any other condition that may affect the compressor's operation. If damaged, have the compressor repaired before use.** Many accidents are caused by a poorly maintained compressor.
- e. **Use the compressor in accordance with these instructions, taking into account the working conditions and the work to be performed.** Use of the compressor for operations different from those intended could result in a hazardous situation.

5. Service

- a. **Have your compressor serviced by a qualified repair person using only identical replacement parts.** This will ensure that the safety of the compressor is maintained.

Air Compressor Safety Warnings

SAFETY

1. **Risk of fire or explosion - do not spray flammable liquid in a confined area or towards a hot surface. Spray area must be well-ventilated. Do not smoke while spraying or spray where spark or flame is present. Arcing parts - keep compressor at least 20 feet away from explosive vapors, such as when spraying with a spray gun.**
2. **Risk of bursting - do not adjust regulator higher than marked maximum pressure of attachment.**
3. **Risk of injury - do not direct air stream at people or animals.**
4. **Do not use to supply breathing air.**
5. **Do not leave compressor unattended for an extended period while plugged in. Unplug compressor after working.**
6. **Keep compressor well-ventilated. Do not cover compressor during use.**
7. **Do not use cigarette lighter adaptor to power this unit.** If powered with the battery of a vehicle, start and run engine during inflation period.
8. Do not remove the valve cover or adjust internal components.
9. Compressor head gets hot during operation. Do not touch it or allow children nearby during or immediately following operation.
10. Do not use the air hose to move the compressor.
11. The use of accessories or attachments not recommended by the manufacturer may result in a risk of injury to persons.
12. All air line components, including hoses, pipe, connectors, filters, etc., must be rated for a minimum working pressure of 150 PSI, or 150% of the maximum system pressure, whichever is greater.
13. Industrial applications must follow OSHA guidelines.
14. Maintain labels and nameplates on the compressor. These carry important safety information. If unreadable or missing, contact Harbor Freight Tools for a replacement.
15. This product is not a toy. Keep it out of reach of children.
16. Operate unit on level surface.
17. People with pacemakers should consult their physician(s) before use. Electromagnetic fields in close proximity to heart pacemaker could cause pacemaker interference or pacemaker failure.
18. **WARNING:** The brass components of this product contain lead, a chemical known to the State of California to cause birth defects (or other reproductive harm). (California Health & Safety code § 25249.5, *et seq.*)
19. **This Compressor will automatically shut off on overload or under excessive heat.** Should this occur, turn the Power Switch to its "OFF" position. Wait until the Compressor cools. Then, turn the Power Switch to its "ON" position to resume work.

SETUP

OPERATION

Vibration Precautions

This tool vibrates during use. Repeated or long-term exposure to vibration may cause temporary or permanent physical injury, particularly to the hands, arms and shoulders. To reduce the risk of vibration-related injury:

Anyone using vibrating tools regularly or for an extended period should first be examined by a doctor and then have regular medical check-ups to ensure medical problems are not being caused or worsened from use. Pregnant women or people who have impaired blood circulation to the hand, past hand injuries, nervous system disorders, diabetes, or Raynaud's Disease should not use this tool. If you feel any symptoms related to vibration (such as tingling, numbness, and white or blue fingers), seek medical advice as soon as possible.



SAVE THESE INSTRUCTIONS.

MAINTENANCE

Specifications

Electrical Rating	12 VDC
Maximum Air Pressure	150 PSI
Air Flow Capacity	1.5 CFM

Components and Controls

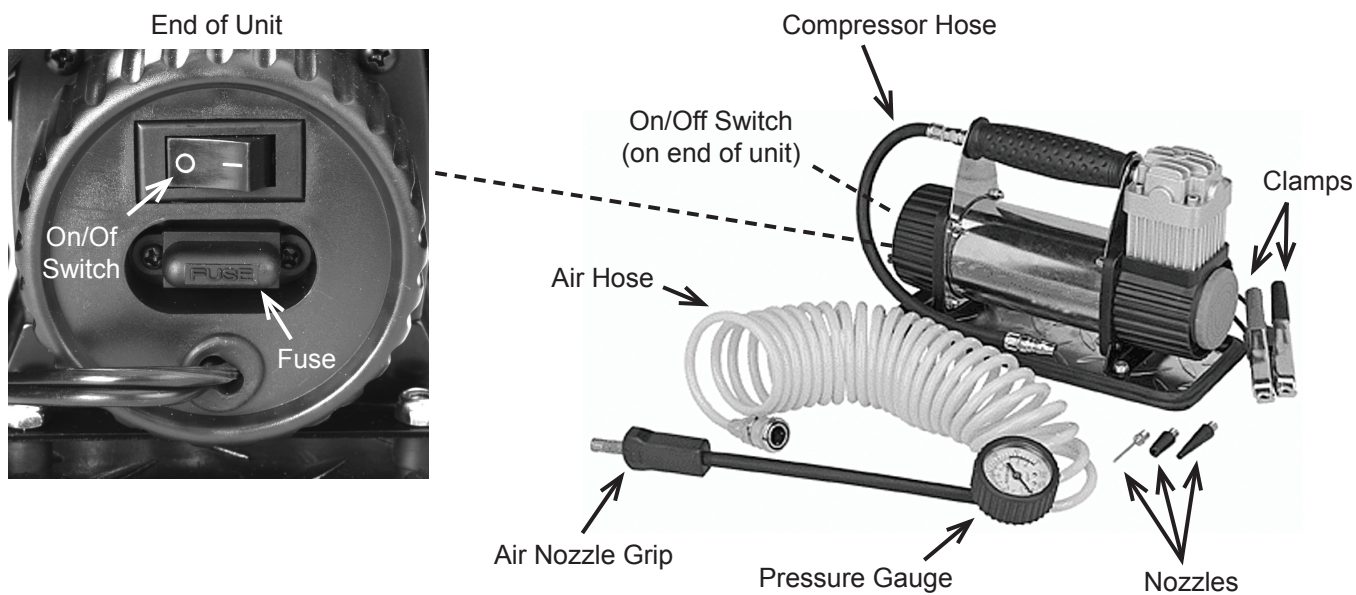


Figure A

SAFETY

SETUP

OPERATION

MAINTENANCE

Operating Instructions



Read the **ENTIRE IMPORTANT SAFETY INFORMATION** section at the beginning of this manual including all text under subheadings therein before set up or use of this product.

Compressor Area Set Up

1. Designate a work area that is clean and well-lit. The work area must not allow access by children or pets to prevent injury.
2. Position the Compressor on a flat level surface. Route the air hose along a safe route to reach the work area without creating a tripping hazard or exposing the air hose to possible damage. The air hose must be long enough to reach the work area and have enough slack to allow free movement while working.

General Operation

1. Turn the On/Off Switch to the "OFF" position.
 2. Connect the coiled Air Hose to the Compressor Hose.
 - a. Pull back on the collar of the Air Hose's coupler.
 - b. Firmly insert the Compressor Hose connector into the coupler.
 - c. Release the collar, which will snap the connector into place.
 - d. Pull lightly on both hoses to ensure a proper connection.
 3. Select the desired Nozzle accessory and attach it to the end of the Air Nozzle.
 4. Turn on the car engine.
 5. Attach the clamps on the Power Cord onto the 12V automotive battery (not included) power source.
 - a. Connect the RED clamp of the Compressor to the positive (+) terminal of the battery.
 - b. Connect the BLACK terminal of the Compressor to a good ground source on the engine block.
WARNING! Do NOT connect it to the other battery terminal.
- Note:** Connect to 12VDC power source only.
6. Be sure the valve stem of the item to be inflated is clean and free of dirt.
 7. Turn the Compressor On/Off Switch to the "ON" position.
- Note:** Turn the Compressor on *before* connecting to the tire valve to prevent blowing the fuse.
8. Holding the Air Hose, connect the Nozzle accessory to the valve stem of the item to be inflated.
 9. Monitor the Pressure Gauge carefully to avoid over-inflating the item.
 10. Continue inflating until the recommended pressure is reached.
 11. Turn the compressor On/Off Switch to the "OFF" position.
 12. Remove the Nozzle from the object.
 13. Verify tire pressure with a tire pressure gauge (not included), then replace the valve cap where applicable.
 14. If the tire pressure is low, repeat the steps beginning with Step 7.
 15. When finished, remove the Clamps from the power source.
- CAUTION!** The metal parts of the compressor and hoses will become hot during use. Do not touch them.
16. Allow the Compressor to cool, then wipe down and replace into the included storage bag. Return the Nozzles to the small storage bag attached to the Compressor Hose.
 17. Store in a dry location.

PITTSBURGH[®] AUTOMOTIVE



Procedures not specifically explained in this manual must be performed only by a qualified technician.

⚠ WARNING

TO PREVENT SERIOUS INJURY FROM ACCIDENTAL OPERATION:

Turn the Power Switch “OFF” and disconnect the Battery Clamps before performing any inspection, maintenance, or cleaning procedures.

TO PREVENT SERIOUS INJURY FROM COMPRESSOR FAILURE:

Do not use damaged equipment. If abnormal noise or vibration occurs, have the problem corrected before further use.

Cleaning, Maintenance, and Lubrication

1. **BEFORE EACH USE**, inspect the general condition of the air compressor. Check for:
 - loose hardware,
 - misalignment or binding of parts,
 - cracked or broken parts,
 - damaged electrical wiring, and
 - any other condition that may affect its safe operation.
2. **AFTER USE**, wipe external surfaces of the compressor with a clean cloth.
3. Store the Air Compressor in a clean, dry, safe location out of reach of children and other unauthorized people.
4. **AFTER EVERY 500 HOURS OF REGULAR USE**, replace O-Rings. **Please note:** This work should only be done by a qualified service technician.
5. Rotate Filter counterclockwise and remove from the compressor. Gently pry the cover from the threaded end. Remove the filter, wash in warm water and liquid soap (no harsh powder soap), rinse thoroughly, and let dry.
6. Insert back into the filter holder. Align the three indexing ribs on filter housing with the three recessed grooves in the filter cover and push the cover, snapping it onto the housing. Thread the assembly back into the front cover, being careful not to cross thread it.
7. Lubricate the Shaft and Snap Rings after using 20 times.
 - a. Remove the four Screws holding the Front Cover in place and slide the Front Cover off. (See Assembly Diagram.)
 - b. Put a drop or two of machine oil on the Shaft and Piston Ring. Note: Turn the Compressor upside down to allow the oil to penetrate onto the piston rings.
 - c. Slide the Front Cover back on and secure in place with the four screws.



Figure B

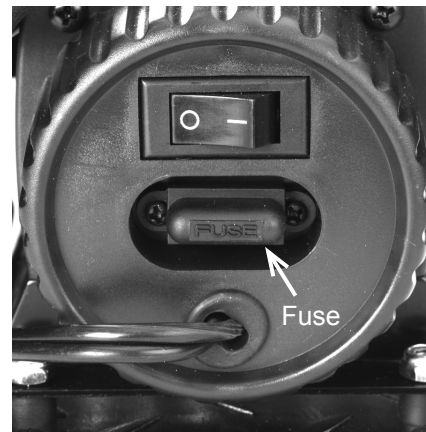


Figure C

8. If the Fuse needs to be replaced, unthread the two screws holding the fuse in place. Slide out the Fuse holder, replace the old Fuse with a new Fuse (included in the inflator nozzle bag), and slide the Fuse holder back into its slot. Fasten back into place with the screws.

WARNING! To prevent fire, replace fuse only with fuse of same type and rating. Do not replace with any other object.


Troubleshooting

SAFETY

SETUP

OPERATION

MAINTENANCE

Problem	Possible Causes	Likely Solutions
Decreased output.	<div>1. Not enough air pressure and/or air flow.</div> <div>2. Blocked air inlet Filter (3).</div> <div>3. Air leaking from loose housing or connections.</div> <div>4. Mechanism contaminated.</div>	<div>1. Check for loose connections.</div> <div>2. Clean air inlet screen of buildup.</div> <div>3. Make sure housing and connections are properly assembled and tight.</div> <div>4. Have qualified technician clean and where possible, lubricate mechanism.</div>
Severe air leakage. (Slight air leakage is normal, especially on older tools.)	<div>1. Cross-threaded housing components.</div> <div>2. Loose housing.</div> <div>3. Dirty, worn or damaged valve.</div>	<div>1. Check for incorrect alignment and uneven gaps. If cross-threaded, disassemble and replace damaged parts before use.</div> <div>2. Tighten housing assembly. If housing cannot be tightened properly, internal parts may be misaligned.</div> <div>3. Clean or replace valve assembly.</div>
No output	<div>1. Poor clamp connection.</div> <div>2. Power Switch in Off (O) position.</div> <div>3. Run-down battery.</div> <div>4. Blown Fuse.</div>	<div>1. Clean clamps and reconnect properly.</div> <div>2. Turn Power Switch to On (I) position.</div> <div>3. Recharge battery.</div> <div>4. Replace Fuse.</div>
<div> Follow all safety precautions whenever diagnosing or servicing the tool. Disconnect from battery before service.</div>		

PLEASE READ THE FOLLOWING CAREFULLY

THE MANUFACTURER AND/OR DISTRIBUTOR HAS PROVIDED THE PARTS LIST AND ASSEMBLY DIAGRAM IN THIS MANUAL AS A REFERENCE TOOL ONLY. NEITHER THE MANUFACTURER OR DISTRIBUTOR MAKES ANY REPRESENTATION OR WARRANTY OF ANY KIND TO THE BUYER THAT HE OR SHE IS QUALIFIED TO MAKE ANY REPAIRS TO THE PRODUCT, OR THAT HE OR SHE IS QUALIFIED TO REPLACE ANY PARTS OF THE PRODUCT. IN FACT, THE MANUFACTURER AND/OR DISTRIBUTOR EXPRESSLY STATES THAT ALL REPAIRS AND PARTS REPLACEMENTS SHOULD BE UNDERTAKEN BY CERTIFIED AND LICENSED TECHNICIANS, AND NOT BY THE BUYER. THE BUYER ASSUMES ALL RISK AND LIABILITY ARISING OUT OF HIS OR HER REPAIRS TO THE ORIGINAL PRODUCT OR REPLACEMENT PARTS THERETO, OR ARISING OUT OF HIS OR HER INSTALLATION OF REPLACEMENT PARTS THERETO.

SAFETY

SETUP

OPERATION

MAINTENANCE

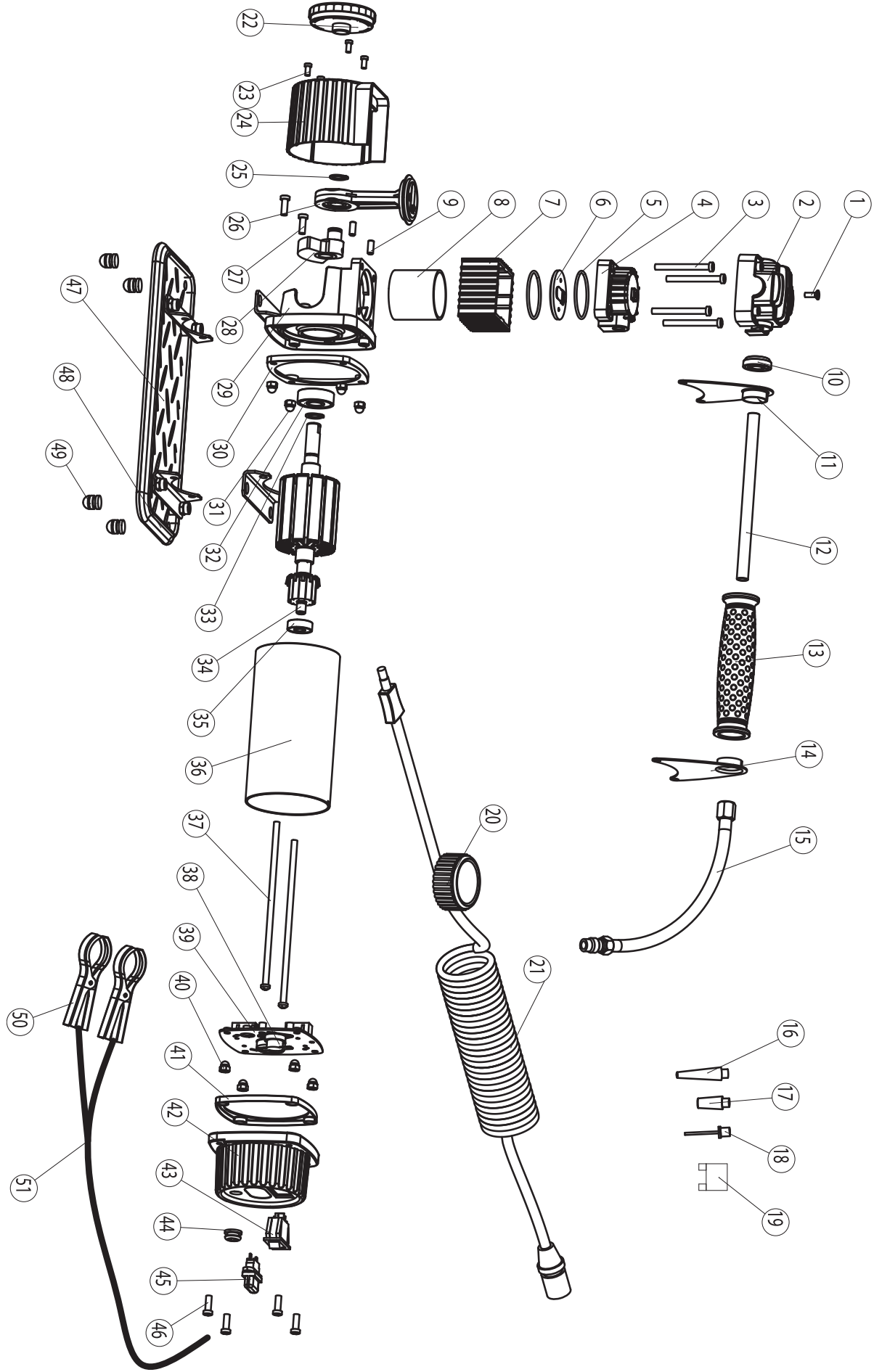


Parts List

Part	Description	Qty
1	Cylinder Head Screw M4x12	1
2	Cylinder Head Cover	1
3	Screw Arbor M5x50	4
4	Cylinder Cover	1
5	O Ring	2
6	Outlet Plate Assembly	1
7	Radiator	1
8	Cylinder Sleeve	1
9	Screw M5x12	2
10	Carrier Ring	1
11	Iron Bracket	1
12	Outlet Pipe	1
13	Handle	1
14	Iron Bracket	1
15	Compressor Hose	1
16	Big Air Nozzle	1
17	Small Air Nozzle	1
18	Needle	1
19	Fuse	1
20	Gauge	1
21	Air Hose	1
22	Filter	1
23	Screw M4x8	4
24	Front Cover	1
25	Snap Ring Ø12	1
26	Shaft	1

Part	Description	Qty
27	Screw M5x14	2
28	Eccentric Wheel	1
29	Frame Comp	1
30	Ornament Ring	1
31	Cap Nut M5	4
32	Bearing 6201	1
33	Snap Ring Ø12	1
34	Motor Assembly	1
35	Bearing 608	1
36	Motor Cover	1
37	Screw Arbor M5x150	2
38	Thermal Protector	1
39	Carbon Brush Assembly	1
40	Cap Nut M5	4
41	Ornament Ring	1
42	Back Cover	1
43	Power Switch	1
44	Weeding Protector	1
45	Fuse	1
46	Screw M5x14	4
47	Baseboard	1
48	Baseboard Sheath	1
49	Rubber Mat	4
50	Battery Clip	2
51	Power Cord	1

Assembly Diagram



Record Product's Serial Number Here: _____

Note: If product has no serial number, record month and year of purchase instead.

Note: Some parts are listed and shown for illustration purposes only, and are not available individually as replacement parts.

Limited 90 Day Warranty

Harbor Freight Tools Co. makes every effort to assure that its products meet high quality and durability standards, and warrants to the original purchaser that this product is free from defects in materials and workmanship for the period of 90 days from the date of purchase. This warranty does not apply to damage due directly or indirectly, to misuse, abuse, negligence or accidents, repairs or alterations outside our facilities, criminal activity, improper installation, normal wear and tear, or to lack of maintenance. We shall in no event be liable for death, injuries to persons or property, or for incidental, contingent, special or consequential damages arising from the use of our product. Some states do not allow the exclusion or limitation of incidental or consequential damages, so the above limitation of exclusion may not apply to you. THIS WARRANTY IS EXPRESSLY IN LIEU OF ALL OTHER WARRANTIES, EXPRESS OR IMPLIED, INCLUDING THE WARRANTIES OF MERCHANTABILITY AND FITNESS.

To take advantage of this warranty, the product or part must be returned to us with transportation charges prepaid. Proof of purchase date and an explanation of the complaint must accompany the merchandise. If our inspection verifies the defect, we will either repair or replace the product at our election or we may elect to refund the purchase price if we cannot readily and quickly provide you with a replacement. We will return repaired products at our expense, but if we determine there is no defect, or that the defect resulted from causes not within the scope of our warranty, then you must bear the cost of returning the product.

This warranty gives you specific legal rights and you may also have other rights which vary from state to state.

PITTSBURGH[®] **AUTOMOTIVE**

3491 Mission Oaks Blvd. • PO Box 6009 • Camarillo, CA 93011 • (800) 444-3353