

PNEUMATIC DUST COLLECTOR

Model 2448

ASSEMBLY AND OPERATING INSTRUCTIONS



3491 Mission Oaks Blvd., Camarillo, CA 93011
Visit our Web site at <http://www.harborfreight.com>

Copyright © 2003 by Harbor Freight Tools®. All rights reserved. No portion of this manual or any artwork contained herein may be reproduced in any shape or form without the express written consent of Harbor Freight Tools®.

For technical questions and replacement parts, please call 1-800-444-3353

Specifications

ITEM	DESCRIPTION
Max. Working Pressure	125 PSI
Overall Dimensions	21-1/2" Triangulation at Wheels x 30-3/4"H
Castor Dimensions	Qty 3, Swivel Housing w/2" Dia. x 7/8" Wheels
Tank Dimensions	2-7/8" Dia. to 11-1/2" Dia. x 20-1/2"H x 3/16" Thick at top
Filter	Paper, 30 Micron capacity, one year lifespan if cleaned with blow gun after each use
Compatibility	Can be used with any 10-60 Gallon Abrasive Blast Cabinets with a 1-1/4" Dia. Outlet
Net Weight	18.8 Lbs.

Save This Manual

You will need the manual for the safety warnings and precautions, assembly instructions, operating and maintenance procedures, parts list and diagram. Keep your invoice with this manual. Write the invoice number on the inside of the front cover. Keep the manual and invoice in a safe and dry place for future reference.

Safety Warnings and Precautions

WARNING: When using this product, basic safety precautions should always be followed to reduce the risk of personal injury and damage to equipment.

Read all instructions before using this product!

1. **Keep children away.** This product is not a toy. Do not let children play with this product or its attachments. Keep them away from all electrical cords.
2. **Store idle equipment.** Store this product in a dry location when not in use, and keep away from children.
3. **Do not force product.** It will do the job better and more safely at the rate for which it was intended. Do not use inappropriate attachments in an attempt to exceed the product capacity.
4. **Use the right product for the job.** Do not attempt to force a small product or attachment to do the work of a larger industrial product. There are certain applications for which this product was designed. Do not modify this product and do not use this product for a purpose for which it was not intended.
5. **Dress properly.** Do not wear loose clothing or jewelry as it can be caught in moving parts. Wear restrictive hair covering to contain long hair.
6. **Do not overreach.** Keep proper footing and balance at all times.
7. **Maintain product with care.** Inspect regularly for safer performance. Follow instructions for changing accessories.

8. **Disconnect power.** Unplug product when not in use.
9. **Avoid unintentional starting.** Be sure the switch is in the Off position when not in use and before plugging in.
10. **Stay alert.** Watch what you are doing, use common sense. Do not operate any product when you are tired.
11. **Check for damaged parts.** Before using any product, any part that appears damaged should be carefully checked to determine that it will operate properly and perform its intended function. Check for alignment and binding of moving parts; any broken parts or mounting fixtures; and any other condition that may affect proper operation. Any part that is damaged should be properly repaired or replaced by a qualified technician. Do not use the product if any switch does not turn On and Off properly.
12. **Replacement parts and accessories.** When servicing, use only identical replacement parts. Use of any other parts will void the warranty. Only use accessories intended for use with this product. Approved accessories are available from Harbor Freight Tools.
13. **Do not operate product if under the influence of alcohol or drugs.** Read warning labels on prescriptions to determine if your judgment or reflexes are impaired while taking drugs. If there is any doubt, do not operate the product.
14. **Use proper size and type extension cord.** If an extension cord is required, it must be of the proper size and type to supply the correct current to the tool without heating up. Otherwise, the extension cord could melt and catch fire, or cause electrical damage to the tool.
15. **Maintenance.** For your safety, service and maintenance should be performed regularly by a qualified technician.

Note: Performance of this product (if powered by line voltage) may vary depending on variations in local line voltage. Extension cord usage may also affect performance.

Special Warnings for This Product

1. Store this product in a dry location. Do not leave outdoors for extended periods of time.
2. Never use this product to pick up items that are smoking or burning. Never pick up flammable or combustible liquids with this product.

3. Do not vacuum toxic, carcinogenic, combustible or other hazardous materials. There are specialized products that are specifically designed to pick up these types of materials.
4. Do not use this product without a filter installed.
5. Disconnect this product from its power source before changing the filter or adjusting the hose.
6. It is recommended that you empty the Tank after each use, or when it is 3/4 full of materials.

Warning: The warnings, cautions, and instructions discussed in this instruction manual cannot cover all possible conditions and situations that may occur. It must be understood by the operator that common sense and caution are factors which cannot be built into this product, but must be supplied by the operator.

Unpacking

When unpacking, check to make sure all parts listed on Page 7 are included. If any parts are missing or broken, please call Harbor Freight Tools at the number on the cover of this manual.

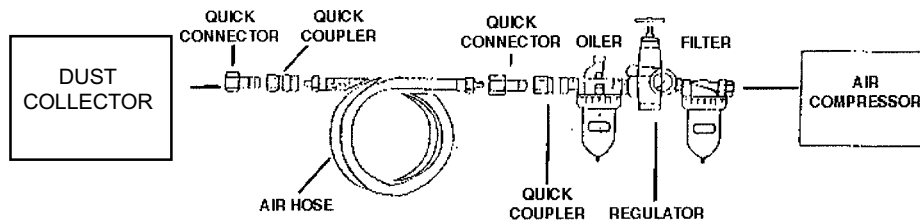
Assembly

Refer to the Parts List and Assembly Diagram on Page 7 for all parts numbers.

1. Assemble your Dust Collector on a clean, level surface.
2. First, arrange the three Connecting Plates [9] on the ground in the shape of a triangle. At one of the joining points between two of the Connecting Plates, position one of the Legs [8] perpendicular to the ground as shown in the Assembly Diagram. Attach the two Connecting Plates and the Leg using a 1/4" x 3/4" Screw [5] and a 1/4" Nut [4]. Repeat to secure to other two Legs.
3. Position the Tank [11] between the three Legs and secure in place using the six 1/4" x 5/8" Screws [6].
4. Place the Tank Cover [12] on top of the Tank and fasten the metal latches.
5. If the Filter [13] is not already in place, insert a clean Filter into the Screen [14], cover with the Screen Cover [15] and fasten the Cover Nut [16].
6. To attach the Castors [3], slide pegs at the top of each Castor through the holes in the bottom of the base you built in Steps 1-3 and secure with Nuts.

7. Fit Suction Hose [1] over the Vacuum Body with Air Switch Assembly [10].
8. To connect the Hose to an Abrasive Blast Cabinet (not included), unscrew the Connecting Nut [2-2] and remove the O-Ring [2-1]. Fit the Connecting Hose [2] into the 1-1/4" Dia. outlet in the Blast Cabinet. Reaffix the O-Ring and the Connecting Nut to the Hose from the inside of the Blast Cabinet. Be sure the Hose is tightly connected before use.

Air Connection



Note: Air Compressor is not supplied.

1. You will need to prepare a 1/2" Air Connector (not included with this product) and connect it to the valve located on the Vacuum Body with Air Switch Assembly.
2. Wrap the Air Connector with a pipe thread seal tape before connecting to a 3/8" I.D. Air Source Hose (not included). Connect the Air Source Hose to the Valve.
3. Air pressure should not exceed 125 psi.

This air powered product requires lubrication during operation. For best results, it is recommended to have an oiler and water filter in line with the air supply as shown. This will extend the life of the product.

Operation

The product is intended for use with a 10-60 gallon Abrasive Blast Cabinet (not included). Read all instructions for Operating the Sand Blast Cabinet before using this product.

1. Follow instructions in Step 8, above, for connecting the Hose to the Sand Blast Cabinet.
2. Connect the Dust Collector to the Air Compressor according to the instructions on Page 5, "Air Connection."
3. Use the Air Switch attached to the Air Switch Assembly to control the amount of air flow through the product. Air Compressor pressure should not exceed 125 psi.

4. Disconnect the product from the Air Compressor when not in use and store in a dry location, away from children.

Cleaning and Replacing the Filter

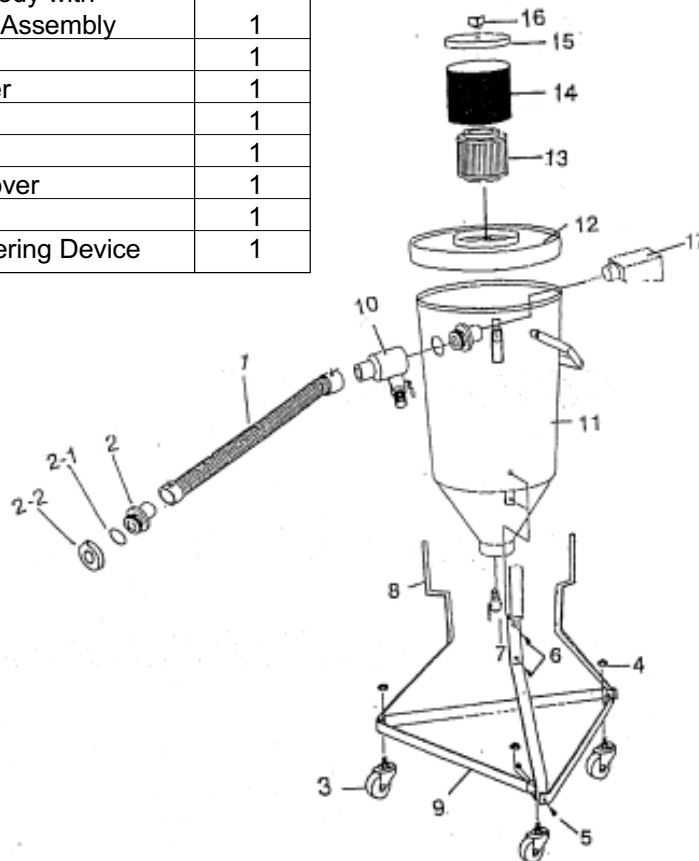
1. Disconnect Dust Collector from power source.
2. Loosen the Cover Nut and remove the Screen Cover as shown on the Assembly Diagram on page 7. Lift the Filter from the Screen and clean with a blow gun. The Filter will last approximately one year if cleaned properly with a blow gun after each use.
3. Replace the Filter, Screen Cover and Cover Nut. Tighten Cover Nut.

PLEASE READ THE FOLLOWING CAREFULLY

THE MANUFACTURER AND/OR DISTRIBUTOR HAS PROVIDED THE PARTS DIAGRAM IN THIS MANUAL AS A REFERENCE TOOL ONLY. NEITHER THE MANUFACTURER NOR DISTRIBUTOR MAKES ANY REPRESENTATION OR WARRANTY OF ANY KIND TO THE BUYER THAT HE OR SHE IS QUALIFIED TO MAKE ANY REPAIRS TO THE PRODUCT OR THAT HE OR SHE IS QUALIFIED TO REPLACE ANY PARTS OF THE PRODUCT. IN FACT, THE MANUFACTURER AND/OR DISTRIBUTOR EXPRESSLY STATES THAT ALL REPAIRS AND PARTS REPLACEMENTS SHOULD BE UNDERTAKEN BY CERTIFIED AND LICENSED TECHNICIANS AND NOT BY THE BUYER. THE BUYER ASSUMES ALL RISK AND LIABILITY ARISING OUT OF HIS OR HER REPAIRS TO THE ORIGINAL PRODUCT OR REPLACEMENT PARTS THERETO, OR ARISING OUT OF HIS OR HER INSTALLATION OF REPLACEMENT PARTS THERETO.

Parts List and Assembly Diagram

ITEM	DESCRIPTION	QTY
1	Suction Hose	1
2	Connecting Hose	1
2-1	O-Ring	1
2-2	Connecting Nut	1
3	Castor	3
4	1/4" Nut	6
5	1/4" x 3/4" Screw	3
6	1/4" x 5/8" Screw	6
7	1/2" Valve	1
8	Leg	3
9	Connecting Plate	3
10	Vacuum Body with Air Switch Assembly	1
11	Tank	1
12	Tank Cover	1
13	Filter	1
14	Screen	1
15	Screen Cover	1
16	Cover Nut	1
17	Sand Buffering Device	1



NOTE: Some parts are listed and shown for illustration purposes only and are not available individually as replacement parts.