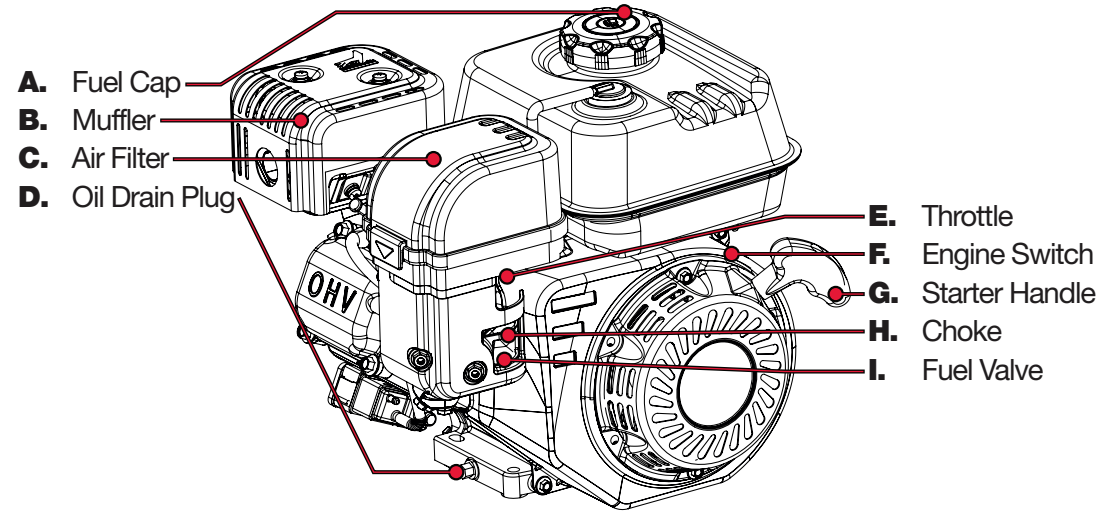


# PREDATOR™ E N G I N E S

## QUICK START GUIDE

Horizontal Shaft Gas Engine Item: 60363

### Engine Components



For technical questions, please call 1-800-520-0882.  
Visit our website at: <http://www.harborfreight.com>  
Email our technical support at: [predator@harborfreight.com](mailto:predator@harborfreight.com)

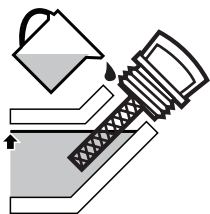
**READ AND UNDERSTAND USER MANUAL BEFORE USE.**

**READ AND UNDERSTAND USER MANUAL BEFORE USE.**

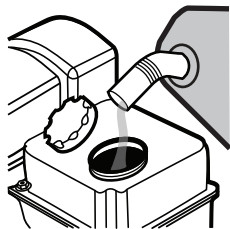


## Add Fluids

Check oil and fuel levels  
If needed, fill as shown below



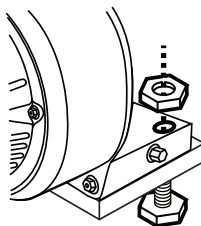
Add oil to engine  
crankcase



Add fuel to within  
1" of the rim of the tank

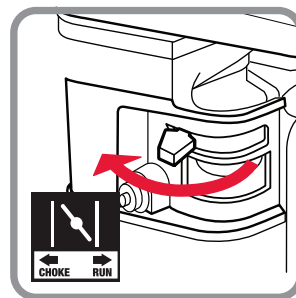
**Note:** Use regular Unleaded 87 Octane.  
Engine not designed for E85 Ethanol blend.

## Assembly

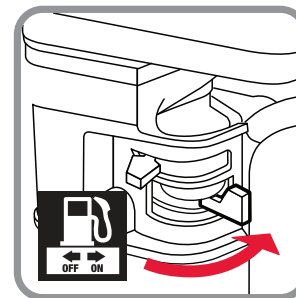


Mount the engine  
securely in place

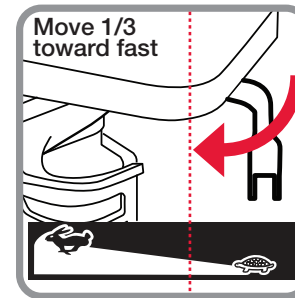
## Starting Procedure



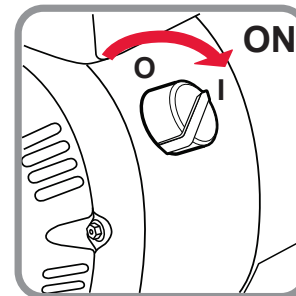
1. CLOSE CHOKE



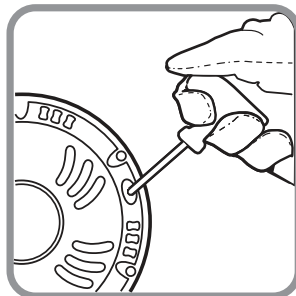
2. OPEN FUEL VALVE



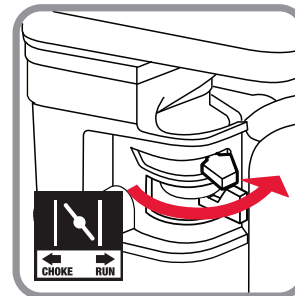
3. ADJUST THROTTLE



4. SWITCH ON



5. PULL START



6. CHOKE TO RUN

**IMPORTANT:** Breaking-in the engine will help to ensure proper equipment and engine performance. The operational break-in period will last about 3 hours of use. During this period: • Do not apply a heavy load. • Do not operate the engine at its maximum speed.

**PREDATOR™**  
E N G I N E S