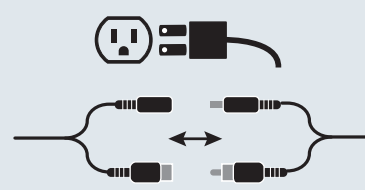


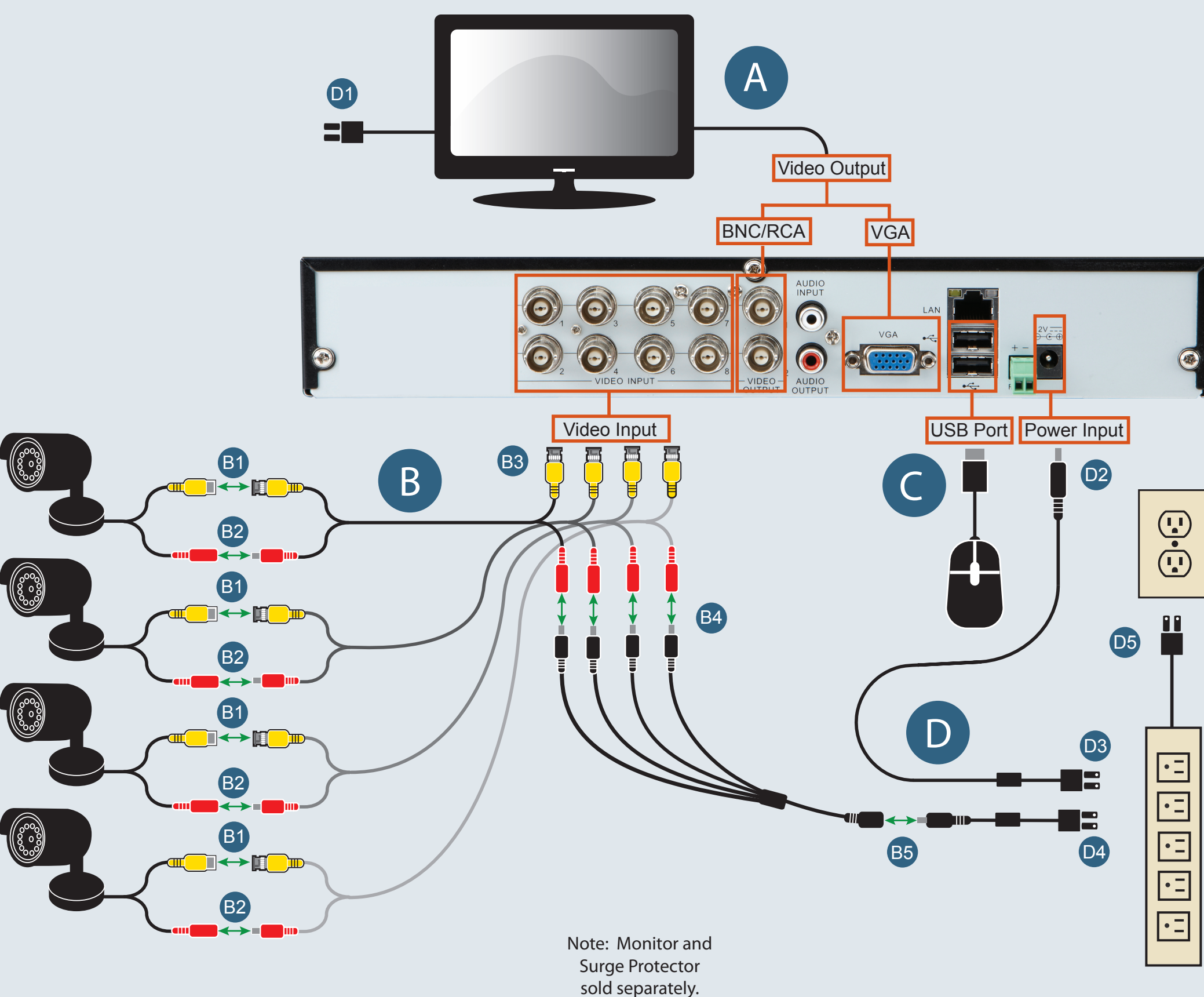
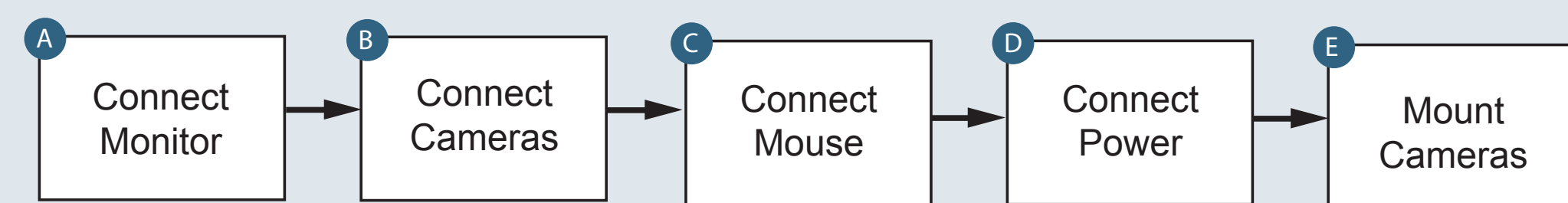
## INITIAL SETUP Physical Connections

See Manual - Page 12



**WARNING**  
This Quick Start Guide is not intended to replace the Owner's Manual & Safety Instructions. To prevent serious injury, read all safety warnings and instructions therein to ensure proper usage.

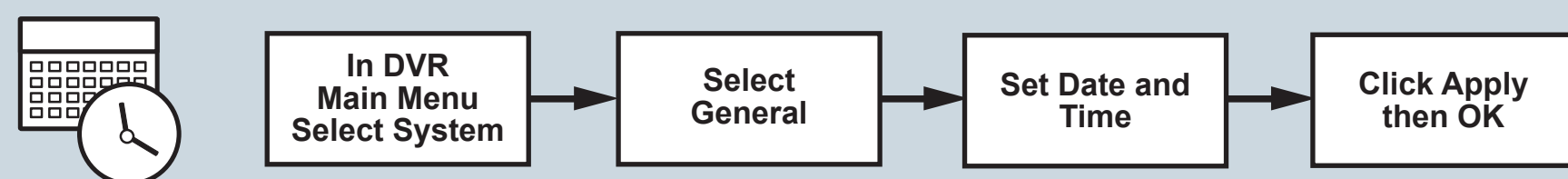
1



## Set Date and Time

See Manual - Page 17

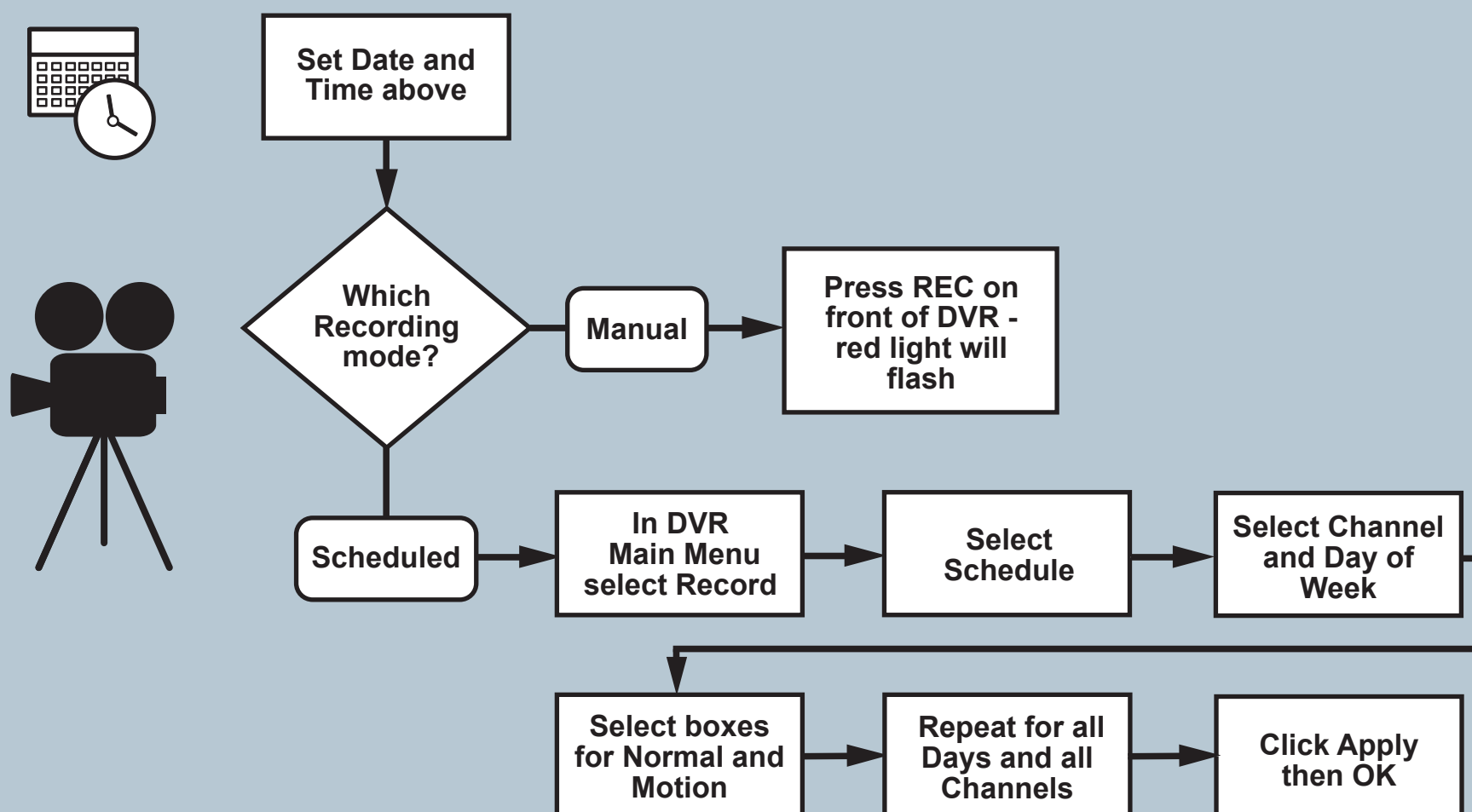
2



## Set Recording Mode

See Manual - Page 18

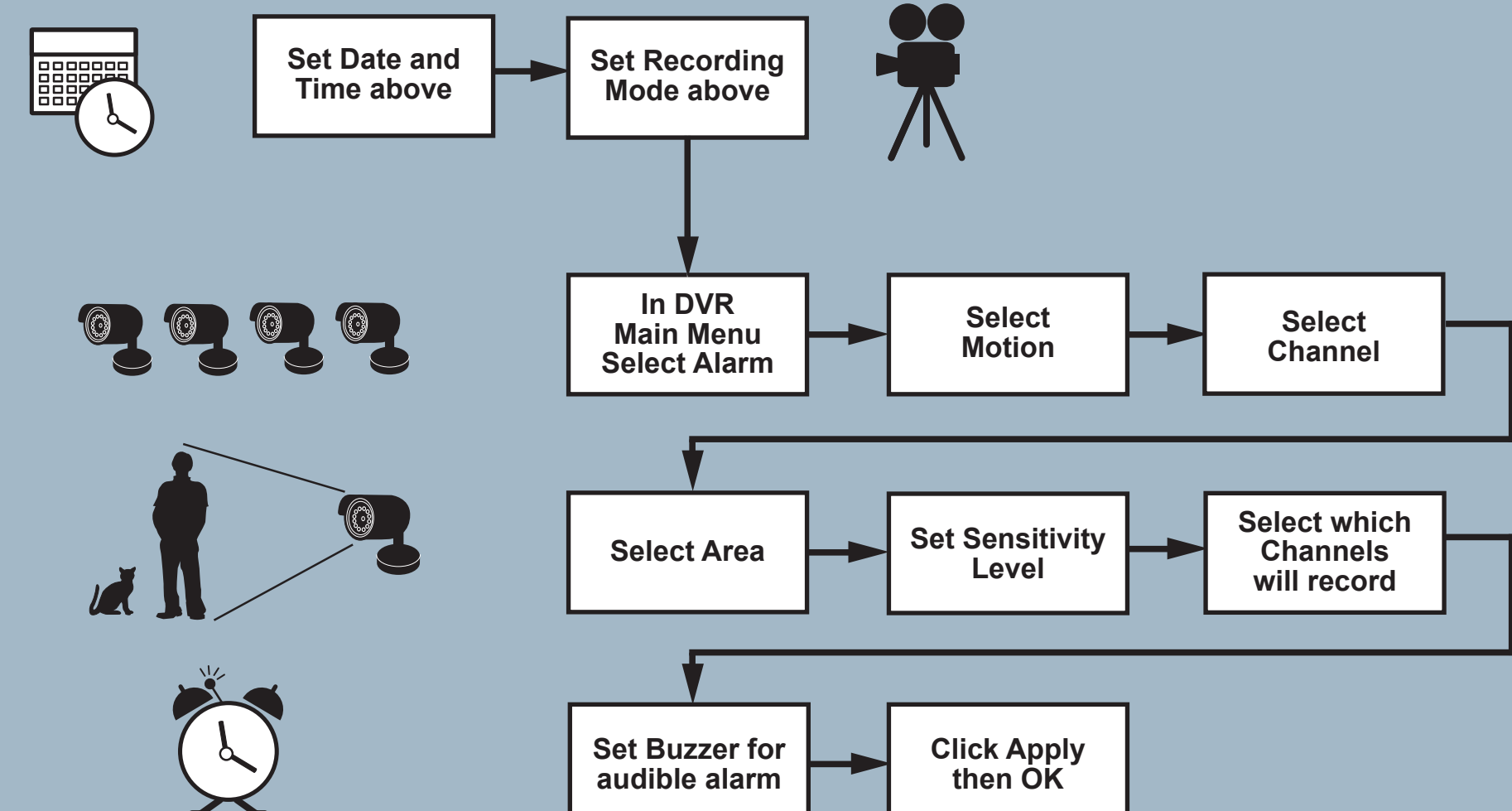
3



## Motion Detection Settings

See Manual - Page 19

4



8-Channel

# Surveillance DVR

with 4 Cameras & Mobile Monitoring Capabilities

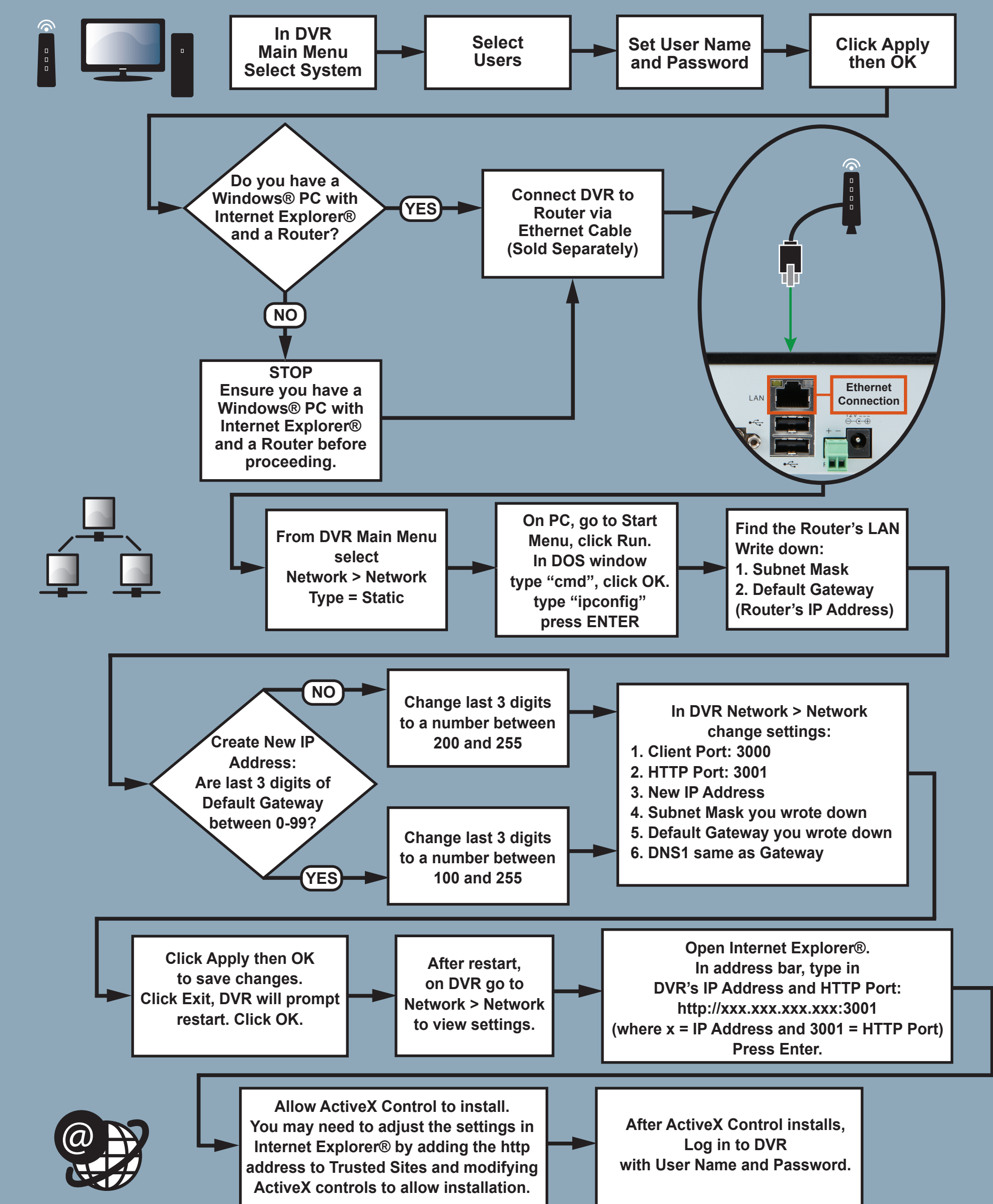
Bunker Hill Security

## Quick Start Guide

Item 61229

## Local Area Network (LAN) Setup

See Manual - Page 28



## Wide Area Network (WAN) Setup FOR ADVANCED USERS Internet Setup for Remote Use

See Manual - Page 30

