

PITTSBURGH

ADJUSTABLE CARPET STRETCHER

Model 93152

ASSEMBLY AND OPERATING INSTRUCTIONS



Visit our website at: <http://www.harborfreight.com>



Read this material before using this product.

Failure to do so can result in serious injury.

SAVE THIS MANUAL.

Copyright© 2005 by Harbor Freight Tools®. All rights reserved. No portion of this manual or any artwork contained herein may be reproduced in any shape or form without the express written consent of Harbor Freight Tools. Diagrams within this manual may not be drawn proportionally. Due to continuing improvements, actual product may differ slightly from the product described herein. Tools required for assembly and service may not be included.

For technical questions or replacement parts, please call 1-800-444-3353.

Revised Manual 10j

PRODUCT SPECIFICATIONS

Adjustable Length	17-3/4"-59-1/2"
Head Dimensions	5-3/8"L x 4-3/8"W x 2-1/4"H
Number of Head Teeth	16
Head Teeth Adjustments	7 Depth Settings
Extension Tubes	Qty 2 @ 13"L
Extension Tubes	Qty 2 @ 11"L
Unit Net Weight	9.1 Pounds

UNPACKING

When unpacking, check to make sure all the parts listed in the **Parts List on page 7** are included. If any parts are missing or broken, please call Harbor Freight Tools at the number shown on the cover of this manual as soon as possible.

SAVE THIS MANUAL

You will need this manual for the safety warnings and precautions, assembly, operating, inspection, maintenance and cleaning procedures, parts list and assembly diagram. Keep your invoice with this manual. Write the invoice number on the inside of the front cover. Keep this manual and invoice in a safe and dry place for future reference.

▲WARNING

READ AND UNDERSTAND ALL INSTRUCTIONS
Failure to follow all instructions listed in the following
pages may result in serious injury.
SAVE THESE INSTRUCTIONS

▲WARNING

The warnings, precautions, and instructions discussed in this manual cannot cover all possible conditions and situations that may occur.
The operator must understand that common sense and caution are factors, which cannot be built into this product, but must be supplied by the operator.

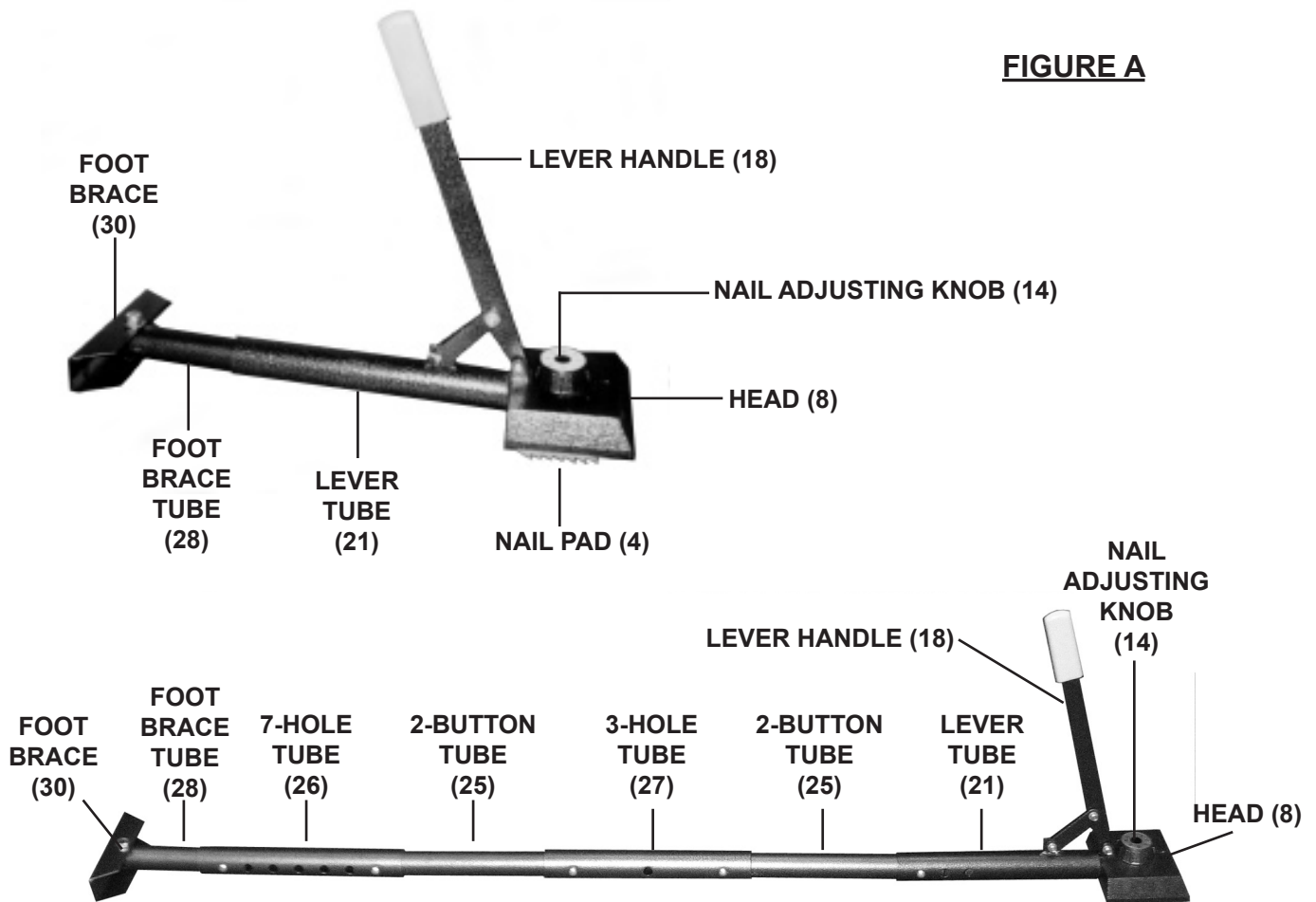
GENERAL SAFETY PRECAUTIONS

1. **Avoid eye injury.** Wear ANSI approved safety goggles when assembling and using this product.
2. **Dress properly.** Do not wear loose clothing or jewelry as they can be caught in the moving parts of the Carpet Stretcher. Protective, electrically non-conductive clothes and non-skid footwear are recommended when working. Wear restrictive hair covering to contain long hair. When laying carpet, protect your knees by wearing knee pads.
3. **Stay alert. Watch what you are doing, and use common sense when assembling this product.** Do not assemble and use this product while tired or under the influence of drugs, alcohol, or medication. A moment of inattention while assembling and using this product may result in serious personal injury.
4. **Keep children away.** Children must never be allowed in the work area. Do not let children handle the Carpet Stretcher.
5. **Store idle equipment.** When not in use replace Head Protective Cover. The Carpet Stretcher must be stored in a dry location to inhibit rust. Always lock up tools and keep out of reach of children.
6. **If damaged, have the Carpet Stretcher serviced immediately.** Check for loose components, inoperative spring loaded Lock Buttons and any other condition that may affect its proper operation. Repair must be performed only by qualified repair personnel. Service or maintenance performed by unqualified personnel could result in injury.
7. **Use only accessories that are recommended by the manufacturer for your model.** Accessories that may be suitable for one product may become hazardous when used on another product.
8. **If not used properly, this tool can cause damage to the carpet. Harbor Freight Tools is not responsible for damage to any carpet while using this product.** Care must be taken *by the operator* not to damage a carpet.
9. **Use the right product for the job.** There are certain applications for which this product was designed. Do not use small equipment, tools, or attachments to do the work of larger industrial equipment, tools, or attachments. Do not use this product for a purpose for which it was not intended.
10. **Maintain labels and nameplates on the Carpet Stretcher.** These carry important information. If unreadable or missing, contact Harbor Freight Tools for a replacement.

ASSEMBLY INSTRUCTIONS

1. The Carpet Stretcher may be adjusted from 17-3/4" long up to 59-1/2" long, depending on the length of your application.
2. To adjust the Carpet Stretcher for longer lengths, remove the Foot Brace Tube (28) and Foot Brace (30) assembly from the tool.
3. Attach the remaining Tubes (26, 27) to the tool. Then, re-attach the Foot Brace Tube (28) and Foot Brace (30) assembly.
4. If necessary, depress the Lock Buttons on the Tubes and slide the Tubes forward or backward to more accurately adjust the length. When finished, check to make sure the Lock Buttons are securely in place in the adjusting holes of the Tubes. **(See Figure A.)**

FIGURE A



NOTE: For additional information regarding the parts mentioned in this manual, refer to the **Assembly Diagram** on page 7.

CAUTION

If not used properly, this tool can cause damage to the carpet. Harbor Freight Tools is not responsible for damage to any carpet resulting from use of this product.

Care must be taken by the operator not to damage carpet.

OPERATING INSTRUCTIONS

1. Set the assembled Carpet Stretcher on the floor with its Foot Brace (30) firmly resting against a solid surface (i.e., wall, wallboard, floor plate, etc.).
(See Figure A.)
2. If necessary, re-adjust the length of the Carpet Stretcher to the proper length of your application. In most cases you will also need to use an extension such as a 2 x 4 stud for bracing against a wall while using the Carpet Stretcher.
(See Photo on Page 6.)
3. Remove the protective Cover (1) from the bottom of the Head (8) of the Carpet Stretcher. **(See Assembly Diagram.)**
4. Turn the Nail Adjusting Knob (14) to the proper length for the carpet pile with which you are working. **NOTE:** The Nail Adjusting Knob (14) has 7 settings. Lower numbers represent shorter Nail extensions, higher numbers represent longer Nail extensions. Turn the Nail Adjusting Knob (14) clockwise to increase the Nail length and counterclockwise to decrease the Nail length.
(See Figure A.)
5. **IMPORTANT:** The Nail length must allow the Nails to pass through the top of the carpet (pile) and grip into the cloth backing. The Nails must not go through the backing into the pad or they will damage the pad.
6. Position the Head (8) of the Carpet Stretcher next to the tack strips with the Nails properly inserted through the carpet and into the backing. Then, lower the Lever Handle (18) to move the carpet forward onto the tack strips. Continue along the perimeter of the room. **(See Figure A.)**
7. When finished, use the Nail Adjusting Knob (14) to fully retract the Nails.
(See Figure A.)
8. Attach the protective Cover (1) to the Head (8). Then, store the Carpet Stretcher in a clean, dry, safe location out of reach of children and other unauthorized people.

It is recommended that this work be finished by using a Knee Kickers Carpet Installer ITEM 41838 and Knee Kickers ITEM 2692, available from Harbor Freight Tools®.



When extension support is required, we recommend the use of a 2 x 4 stud as shown in the photo above.

INSPECTION, MAINTENANCE, AND CLEANING

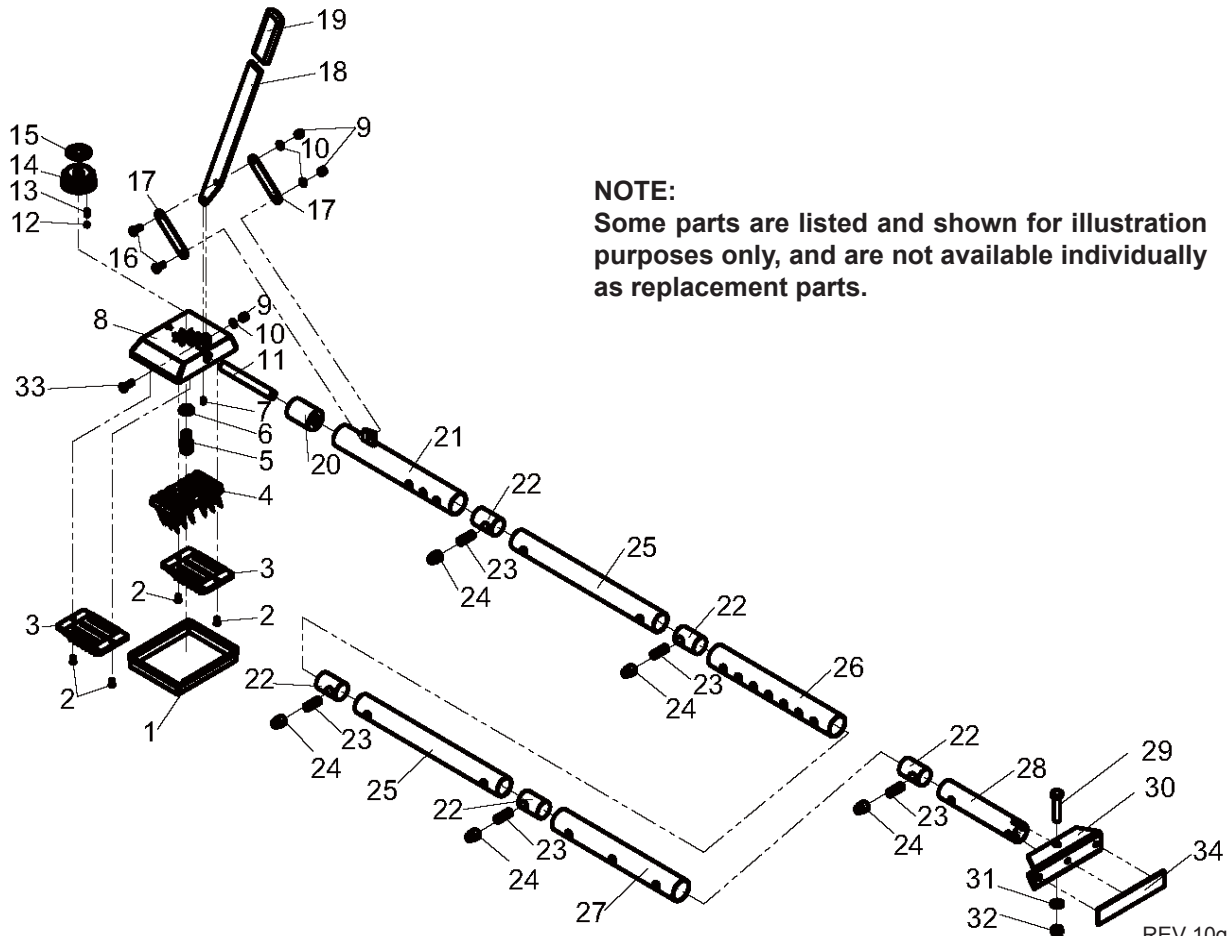
1. **Before each use**, inspect the general condition of the Carpet Stretcher. Check for broken, cracked, loose or missing parts, and any condition that may affect the proper operation of the product. If a problem occurs, have the problem corrected before further use. **Do not use damaged equipment.**
2. **When cleaning**, use a clean cloth with a mild detergent. Do not use solvents. Make sure to remove any dirt and debris from the Nails and Nail Pad (4) of the Carpet Stretcher. **(See Figure A)**
3. **CAUTION!** All maintenance, service, or repairs not listed in this manual are only to be attempted by a qualified service technician.

PLEASE READ THE FOLLOWING CAREFULLY

THE MANUFACTURER AND/OR DISTRIBUTOR HAS PROVIDED THE PARTS LIST AND ASSEMBLY DIAGRAM IN THIS MANUAL AS A REFERENCE TOOL ONLY. NEITHER THE MANUFACTURER OR DISTRIBUTOR MAKES ANY REPRESENTATION OR WARRANTY OF ANY KIND TO THE BUYER THAT HE OR SHE IS QUALIFIED TO MAKE ANY REPAIRS TO THE PRODUCT, OR THAT HE OR SHE IS QUALIFIED TO REPLACE ANY PARTS OF THE PRODUCT. IN FACT, THE MANUFACTURER AND/OR DISTRIBUTOR EXPRESSLY STATES THAT ALL REPAIRS AND PARTS REPLACEMENTS SHOULD BE UNDERTAKEN BY CERTIFIED AND LICENSED TECHNICIANS, AND NOT BY THE BUYER. THE BUYER ASSUMES ALL RISK AND LIABILITY ARISING OUT OF HIS OR HER REPAIRS TO THE ORIGINAL PRODUCT OR REPLACEMENT PARTS THERETO, OR ARISING OUT OF HIS OR HER INSTALLATION OF REPLACEMENT PARTS THERETO.

PARTS LIST & ASSEMBLY DIAGRAM

Part #	Description	Qty	Part #	Description	Qty
1	Cover	1	17	Connection Plate	2
2	Screw (M5 x 10)	4	18	Lever Handle	1
3	Grip Pad	2	19	Handle Grip	1
4	Nail Pad	1	20	Caulker	1
5	Bolt Shaft (M18)	1	21	Lever Tube	1
6	Bushing	1	22	Caulker	5
7	Screw (M5 x 8)	1	23	Spring	5
8	Head	1	24	Push Pin	5
9	Nut (M6)	3	25	2-Hole Tube	2
10	Washer (6mm)	3	26	7-Hole Tube	1
11	Slide Shaft	1	27	3-Hole Tube	1
12	Steel Ball	1	28	Foot Brace Tube	1
13	Spring	1	29	Bolt (M10 x 55)	1
14	Nail Adjusting Knob	1	30	Foot Brace	1
15	Knob Dial	1	31	Washer (10mm)	1
16	Bolt (M6 x 16)	2	32	Nut (M10)	1
			33	Bolt (M6x20)	1
			34	Rubber Spacer	1



NOTE:
Some parts are listed and shown for illustration purposes only, and are not available individually as replacement parts.