

Owner's Manual & Safety Instructions

Save This Manual Keep this manual for the safety warnings and precautions, assembly, operating, inspection, maintenance and cleaning procedures. Write the product's serial number in the back of the manual near the assembly diagram (or month and year of purchase if product has no number). Keep this manual and the receipt in a safe and dry place for future reference.

ALL-TERRAIN TRICYCLE



ITEM 60652

Visit our website at: <http://www.harborfreight.com>
Email our technical support at: tech@harborfreight.com

When unpacking, make sure that the product is intact and undamaged. If any parts are missing or broken, please call 1-800-444-3353 as soon as possible.

⚠ WARNING

**Read this material before using this product.
Failure to do so can result in serious injury.
SAVE THIS MANUAL.**

Copyright© 2012 by Harbor Freight Tools®. All rights reserved.
No portion of this manual or any artwork contained herein may be reproduced in any shape or form without the express written consent of Harbor Freight Tools. Diagrams within this manual may not be drawn proportionally. Due to continuing improvements, actual product may differ slightly from the product described herein. Tools required for assembly and service may not be included.

Specifications

Tricycle Height	26"
Front Wheel	5/8" Axle Diameter, 13" Pneumatic Knobby Tire
Back Wheels	5/8" Axle Diameter, 10" Pneumatic Knobby Tire
Age Range	5 and up
Weight Capacity	150 lb.

IMPORTANT SAFETY INFORMATION

WARNING

Read all safety warnings and instructions.

Failure to follow the warnings and instructions may result in serious injury.

Save all warnings and instructions for future reference.

- AGES 5 AND UP ONLY.**
Do not allow younger children to use.
- WEAR PROPER SAFETY HELMET AND COMPLETE SAFETY GEAR WHEN RIDING.**
Responsible adult must supervise during use.
Use as intended only.
Rider must stay seated at all times during use.
Do not allow more than one child to play with tricycle at once.
- Do not use in unstable or dangerous area.
Tipping over can cause injury.
Do not use in areas where vehicles may be present, such as parking areas, driveways, or roads.
- Wear ANSI-approved safety goggles and work gloves during assembly.
- Read manual before assembly and/or use.
- Do not exceed 150 lb. capacity.
- Inspect before every use;
do not use if parts loose or damaged.
Check and tighten hardware periodically.
- Assemble completely according to instructions before allowing a child to play with this product.

Assembly Instructions

1. Examine Handlebar (12) assembly to make sure that rail on Insert (17) is aligned with and fits into slot on bottom of Handlebars, as shown to the right.



2. Insert Handlebar assembly into Frame (8) as shown in Figure A.

Note: Although they are illustrated separately, the Bolt (13) and Insert (17) should already be part of the Handlebar assembly at this point.

3. Align Handlebars carefully with Front Wheel (1) while tightening the Bolt (13) at the top center of them. If needed, have an assistant hold the Handlebars straight while tightening this Bolt.

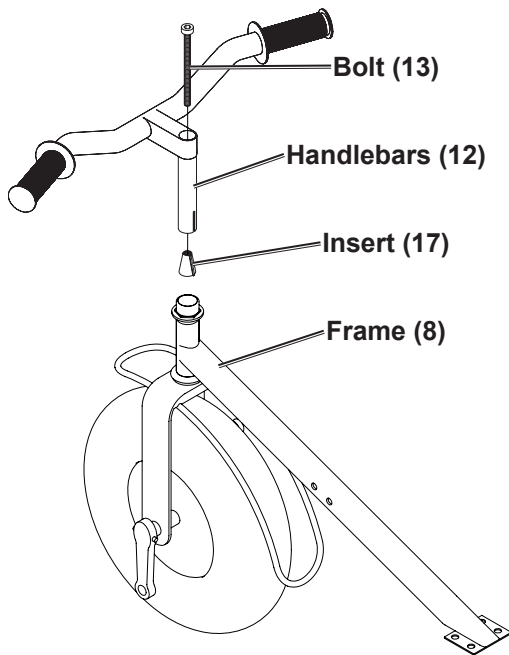


Figure A: Handlebar Installation

4. Thread the left Pedal (5a) onto the crank clockwise. Thread the right Pedal (6a) onto the crank counterclockwise.

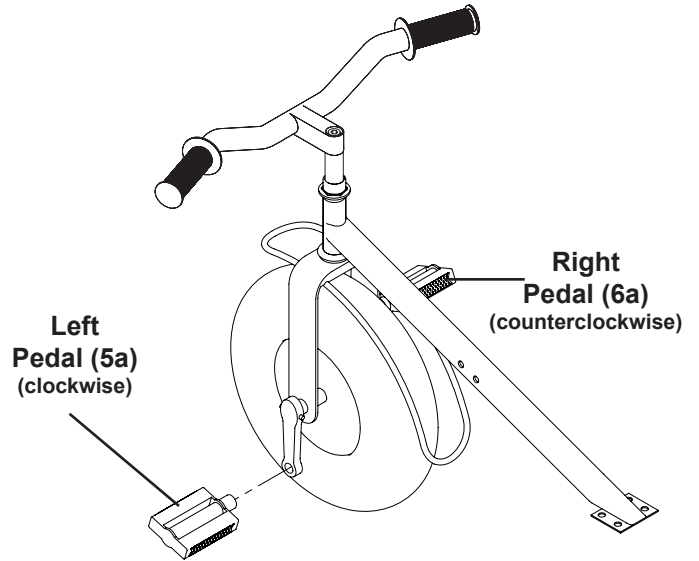


Figure B: Pedal Installation

5. Use 4 Bolts and Nuts to attach the Rear Frame (10) to the Frame (8).

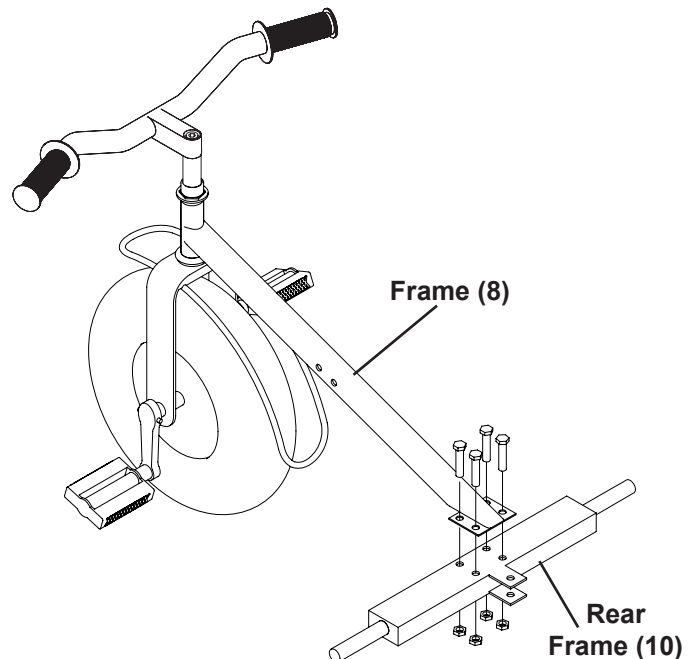


Figure C: Rear Frame Installation

6. Bolt the Seat (9) to the Frame (8) at the desired height using two bolts and nuts.

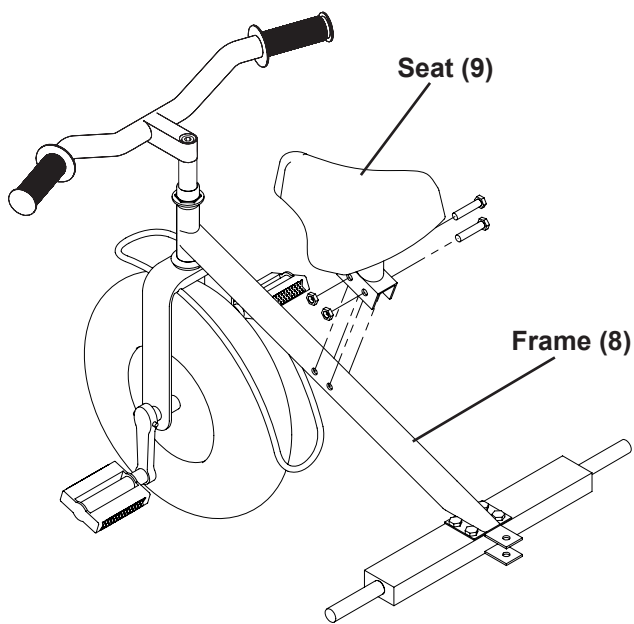


Figure D: Seat Installation

7. Place a Flat Washer on the rear axle portion of the Rear Frame (10). Next place the Rear Wheel (11) on the axle (valve stem facing outward). Add another Flat Washer and secure with an axle cap.

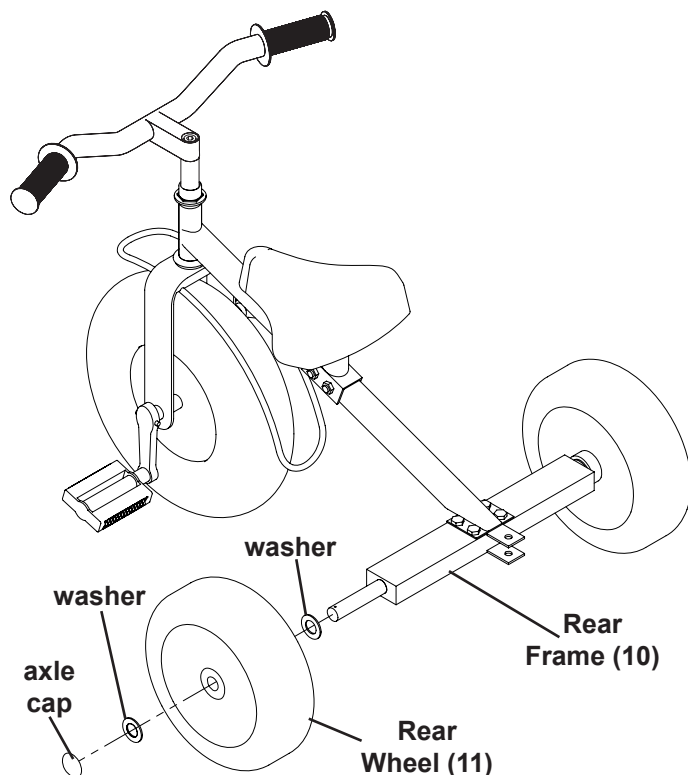


Figure E: Wheel Installation

8. Test the Tricycle by checking all bolts and connections for tightness. Roll the Tricycle to check for proper wheel operation.

Operation

1. Inspect before every use; do not use if parts loose or damaged. Check and tighten hardware periodically.
2. Do not use in unstable or dangerous area. Tipping over can cause injury. Do not use in areas where vehicles may be present, such as parking areas, driveways, or roads.
3. **AGES 5 AND UP ONLY.** Do not allow younger children to use.
4. **WEAR PROPER SAFETY HELMET AND COMPLETE SAFETY GEAR WHEN RIDING.**
5. Responsible adult must supervise during use.
6. Use as intended only.
7. Rider must stay seated at all times during use.
8. Do not allow more than one child to play with tricycle at once.
9. After use, clean and store indoors.



Maintenance

1. Periodically check tire inflation (maximum tire inflation is: 30 PSI for rear tires, 35 PSI for front tire).
2. Periodically lubricate wheel axles.
3. Check and tighten hardware periodically.

Seat Adjustment

1. Take off the nuts and bolts holding the Seat bracket.
2. Move the bracket to the desired position while lining up the holes with the Main Frame holes.
3. Re-insert the bolts and attach the nuts.

PLEASE READ THE FOLLOWING CAREFULLY

THE MANUFACTURER AND/OR DISTRIBUTOR HAS PROVIDED THE PARTS LIST AND ASSEMBLY DIAGRAM IN THIS DOCUMENT AS A REFERENCE TOOL ONLY. NEITHER THE MANUFACTURER OR DISTRIBUTOR MAKES ANY REPRESENTATION OR WARRANTY OF ANY KIND TO THE BUYER THAT HE OR SHE IS QUALIFIED TO MAKE ANY REPAIRS TO THE PRODUCT, OR THAT HE OR SHE IS QUALIFIED TO REPLACE ANY PARTS OF THE PRODUCT. IN FACT, THE MANUFACTURER AND/OR DISTRIBUTOR EXPRESSLY STATES THAT ALL REPAIRS AND PARTS REPLACEMENTS SHOULD BE UNDERTAKEN BY CERTIFIED AND LICENSED TECHNICIANS, AND NOT BY THE BUYER. THE BUYER ASSUMES ALL RISK AND LIABILITY ARISING OUT OF HIS OR HER REPAIRS TO THE ORIGINAL PRODUCT OR REPLACEMENT PARTS THERETO, OR ARISING OUT OF HIS OR HER INSTALLATION OF REPLACEMENT PARTS THERETO.

Parts List and Diagram

Parts List

Part	Description	Qty
1	Front Wheel	1
2	Front Fork	1
3	Bearing Head Set	1
4	Front Wheel Axle Shaft	1
5a	Pedal (Left side, normal threads)	1
5b	Crank (Left side, normal threads)	1
6a	Pedal (Right side, reverse threads)	1
6b	Crank (Right side, reverse threads)	1
7a	Crank Nut	2
7b	Crank Pin	2

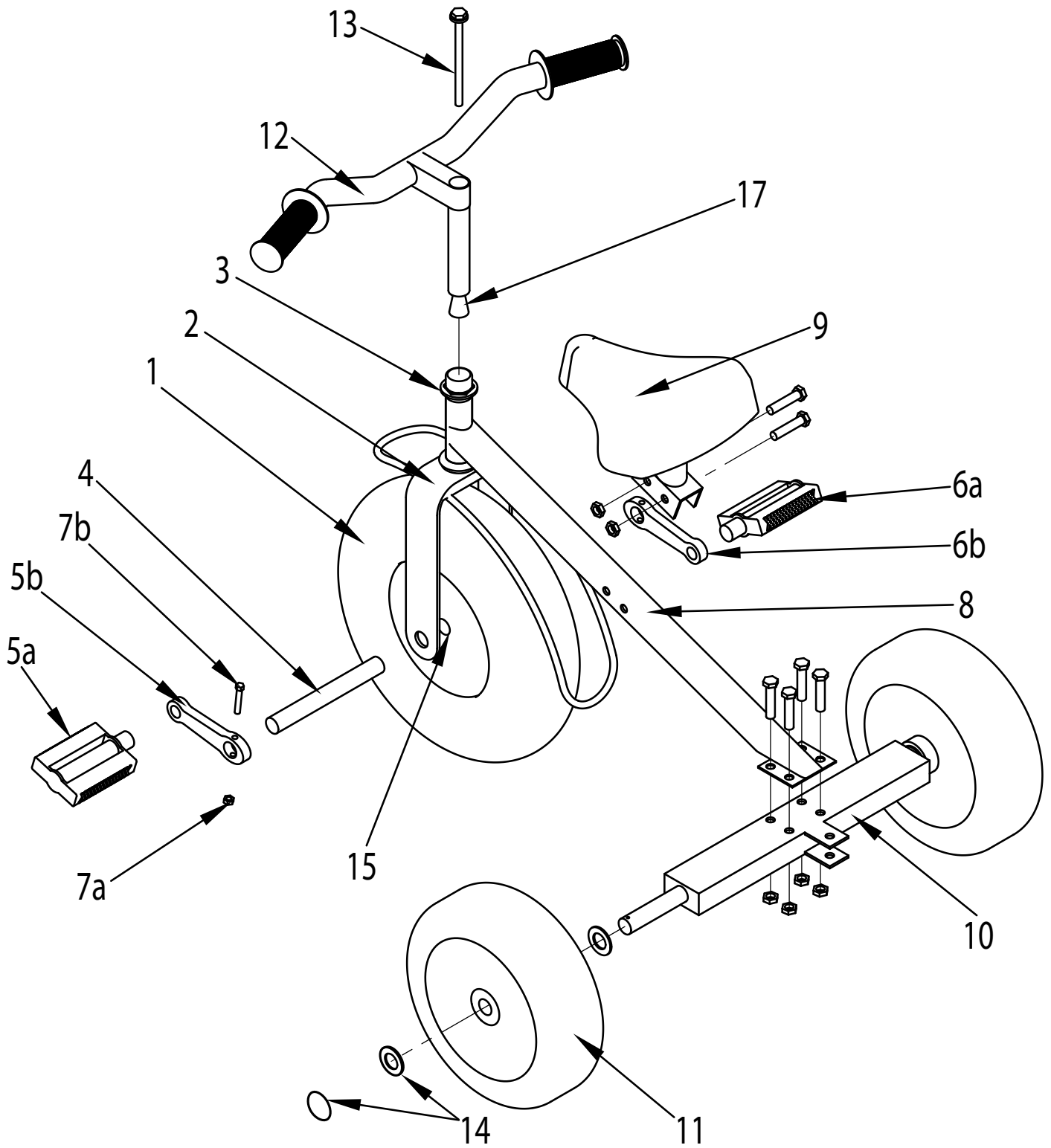
Part	Description	Qty
8	Frame	1
9	Seat	1
10	Rear Frame	1
11	Rear Wheel	2
12	Handle Bar	1
13	Socket Head Cap Screw & Nut	1
14	Assembly Hardware	1 set
15	Bushing (Front Wheel)	2
16	Bearing (not shown, inside Rear Wheel)	2
17	Insert	1

Record Product's Serial Number Here: _____

Note: If product has no serial number, record month and year of purchase instead.

Note: Some parts are listed and shown for illustration purposes only and are not available individually as replacement parts.

Assembly Diagram



Limited 90 Day Warranty

Harbor Freight Tools Co. makes every effort to assure that its products meet high quality and durability standards, and warrants to the original purchaser that this product is free from defects in materials and workmanship for the period of 90 days from the date of purchase. This warranty does not apply to damage due directly or indirectly, to misuse, abuse, negligence or accidents, repairs or alterations outside our facilities, criminal activity, improper installation, normal wear and tear, or to lack of maintenance. We shall in no event be liable for death, injuries to persons or property, or for incidental, contingent, special or consequential damages arising from the use of our product. Some states do not allow the exclusion or limitation of incidental or consequential damages, so the above limitation of exclusion may not apply to you. THIS WARRANTY IS EXPRESSLY IN LIEU OF ALL OTHER WARRANTIES, EXPRESS OR IMPLIED, INCLUDING THE WARRANTIES OF MERCHANTABILITY AND FITNESS.

To take advantage of this warranty, the product or part must be returned to us with transportation charges prepaid. Proof of purchase date and an explanation of the complaint must accompany the merchandise. If our inspection verifies the defect, we will either repair or replace the product at our election or we may elect to refund the purchase price if we cannot readily and quickly provide you with a replacement. We will return repaired products at our expense, but if we determine there is no defect, or that the defect resulted from causes not within the scope of our warranty, then you must bear the cost of returning the product.

This warranty gives you specific legal rights and you may also have other rights which vary from state to state.