

Owner's Manual & Safety Instructions

Save This Manual Keep this manual for the safety warnings and precautions, assembly, operating, inspection, maintenance and cleaning procedures. Write the product's serial number in the back of the manual near the assembly diagram (or month and year of purchase if product has no number). Keep this manual and the receipt in a safe and dry place for future reference.

BIGFOOT PANEL WAGON



ITEM 62375

REV 14g

Visit our website at: <http://www.harborfreight.com>
Email our technical support at: productsupport@harborfreight.com

When unpacking, make sure that the product is intact and undamaged. If any parts are missing or broken, please call 1-888-866-5797 as soon as possible.

Copyright© 2014 by Harbor Freight Tools®. All rights reserved.
No portion of this manual or any artwork contained herein may be reproduced in any shape or form without the express written consent of Harbor Freight Tools. Diagrams within this manual may not be drawn proportionally. Due to continuing improvements, actual product may differ slightly from the product described herein.
Tools required for assembly and service may not be included.

⚠WARNING

**Read this material before using this product.
Failure to do so can result in serious injury.
SAVE THIS MANUAL.**

Specifications

Tires	10" Pneumatic
Age Range	5 and up
Weight Capacity	300 lb
Deck Size	32" x 13-3/4" x 5-1/2"
Inside Dimensions	29-7/8" x 11-3/4" x 4"
Replacement Wheels	Harbor Freight Item 30900

IMPORTANT SAFETY INFORMATION

Assembly Precautions

1. Assemble only according to these instructions. Improper assembly can create hazards.
2. Wear ANSI-approved safety goggles and heavy-duty work gloves during assembly.
3. Keep assembly area clean and well lit.
4. Keep bystanders out of the area during assembly.
5. Do not assemble when tired or when under the influence of alcohol, drugs or medication.
6. Weight capacity and other product capabilities apply to properly and completely assembled product only.

Use Precautions

1. **AGES 5 AND UP ONLY.**
Do not allow younger children to use.
2. **WEAR PROPER SAFETY HELMET AND COMPLETE SAFETY GEAR WHEN RIDING.**
3. Responsible adult must supervise during use.
4. Rider must stay seated at all times during use.
5. Do not allow more than one child to play with wagon at once.
6. Do not use in unstable or dangerous area. Tipping over can cause injury.
7. Do not use in areas where vehicles may be present, such as parking areas, driveways, or roads.
8. Assemble completely according to instructions before allowing a child to play with this product.
9. Use as intended only.
10. Inspect before every use; do not use if parts are loose or damaged.
11. Do not exceed listed weight capacity.
Be aware of dynamic loading!
Sudden load movement may briefly create excess load causing product failure.
12. Maintain product labels and nameplates. These carry important safety information. If unreadable or missing, contact Harbor Freight Tools for a replacement.

Assembly Instructions



Read the **ENTIRE IMPORTANT SAFETY INFORMATION** section at the beginning of this document including all text under subheadings therein before set up or use of this product.

Note: For additional information regarding the parts listed in the following pages, refer to the Assembly Diagram.

Note: Do not overtighten hardware.

1. Bolt the Front Axle Support (6) to the wagon Bed (1) with Bolts (14), Washers (15), and Lock Nuts (16).
2. Connect the front axles with the Short Support Braces (7). Fasten with Bolts (18), Washers (15) and Lock Nuts (16).
3. As shown in Figure A, push one side of the Yoke (8) onto the center stud of the Front Axle Support (6) and fasten it with a Washer (23) and Lock Pin (24).
4. Attach the other side of the Yoke to the Front Axle Support, the Short Support Brace and the Long Support Brace (25) using Bolts (17), Washer (15) and Lock Nut (16). See Figure B.

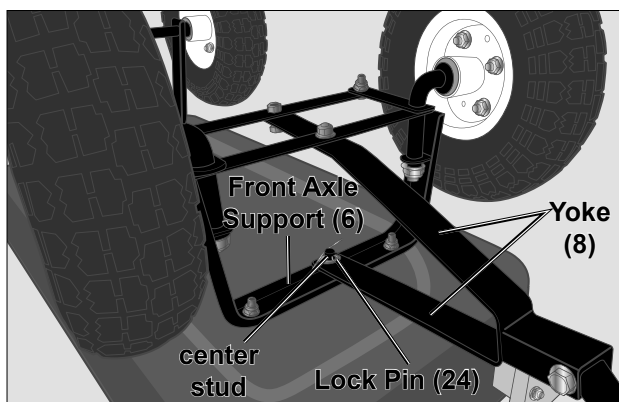


Figure A

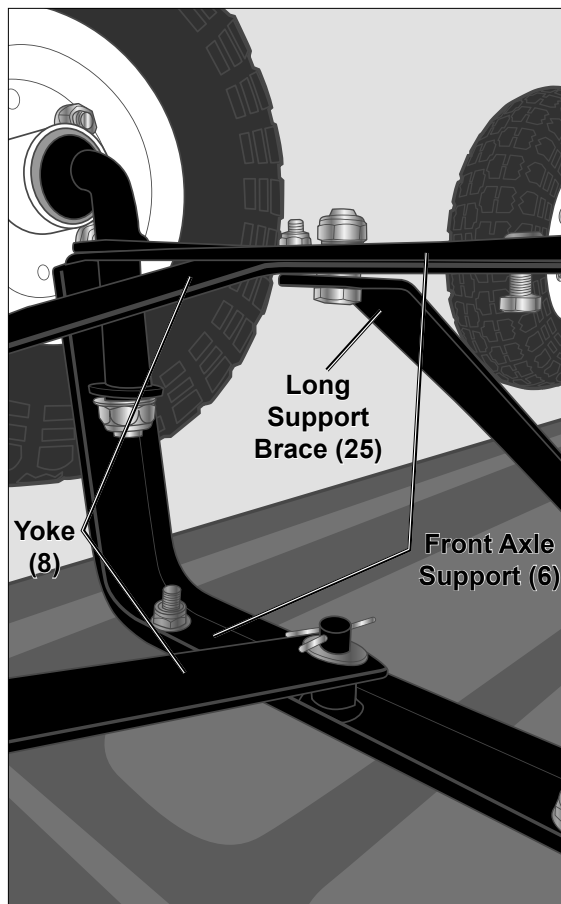


Figure B

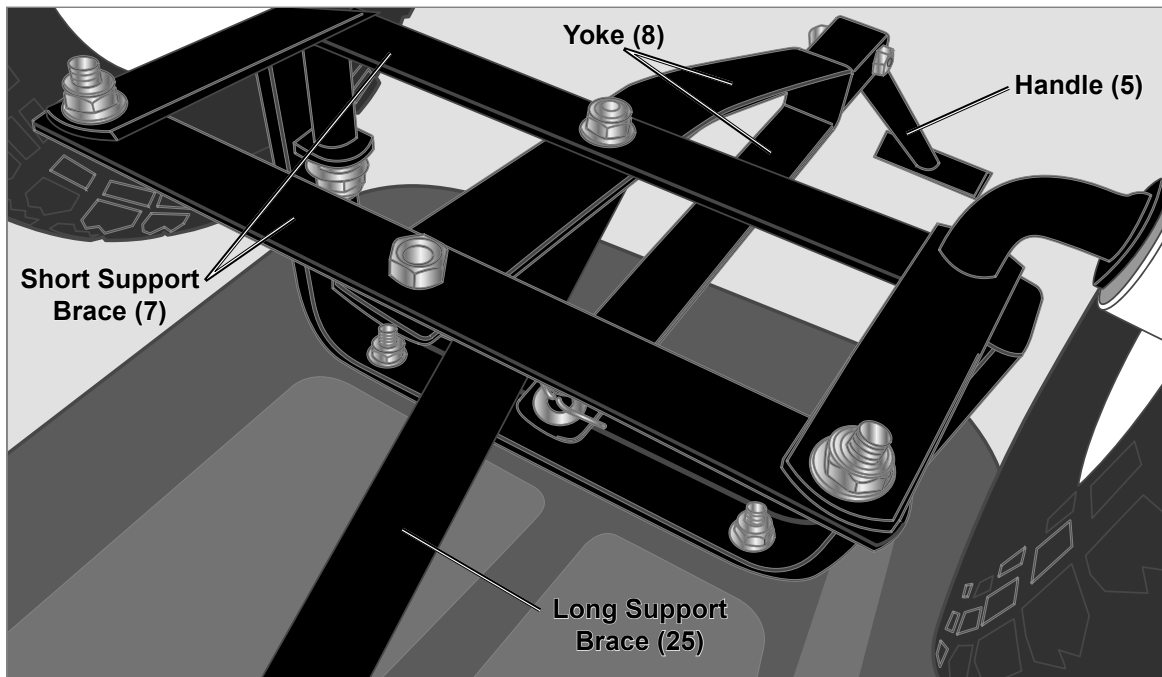


Figure C

5. Bolt the Handle (5) to the Yoke using Bolts (19), Washers (15) and Lock Nuts (16). See Figure C.
 6. Attach the Rear Support (9) to the wagon Bed (1) using Bolts (14), Washers (15) and Lock Nuts (16).
 7. Attach the Long Support Brace (25) to the Rear Support using Bolts (17), Washers (15) and Lock Nuts (16), and to the wagon Bed (1) using Bolts (14), Washers (15) and Lock Nuts (16).
 8. For each Wheel (10), slide the wheel onto the axle with the valve stem facing out, then secure with Washers (22), Spring Washers (20) and Lock Nuts (21)
 9. Turn the cart upright.
 10. Attach **one** of the Long Side Panels (2) to the wagon with three Bolts (11) going through both the Bed and each vertical slat. The top of the Bolts should be on the inside of the Bed. Tighten each into place with a Washer (12) then a Lock Nut (13).
 11. Attach the Short Rear Panel (3) to the wagon with two Bolts (11) going through the Bed and each vertical slat. Tighten into place with a Washer and Lock Nut as previously described.
- Note:** The Short Front Panel (4) is the one with a downward curved front slat.
12. Attach the second Long Side Panel (2) . Attach the Short Front Panel (4) with two Bolts (11). Tighten into place with a Washer and Lock Nut as previously described.

Parts List and Diagram

Parts List

Part	Description	Qty
1	Bed	1
2	Side Panel	2
3	Back Panel	1
4	Front Panel	1
5	Handle	1
6	Front Axle Support	1
7	Short Support Brace	1
8	Yoke	1
9	Rear Axle Support	1
10	Wheel	4
11	Bolt M5*45	10
12	Washer Ø5	10
13	Lock Nut M5	10

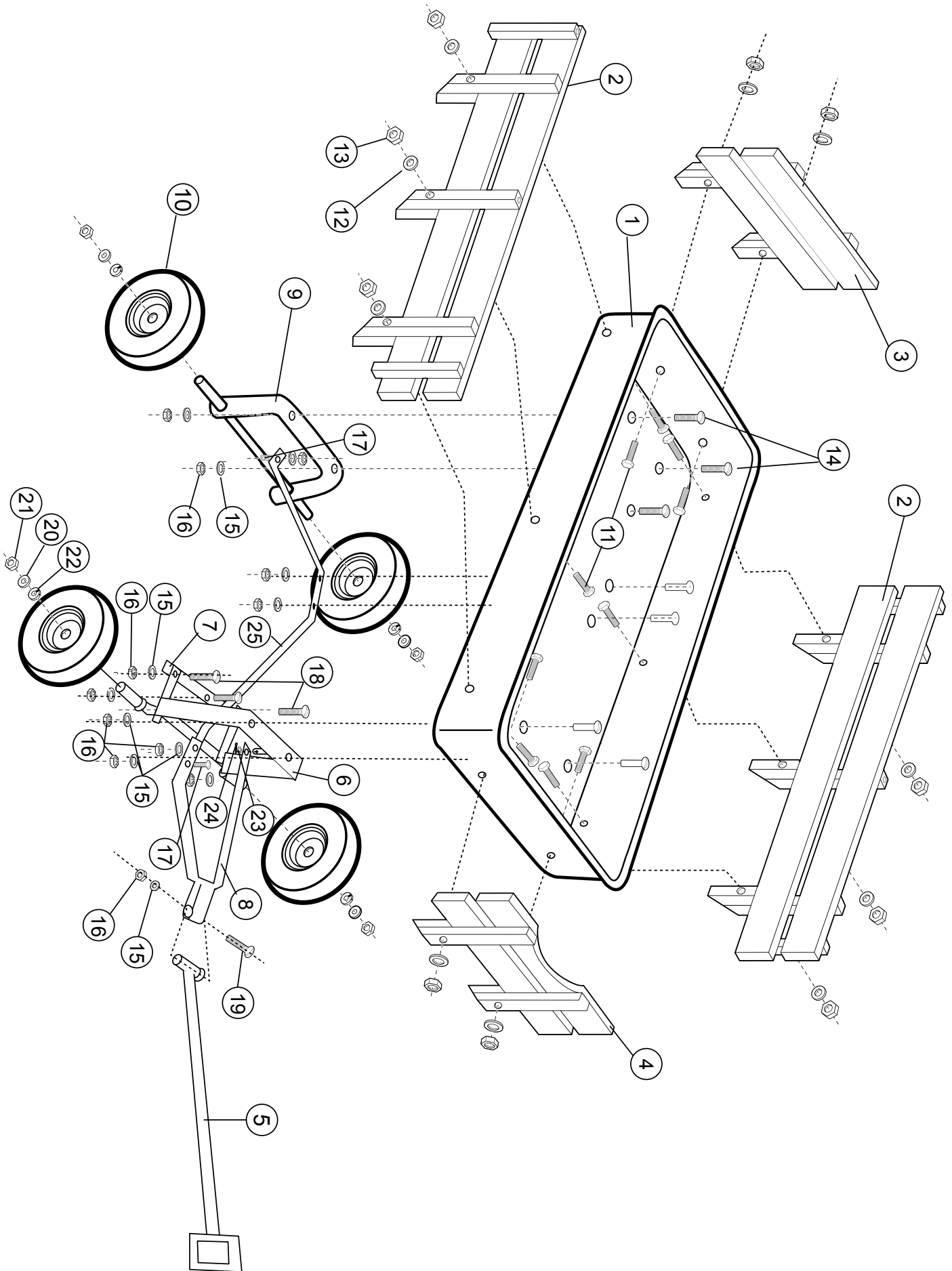
Part	Description	Qty
14	Phillips Bolt M8*20	6
15	Washer Ø8	12
16	Lock Nut M8	12
17	Bolt M8*25	2
18	Bolt M8*20	3
19	Bolt M8*40	1
20	Spring Washer Ø12	4
21	Cap Nut M12	4
22	Washer Ø12	4
23	Washer Ø10	1
24	Lock Pin	1
25	Long Support Brace	1

Record Serial Number Here:

Note: If product has no serial number, record month and year of purchase instead.

Note: Some parts are listed and shown for illustration purposes only, and are not available individually as replacement parts.

Assembly Diagram



PLEASE READ THE FOLLOWING CAREFULLY

THE MANUFACTURER AND/OR DISTRIBUTOR HAS PROVIDED THE PARTS LIST AND ASSEMBLY DIAGRAM IN THIS DOCUMENT AS A REFERENCE TOOL ONLY. NEITHER THE MANUFACTURER OR DISTRIBUTOR MAKES ANY REPRESENTATION OR WARRANTY OF ANY KIND TO THE BUYER THAT HE OR SHE IS QUALIFIED TO MAKE ANY REPAIRS TO THE PRODUCT, OR THAT HE OR SHE IS QUALIFIED TO REPLACE ANY PARTS OF THE PRODUCT. IN FACT, THE MANUFACTURER AND/OR DISTRIBUTOR EXPRESSLY STATES THAT ALL REPAIRS AND PARTS REPLACEMENTS SHOULD BE UNDERTAKEN BY CERTIFIED AND LICENSED TECHNICIANS, AND NOT BY THE BUYER. THE BUYER ASSUMES ALL RISK AND LIABILITY ARISING OUT OF HIS OR HER REPAIRS TO THE ORIGINAL PRODUCT OR REPLACEMENT PARTS THERETO, OR ARISING OUT OF HIS OR HER INSTALLATION OF REPLACEMENT PARTS THERETO.

Limited 90 Day Warranty

Harbor Freight Tools Co. makes every effort to assure that its products meet high quality and durability standards, and warrants to the original purchaser that this product is free from defects in materials and workmanship for the period of 90 days from the date of purchase. This warranty does not apply to damage due directly or indirectly, to misuse, abuse, negligence or accidents, repairs or alterations outside our facilities, criminal activity, improper installation, normal wear and tear, or to lack of maintenance. We shall in no event be liable for death, injuries to persons or property, or for incidental, contingent, special or consequential damages arising from the use of our product. Some states do not allow the exclusion or limitation of incidental or consequential damages, so the above limitation of exclusion may not apply to you. THIS WARRANTY IS EXPRESSLY IN LIEU OF ALL OTHER WARRANTIES, EXPRESS OR IMPLIED, INCLUDING THE WARRANTIES OF MERCHANTABILITY AND FITNESS.

To take advantage of this warranty, the product or part must be returned to us with transportation charges prepaid. Proof of purchase date and an explanation of the complaint must accompany the merchandise. If our inspection verifies the defect, we will either repair or replace the product at our election or we may elect to refund the purchase price if we cannot readily and quickly provide you with a replacement. We will return repaired products at our expense, but if we determine there is no defect, or that the defect resulted from causes not within the scope of our warranty, then you must bear the cost of returning the product.

This warranty gives you specific legal rights and you may also have other rights which vary from state to state.