

# Owner's Manual & Safety Instructions

**Save This Manual** Keep this manual for the safety warnings and precautions, assembly, operating, inspection, maintenance and cleaning procedures. Write the product's serial number in the back of the manual near the assembly diagram (or month and year of purchase if product has no number). Keep this manual and the receipt in a safe and dry place for future reference.

ITEM 96811

**HaulMaster**

**RATCHETING**

# CARGO BAR



Visit our website at: <http://www.harborfreight.com>  
Email our technical support at: [tech@harborfreight.com](mailto:tech@harborfreight.com)

REV 12b

When unpacking, make sure that the product is intact and undamaged. If any parts are missing or broken, please call 1-800-444-3353 as soon as possible.

Copyright© 2007 by Harbor Freight Tools®. All rights reserved.  
No portion of this manual or any artwork contained herein may be reproduced in any shape or form without the express written consent of Harbor Freight Tools. Diagrams within this manual may not be drawn proportionally. Due to continuing improvements, actual product may differ slightly from the product described herein.  
Tools required for assembly and service may not be included.

## **⚠ WARNING**

**Read this material before using this product.  
Failure to do so can result in serious injury.  
SAVE THIS MANUAL.**

## Specifications

Length	40" to 70"
To prevent cargo shift in pick-up trucks, SUV's or hatchbacks	

## IMPORTANT SAFETY INFORMATION



### **WARNING** Read all safety warnings and instructions.

*Failure to follow the warnings and instructions may result in serious injury.*

**Save all warnings and instructions for future reference.**

1. This product is not a toy. Do not allow children to play with or near this item.
2. **Do not use for top-heavy or stacked loads.**
3. Use as intended only.
4. Inspect before every use; do not use if parts are loose or damaged.
5. Do not exceed listed weight capacity.  
**Be aware of dynamic loading!**  
Sudden load movement may briefly create excess load causing product failure.
6. Maintain product labels and nameplates. These carry important safety information. If unreadable or missing, contact Harbor Freight Tools for a replacement.
7. The warnings, precautions, and instructions discussed in this instruction manual cannot cover all possible conditions and situations that may occur. It must be understood by the operator that common sense and caution are factors which cannot be built into this product, but must be supplied by the operator.
8. **Stay alert, watch what you are doing and use common sense when operating the Cargo Bar.** Do not use the Cargo Bar while you are tired or under the influence of drugs, alcohol or medication. *A moment of inattention while operating the Cargo Bar may result in serious personal injury.*
9. **Wear ANSI-approved goggles and work gloves during use.**
10. Follow all DMV (Dept. of Motor Vehicles) specifications for securing loads.



## SAVE THESE INSTRUCTIONS.

## Operating Instructions

1. To extend the Cargo Bar.
  - Pull back on Latch Lock and raise Ratcheting Handle.
  - Pull on Tube to extend, as desired.
  - For supplying load to the Bar to secure it in place, slowly ratchet the Handle until the Bar is tightly and secured in place. Be careful not to apply excessive spreading force. Once the desired load has been applied, push down on the handle (until it is flat against the Tube).
2. To release the load, pull back on the Latch Lock and raise the Handle to its full forward position.

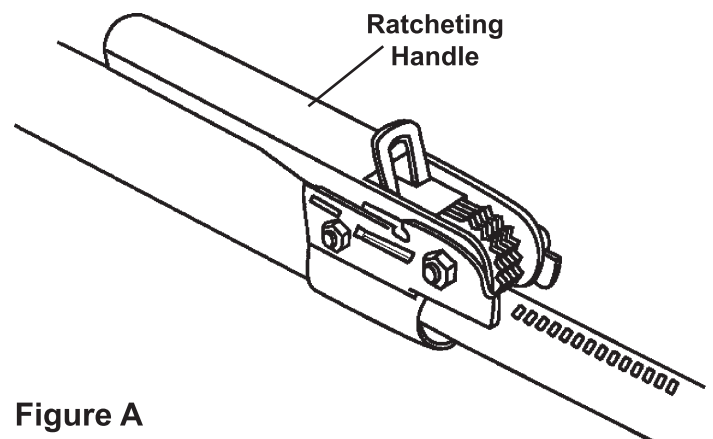


Figure A

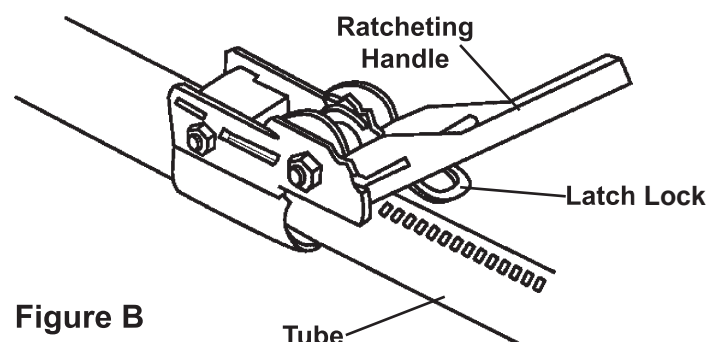


Figure B

## Maintenance and Servicing

### **⚠️ WARNING**

#### TO PREVENT SERIOUS INJURY FROM TOOL FAILURE:

Do not use damaged equipment. If abnormal noise or vibration occurs, have the problem corrected before further use.

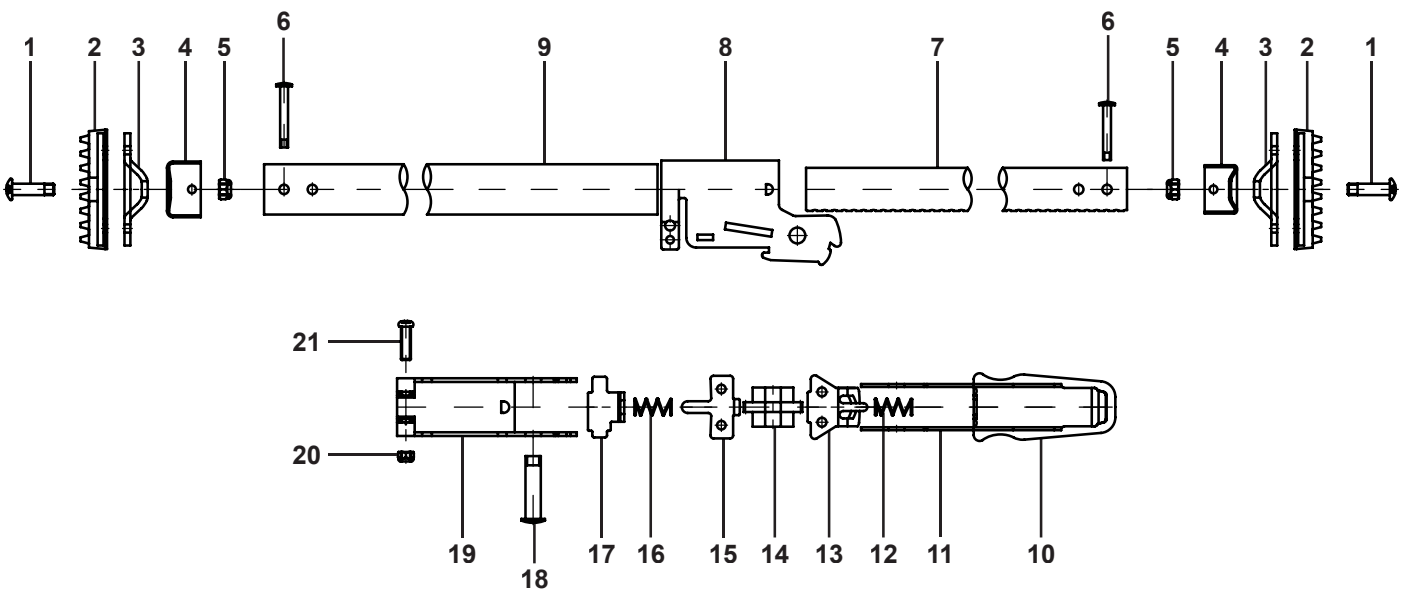
- BEFORE EACH USE**, inspect the general condition of the Cargo Bar. Check for loose screws, cracked or broken parts, and any other condition that may affect its safe operation.
- AFTER USE**, wipe external surfaces of the tool with clean cloth.

## Parts List and Assembly Diagram

Part	Description
1	Foot Pad Screw
2	Foot Pad
3	Steel Plate
4	Inner & Outer Tube Cap
5	Foot Pads Nut
6	Foot Pads Rivet
7	Inner Tube

Part	Description
8	Tube Rack
9	Outer Tube
10	PVC Grip
11	Handle
12	Release lever Spring
13	Release lever
14	Gear set

Part	Description
15	Pawl 1
16	Pawl Spring
17	Pawl 2
18	Housing Rivet
19	Housing
20	Housing Nut
21	Housing Screw



#### Record Product's Serial Number Here:

**Note:** If product has no serial number, record month and year of purchase instead.

**Note:** Some parts are listed and shown for illustration purposes only, and are not available individually as replacement parts.

## PLEASE READ THE FOLLOWING CAREFULLY

---

THE MANUFACTURER AND/OR DISTRIBUTOR HAS PROVIDED THE PARTS LIST AND ASSEMBLY DIAGRAM IN THIS DOCUMENT AS A REFERENCE TOOL ONLY. NEITHER THE MANUFACTURER OR DISTRIBUTOR MAKES ANY REPRESENTATION OR WARRANTY OF ANY KIND TO THE BUYER THAT HE OR SHE IS QUALIFIED TO MAKE ANY REPAIRS TO THE PRODUCT, OR THAT HE OR SHE IS QUALIFIED TO REPLACE ANY PARTS OF THE PRODUCT. IN FACT, THE MANUFACTURER AND/OR DISTRIBUTOR EXPRESSLY STATES THAT ALL REPAIRS AND PARTS REPLACEMENTS SHOULD BE UNDERTAKEN BY CERTIFIED AND LICENSED TECHNICIANS, AND NOT BY THE BUYER. THE BUYER ASSUMES ALL RISK AND LIABILITY ARISING OUT OF HIS OR HER REPAIRS TO THE ORIGINAL PRODUCT OR REPLACEMENT PARTS THERETO, OR ARISING OUT OF HIS OR HER INSTALLATION OF REPLACEMENT PARTS THERETO.

### Limited 90 Day Warranty

Harbor Freight Tools Co. makes every effort to assure that its products meet high quality and durability standards, and warrants to the original purchaser that this product is free from defects in materials and workmanship for the period of 90 days from the date of purchase. This warranty does not apply to damage due directly or indirectly, to misuse, abuse, negligence or accidents, repairs or alterations outside our facilities, criminal activity, improper installation, normal wear and tear, or to lack of maintenance. We shall in no event be liable for death, injuries to persons or property, or for incidental, contingent, special or consequential damages arising from the use of our product. Some states do not allow the exclusion or limitation of incidental or consequential damages, so the above limitation of exclusion may not apply to you. THIS WARRANTY IS EXPRESSLY IN LIEU OF ALL OTHER WARRANTIES, EXPRESS OR IMPLIED, INCLUDING THE WARRANTIES OF MERCHANTABILITY AND FITNESS.

To take advantage of this warranty, the product or part must be returned to us with transportation charges prepaid. Proof of purchase date and an explanation of the complaint must accompany the merchandise. If our inspection verifies the defect, we will either repair or replace the product at our election or we may elect to refund the purchase price if we cannot readily and quickly provide you with a replacement. We will return repaired products at our expense, but if we determine there is no defect, or that the defect resulted from causes not within the scope of our warranty, then you must bear the cost of returning the product.

This warranty gives you specific legal rights and you may also have other rights which vary from state to state.

