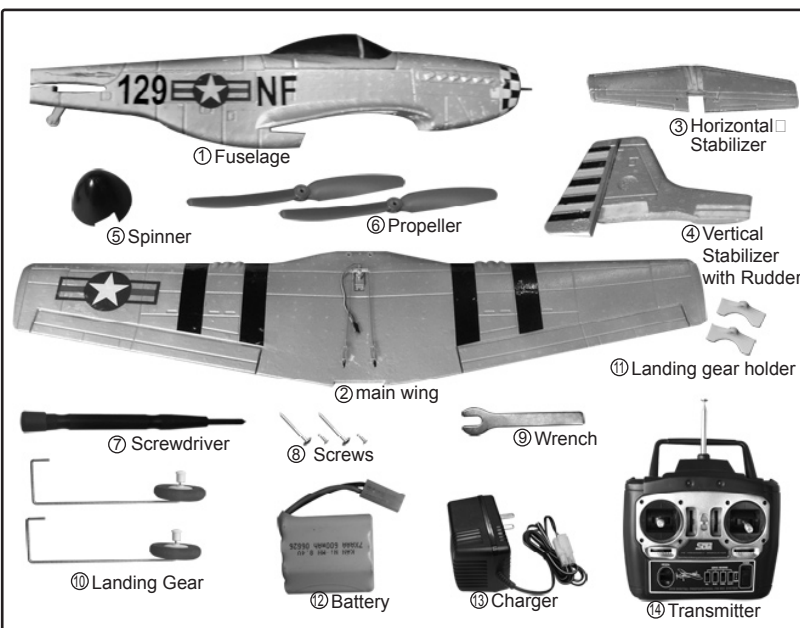


# P-51D MUSTANG USER MANUAL

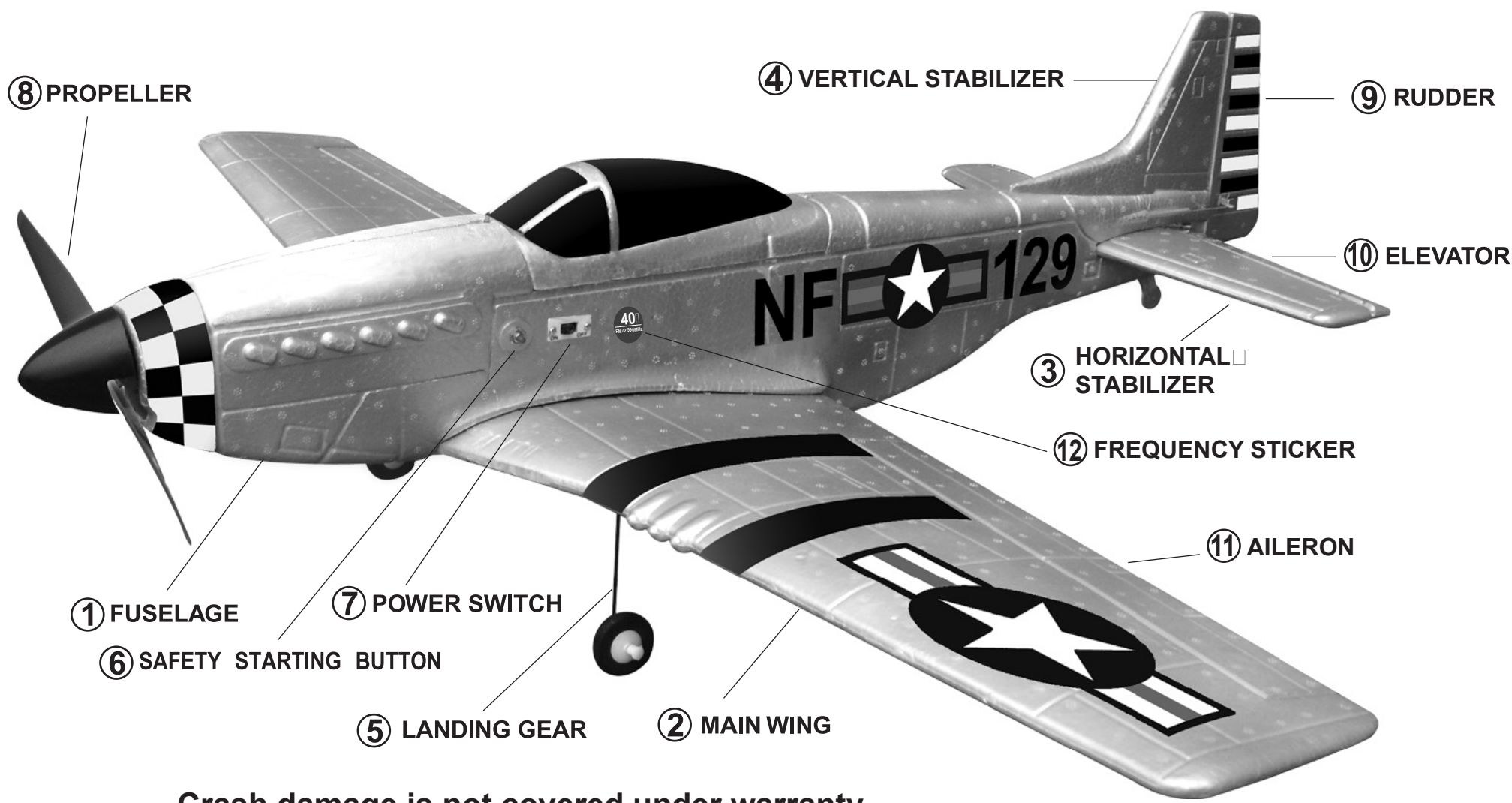
## PRODUCT SPECIFICATIONS

Wingspan: ----- 34.25"  
 Wing Area: ----- 204.6 Sq. In.  
 Fuselage Length: ----- 29"  
 Flying Weight: ----- 18.6 Oz.  
 Power System: ---370 Motor With Gear Box  
 Battery: ----- Ni-Mh 8.4V-600mAh  
 Flight Time:----- Approx 10 min  
 Radio System: --- 4 Channel Radio Control System.

**PARTS LIST** When ordering replacement parts, only order the parts by the part numbers shown in the Parts List box below. Please locate all parts according to the packing list enclosed. If parts are missing, please contact your local distributor for assistance.

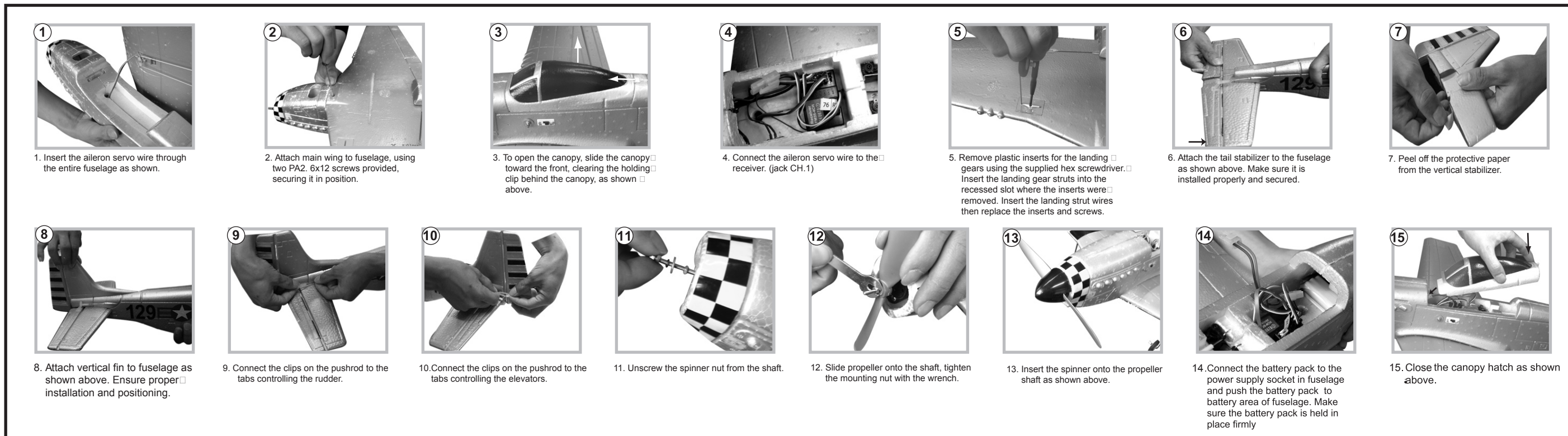


## ASSEMBLY INSTRUCTIONS

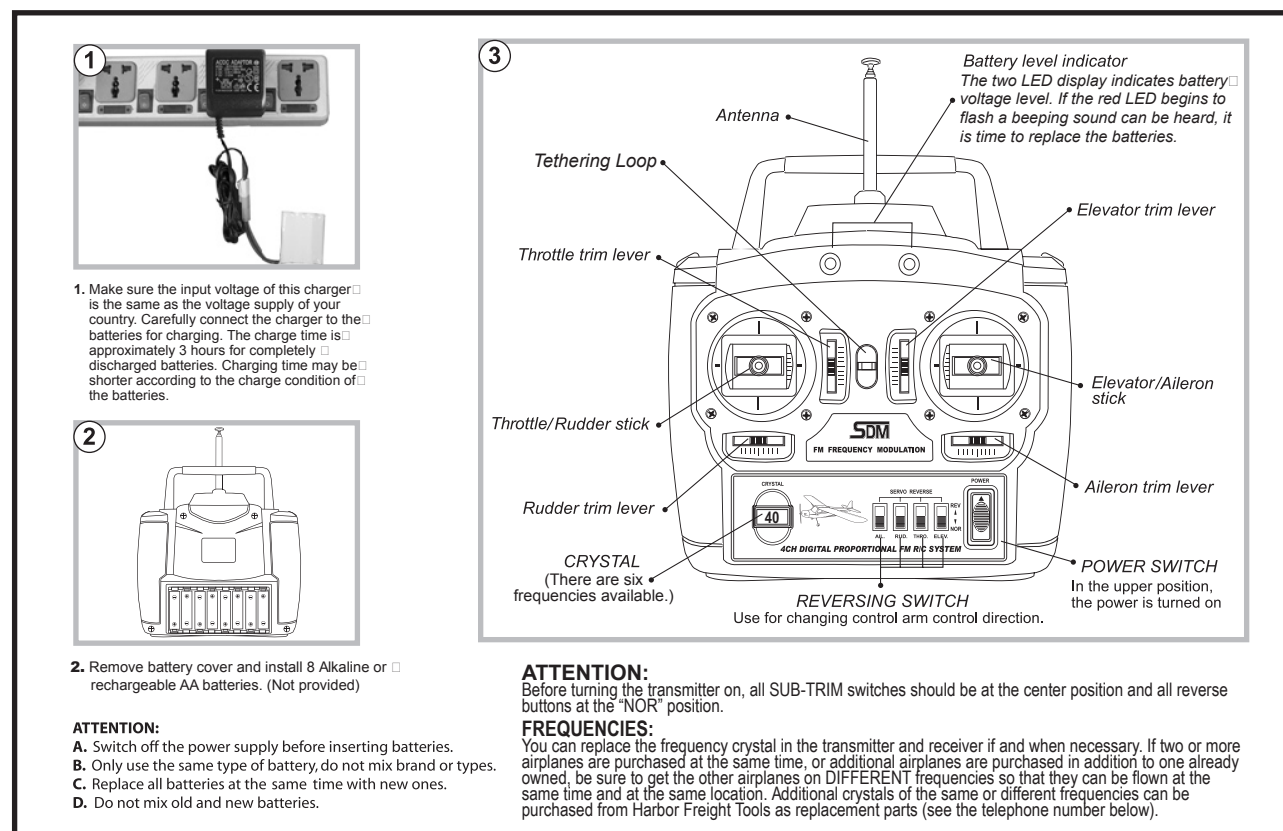


**Crash damage is not covered under warranty.**

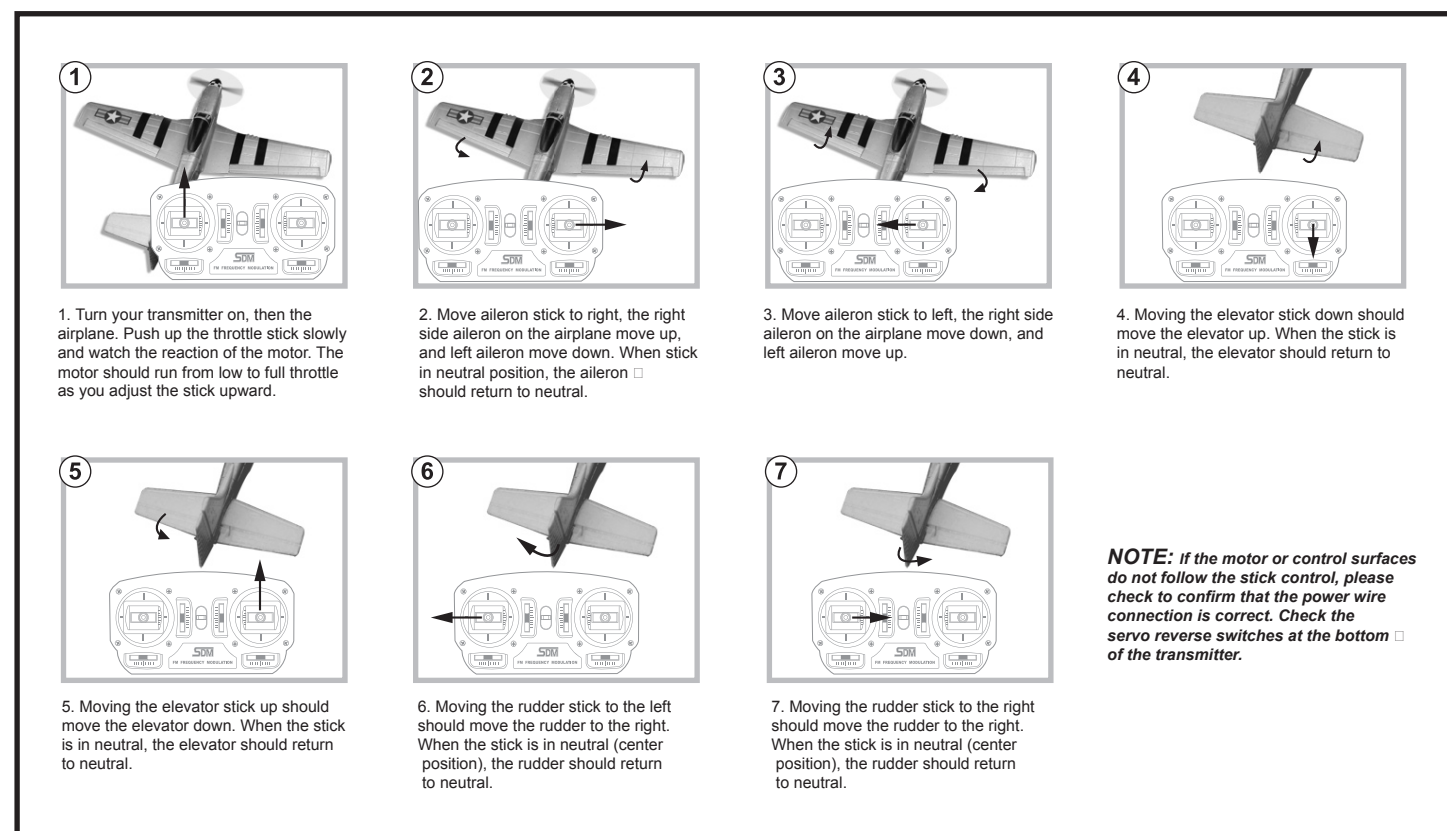
### (1) Installation



### (2) Setting and usage of radio system



### (3) Before flight test



### (4) Maintenance

- ★ After landing, switch off the power of plane immediately.
- ★ Take out the Ni-MH batteries.
- ★ Check that all parts of plane have no damage.
- ★ Any damaged parts should be replaced before next flight.
- ★ Clean the model before next flight.
- ★ Check the landing gear, making sure the holding screws are not coming loose.

### WARNING

- \* Read and study the manual carefully before assembly of aircraft. Charge the battery following instructions.
  - \* Before flying, turn the radio on first, and keeping your hands away from the propeller, turn on the aircraft. If the propeller starts to spin or control surfaces start moving, it may mean someone else is already on your frequency.
  - \* Upon landing, turn off the aircraft first, then the radio to eliminate the possibility of your aircraft going out of control.
  - \* If the red warning light on the radio flashes and beeps, replace batteries immediately.
  - \* Fly only where there are no people or animals that may be struck and injured by your aircraft.
  - \* Do not overcharge batteries. Overcharging can result in shortened battery life, and possible fire hazard. Charge on a flat, fireproof surface that will not be affected by heat.
  - \* Dispose of the Ni-MH batteries properly, following local regulations.
  - \* Do not charge batteries when they are hot.
  - \* Operating the radio near someone on the same frequency will cause interference for both.
  - \* Do not pick up the airplane while it is in motion or the propeller is spinning.
  - \* Make certain to fly the airplane in a large area free of interference from trees, electrical power lines and other obstacles.
  - \* Never fly near buildings, cars, busy streets or near other people and animals.
  - \* Do not attempt to fly if wind speeds are above 10 MPH.
  - \* Before flying, perform a distance check to be certain that you can maintain radio control with the airplane when least 25 feet from the transmitter with the transmitter antenna collapsed.
  - \* Do not trim the airplane's wire antenna. Trimming the antenna will affect radio range.
  - \* Maximum operating range is 1600'. Tested at a range of 550'.
- WARNING:** People with pacemakers should consult their physicians(s) before using this product. Electromagnetic fields in close proximity to a heart pacemaker could cause interference to/or failure of the pacemaker.
- Changes or modifications not expressly approved by the party responsible for compliance could void the user's authority to operate the equipment.*

For use by ages 16 and up with adult supervisions only.

Distributed exclusively by Harbor Freight Tools®. For technical questions or replacement parts, please call 1-800-444-3353