

**CENTRAL MACHINERY**®

# SHRINKER AND STRETCHER STAND

**Model 96008**

## ASSEMBLY AND OPERATION INSTRUCTIONS



Shrinker-Stretcher not included.

Due to continuing improvements, actual product may differ slightly from the product described herein.



3491 Mission Oaks Blvd., Camarillo, CA 93011

Visit our website at: <http://www.harborfreight.com>

**TO PREVENT SERIOUS INJURY, READ AND UNDERSTAND  
ALL WARNINGS AND INSTRUCTIONS BEFORE USE.**

Copyright© 2007 by Harbor Freight Tools®. All rights reserved. No portion of this manual or any artwork contained herein may be reproduced in any shape or form without the express written consent of Harbor Freight Tools.

---

## SPECIFICATIONS

---

For Use With	SKU 95062 Manual Shrinker Stretcher
Overall Height	41-7/8"
Main Post	3-1/4" x 1-5/8" rectangular stock
Mounting Plate	16-1/2" L x 7-1/2" W x 3/8" Thick
Leg Separation	27-1/8"
Leg Width	26-1/8"
Foot Pads Distance from Ground	1 Ft.
Net Weight	74.7 Lbs.
Foot pedal operation allows you to keep both hands free for handling the work piece.	

### Save This Manual

You will need this manual for the safety warnings and precautions, operating, inspection, maintenance and cleaning procedures, parts list and assembly diagram. Keep your invoice with this manual. Write the invoice number on the inside of the front cover. Write the product's serial number in the back of the manual near the assembly diagram, or write month and year of purchase if product has no number. Keep this manual and invoice in a safe and dry place for future reference.

---

## GENERAL SAFETY RULES

---

 **WARNING!**

**READ AND UNDERSTAND ALL INSTRUCTIONS**  
**Failure to follow all instructions listed below may result in**  
**electric shock, fire, and/or serious injury.**  
**SAVE THESE INSTRUCTIONS**

1. **Keep your work area clean and well lit.** Cluttered benches and dark areas invite accidents.
2. **Keep bystanders, children, and visitors away while operating the Shrinker Stretcher.** Distractions can cause you to lose control. Protect others in the work area from debris such as chips and sparks. Provide barriers or shields as needed.
3. **Stay alert. Watch what you are doing, and use common sense when assembling this Stand and when using the Shrinker Stretcher. Do not use while tired or under the influence of drugs, alcohol, or medication.** A moment of inattention while operating this product may result in serious personal injury.

4. **Dress properly. Do not wear loose clothing or jewelry. Contain long hair. Keep your hair, clothing, and gloves away from moving parts.** Loose clothes, jewelry, or long hair can be caught in moving parts.
5. **Do not overreach. Keep proper footing and balance at all times.** Proper footing and balance enables better control of the Shrinker Stretcher in unexpected situations.
6. **Use safety equipment. Always wear eye protection.** Nonskid safety shoes, hard hat must be used for appropriate conditions. Always wear ANSI-approved safety goggles when using or performing maintenance on this tool.
7. **Do not force the tool. Use the correct tool for your application.** The correct tool will do the job better and safer at the rate for which it is designed. Do not force the tool and do not use the tool for a purpose for which it is not intended.
8. **Store idle tools out of reach of children and other untrained persons.** Tools are dangerous in the hands of untrained users. Never allow children to play with or climb on this Stand.
9. **Check for misalignment or binding of moving parts, breakage of parts, and any other condition that may affect the tool's operation. If damaged, have the tool serviced before using.** Many accidents are caused by poorly maintained tools.
10. **Use only accessories that are recommended by the manufacturer for your model.** Accessories that may be suitable for one tool may become hazardous when used on another tool.
11. **When servicing a tool, use only identical replacement parts. Follow instructions in the “*Inspection, Maintenance, And Cleaning*” section of this manual.** Use of unauthorized parts or failure to follow maintenance instructions may create a risk of electric shock or injury.
12. **Maintain labels and nameplates on the tool.** These carry important information. If unreadable or missing, contact Harbor Freight Tools for a replacement.
13. **Maintain a safe working environment.** Make sure there is adequate surrounding workspace. Do not use this product in a damp or wet location.
14. **Do not use the Shrinker Stretcher Stand as a scaffold, ladder or stool.** Only use this product for its intended use.
15. **Make certain to use the Shrinker Stretcher Stand on a flat, level and solid surface that will support the weight of the Stand and the weight of the work-piece.**
16. **When assembling or moving a heavy or large work piece, always get assistance from other able individuals.**

17. **Make certain that the work area is large enough so that the Shrinker Stretcher Stand and the workpiece are clear of any walls, furniture and obstacles.**
18. **Only use this Stand with SKU 95062 Manual Shrinker Stretcher.**

---

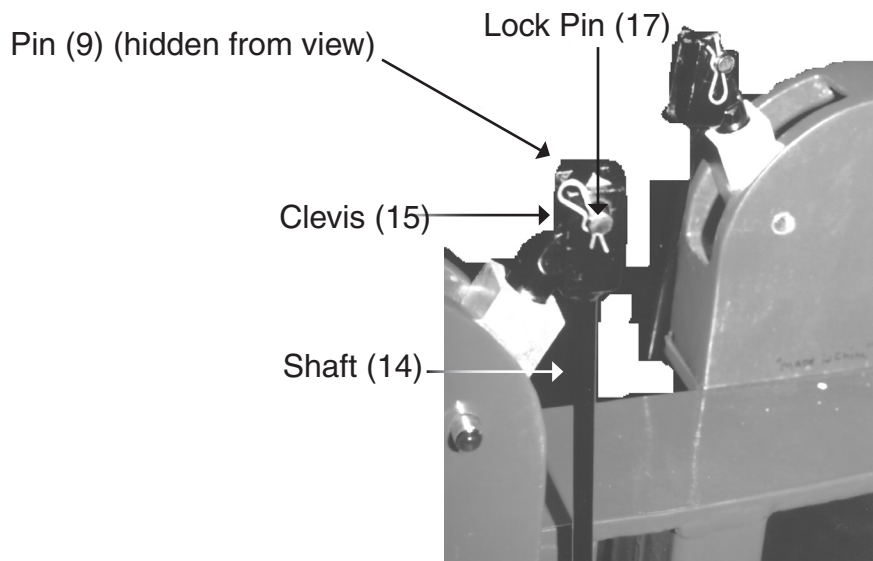
## ASSEMBLY INSTRUCTIONS

---

**Note:** For additional information regarding the parts listed in the following pages, refer to the Assembly Diagram near the end of this manual.

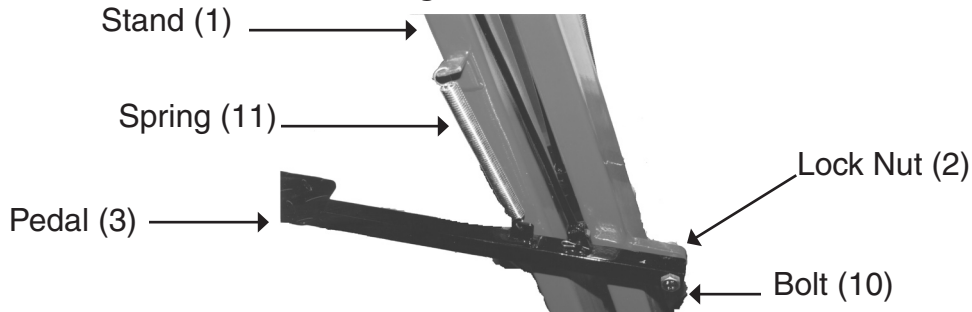
1. Connect each Wheel (6) to Support (4) with Pin (7) and Cotter Pin (8).
2. Attach Support (4) and Support Leg (13) to the Stand (1) with Bolts (5) and Lock Nuts (12). Insert each Bolt (5) through the Support (4), the Stand (1) and through the Support Leg (13), then thread on Lock Nuts (12).
3. Secure each Clevis (15) to each Shaft (14) with Pin (9), Cotter Pin (16) and Lock Pin (17)-see Figure 1.

**Figure 1**



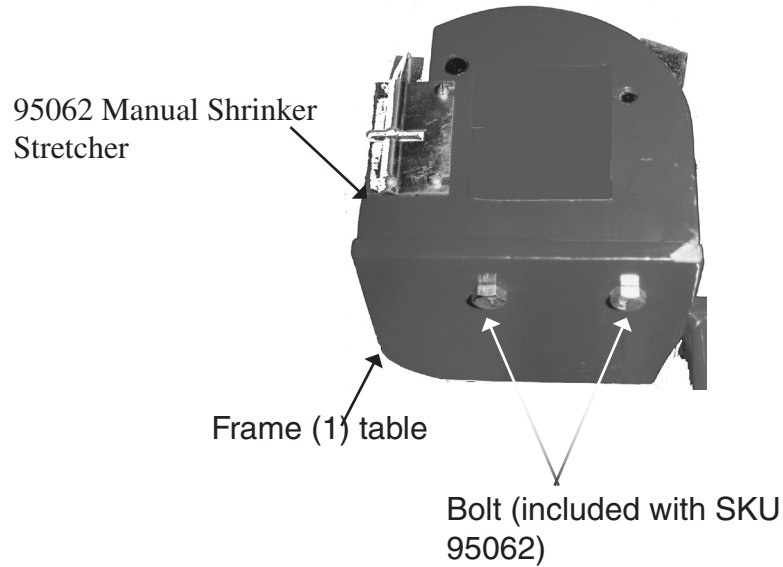
4. Secure each Pedal (3) to Frame (1) with Bolt (10) and Lock Nut (2)-see Figure 2.

**Figure 2**



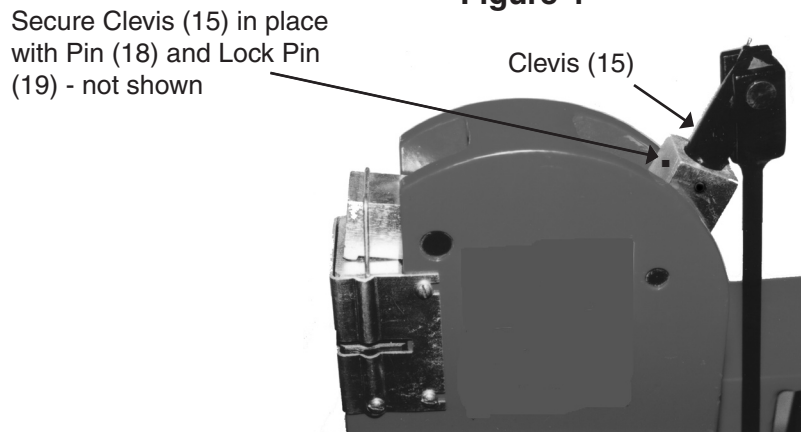
5. Secure Shaft (14) to Pedal (3) with Pin (9), and Lock Pin (17).
6. Attach Springs (11) to Pedals (3) and Stand (1) as shown in Figure 2.

**Figure 3**



7. To connect each Shrinker-Stretcher to the Stand, two Bolts are inserted through the underside of the Frame (1) table and threaded into the bottom of each Shrinker-Stretcher-see Figure 3. All four Mounting Bolts are included with SKU 95062.
8. The Clevis (15) will fit in place of the the Shrinker-Stretcher Handle. A Clevis (15) will fit in place of each Shrinker-Stretcher Handle. Remove the Handle and insert the Clevis (15) in its place. Insert Pin (18) and Lock Pin (19) to secure Clevis (15) in its place-see Figure 4.

**Figure 4**




---

## OPERATION INSTRUCTIONS

---

1. Follow all instructions in the Assembly and Operation Manual for SKU 95062.

- To activate each Shrinker-Stretcher, press down on the Pedal with your foot.

---

## **INSPECTION, MAINTENANCE, AND CLEANING**

---

- BEFORE EACH USE**, inspect the general condition of the tool. Check for loose screws, misalignment or binding of moving parts, cracked or broken parts, and any other condition that may affect its safe operation. **Do not use damaged equipment.**
- Clean the Shrinker and Stretcher Stand with warm water and a soft cloth. Do not use flammable detergents or harsh abrasives as they will damage the Stand.

---

## **PARTS LIST**

---

<b>Part</b>	<b>Description</b>	<b>Q'ty</b>
1	Frame	1
2	Lock Nut M12	2
3	Pedal	2
4	Support	1
5	Bolt M16	2
6	Wheel	2
7	Pin	2
8	Cotter Pin	6
9	Pin	4
10	Bolt M12	2

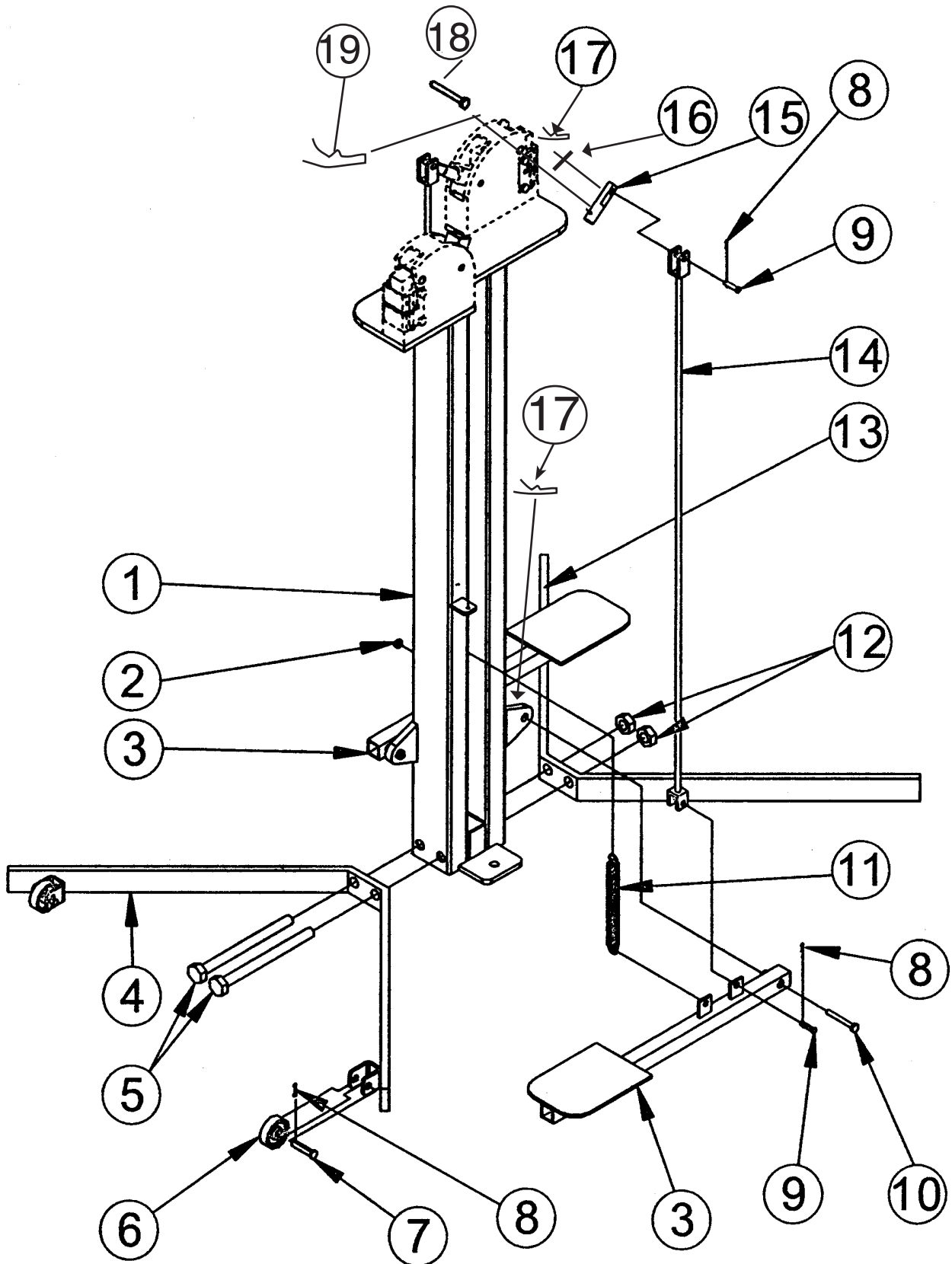
<b>Part</b>	<b>Description</b>	<b>Q'ty</b>
11	Spring	2
12	Lock Nut M16	2
13	Support Leg	1
14	Shaft	2
15	Clevis	2
17	Lock Pin	4
18	Pin	2
19	Lock Pin	1

### **PLEASE READ THE FOLLOWING CAREFULLY**

THE MANUFACTURER AND/OR DISTRIBUTOR HAS PROVIDED THE PARTS LIST AND ASSEMBLY DIAGRAM IN THIS MANUAL AS A REFERENCE TOOL ONLY. NEITHER THE MANUFACTURER OR DISTRIBUTOR MAKES ANY REPRESENTATION OR WARRANTY OF ANY KIND TO THE BUYER THAT HE OR SHE IS QUALIFIED TO MAKE ANY REPAIRS TO THE PRODUCT, OR THAT HE OR SHE IS QUALIFIED TO REPLACE ANY PARTS OF THE PRODUCT. IN FACT, THE MANUFACTURER AND/OR DISTRIBUTOR EXPRESSLY STATES THAT ALL REPAIRS AND PARTS REPLACEMENTS SHOULD BE UNDERTAKEN BY CERTIFIED AND LICENSED TECHNICIANS, AND NOT BY THE BUYER. THE BUYER ASSUMES ALL RISK AND LIABILITY ARISING OUT OF HIS OR HER REPAIRS TO THE ORIGINAL PRODUCT OR REPLACEMENT PARTS THERETO, OR ARISING OUT OF HIS OR HER INSTALLATION OF REPLACEMENT PARTS THERETO.

**Note:** Some parts are listed and shown for illustration purposes only, and are not available individually as replacement parts.

**PARTS AND ASSEMBLY DIAGRAM**



---

## **LIMITED 90 DAY WARRANTY**

---

Harbor Freight Tools Co. makes every effort to assure that its products meet high quality and durability standards, and warrants to the original purchaser that this product is free from defects in materials and workmanship for the period of 90 days from the date of purchase. This warranty does not apply to damage due directly or indirectly, to misuse, abuse, negligence or accidents, repairs or alterations outside our facilities, criminal activity, improper installation, normal wear and tear, or to lack of maintenance. We shall in no event be liable for death, injuries to persons or property, or for incidental, contingent, special or consequential damages arising from the use of our product. Some states do not allow the exclusion or limitation of incidental or consequential damages, so the above limitation of exclusion may not apply to you. THIS WARRANTY IS EXPRESSLY IN LIEU OF ALL OTHER WARRANTIES, EXPRESS OR IMPLIED, INCLUDING THE WARRANTIES OF MERCHANTABILITY AND FITNESS.

To take advantage of this warranty, the product or part must be returned to us with transportation charges prepaid. Proof of purchase date and an explanation of the complaint must accompany the merchandise. If our inspection verifies the defect, we will either repair or replace the product at our election or we may elect to refund the purchase price if we cannot readily and quickly provide you with a replacement. We will return repaired products at our expense, but if we determine there is no defect, or that the defect resulted from causes not within the scope of our warranty, then you must bear the cost of returning the product.

This warranty gives you specific legal rights and you may also have other rights which vary from state to state.

***3491 Mission Oaks Blvd. • PO Box 6009 • Camarillo, CA 93011 • (800) 444-3353***