



Infotainment system

Infotainment System information is displayed on the TFT display on the right of the instrument panel.

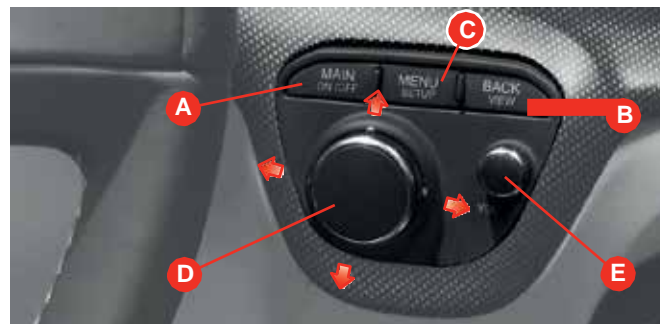
To manage the system, use the controls on the dashboard to the right of the steering wheel (right satellite pod).

Overview of dashboard controls

Button	Press and quick release (word at the top)	Press and hold down (word at the bottom)
A	Calls up the MAIN screen page	Turns the Infotainment System on/off
B	Goes back to the previous level	Displays the virtual speedometer
C	Calls up the context menu	Calls up the Infotainment System setup menu

The joystick **D** can be rotated to scroll list items, held down to select an item, or moved up/down/right/left to move between system functions.

Control **E** can be rotated to adjust volume; press to activate MUTE.



MAIN screen page

The main screen page, which can be accessed at any time by pressing button **A** MAIN, displays the 4 system functions: NAVI (navigation system), MEDIA (CD/DVD, USB, iPod, Bluetooth), RADIO and PHONE (telephone).

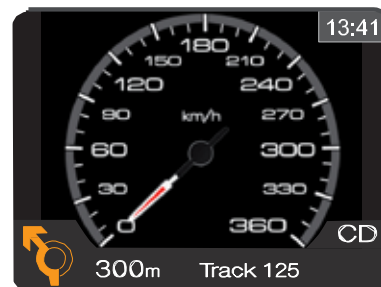
To access the functions, move the joystick **D** up (NAVI), right (MEDIA), left (RADIO) or down (PHONE).

Press and release button **C** to access the relative context menu, from any system area. Press and hold down button **C** to call up the general system setup menu.

Press and hold down button **B** to display full screen Infotainment System information or the virtual speedometer.

When the virtual speedometer is displayed on the right TFT display, the Infotainment System functions are active: information (for example about the navigation system) is displayed in minimised form in the bottom part of the display, as shown in the example below.

3





Navigation: how to get to your destination

With the NAVI function enabled, rotate the joystick to select “Destination entry” and press the joystick to confirm. In the screen page, select “Address”. Rotate and then press the joystick, to select: the road/street, town/city, postcode, country.

Rotate or move the joystick then press down to select the letters displayed.

Then select “GO” to calculate the route. Press button **B** BACK to go back to the previous level, at any time.

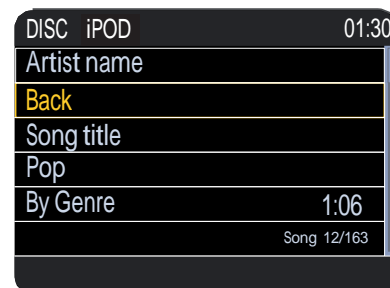
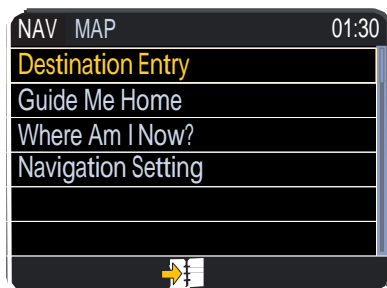
How to display the route map

Move the joystick **D** left, to switch from displaying the navigator functions list (NAV mode) to displaying the map/route (MAP); move the joystick right to switch from the map to the functions list. When the map is displayed, rotate the joystick to zoom in/out.

How to select a MEDIA source

With the MEDIA function enabled, you can select four sources, in the top left of the display: **DISC** (CD or DVD, optional), **USB** (external USB device), **iPod** (external Apple iPod), or **Bluetooth** (streaming audio). Sources are only displayed when effectively available - i.e. after inserting a disc, connecting an external audio device to the USB connector in the centre console glove compartment - under the armrest - or connecting to a device via Bluetooth (see page 124).

To switch from one source to another, move the joystick right or left.



Disc mode (DISC)

The optional CD/DVD reader is installed on the rear shelf between the two rear seats.

Warning



The player only accepts 12 cm (4 3/4 inch) discs. The use of different-sized discs may damage the player mechanism.

Audio track playback

While playing a song, press the joystick to display a button row for the following functions: Play or Pause / Stop / REW / Skip - / Skip + / FF. The button row will disappear after a set timeout, or if you press the button **B BACK**.

3





USB and iPod mode

In USB mode, you can play audio files stored on external devices (e.g. USB keys). These devices can be connected to the system by the USB connector **G** located in the glove compartment under the armrest of the centre console.

Using the USB connector, you can also play audio files from iPod® and iPhone® devices, using the USB cable supplied with the device.

Bluetooth mode (audio streaming)

The audio files on mobile telephones paired via Bluetooth can be played by the system in audio streaming. For further information on pairing a mobile phone to the infotainment system, see page 125.

Playing tracks is the same as for other external devices connected via USB.

Listening to a RADIO station

In RADIO mode, four different frequency bands are selectable at the top left of the right hand TFT display: FM, MW, LW and DAB digital radio. To switch from one band to another, move the joystick right or left.

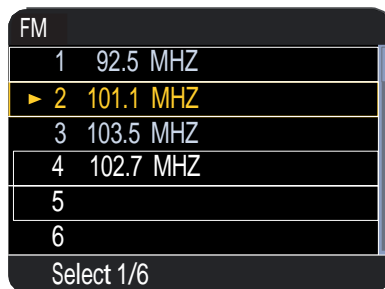
Rotate the joystick to display stored radio stations (preset): press the joystick to select the station.

While listening to a radio station, press the joystick and release to display a radio tuner button row (in the figure): Mute or Unmute / Seek - / Fine Tune - / Fine Tune + / Seek +. The button row will disappear after a set timeout, or if you press the button **B BACK**.



Storing a radio station

To store a radio station, find the frequency of the station, then press and hold down the joystick **D**. A preset list (in the figure) will appear on the right TFT display: move the joystick to where you want to store the radio station and press to confirm.



Pairing a telephone and making a call

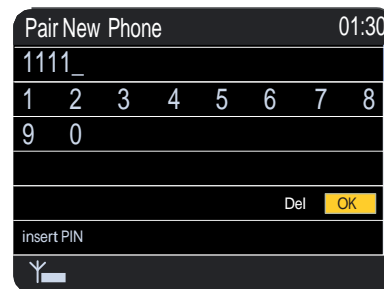
The PHONE function has two modes, in the top left of the display: Phone and Bluetooth. To switch from one mode to another, move the joystick right or left.

To use your telephone, it must be paired to the system by Bluetooth: move the joystick right to select Bluetooth mode, then select "Pair new telephone".

At this point, rotate or move and then press the joystick to enter a 4-digit code (pairing PIN) on the displayed keyboard (in the figure), then select OK.

The system will ask you to pair your mobile telephone: search for Bluetooth devices, select "Ferrari", then enter the PIN.

A confirmation message will be displayed.



3



FCC Declaration

This device complies with Part 15 of the FCC Rules and with Industry Canada license-exempt RSS standard(s). Operation is subject to the following two conditions: (1) this device may not cause harmful interference, and (2) this device must accept any interference received, including interference that may cause undesired operation.

Le présent appareil est conforme aux CNR d'Industrie Canada applicables aux appareils radio exempts de licence. L'exploitation est autorisée aux deux conditions suivantes: (1) l'appareil ne doit pas produire de brouillage, et (2) l'utilisateur de l'appareil doit accepter tout brouillage radioélectrique subi, même si le brouillage est susceptible d'en compromettre le fonctionnement.

Safety Information

Exposure to Radio Frequency Radiation

The radiated output power of the this internal wireless radio is far below the FCC radio frequency exposure limits. Nevertheless, the wireless radio shall be used in such a manner that the radio is 20 cm or further from the human body.





Infotainment System controls on the steering wheel

As well as using the commands on the dashboard to the right of the steering wheel, the infotainment system can be controlled using buttons behind the steering wheel, as shown by the arrows in the figure.



Buttons **A** and **B** for volume control and button VR/TEL **C** are on the left-hand steering wheel spoke: press button **A** to increase the volume and press button **B** to decrease it. Hold down button **B** to mute the volume (MUTE function). To deactivate volume muting, press button **A**.

Button **C** is used to activate the voice commands; if the voice recognition function is already activated, it can be deactivated by quickly pressing button **C**. If there is an incoming call, quickly press button **C** to accept it or hold it down to refuse it.

The SCAN + **D** and SCAN - **E** buttons are on the right-hand steering wheel spoke. They are used to scan the radio stations (if RADIO mode is activated) or go to the next or previous track (if MEDIA mode is activated). The SOURCE **F** button lets you select available sources (MW, LW, FM, DAB, AHA, and DISC, USB, iPod or Bluetooth).

3

