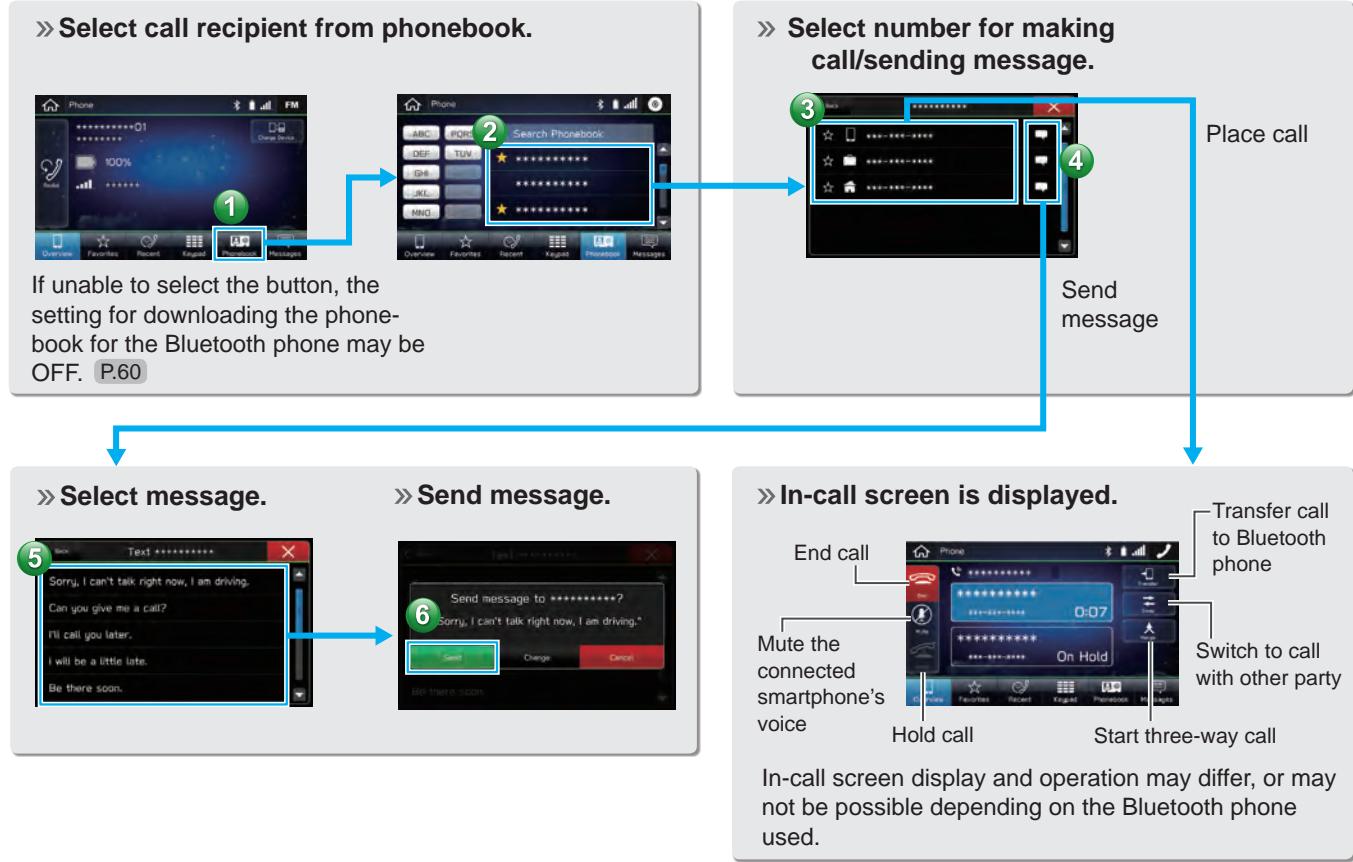


- Operation Flow: Placing Calls/Sending Messages from the Phonebook -



BASIC FUNCTION

“Map (Map)” SCREEN (8-inch with Navi system only)

CURRENT POSITION MAP

Current vehicle position (facing direction of travel)

Menu button P.162

Speed limit

Zoom in

Scale indicator

Zoom out

Traffic information on/off

Voice guidance on/off

Search for nearby gas stations

Touch screen to display automatically hidden buttons. P.163

Current street
Touch the current street name to display details of the current location, allowing that location to be registered.



The orientation of the map can be changed between 2D north-up, 2D heading-up and 3D. P.165



2D North-up screen 2D Heading-up screen 3D screen

ROUTE GUIDANCE SCREEN

Next street name

Guidance route

Current position

Distance to the next turn and an arrow indicating the turning direction

Remaining time/remaining distance/estimated arrival time

Destination search P.172

Route guidance P.180

- Operation Flow: Route Guidance -

» **Display the destination search menu.**

Destinations can also be set directly from the Map screen. **P.173**

» **Search for your destination.**

Start a search with a variety of words such as addresses, facility names, or latitude/longitude, etc.

Also search by POIs or previously set destinations. **P.174,175**

Predicted search results will automatically appear as you type.

» **Select your destination.**

Destinations matching the search words are displayed in a list.

» **Select the route.**

A search is performed and results displayed for the fastest, shortest, and most economic routes. **P.178**

» **Route guidance starts.**

The travel route is displayed, and voice guidance starts.

JUNCTION SCREEN

The screen display automatically changes to display travel lanes at expressway junctions, etc. **P.181**

RETURNING HOME

If you register an address as Home, it can be quickly set as a destination.

- Register an address as Home **P.31**
- Setting Home as the destination **P.172**

BASIC FUNCTION

“Radio (Radio)” SCREEN

Change radio mode

Select to scan for receivable stations/channels.

Select to turn HD Radio mode on/off (AM/FM). P.126

Preset stations/channels

PAUSE AND PLAYBACK LIVE RADIO



Previous Next
 Pause/play Current program

Radio programs can be temporarily saved and played back later. P.128

- Operation Flow: Presetting a Radio Station -

» Select the radio band.

1

A valid subscription to SiriusXM® Satellite Radio is required to receive satellite radio service.

» Select the radio station.

2 Scan

OR

3 Select to seek for a station/channel.

» Register the radio station.

4

Mix preset function
 Multiple stations can be registered as presets. (AM, FM or SiriusXM® Satellite Radio) P.125,134

Select and hold one of the screen buttons.

“Media (Media)” SCREEN

Playback tracks and programs, etc. in a variety of playback modes

Change media source

Change to other Bluetooth audio device/register new device

Repeat/do not repeat track currently playing

Random playback on/off

Change tracks

Select and hold to fast rewind

Pause/play

Change tracks

Select and hold to fast forward

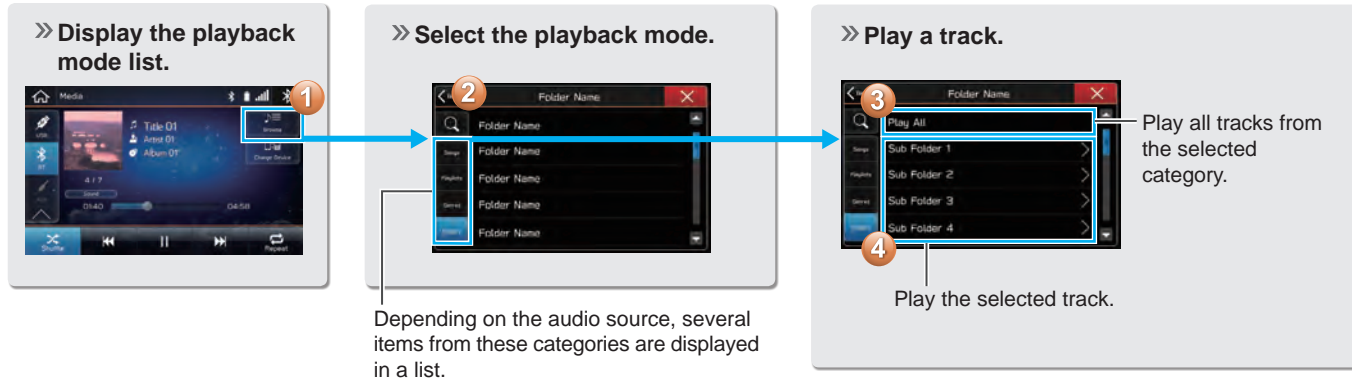
SUPPORTED MEDIA

CD P.155

USB/iPod P.158

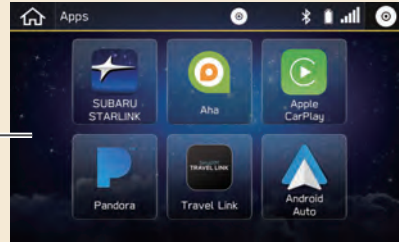
Bluetooth audio P.53

- Operation Flow: Using Playback Modes -



“Apps (Apps)” SCREEN

List of usable applications



ABOUT USING APPLICATIONS

In order to use an application on this system, the corresponding application must be installed on your smartphone. P.96

Apple CarPlay does not require an application to be installed.



Pandora*



Pandora is free personalized radio that offers effortless and endless music enjoyment and discovery. P.108

*: Pandora is only available in certain countries. Please visit pandora.com/legal for more information.



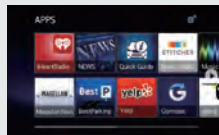
aha™



aha™ is a cloud-based application that connects to the system and gives you access to your favorite web content safely and easily. P.104



SUBARU STARLINK



The SUBARU STARLINK function allows the system to link with a smartphone. P.99