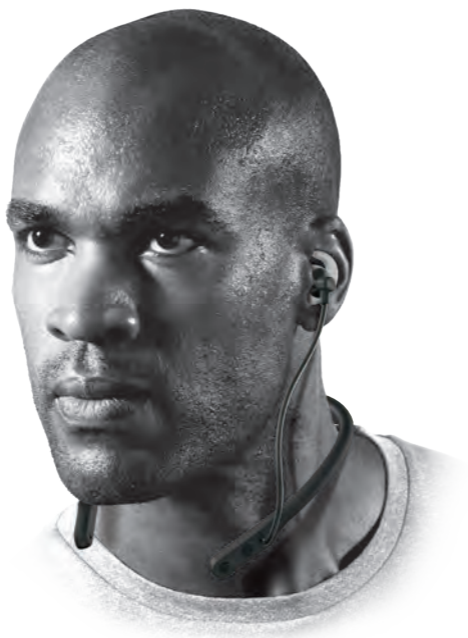




Reflect Fit



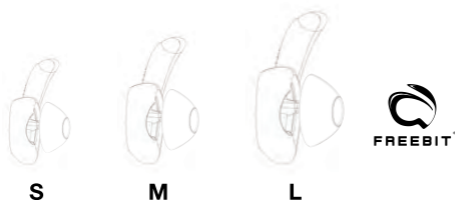
Reflect Fit

Quick Start Guide

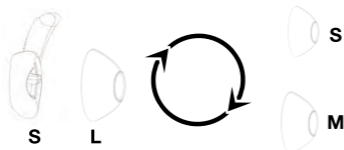
Guide de démarrage rapide

1 Customizing your fit

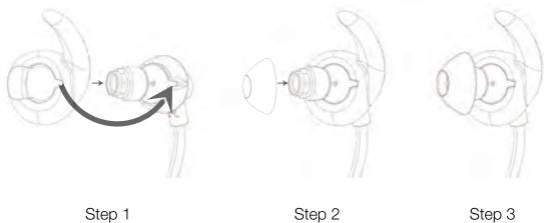
For the most secure fit and accurate heart rate reading, try each of the different ear tips to find your optimal size combination.



a) Mix and match for a custom fit.



b) Installation



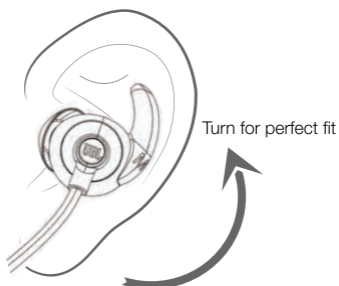
Align the winged piece with the notch, and then gently clip the oval ear tip onto the earphone.

Reflect Fit

Quick Start Guide
Guide de démarrage rapide

2 Wearing Instructions

a) Insert the ear tip and turn for perfect fit.



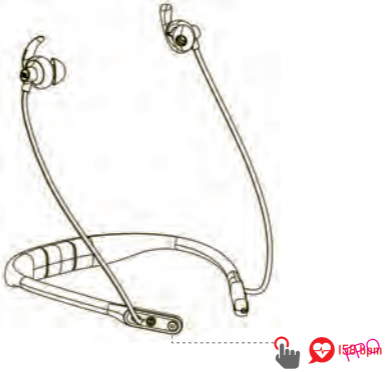
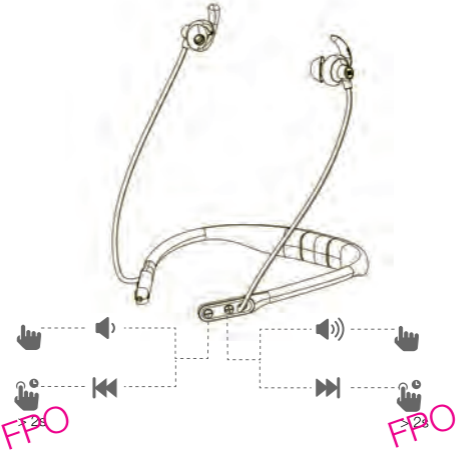
3 Power on/off



Reflect Fit

Quick Start Guide
Guide de démarrage rapide

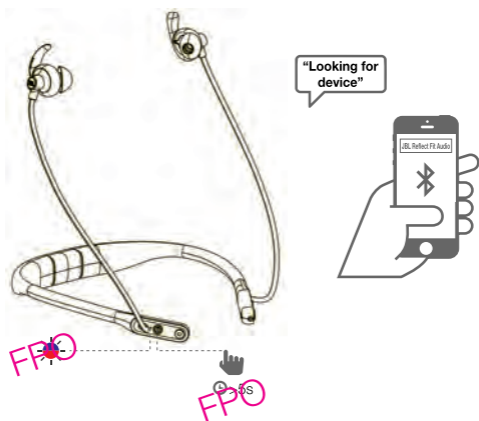
4 Buttons



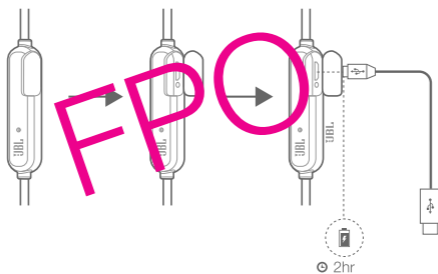
Reflect Fit

Quick Start Guide
Guide de démarrage rapide

5 Bluetooth®



6 Charging



Reflect Fit

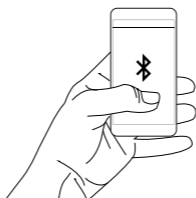
Quick Start Guide

Guide de démarrage rapide

7 Heart Rate

Your JBL Reflect Fit is compatible with fitness apps that support heart rate sensors, like MapMyRun™, Endomondo and ~~Fitbit~~.

1. Go to your phone's settings menu and enable Bluetooth.
2. With the headphones powered **ON** and your device in search mode, select **JBL Reflect Fit Audio** to connect.
3. After pairing **JBL Reflect Fit Audio**, follow the app instructions to connect the heart rate sensor.*

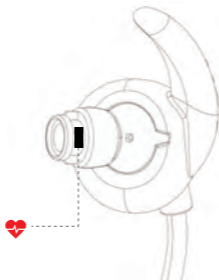


* Premium membership may be required for in-app heart rate function.

"To manually power on/off the built-in heart rate sensor, press and hold the heart rate button for 3 seconds"



4.1 Sensor is located inside the RIGHT earbud, inside the sound tunnel.



Reflect Fit

Quick Start Guide

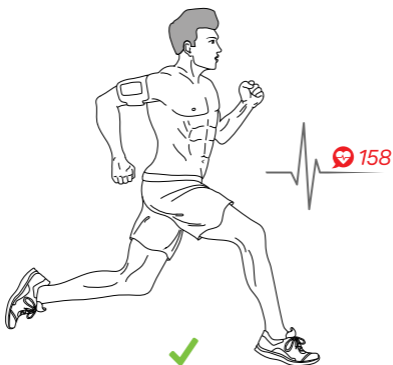
Guide de démarrage rapide

- ! For accurate heart rate reading, please keep your head still during the calibration phase (approximately 3 seconds).

Calibrating...
Heart Rate detected



⌚ = 3s

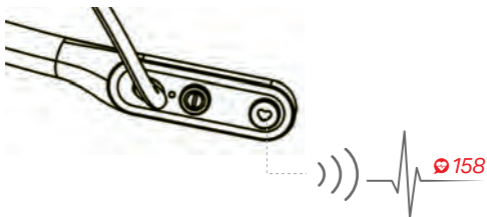


Reflect Fit

Quick Start Guide

Guide de démarrage rapide

- 4.3 Tap the heart rate button on the right side of the neckband control for an instant audible heart rate BPM reading.

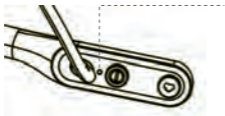


Reflect Fit

Quick Start Guide

Guide de démarrage rapide

9 LED Behavior



State	LED Behaviors
No device connected	Blue LED
Pairing mode	Blue LED with Bluetooth symbol
Device connected	Blue LED X 2
Low battery	Red LED with battery icon
Charging battery	Red LED with charging icon

État	Comportement de la DEL
Aucun appareil connecté	Blue LED
Mode d'association	Blue LED with Bluetooth symbol
Appareil connecté	Blue LED X 2
Batterie faible	Red LED with battery icon
Batterie en charge	Red LED with charging icon

Estado	Comportamientos del LED
No hay ningún dispositivo conectado	Blue LED
Modo de emparejamiento	Blue LED with Bluetooth symbol
Dispositivo conectado	Blue LED X 2
Batería baja	Red LED with battery icon
Cargando batería	Red LED with charging icon

Estado	Comportamentos LED
Nenhum dispositivo ligado	Blue LED
Modo de emparelhamento	Blue LED with Bluetooth symbol
Dispositivo ligado	Blue LED X 2
Pouca bateria	Red LED with battery icon
A carregar a bateria	Red LED with charging icon

Status	LED-Verhalten
Kein Gerät verbunden	Blue LED
Pairing-Modus	Blue LED with Bluetooth symbol
Gerät verbunden	Blue LED X 2
Batteriestand niedrig	Red LED with battery icon
Batterie wird geladen	Red LED with charging icon

Stato	Comportamenti LED
Nessun dispositivo connesso	Blue LED
Modalità di accoppiamento	Blue LED with Bluetooth symbol
Dispositivo connesso	Blue LED X 2
Batteria quasi scarica	Red LED with battery icon
Batteria in carica	Red LED with charging icon

Status	LED gedrag
Geen apparaat aangesloten	Blue LED
Verbinden modus	Blue LED with Bluetooth symbol
Apparaat aangesloten	Blue LED X 2
Accu bijna leeg	Red LED with battery icon
Accu wordt geladen	Red LED with charging icon

Tilstand	LED virkemåter
Ingen enhet tilkoblet	Blue LED
Paringsmodus	Blue LED with Bluetooth symbol
Enhet tilkoblet	Blue LED X 2
Lavt batterinivå	Red LED with battery icon
Batterilading	Red LED with charging icon

Tila	LED-valojen merkitykset
Laitte ei ole kytketty	Blue LED
Paritus-tila	Blue LED with Bluetooth symbol
Laitte kytketty	Blue LED X 2
Alhainen virtataso	Red LED with battery icon
Lataa akkua	Red LED with charging icon

Reflect Fit

Quick Start Guide

Guide de démarrage rapide

Состояние	Сигналы индикаторов
Нет подключенных устройств	
Режим сопряжения	
Устройство подключено	X 2
Аккумулятор разряжен	
Зарядка аккумулятора	

Status	LED betænden
Ingen enhet ansluten	
Laddningsläge	
Enhet ansluten	X 2
Lågt batterinivå	
Laddar batteri	

Stednavn	LED-adfærd
Ingen enhed forbundet	
Parringstilstand	
Enhed forbundet	X 2
Lavt batteriniveau	
Oplader batteri	

状態	LED の働き
機器が接続されていない	
配对モード	
機器が接続されている	X 2
低电量	
正在充电	

상태	LED 동작
연결된 장치 없음	
페어링 모드	
장치 연결됨	X 2
배터리 부족	
배터리 충전 중	

状態	LED 变化模式
未连接设备	
配对模式	
已连接设备	X 2
低电量	
正在充电	

状態	LED 行為
未連接裝置	
配对模式	
已連接裝置	X 2
電池電力不足	
正在為電池充電	

Status	Warna LED
nessun dispositivo connesso	
Mode Pairing	
Dispositivo connesso	X 2
Baterai lemah	
Mengisi baterai	

Reflect Fit

Quick Start Guide

Guide de démarrage rapide

EN

- Premium 5.8mm Dynamic Driver
- Frequency Response: 20Hz-20kHz
- Connection: Micro USB cable for charging
- Support: BT 4.1, A2DP v1.3, AVRCP v1.6, HFP v1.6, HSP v1.2
- Bluetooth transmitter frequency range: 2.402 - 2.480GHz
- Bluetooth transmitter power: < 4dBm
- Bluetooth transmitter modulation: GFSK $\pi/4$ DQPSK, 8DPSK
- Battery type: Rechargeable Lithium Ion rectangle Cell (3.7V 200mAh)

FR

- Haut-parleur dynamique haut de gamme 5,8 mm
- Réponse en fréquence : 20 Hz - 20 kHz
- Connexion : câble de charge micro USB
- Support : BT 4.1, A2DP v1.3, AVRCP v1.6, HFP v1.6, HSP v1.2
- Plage de fréquences de l'émetteur Bluetooth : 2,402-2,480 GHz
- Puissance de l'émetteur Bluetooth : < 4 dBm
- Modulation de l'émetteur Bluetooth : GFSK $\pi/4$ DQPSK 8DPSK
- Type de batterie : Cellule rectangulaire lithium-ion rechargeable (3,7 V, 200 mAh)

ES

- Transductor dinámico premium de 5,8 mm
- Respuesta de frecuencia: 20 Hz - 20 kHz
- Conexión: Cable de carga micro USB
- Compatibilidad: BT 4.1, A2DP v1.3, AVRCP v1.6, HFP v1.6, HSP v1.2
- Alcance de frecuencia del transmisor Bluetooth: 2.402 - 2.480 GHz
- Potencia del transmisor Bluetooth: < 4dBm
- Modulación del transmisor Bluetooth: GFSK $\pi/4$ DQPSK 8DPSK
- Tipo de batería: Celda rectangular de ion litio recargable (3,7 V 200 mAh)

PT

- Driver dinâmico de 5,8 mm de qualidade superior
- Resposta em frequência: 20 Hz - 20 kHz
- Conexão: Cabo de carregamento micro USB
- Suporte: BT 4.1, A2DP v1.3, AVRCP v1.6, HFP v1.6, HSP v1.2
- Gama de frequências do transmissor Bluetooth: 2,402 - 2,480 GHz
- Potência do transmissor Bluetooth: < 4 dBm
- Modulação do transmissor Bluetooth: GFSK $\pi/4$ DQPSK, 8DPSK
- Tipo de bateria: Bateria de íon de lítio recarregável tipo célula retangular (3,7 V 200 mAh)

Reflect Fit

Quick Start Guide

Guide de démarrage rapide

DE

- Hochwertiger 5,8mm-Dynamik-Lautsprecher
- Frequenzbereich: 20Hz-20kHz
- Anslutning: Micro USB-ladningskabel
- Unterstützung: BT 4.1, A2DP v1.2, AVRCP v1.6, HFP v1.6, HSP v1.2
- Frequenzbereich für die Bluetooth-Übertragung: 2,402 -2,480GHz
- Bluetooth-Übertragungsleistung: < 4dBm
- Bluetooth-Übertragungsmodulation: GFSK, $\pi/4$ DQPSK, 8DPSK
- Batterietyp: Rechteckige wiederaufladbare Lithium-Ionen-Zelle (3,7V, 200mAh)

NL

- Hoofwaardige 5.8mm Dynamic Driver
- Frequentiebereik: 20Hz-20kHz
- Micro USB-oplaadkabel
- Ondersteund: BT 4.1, A2DP v1.3, AVRCP v1.6, HFP v1.6, HSP v1.2
- Bluetooth transmitter frequentiebereik: 2.402 -2.480GHz
- Bluetooth transmitter vermogen: < 4dBm
- Bluetooth transmitter modulatie: GFSK, $\pi/4$ DQPSK, 8DPSK
- Type batterij: Oplaadbare rechthoekige lithium-ion knoopcel batterij (3.7V 200mAh)

IT

- Driver Dinamico Premium da 5.8mm
- Risposta in frequenza: 20Hz-20kHz
- Collegamento: cavo di ricarica Micro USB
- Supporta: BT 4.1, A2DP v1.3, AVRCP v1.6, HFP v1.6, HSP v1.2
- Gamma di frequenza trasmettitore Bluetooth: 2.402 -2.480GHz
- Potenza trasmettitore Bluetooth: < 4dBm
- Modulazione trasmettitore Bluetooth: GFSK, $\pi/4$ DQPSK, 8DPSK
- Tipo di batteria: Cella rettangolare agli ioni di litio ricaricabile (3,7V 200 mAh)

NO

- Premium 5,8 mm dynamisk driver
- Frekvensområde: 20 Hz-20k Hz
- Tilkobling: kabel for lading via Mikro-USB
- Støtter: BT 4.1, A2DP v1.3, AVRCP v1.6, HSP v1.2, HFP v1.6
- Bluetooth-senderens frekvensområde: 2,402-2,480 GHz
- Bluetooth-senderens effekt: < 4 dBm
- Bluetooth-senderens modulering: GFSK, $\pi/4$ DQPSK, 8DPSK
- Batteritype: Oppladbart Lithium Ion rektangulær celle (3,7V 200mAh)

Reflect Fit

Quick Start Guide

Guide de démarrage rapide

FI

- Ensiluokkainen 5,8 mm:n dynaaminen elementti
- Taajuusvaste: 20Hz-20kHz
- Liitäntä: Mikro-USB-lataus kaapeli
- Tuki: BT 4.1, A2DP v1.3, AVRCP v1.6, HFP v1.6, HSP v1.2
- Bluetooth-lähettimen taajuusalue: 2,402 -2,480GHz
- Bluetooth-lähettimen teho: < 4 dBm
- Bluetooth-lähettimen modulaatio: GFSK, $\pi/4$ DQPSK, 8DPSK
- Paristotyyppi: Ladattava Lithium Ion suorakulmainen kenno (3.7V 200mAh)

SV

- Premium 5,8 mm dynamiskt element
- Frekvensomfång: 20 Hz - 20 kHz
- Anslutning: Micro USB-laddningskabel
- Stöd för: BT 4.1, A2DP v1.3, AVRCP v1.6, HFP v1.6, HSP v1.2
- Bluetooth-sändarens frekvensomfång: 2.402 -2.480 GHz
- Bluetooth-sändarens effekt: < 4 dBm
- Bluetooth-sändarens modulering: GFSK, $\pi/4$ DQPSK, 8DPSK
- Batterityp: Uppladdningsbart litiumjon rektangulärt cellbatteri (3,7 V 200 mAh)

RU

- Высококачественная 5,8-мм динамическая мембрана
- Частотная характеристика: 20 Гц-20 КГц
- Соединения: Micro-USB кабель для зарядки
- Поддерживаемые протоколы: BT 4.1, A2DP v1.3, AVRCP v1.6, HFP v1.6, HSP v1.2
- Частотный диапазон передатчика Bluetooth: 2402-2480 ГГц
- Мощность передатчика Bluetooth: макс. 4 дБ/мВт
- Модуляция передатчика Bluetooth: гаусс. част. модул. $\pi/4$ относ. квадрат. фаз. модул. относ. восьмер. фаз. модул.
- Тип аккумулятора: перезаряжаемый ионно-литиевый цилиндрический элемент (3,7 В, 200 мА*ч)

DA

- 5,8 mm dynamiske enheder af premiumkvalitet
- Frekvensområde: 20 Hz - 20 kHz
- Tilkobling: kabel for lading via Mikro-USB
- Support: BT 4.1, A2DP v1.3, AVRCP v1.6, HFP v1.6, HSP v1.2
- Frekvensområde for Bluetooth-transmitter: 2.402-2.480GHz
- Bluetooth-sende effekt: < 4 dBm
- Bluetooth-sendemodulation: GFSK, $\pi/4$ DQPSK, 8DPSK
- Batteritype: Genopladelig rektangulær Li-ioncelle (3,7 V 200 mAh)

Reflect Fit

Quick Start Guide

Guide de démarrage rapide

JP

- 高品質の5.8mmダイナミックドライバー
- 周波数特性:20Hz~20kHz
- 接続: マイクロUSB充電ケーブル
- サポート: BT4.1、A2DP v1.3、AVRCP v1.6、HFP v1.6、HSP v1.2
- Bluetoothトランスミッター 周波数帯域: 2.402~2.480GHz
- Bluetooth対応トランスミッター 出力: < 4dBm
- Bluetooth対応トランスミッター 変調: GFSK、 $\pi/4$ DQPSK、8DPSK
- バッテリーの種類: 再充電可能リチウムイオン角形電池 (3.7V 200mAh)

KO

- 프리미엄 5.8mm 다이내믹 드라이버
- 주파수 응답: 20Hz -20kHz
- 연결: 마이크로 USB 충전 케이블
- 지원: BT 4.1, A2DP v1.3, AVRCP v1.6, HFP v1.6, HSP v1.2
- 블루투스 트랜스미터 주파수 범위: 2.402-2.480GHz
- 블루투스 트랜스미터 전력: <4dBm
- 블루투스 트랜스미터 변조: GFSK, $\pi/4$ DQPSK, 8DPSK
- 배터리의 종류: 재충전 가능 리튬이온 각형 배터리 (3.7V 200mAh)

CHS

- 优质的 5.8mm 动态驱动器
- 频率响应: 20Hz-20kHz
- 连接: Micro USB 充电电线
- 支持: BT 4.1、A2DP v1.3、AVRCP v1.6、HFP v1.6、HSP v1.2
- 蓝牙发射器频率范围: 2.402 - 2.480GHz
- 蓝牙发射器功率: < 4dBm
- 蓝牙发射器调制: GFSK, $\pi/4$ DQPSK, 8DPSK
- 电池类型: 长方形锂离子充电电池 (3.7V 200mAh)

Reflect Fit

Quick Start Guide

Guide de démarrage rapide

Торговая марка	: JBL
Назначение товара	: ПОЛЬЗОВАТЕЛЬСКИЕ НАУШНИКИ
Изготовитель	: ХАРМАН ИНТЕРНЭШНЛ ПЕРФОРМАНС ПРАСТРИЗ ИНКОРПОРЕЙТЭД, США, 06900 ХОННЕКТИКУТ, г.СТЭМФОРД АТЛАНТИК СТРИТ 100, ОФИС 1500
Страна происхождения	: Китай
Импортер в Россию	: ООО "ХАРМАН РУС СиАйЭс", РОССИЯ, 127018, г.МОСКВА, УЛ.ДВИНЦЕВ, Д.12, КОРПУС 1
Гарантийный период	: 2 года
Информация о сервисных центрах	: www.harman.com/ru или 8-800-700-0467
Срок службы	: 2 года
Срок хранения	: не ограничен
Условия хранения климатических	: стандартные при нормальных значениях факторов внешней среды
Номер документа соответствия	: Товар не подлежит обязательной сертификации
Дата производства	: Дата изготовления устройства определяется по двум буквенным обозначениям из второй группы символов серийного номера изделия, следующих после разделительного знака «-». Кодировка соответствует порядку букв латинского алфавита, начиная с января 2010 года: 000000-MY00000000, где «М» - месяц производства (А - январь, В - февраль, С - март и т.д.) и «Y» - год производства (А - 2010, В - 2011, С - 2012 и т.д.).

Reflect Fit

Quick Start Guide

Guide de démarrage rapide



Este equipamento opera em caráter secundário, isto é, não tem direito a proteção contra interferência prejudicial, mesmo de estações do mesmo tipo, e não pode causar interferência a sistemas operando em caráter primário”

Este produto está homologado pela ANATEL, de acordo com os procedimentos regulamentados pela Resolução 242/2000, e atende aos requisitos técnicos aplicados.

Para maiores informações, consulte o site da ANATEL - www.anatel.gov.br



The Bluetooth® word mark and logos are registered trademarks owned by Bluetooth SIG, Inc. and any use of such marks by HARMAN International Industries, Incorporated is under license. Other trademarks and trade names are those of their respective owners.

CE 0890

FCC WARNING

This device complies with part 15 of the FCC Rules. Operation is subject to the following two conditions: (1) this device may not cause harmful interference, and (2) this device must accept any interference received, including interference that may cause undesired operation.

Any changes or modifications not expressly approved by the party responsible for compliance could void the user's authority to operate the equipment.

NOTE: This equipment has been tested and found to comply with the limits for a Class B digital device, pursuant to Part 15 of the FCC Rules. These limits are designed to provide reasonable protection against harmful interference in a residential installation. This equipment generates, uses and can radiate radio frequency energy and, if not installed and used in accordance with the instructions, may cause harmful interference to radio communications. However, there is no guarantee that interference will not occur in a particular installation.

If this equipment does cause harmful interference to radio or television reception, which can be determined by turning the equipment off and on, the user is encouraged to try to correct the interference by one or more of the following measures:

- Reorient or relocate the receiving antenna.
- Increase the separation between the equipment and receiver.
- Connect the equipment into an outlet on a circuit different from that to which the receiver is connected.
- Consult the dealer or an experienced radio/TV technician for help.

The device has been evaluated to meet general RF exposure requirement. The device can be used in portable exposure condition without restriction.

FCC ID: APIJBLFIT