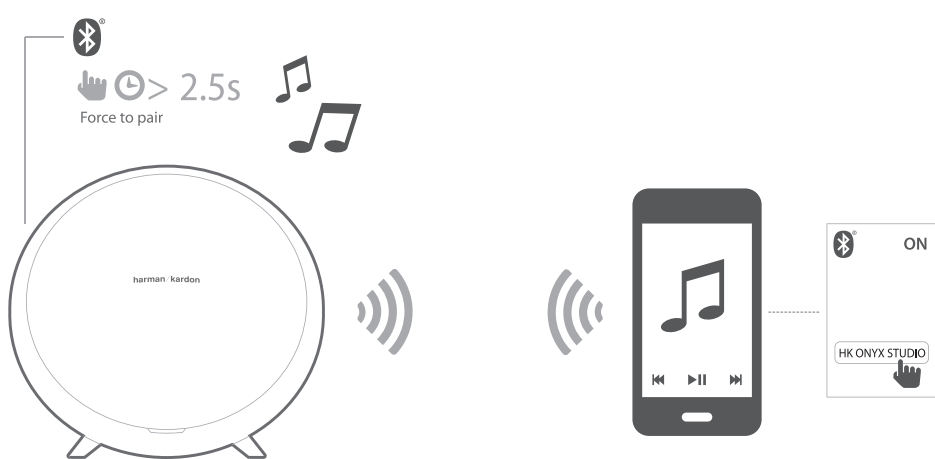
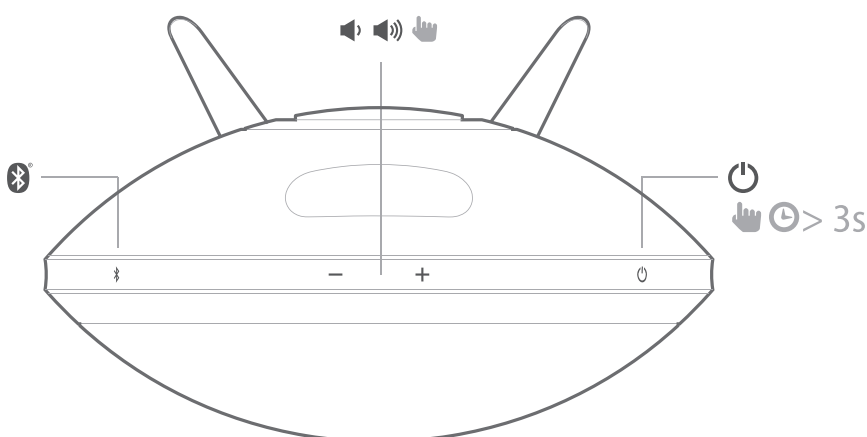


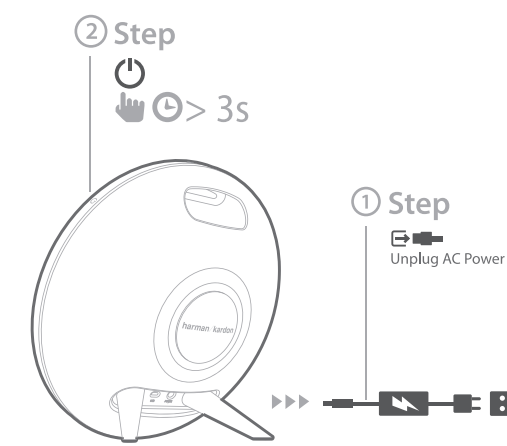
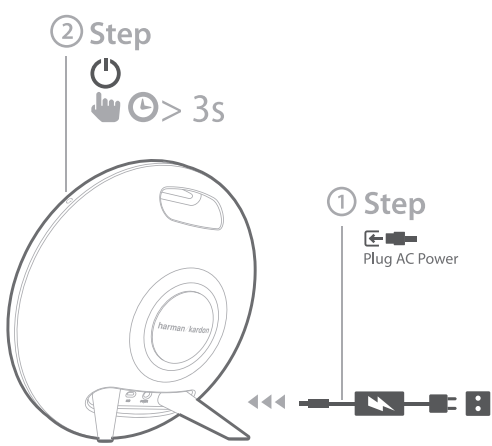


ONYX STUDIO

ONYX STUDIO



AC Power ↔ Rechargeable Battery



Full owners manual

Propriétaires complètes manuelles
Proprietari manuale completo
Proprietarios completos manuales
Ausführliche Anleitung
Полный Инструкции



ONYX STUDIO

Quick Start Guide
Guide de démarrage rapide

EN

- No. of channels: 4
- Transducers: 2 x 3" woofers, 2 x ¾" tweeters, 2 x passive radiators
- Bi-amplification: 4 x 15W
- Maximum SPL: 95dB @ 1m
- Power requirement: 100 – 240V AC, 50/60Hz
- Power adaptor: 19V, 2.0A
- Built in battery: 3.7V, 2600mAh, Cylindrical Lithium Ion Rechargeable Battery
- Power consumption: 38W maximum <1W standby
- Speaker Impedance: 4 ohm per speaker
- Frequency response: 60Hz ~ 20kHz
- Frequency range: 2402MHz ~ 2480MHz
- Transmitter power: <4dBm
- Modulation: GFSK/π/4-DQPSK/8-DPSK
- Wireless: Bluetooth 3.0 A2DP v1.3 AVRCP v1.5
- Dimensions (Dia x W x H): 280mm x 161mm x 260mm

FR

- Nbre de canaux: 4
- Transducteurs: 2 x haut-parleurs graves 3", 2 x haut-parleurs aigus ¾", 2 x radiateurs passifs
- Bi-amplification: 4 x 15 W
- Pression sonore max: 95 dB à 1 m
- Alimentation électrique requise: 100 V – 240 V CA, 50/60 Hz
- Adaptateur d'alimentation: 19V, 2.0A
- Batterie intégrée: 3.7V, 2600mAh Lithium
- Consommation électrique: 38W maximum <1W standby
- Impédance des haut-parleurs: 4 ohms par haut-parleur
- Réponse en fréquences: 60 Hz à 20 kHz
- Plage de fréquences: 2402 MHz à 2480 MHz
- Puissance du transmetteur: < 4 dBm
- Modulation: GFSK/π/4-DQPSK/8-DPSK
- Sans fil: Bluetooth 3.0 A2DP v1.3 AVRCP v1.5
- Dimensions (Dia x P x H): 280mm x 161mm x 260mm

ES

- Nº de canales: 4
- Transductores: 2 woofers de 3", 2 altavoces de agudos de ¾", 2 radiadores pasivos
- Bi-amplificación: 4 x 15W
- SPL máximo: 95 dB @ 1 m
- Requisitos de alimentación: 100 V – 240 V AC, 50/60 Hz
- Adaptador de alimentación: 19V, 2.0A
- Batería integrada: Litio 3.7V, 2600 mAh
- Consumo de energía: 38W máximo <1W en espera
- Impedancia del altavoz: 4 ohmios por altavoz
- Intervalo de frecuencias: 60 Hz ~ 20 kHz
- Intervalo de frecuencias: 2402 MHz ~ 2480 MHz
- Potencia del transmisor: < 4 dBm
- Modulación: GFSK/π/4-DQPSK/8-DPSK
- Inalámbrico: Bluetooth 3.0 A2DP v1.3 AVRCP v1.5
- Dimensiones (Alto x Ancho x Profundidad): 280mm x 161mm x 260mm

PT

- Nº de canais: 4
- Transdutores: 2 x woofers de 3", 2 x tweeters de ¾", 2 x radiadores passivos
- Bi-amplificação: 4 x 15 W
- Nível máximo de pressão sonora: 95 dB @ 1 m
- Requisitos de alimentação: 100 – 240 V CA, 50/60 Hz
- Transformador: 19V, 2.0A
- Bateria incorporada: Litio 3.7V, 2600 mAh
- Consumo de energia: 38W no máximo, <1 W em espera
- Impedância das colunas: 4 ohms por coluna
- Resposta em frequência: 60 Hz ~ 20 kHz
- Gama de frequências: 2402 MHz ~ 2480 MHz
- Potência do transmissor: < 4 dBm
- Modulação: GFSK/π/4-DQPSK/8-DPSK
- Sem fios: Bluetooth 3.0 A2DP v1.3 AVRCP v1.5
- Dimensões (Diâm. x L x A): 280mm x 161mm x 260mm