

JBL SOUNDFLY™ AIR

Plug-in AirPlay speaker

QUICK SETUP GUIDE

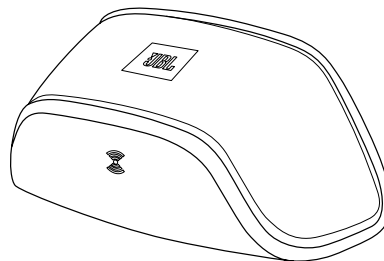


WELCOME

Thank you for purchasing the JBL Soundfly™ Air plug-in AirPlay speaker. Soundfly Air will fill your room with sound from your iPod, iPhone, iPad, Mac or PC computer with iTunes, while plugging directly into an AC outlet and remaining practically invisible.

INCLUDED ITEMS

JBL Soundfly Air Unit



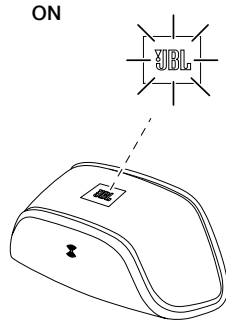
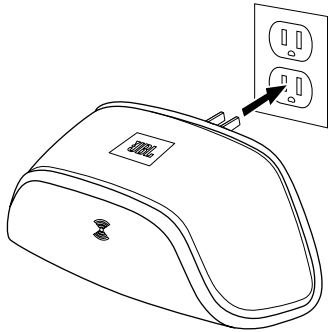
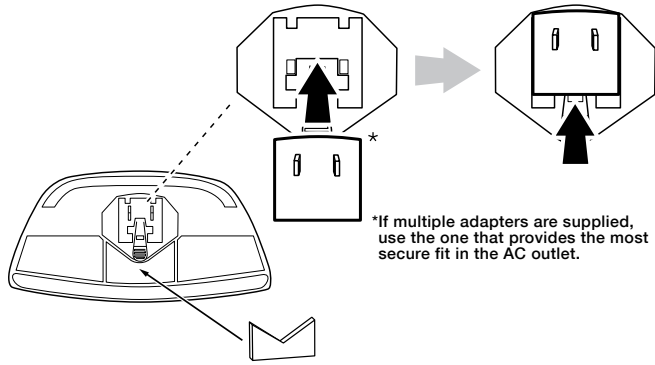
AC Plug Adapter
(varies with region)



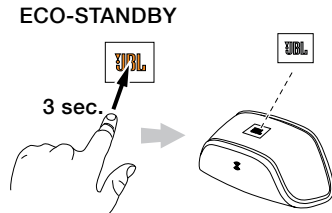
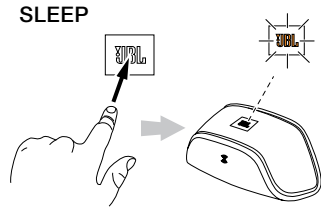
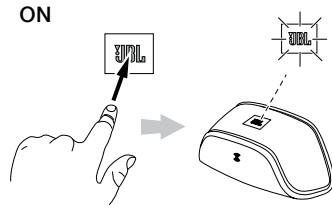
Support Pad
(varies with region)



PLUG SOUNDFLY AIR INTO AN AC OUTLET



TURNING SOUNDFLY AIR ON AND OFF



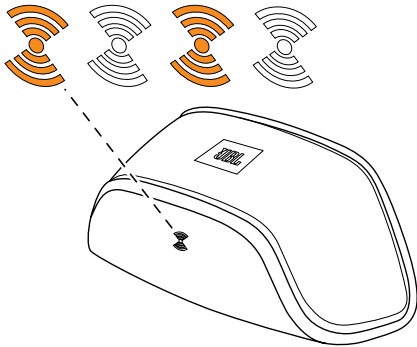
Note: Soundfly Air will automatically enter the Sleep mode after 10 minutes of inactivity.

JOIN SOUNDFLY AIR WITH YOUR WI-FI® NETWORK

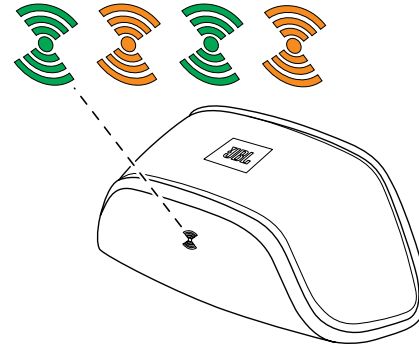
Before you can stream audio to your Soundfly Air via AirPlay, you will need to join your Soundfly Air with your home Wi-Fi® network. You will only need to perform this operation one time.

IMPORTANT: Before performing the following steps, be sure your home Wi-Fi network is operating.

1. Make sure the Wi-Fi logo button's LED is flashing amber.



2. Touch the Wi-Fi logo button for at least three seconds. The button's LED will alternately flash green and amber and Soundfly Air will be in the Connect mode.



3. Open your iPod's, iPhone's or iPad's Wi-Fi settings page and connect to the "JBL Soundfly" network.

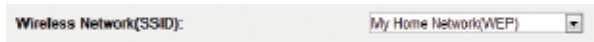
Select "JBL Soundfly" Network



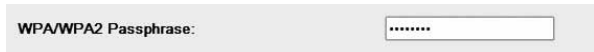
4. Once the iPod, iPhone or iPad is connected to the “JBL Soundfly Air” network, open the device’s Web browser (Safari, Firefox, Internet Explorer, etc.) and enter the following Web address: 192.168.1.1. This address will display the JBL Soundfly Air’s Setup page.



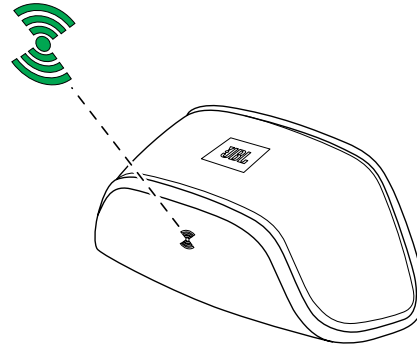
- In the “Wireless Network SSID” drop-down box, select your home Wi-Fi network’s name.



- If your network requires a password, enter it in the “WPA/WPA2 Passphrase” field.



5. Once the configuration is complete, Soundfly Air will connect to your home Wi-Fi network, and its Wi-Fi button LED will change to solid green.



IMPORTANT: Restore your iPod, iPhone or iPad Wi-Fi settings back to your home Wi-Fi network.

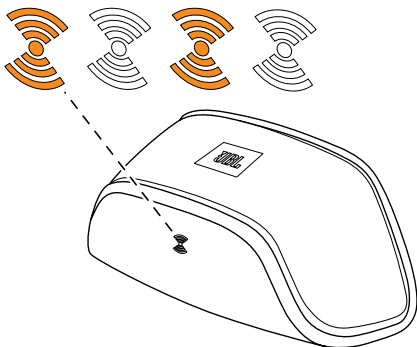
**Restore Device
to Your Home
Wi-Fi Network**



You're now ready to enjoy AirPlay streaming audio from your iOS device!

IF THE WI-FI CONNECTION WAS UNSUCCESSFUL

If Soundfly Air was unable to connect to your Wi-Fi network, the Wi-Fi logo button LED will flash amber.



If this happens:

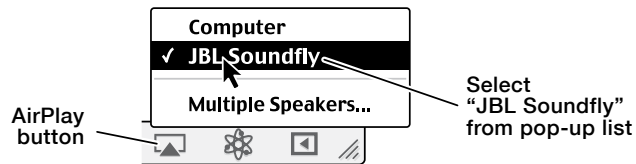
- Touch the Wi-Fi button for more than three seconds to begin the connection process again.
- Repeat steps 2 – 5 to connect to your Wi-Fi network.

STREAM AUDIO TO SOUNDFLY AIR

Your JBL Soundfly Air can play audio files or an Internet radio station that is streaming from iTunes 10.1 (or newer) on a networked computer, or from an iPod, iPhone or iPad with iOS 4.2 or later.

NOTE: Before you can begin AirPlay streaming, the JBL Soundfly Air must be joined in the Wi-Fi network. (See *Join Soundfly Air With Your Wi-Fi Network*, on page 3.)

To initiate streaming from the computer, launch iTunes, click on the AirPlay button that appears at the bottom of the iTunes window, and select “JBL Soundfly Air” in the pop-up list that appears.



To initiate streaming from an iPod, iPhone or iPad tap the AirPlay button on the screen and select “JBL Soundfly Air” in the speaker-selection list that appears.

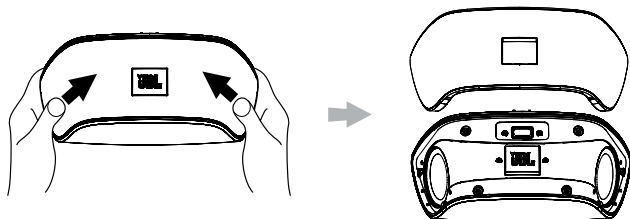
- If Soundfly Air is in the Sleep mode when you press Play in iTunes or on the iPod, iPhone or iPad, Soundfly Air will automatically turn on, and begin playing the streaming audio.

USING THE SOUNDFLY APP'S EASY SETUP FUNCTION

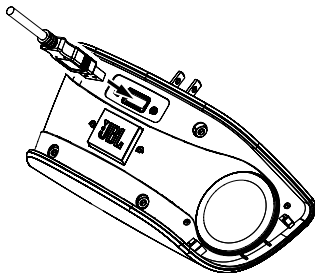
The free JBL Soundfly App has an easy setup function that simplifies Soundfly Air's Wi-Fi setup procedure.

- Visit the iTunes App Store and download the JBL Soundfly Air app into your iPod, iPhone or iPad.

2. Unplug Soundfly Air from the wall outlet and remove its grille as shown below.



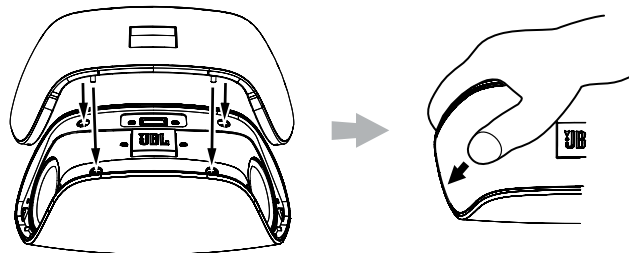
3. Connect your iPod, iPhone or iPad to Soundfly Air's USB port.



4. Plug Soundfly Air back into the wall outlet and wait until the power LED illuminates solid white.
5. Launch the Soundfly Air app on your iPod, iPhone or iPad, and select "Easy Setup."

6. Follow the prompts in the app to complete the Wi-Fi setup.

7. Remove Soundfly Air from the wall outlet, remove the USB cable from Soundfly Air and replace the grille as shown below.



8. Plug Soundfly Air back into the wall outlet. After the power LED illuminates solid white the Wi-Fi LED should illuminate solid green to indicate that Soundfly Air is joined with your Wi-Fi network.

NOTE: The JBL Soundfly App also allows you to change the EQ setting to get the best sound wherever you plug in Soundfly Air.


TROUBLESHOOTING

SYMPTOM	POSSIBLE PROBLEM	SOLUTION	NOTE
No sound (Power button LED is not illuminated)	Faulty AC connection	Make sure that Soundfly Air is plugged into a working AC outlet.	The Power button LED glows white or amber when the unit is receiving AC power.
No sound (Power button LED glows amber.)	Soundfly Air is in Sleep mode.	Touch the Power button.	The Power button LED glows white when the unit is on.
No sound (Power button LED glows white.)	Soundfly Air is not joined with your home Wi-Fi network.	Join Soundfly Air with your home Wi-Fi network. See <i>Join Soundfly Air With Your Wi-Fi Network</i> , on page 3.	The Wi-Fi LED illuminates solid green when Soundfly Air is joined with a Wi-Fi network.
	The iOS device is out of range of Soundfly Air	Move the device closer to Soundfly Air.	Soundfly Air's operational range is approximately 33 feet (10m).
Sound crackles, hisses or is distorted	The iOS device is overloading Soundfly Air.	<ul style="list-style-type: none"> • Turn down the volume on the iOS device. • Set the EQ on the device to "Off". 	
Loud hum or buzzing	There is a ground loop with the AC wiring.	<ul style="list-style-type: none"> • Unplug Soundfly Air and plug it into a different AC outlet. 	

SPECIFICATIONS

Amplifier power:	10 watts x 2
Frequency response:	60Hz – 20kHz
Signal-to-noise ratio:	80dB
Power requirement:	100V – 240V AC, 50Hz/60Hz
Power consumption:	<0.5W (standby); 30W (maximum)
Dimensions (W x H x D):	7-1/2" x 2-13/16" x 3-5/8" (71mm x 92mm x 190mm)
Weight:	0.9 lb (0.42kg)

IMPORTANT SAFETY INSTRUCTIONS

1. Read these instructions.
2. Keep these instructions.
3. Heed all warnings.
4. Follow all instructions.
5. Do not use this apparatus near water.
6. Clean only with dry cloth.
7. Do not block any ventilation openings. Install in accordance with the manufacturer's instructions.
8. Do not install near any heat sources such as radiators, heat registers, stoves, or other apparatus (including amplifiers) that produce heat.
9. Do not defeat the safety purpose of the polarized or grounding-type plug. A polarized plug has two blades with one wider than the other. A grounding-type plug has two blades and a third grounding prong. The wide blade or third prong is provided for your safety. If the provided plug does not fit into your outlet, consult an electrician for replacement of the obsolete outlet.
10. Protect the power cord from being walked on or pinched, particularly at the plugs, convenience receptacles and the point where they exit from the apparatus.
11. Only use attachments/accessories specified by the manufacturer.
12. Use only with the cart, stand, tripod, bracket or table specified by the manufacturer or sold with the apparatus. When a cart is used, use caution when moving the cart/apparatus combination to avoid injury from tip-over.
 
13. Unplug this apparatus during lightning storms or when unused for long periods of time.
14. Refer all servicing to qualified service personnel. Servicing is required when the apparatus has been damaged in any way, such as: when the power supply cord or plug has become damaged, when liquid has been spilled or objects have fallen into the apparatus, when the apparatus has been exposed to rain or moisture, when the apparatus does not operate normally, or the apparatus has been dropped.
15. Do not expose this apparatus to dripping or splashing and ensure that no objects filled with liquids, such as vases, are placed on the apparatus.
16. To completely disconnect this apparatus from the AC mains, disconnect the power supply cord plug from the AC receptacle.
17. The mains plug of the power supply cord shall remain readily operable.
18. Do not expose batteries to excessive heat such as sunshine, fire or the like.

 <p>THE LIGHTNING FLASH WITH AN ARROWHEAD SYMBOL WITHIN AN EQUILATERAL TRIANGLE, IS INTENDED TO ALERT THE USER TO THE PRESENCE OF UNINSULATED "DANGEROUS VOLTAGE" WITHIN THE PRODUCT'S ENCLOSURE THAT MAY BE OF SUFFICIENT MAGNITUDE TO CONSTITUTE A RISK OF ELECTRIC SHOCK TO PERSONS.</p>	<p style="text-align: center;">CAUTION</p> <p style="text-align: center;">RISK OF ELECTRIC SHOCK DO NOT OPEN</p> <hr/> <p style="text-align: center;">WARNING: TO REDUCE THE RISK OF FIRE OR ELECTRIC SHOCK, DO NOT EXPOSE THIS APPARATUS TO RAIN OR MOISTURE.</p>	 <p>THE EXCLAMATION POINT WITHIN AN EQUILATERAL TRIANGLE IS INTENDED TO ALERT THE USER TO THE PRESENCE OF IMPORTANT OPERATING AND MAINTENANCE SERVICING INSTRUCTIONS IN THE LITERATURE ACCOMPANYING THE PRODUCT.</p>
--	---	---

FCC AND IC REGULATIONS (USA AND CANADA ONLY)

FCC AND IC INFORMATION FOR USERS

This device complies with Part 15 of the FCC rules and Industry Canada license-exempt RSS 210. Operation is subject to the following two conditions: (1) This device may not cause harmful interference; and (2) this device must accept any interference received, including interference that may cause undesired operation.

RADIO AND TELEVISION INTERFERENCE

This equipment has been tested and found to comply with the limits for a Class B digital device, pursuant to Part 15 of the FCC rules. These limits are designed to provide reasonable protection against harmful interference in a residential installation. This equipment generates, uses and can radiate radio frequency energy and, if not installed and used in accordance with the instructions, may cause harmful interference to radio communications. However, there is no guarantee that interference will not occur in a particular installation. If this equipment does cause interference to radio or television reception, which can be determined by turning the equipment off and then on, the user is encouraged to try to correct the interference by one or more of the following measures:

- Increase the separation between the equipment and the receiver.
- Connect the equipment to a different outlet so that the equipment and receiver are on different branch circuits.
- Consult the dealer or an experienced radio/ TV technician for help.

NOTE: Changes or modifications not expressly approved by HARMAN could void the user's authority to operate the equipment.

IC STATEMENT AND WARNING (CANADA ONLY)

This Class B digital apparatus complies with Canadian ICES-003. Cet appareil numérique de la classe B est conforme à la norme NMB-003 du Canada.

Hereby, HARMAN International Industries, Incorporated declares that this JBL SOUNDFLY AIR is in compliance with the essential requirements and other relevant provisions of Directive 1999/5/EC, ErP 2009/125/EC Directive and RoHS 2011/65/EU Directive. The declaration of conformity may be consulted at the support section of our Web site, accessible from www.jbl.com.



HARMAN HARMAN International Industries, Incorporated
8500 Balboa Boulevard, Northridge, CA 91329 USA

© 2012 HARMAN International Industries, Incorporated. All rights reserved.

JBL is a trademark of HARMAN International Industries, Incorporated, registered in the United States and/or other countries. Soundfly is a trademark of HARMAN International Industries, Incorporated.

AirPlay, iPad, iPhone and iPod are trademarks of Apple Inc., registered in the U.S. and other countries. “Made for iPod,” “Made for iPhone” and “Made for iPad” mean that an electronic accessory has been designed to connect specifically to iPod, iPhone and iPad, respectively, and has been certified by the developer to meet Apple performance standards. Apple is not responsible for the operation of this device or its compliance with safety and regulatory standards. iPod/iPhone/iPad not included.

Wi-Fi and the Wi-Fi Certified logo are registered trademarks of the Wi-Fi Alliance. Wi-Fi Certified is a trademark of the Wi-Fi Alliance.


Features, specifications and appearance are subject to change without notice.

Part No. JBLP3272 Rev.: A

IMPORTANT SAFETY INSTRUCTIONS



FOR ALL PRODUCTS:

1. Read these instructions.
2. Keep these instructions.
3. Heed all warnings.
4. Follow all instructions.
5. Do not use this apparatus near water.
6. Clean only with a dry cloth.
7. Do not block any ventilation openings. Install this apparatus in accordance with the manufacturer's instructions.
8. Do not install this apparatus near any heat sources such as radiators, heat registers, stoves or other apparatus (including amplifiers) that produce heat.
9. Do not defeat the safety purpose of the polarized or grounding-type plug. A polarized plug has two blades with one wider than the other. A grounding-type plug has two blades and a third grounding prong. The wide blade or the third prong is provided for your safety. If the provided plug does not fit into your outlet, consult an electrician for replacement of the obsolete outlet.
10. Protect the power cord from being walked on or pinched, particularly at plugs, convenience receptacles and the point where they exit from the apparatus.
11. Use only attachments/accessories specified by the manufacturer.
12. Use only with the cart, stand, tripod, bracket or table specified by the manufacturer or sold with the apparatus. When a cart is used, use caution when moving the cart/apparatus combination to avoid injury from tip-over. 
13. Unplug this apparatus during lightning storms or when unused for long periods of time.
14. Refer all servicing to qualified service personnel. Servicing is required when the apparatus has been damaged in any way, such as when the power-supply cord or plug is damaged, liquid has been spilled or objects have fallen into the apparatus, or the apparatus has been exposed to rain or moisture, does not operate normally or has been dropped.
15. Do not expose this apparatus to dripping or splashing, and ensure that no objects filled with liquids, such as vases, are placed on the apparatus.
16. To disconnect this apparatus from the AC mains completely, disconnect the power-supply cord plug from the AC receptacle.
17. The mains plug of the power-supply cord shall remain readily operable.
18. Do not expose batteries to excessive heat such as sunshine, fire or the like.

CAUTION

RISK OF ELECTRIC SHOCK. DO NOT OPEN.



THE LIGHTNING FLASH WITH AN ARROWHEAD SYMBOL, WITHIN AN EQUILATERAL TRIANGLE, IS INTENDED TO ALERT THE USER TO THE PRESENCE OF UNINSULATED "DANGEROUS VOLTAGE" WITHIN THE PRODUCT'S ENCLOSURE THAT MAY BE OF SUFFICIENT MAGNITUDE TO CONSTITUTE A RISK OF ELECTRIC SHOCK TO PERSONS.



THE EXCLAMATION POINT WITHIN AN EQUILATERAL TRIANGLE IS INTENDED TO ALERT THE USER TO THE PRESENCE OF IMPORTANT OPERATING AND MAINTENANCE (SERVICING) INSTRUCTIONS IN THE LITERATURE ACCOMPANYING THE PRODUCT.

WARNING: TO REDUCE THE RISK OF FIRE OR ELECTRIC SHOCK, DO NOT EXPOSE THIS APPARATUS TO RAIN OR MOISTURE.

FCC AND IC STATEMENT FOR USERS (USA AND CANADA ONLY)

This device complies with part 15 of the FCC Rules. Operation is subject to the following two conditions: (1) This device may not cause harmful interference, and (2) this device must accept any interference received, including interference that may cause undesired operation.

This Class B digital apparatus complies with Canadian ICES-003.

Cet appareil numérique de la classe B est conforme à la norme NMB-003 du Canada.

FEDERAL COMMUNICATION COMMISSION INTERFERENCE STATEMENT

This equipment has been tested and found to comply with the limits for a Class B digital device, pursuant to Part 15 of the FCC Rules. These limits are designed to provide reasonable protection against harmful interference in a residential installation. This equipment generates, uses and can radiate radio frequency energy and, if not installed and used in accordance with the instructions, may cause harmful interference to radio communications. However, there is no guarantee that interference will not occur in a

particular installation. If this equipment does cause harmful interference to radio or television reception, which can be determined by turning the equipment off and on, the user is encouraged to try to correct the interference by one or more of the following measures:

- Reorient or relocate the receiving antenna.
- Increase the separation between the equipment and receiver.
- Connect the equipment into an outlet on a circuit different from that to which the receiver is connected.
- Consult the dealer or an experienced radio/TV technician for help.

Caution: Changes or modifications not expressly approved by HARMAN could void the user's authority to operate the equipment.

FOR PRODUCTS THAT TRANSMIT RF ENERGY:

FCC AND IC INFORMATION FOR USERS

This device complies with Part 15 of the FCC rules and Industry Canada license-exempt RSS 210. Operation is subject to the following two conditions: (1) This device may not cause harmful interference; and (2) this device must accept any interference received, including interference that may cause undesired operation.

FCC/IC Radiation Exposure Statement

This equipment complies with FCC/IC RSS-102 radiation exposure limits set forth for an uncontrolled environment. This equipment should be installed and operated with minimum distance 20cm between the radiator & your body.

FOR PRODUCTS WITH RADIO RECEIVERS THAT CAN USE AN EXTERNAL ANTENNA (USA ONLY):

CATV (CABLE TV) OR ANTENNA GROUNDING

If an outside antenna or cable system is connected to this product, be certain that it is grounded so as to provide some protection against voltage surges and static charges. Section 810 of the National Electrical Code (NEC), ANSI/NFPA No. 70-1984, provides information with respect to proper grounding of the mast and supporting structure, grounding of the lead-in wire to an antenna discharge unit, size of grounding conductors, location of antenna discharge unit, connection to grounding electrodes and requirements of the grounding electrode.

NOTE TO CATV SYSTEM INSTALLER:

This reminder is provided to call the CATV (cable TV) system installer's attention to article 820-40 of the NEC, which provides guidelines for proper grounding and, in particular, specifies that the cable ground shall be connected to the grounding system of the building, as close to the point of cable entry as possible.

IMPORTANT SAFETY INSTRUCTIONS



Le présent appareil est conforme aux CNR d'Industrie Canada applicables aux appareils radioexempt de licence. L'exploitation est autorisée aux deux conditions suivantes :

- (1) l'appareil n' doit pas produire de brouillage, et
- (2) l'utilisateur de l'appareil doit accepter tout brouillage radioélectrique subi, même si le brouillage est susceptible d'en compromettre le fonctionnement."

RSS-102 Statement: This equipment complies with Industry Canada radiation exposure limits set forth for an uncontrolled environment.

Déclaration CNR-102: Cet équipement est conforme à l'exposition aux rayonnements Industry Canada limites établies pour un environnement non contrôlé.

WEEE NOTICE

The Directive on Waste Electrical and Electronic Equipment (WEEE), which entered into force as European law on 13th February 2003, resulted in a major change in the treatment of electrical equipment at end-of-life.

The purpose of this Directive is, as a first priority, the prevention of WEEE, and in addition, to promote the reuse, recycling and other forms of recovery of such wastes so as to reduce disposal.

The WEEE logo on the product or on its box indicating collection for electrical and electronic equipment consists of the crossed-out wheeled bin, as shown below.



This product must not be disposed of or dumped with your other household waste. You are liable to dispose of all your electronic or electrical waste equipment by relocating over to the specified collection point for recycling of such hazardous waste. Isolated collection and proper recovery of your electronic and electrical waste equipment at the time of disposal will allow us to help conserving natural resources. Moreover, proper recycling of the electronic and electrical waste equipment will ensure safety of human health and environment. For more information about electronic and electrical waste equipment disposal, recovery, and collection points, please contact your local city center, household waste disposal service, shop from where you purchased the equipment, or manufacturer of the equipment.

ROHS COMPLIANCE

This product is in compliance with Directive 2011/65/EU of the European Parliament and of the Council of 8 June 2011 on the restriction of the use of certain hazardous substances in electrical and electronic equipment.

FOR PRODUCTS THAT INCLUDE BATTERIES

EU Batteries Directive 2006/66/EC

A new battery directive 2006/66/EC on Battery and Accumulator replacing directive entered into force on the 26th September 2008. The directive applies to all types of batteries and accumulators (AA, AAA, button cells, lead acid, rechargeable packs) including those incorporated into appliances except for military, medical and power tool applications.

The directive sets out rules for collection, treatment, recycling and disposal of batteries, and aims to prohibit certain hazardous substances and to improve environmental performance of batteries and all operators in the supply chain.

Instructions for Users on Removal, Recycling and Disposal of Used Batteries

To remove the batteries from your equipment or remote control, reverse the procedure described in the owner's manual for inserting batteries.

For products with a built-in battery that lasts for the lifetime of the product, removal may not be possible for the user. In this case, recycling or recovery centers handle the dismantling of the product and the removal of the battery. If, for any reason, it becomes necessary to replace such a battery, this procedure must be performed by authorized service centers.

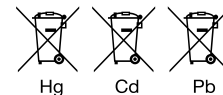
In the European Union and other locations, it is illegal to dispose of any battery with household trash. All batteries must be disposed of in an environmentally sound manner. Contact your local waste-management officials for information regarding the environmentally sound collection, recycling and disposal of used batteries.

WARNING: Danger of explosion if battery is incorrectly replaced. To reduce risk of fire or burns, don't disassemble, crush, puncture, short external contacts, expose to temperature above 60°C (140°F), or dispose of in fire or water. Replace only with specified batteries.

The symbol indicating 'separate collection' for all batteries and accumulators shall be the crossed-out wheeled bin shown below:



In case of batteries, accumulators and button cells containing more than 0.0005 % mercury, more than 0.002 % cadmium or more than 0.004 % lead, shall be marked with the chemical symbol for the metal concerned: Hg, Cd or Pb respectively. Please Refer to the below symbol:



FOR ALL PRODUCTS EXCEPT THOSE WITH WIRELESS OPERATION:

HARMAN International hereby declares that this equipment is in compliance with the EMC 2004/108/EC Directive, LVD 2006/95/EC Directive, ErP 2009/125/EC Directive and RoHS 2011/65/EU Directive. The declaration of conformity may be consulted in the support section of our Web site, accessible from www.jbl.com.

FOR ALL PRODUCTS WITH WIRELESS OPERATION:

HARMAN International hereby declares that this equipment is in compliance with the essential requirements and other relevant provisions of Directive 1999/5/EC, ErP 2009/125/EC Directive and RoHS 2011/65/EU Directive. The declaration of conformity may be consulted in the support section of our Web site, accessible from www.jbl.com.



HARMAN International Industries, Incorporated
8500 Balboa Boulevard, Northridge, CA 91329 USA

© 2012 HARMAN International Industries, Incorporated. All rights reserved.

JBL is a trademark of HARMAN International Industries, Incorporated, registered in the United States and/or other countries.

Blu-ray Disc is a trademark of the Blu-ray Disc Association.

Features, specifications and appearance are subject to change without notice.

www.jbl.com