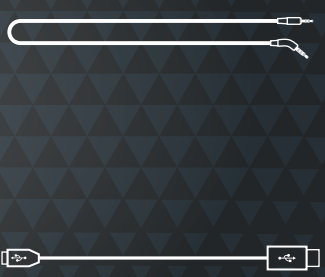


# QUICK START GUIDE

TUNE700BT



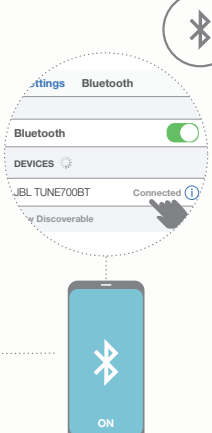
## WHAT'S IN THE BOX



## POWER ON & CONNECT



POWER ON AND AUTOMATICALLY ENTER PAIRING MODE



CHOOSE "JBL TUNE700BT" TO CONNECT

## MANUAL PAIRING



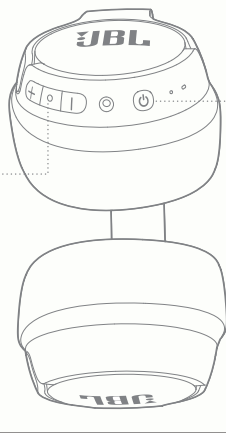
MANUAL PAIRING MODE



CHOOSE "JBL TUNE700BT" TO CONNECT

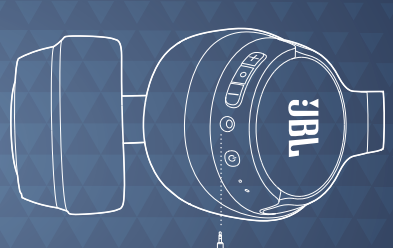
## BUTTON COMMAND

	▶▶		▶▶▶		+	
	>2s		x1			
BIXBY/SIRI®/OTHERS	◀		📞	📞	📞	
x2	x1		x1	>2s		
	◀◀		▶▶		-	
	>2s		x1			

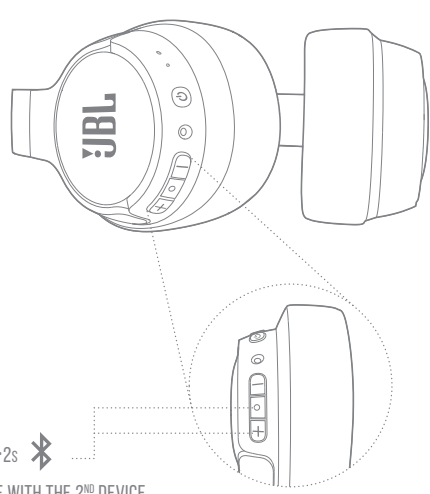


POWER ON/OFF

## WIRED LISTENING



## MULTI-POINT CONNECTION



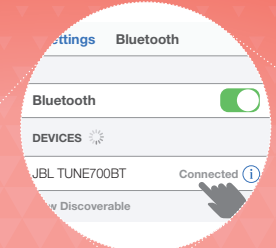
\* (MAXIMUM 2 DEVICES)

ENTER PAIRING MODE WITH THE 2<sup>ND</sup> DEVICE

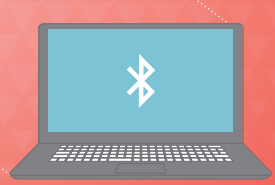
- 1 TO SWITCH MUSIC SOURCE, PAUSE THE MUSIC ON THE CURRENT DEVICE AND SELECT PLAY ON THE 2<sup>ND</sup> DEVICE.
- 2 PHONE CALL WILL ALWAYS TAKE PRIORITY.
- 3 IF ONE DEVICE GOES OUT OF BLUETOOTH RANGE OR POWERS OFF, YOU MAY NEED TO MANUALLY RECONNECT THE REMAINING DEVICE.
- 4 SELECT "FORGET THIS DEVICE" ON YOUR BLUETOOTH DEVICES TO DISCONNECT MULTI-POINT.



1<sup>ST</sup> BLUETOOTH DEVICE



CHOOSE "JBL TUNE700BT" TO CONNECT



2<sup>ND</sup> BLUETOOTH DEVICE

## CHARGING



CHARGE 2HR

## LED BEHAVIORS

		LOW BATTERY
		CHARGING
		FULLY CHARGED



		POWER ON/OFF
		NO DEVICE CONNECTED
		BT CONNECTING
		BT CONNECTED



