

**ROCK  
BAND™**

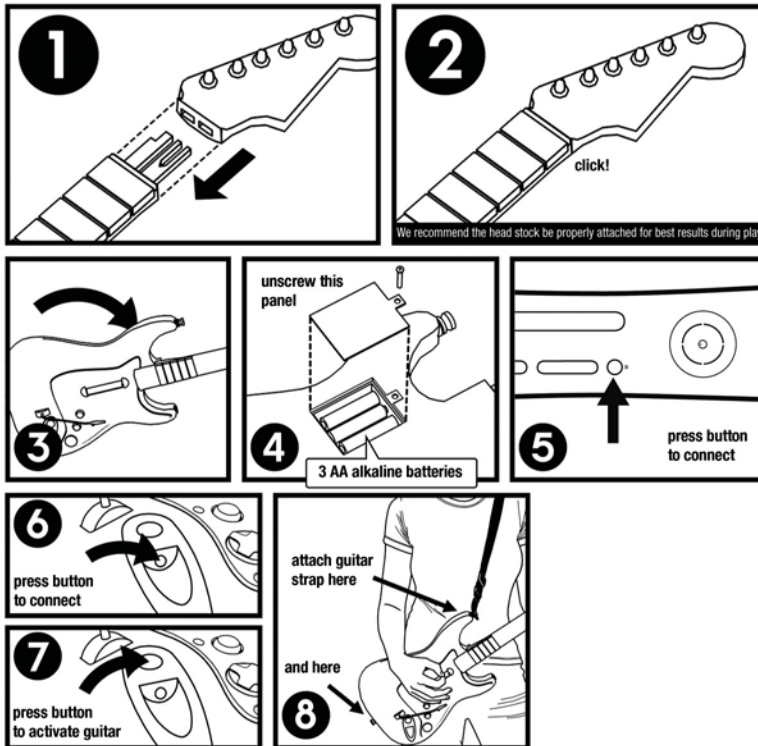


ROCKBAND

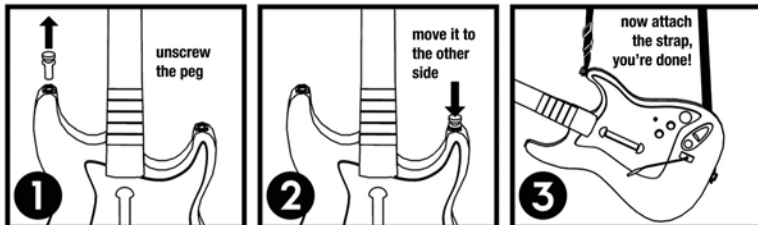
Using your

# WIRELESS GUITAR

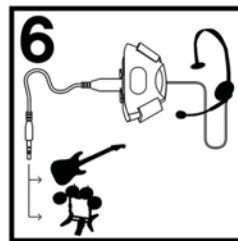
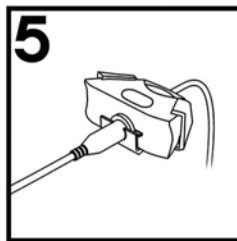
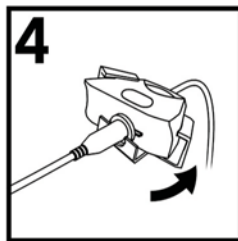
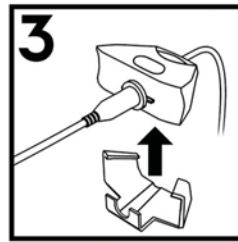
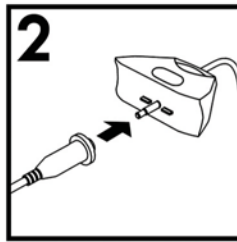
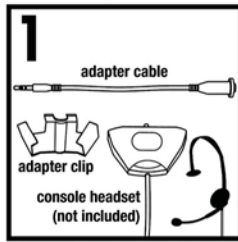
for Xbox 360™



## FOR LEFTIES...



Using the  
**HEADSET ADAPTER**



**Safety/Regulatory/Care Information:**

**CAUTION! Please comply with all safety instructions and warnings.**

- Do not modify, disassemble or attempt to open the controller.
- Do not expose the controller to extreme conditions, including direct sunlight and excessive humidity.
- Do not expose the controller to liquids.
- If cleaning is necessary, use a dry cloth to clean the affected area. Never use chemicals.
- Young children should be supervised by an adult when using this Rock Band Controller. Use of the controller by young children is not recommended. Please make sure that the person operating the controller has enough space around them to avoid hitting others.
- This controller must be used with care to avoid injury. MTV Games shall not be held liable for injuries resulting from modifications to or improper use of the controller.

This class B digital device has been tested and found to comply with part 15 of the FCC rules and the Canadian RSS-210. These limits are designed to provide reasonable protection against harmful interference in a residential installation. This device uses, generates and can radiate radio frequency energy and, if not installed and used in accordance with the instructions, may cause harmful interference to radio communications; however, there is no guarantee that interference will not occur in any particular location or use. Operation is subject to the following two conditions: (1) This device may not cause harmful interference, and (2) This device must accept any interference received, including interference that may cause undesired operation.

If the controller does cause harmful interference to radio or television reception, (you can determine this by turning the controller off and on), the user is encouraged to try to correct the interference by one or more of the following measures:

- Reorient or relocate the controller's receiving antenna, if applicable.
- Increase the separation between the controller and the game console.
- Contact <http://support.ea.com>.

**Exposure to Radio Frequency Radiation:**

The radiated output power of the controller is well within FCC radio frequency exposure limits for this type of device, when unaltered and used as described in this manual, and operates within guidelines found in radio frequency safety standards, which reflect the consensus of the scientific community and therefore, MTV Games believes the device's internal wireless radio is safe for use by consumers. The level of energy emitted is far less than the electromagnetic energy emitted by wireless devices such as mobile phones. However, the use of wireless radios may be restricted in some situations (e.g., on airplanes). If you are unsure of restrictions that may apply in any situation, you must ask for authorization before turning on, connecting or using the controller.

CAUTION: Changes or modifications to this device not expressly approved by MTV Games could void the user's authority to operate this equipment and all warranties."

Rock Band Game Controller - Model Number 822153 Harmonix Music Systems, Inc.  
625 Massachusetts Ave., 2nd Floor, Cambridge, MA 02139, (617) 491-6144

---

---

**Limited 60-Day Warranty Information:**

This product is covered under a 60 day warranty from date of purchase. MTV Games will arrange to repair or replace any defective components at no charge to you within 60 days of purchase date. You must retain and furnish a copy of the sales receipt. This warranty is applicable to the original purchaser for normal intended use. Any damage resulting from modification or improper use is not covered under the terms of this warranty. For more information please contact our warranty representative at <http://support.ea.com>.

**IMPORTANT BATTERY INFORMATION FOR WIRELESS CONTROLLERS**

- Use only fresh AA standard alkaline batteries.
- Replace all used batteries at the same time and with the same type of batteries.
- Be sure to insert batteries correctly by matching the + and – as shown in the instruction manual and in the controller's battery compartment. Never insert batteries backwards.
- If you know that you may not be using the controller for an extended period of time, we recommend that you remove the batteries.

**STORE AND DISPOSE OF BATTERIES PROPERLY**

- Batteries may explode or leak, and cause burn injury, if recharged, disposed of in fire, mixed with a different battery type, inserted backwards or disassembled.
- Never store, put or throw batteries into a flame or in a heated place.
- Do not carry batteries loose in your pocket or purse.
- Do not remove the battery label.
- You should check with local codes, contact the proper government authorities or look under the Government listings of your local area directory to see if there are any special battery disposal instructions or requirements that apply where you live. You should always read and follow the manufacturer's directions to avoid injury and damage and to comply with the laws and regulations protecting health, safety and the environment.

<b>Contel</b> 东莞康特尔电子有限公司 Dong Guan Contel Electronics CO.,LTD.	日期	2008-7-7
	版本	A
图纸名称	微软无线说明书（北美版）	设计 夏伟才
图纸编号	\	电子工程师
比例	1: 1	结构工程师

**NOTE: THE MANUFACTURER IS NOT RESPONSIBLE FOR ANY RADIO OR TV INTERFERENCE CAUSED BY UNAUTHORIZED MODIFICATIONS TO THIS EQUIPMENT. SUCH MODIFICATIONS COULD VOID THE USER'S AUTHORITY TO OPERATE THE EQUIPMENT.**