

TROUBLESHOOTING

If your plane does not respond, please switch OFF and back ON again or replace the batteries in the plane and remote control.

FCC STATEMENT

This device complies with part 15 of the FCC Rules. Operation is subject to the following two conditions: (1) This device may not cause harmful interference, and (2) this device must accept any interference received, including interference that may cause undesired operation.

This equipment has been tested and found to comply with the limits for a Class B digital device, pursuant to Part 15 of the FCC Rules. These limits are designed to provide reasonable protection against harmful interference in a residential installation. This equipment generates, uses and can radiate radio frequency energy, and, if not installed and used in accordance with the instructions, may cause harmful interference to radio communications. However, there is no guarantee that interference will not occur in a particular installation. If this equipment does cause harmful interference to radio or television reception, which can be determined by turning the equipment off and on, the user is encouraged to try to correct the interference by one or more of the following measures:

- Reorient or relocate the receiving antenna.
- Increase the separation between the equipment and the receiver.
- Consult the dealer or an experienced radio/TV technician for help.

CAUTION: Changes or modifications not expressly approved by the party responsible for compliance could void the user's authority to operate the equipment.

Product and colors may vary.

© 2009 Hasbro. All Rights Reserved.
TM & © denote U.S. Trademarks.
94820/948190000
PN 7018430000

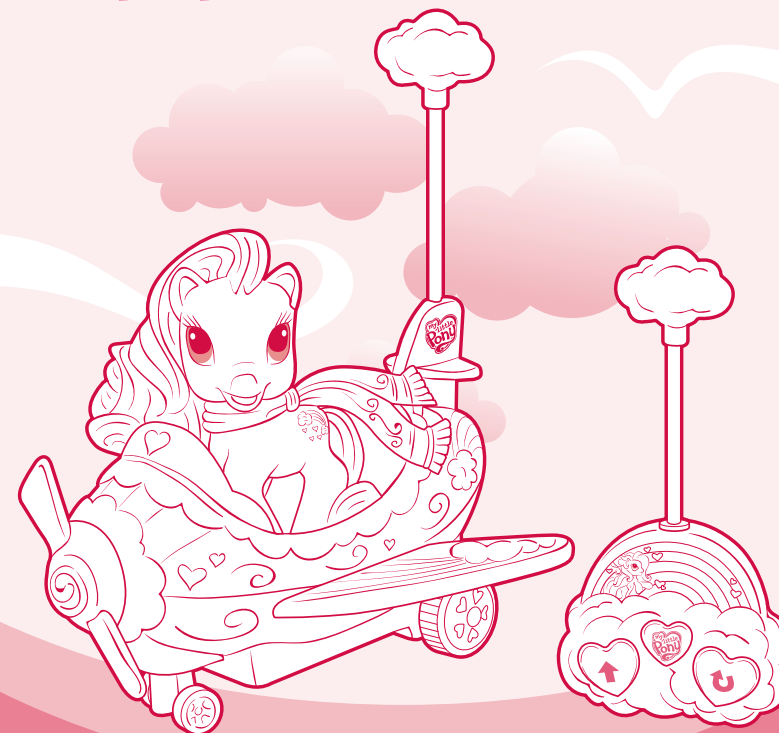


Questions? Call 1-800-327-8264

AGES 3+



RC Rainbow Dash Plane!™



PLANE

 **x3** 1.5V AA or R6 size
BATTERIES REQUIRED
NOT INCLUDED

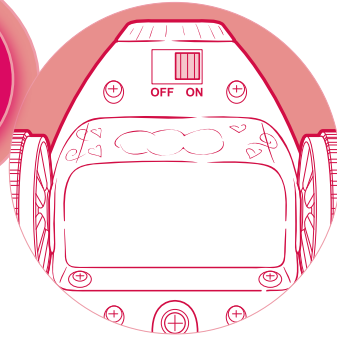
Alkaline batteries recommended. Phillips/cross head screwdriver (not included) needed to insert batteries.

REMOTE CONTROL

 **x2** 1.5V AA or R6 size
BATTERIES INCLUDED

Replace with 2 x 1.5V "AA" or R6 size batteries. Alkaline batteries recommended. Phillips/cross head screwdriver (not included) needed to replace batteries.

GETTING STARTED



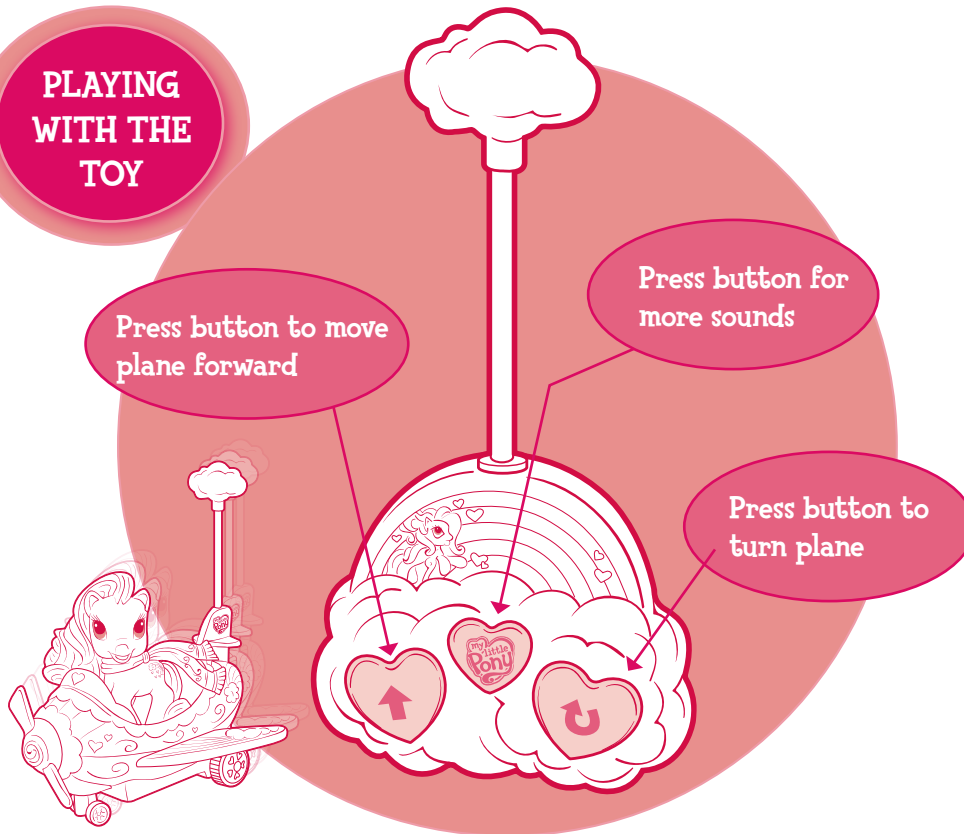
The plane's ON/OFF switch is located on the back of the plane. Turn on the plane by moving the switch to the "ON" position.



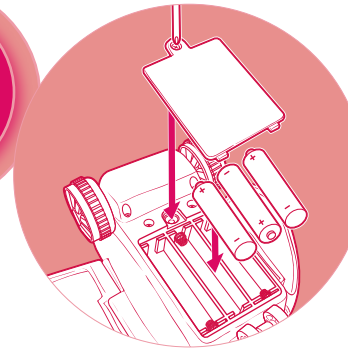
TIP FOR PARENTS: To turn off sound effects in PLAY mode, press and hold the middle button for 10 seconds or until you hear a tone. Repeat step to turn the sound on again.

NOTE: The LED light indicates that the plane is turned on. The plane uses battery power whenever the switch is in the "ON" position. To help conserve battery life, move the switch to "OFF" when you are not playing with the toy.

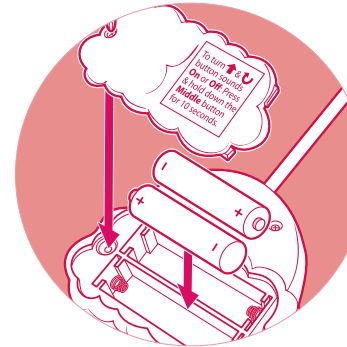
PLAYING WITH THE TOY



BATTERIES



TO INSTALL PLANE BATTERIES
Use a Phillips/cross head screwdriver (not included) to loosen screw in battery compartment cover (screw remains attached to cover). Remove cover. Insert 3 x 1.5V "AA" or R6 size batteries. Alkaline batteries recommended. Replace cover and tighten screw.



TO REPLACE REMOTE CONTROL BATTERIES

Use a Phillips/cross head screwdriver (not included) to loosen screw in battery compartment cover (screw remains attached to cover). Remove cover. Remove and discard old batteries. Replace with 2 x 1.5V "AA" or R6 size batteries. Alkaline batteries recommended. Replace cover and tighten screw.

IMPORTANT: BATTERY INFORMATION

⚠ CAUTION:

1. Always follow the instructions carefully. Use only batteries specified and be sure to insert them correctly by matching the + and - polarity markings.
2. Do not mix old batteries and new batteries or standard (carbon-zinc) with alkaline batteries.
3. Remove exhausted or dead batteries from the product.
4. Remove batteries if product is not to be played with for a long time.
5. Do not short-circuit the supply terminals.
6. Should this product cause, or be affected by, local electrical interference, move it away from other electrical equipment. Reset (switching off and back on again or removing and re-inserting batteries) if necessary.
7. **RECHARGEABLE BATTERIES:** Do not mix these with any other types of batteries. Always remove from the product before recharging. Recharge batteries under adult supervision. **DO NOT RECHARGE OTHER TYPES OF BATTERIES.**