

Troubleshooting

- If skateboard doesn't respond, slide ON switch to OFF and back ON again. If that doesn't work, battery power may be low. Replace batteries.
- If wheels spin but skateboard doesn't move, try placing pup, further back on skateboard.
- If pup is falling off or tipping over, make sure she's firmly attached to skateboard and her weight is evenly balanced.
- For best performance, use on hard, level, smooth surface.
- Bring all toy pieces inside after playing.
- To help conserve battery life when you're not playing with toy, be sure nothing is pressing down on the remote control buttons.

FCC STATEMENT

This device complies with Part 15 of the FCC Rules. Operation is subject to the following two conditions: (1) This device may not cause harmful interference, and (2) this device must accept any interference received, including interference that may cause undesired operation.

NOTE: This equipment has been tested and found to comply with the limits for a Class B digital device, pursuant to Part 15 of the FCC Rules. These limits are designed to provide reasonable protection against harmful interference in a residential installation. This equipment generates, uses and can radiate radio frequency energy, and, if not installed and used in accordance with the instructions, may cause harmful interference to radio communications. However, there is no guarantee that interference will not occur in a particular installation. If this equipment does cause harmful interference to radio or television reception, which can be determined by turning the equipment off and on, the user is encouraged to try to correct the interference by one or more of the following measures:

- Reorient or relocate the receiving antenna.
- Increase the separation between the equipment and the receiver.
- Consult the dealer or an experienced radio/TV technician for help.

CAUTION: Changes or modifications to this unit not expressly approved by the party responsible for compliance could void the user's authority to operate the equipment.

Come play with us at
FurRealFriends.com

Questions? Call 1-888-722-3972



Product and colors may vary. Retain this information for future reference.

© 2012 Hasbro. All Rights Reserved.

TM & ® denote U.S. Trademarks.

US Patent No. 6811461

A1649

PN 7349040000

⚠ CAUTION:

Hair entanglement may result if child's hair comes in contact with moving parts of toy. Adult supervision is required.

AGES 4+

Puppy colors may vary.
27 MHz



The Skateboarding Pup™

PET CARE GUIDE

ARTECH
Solution of Graphics Communication

Customer Code: 5008/A16490000_FRF_SkateboardPup_INST.indd
2012-12-04/6/Sunday/2013-01-03/EPI_CIT-Coated

灑能設計制作(深圳)有限公司

www.artechgraphics.com.hk | info@artechgraphics.com.hk | Tel 755-3322 8070

219

527



527

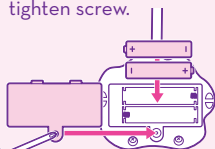


219

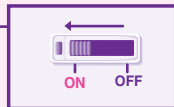
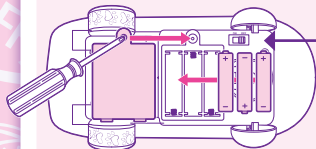
GETTING STARTED

TO INSTALL BATTERIES

Use a Phillips/cross head screwdriver (not included) to loosen screw in battery compartment cover (screw remains attached to cover). Remove cover. Insert new batteries. Replace cover and tighten screw.



**x2 1.5VAAA
ALKALINE BATTERIES
REQUIRED NOT INCLUDED**



Slide the bottom ON/OFF switch on the skateboard to the "ON" position.

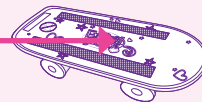
**x3 1.5VAAA
ALKALINE BATTERIES
REQUIRED NOT INCLUDED**

NOTE: Red light indicates skateboard is on. To conserve battery life, move switch to OFF when not in use. Remote control has automatic shut-off feature.

1

PLAYING WITH TRIxie THE SKATEBOARDING PUP

Decorate!



Dress Her Up!

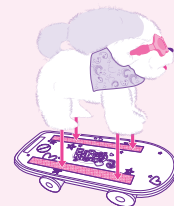


NOTE: Ask an adult to cut threads holding bandana together.

NOTE: Do not stand on skateboard. Intended for TRIxie THE SKATEBOARDING PUP only.

Pose Her!

She can be posed in many different ways. Move her legs, ears and head into different positions.



2

ARTECH
Solution of Graphics Communication

Customer Code: 5008/A16490000_FRF SkateboardPup_INST.indd
2012-12-0446/Sunday/2013-01-03/EP1_CIT-Coated

匯能設計制作(深圳)有限公司
www.artechgraphics.com.hk | info@artechgraphics.com.hk | Tel 755-3322 8070

219

527

527

219