



## CAUTION:

Hair entanglement may result if child's hair comes in contact with moving parts of toy. Adult supervision is required.

AGES  
**6+**

**FurReal**  
**makers**™\*

**PROTO MAX**™\*

**FURREAL MAKERS** GUIDE  
CREATE & CODE YOUR **ULTIMATE PUP**

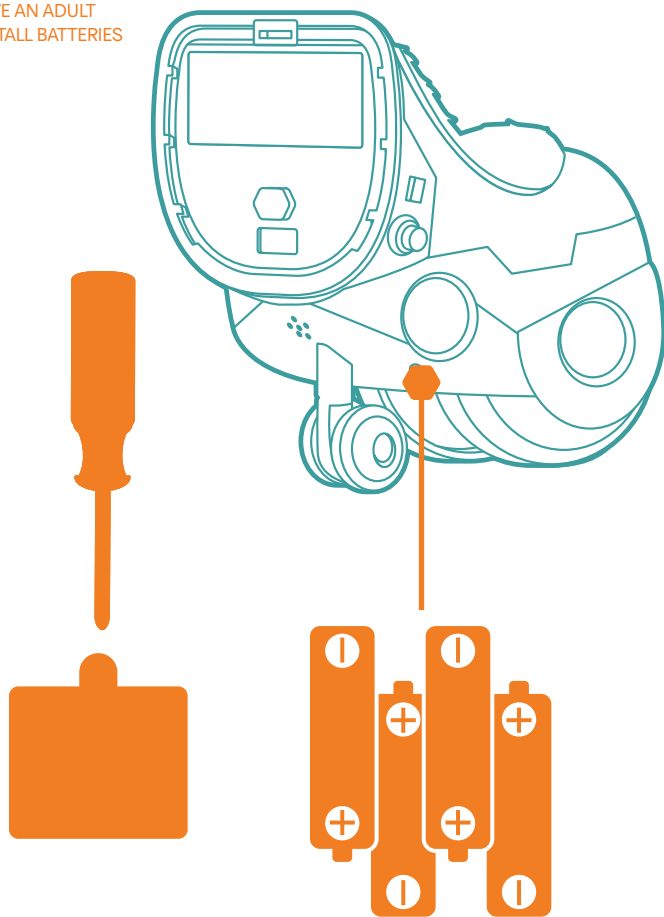
2.4 GHz

DID YOU EVER THINK YOU'D MAKE  
**YOUR VERY OWN PET?**  
WELL, NOW YOU CAN! JUST FOLLOW THIS GUIDE  
AND SOON YOU'LL BE PLAYING WITH YOUR  
**ULTIMATE PUP!**

[furrealmakers.com](http://furrealmakers.com)

# 1. POWER UP!

HAVE AN ADULT  
INSTALL BATTERIES



## INSTALL 4 X 1.5V AA ALKALINE BATTERIES

USE A PHILLIPS/CROSS HEAD SCREWDRIVER (NOT INCLUDED).

## IMPORTANT: BATTERY INFORMATION

### ⚠ CAUTION:

1. TO AVOID BATTERY LEAKAGE
  - a. Always follow the instructions carefully. Use only batteries specified and be sure to insert them correctly by matching the + and – polarity markings.
  - b. Do not mix old batteries and new batteries or standard (carbon-zinc) with alkaline batteries.
  - c. Remove exhausted or dead batteries from the product.
  - d. Remove batteries if product is not to be played with for a long time.
  - e. Do not short-circuit the supply terminals.
  - f. RECHARGEABLE BATTERIES: Do not mix these with any other types of batteries. Always remove from the product before recharging. Recharge batteries under adult supervision. DO NOT RECHARGE OTHER TYPES OF BATTERIES.
2. Should this product cause, or be affected by, local electrical interference, move it away from other electrical equipment. Reset (switching off and back on again or removing and re-inserting batteries) if necessary.

#### FCC STATEMENT

This device complies with Part 15 of the FCC Rules. Operation is subject to the following two conditions: (1) This device may not cause harmful interference, and (2) this device must accept any interference received, including interference that may cause undesired operation.

NOTE: This equipment has been tested and found to comply with the limits for a Class B digital device, pursuant to Part 15 of the FCC Rules. These limits are designed to provide reasonable protection against harmful interference in a residential installation. This equipment generates, uses and can radiate radio frequency energy, and, if not installed and used in accordance with the instructions, may cause harmful interference to radio communications. However, there is no guarantee that interference will not occur in a particular installation. If this equipment does cause harmful interference to radio or television reception, which can be determined by turning the equipment off and on, the user is encouraged to try to correct the interference by one or more of the following measures:

- Reorient or relocate the receiving antenna.
- Increase the separation between the equipment and the receiver.
- Consult the dealer or an experienced radio/TV technician for help.

#### CAUTION:

Changes or modifications to this unit not expressly approved by the party responsible for compliance could void the user's authority to operate the equipment.

#### CAN ICES-3 (B)/NMB-3(B)

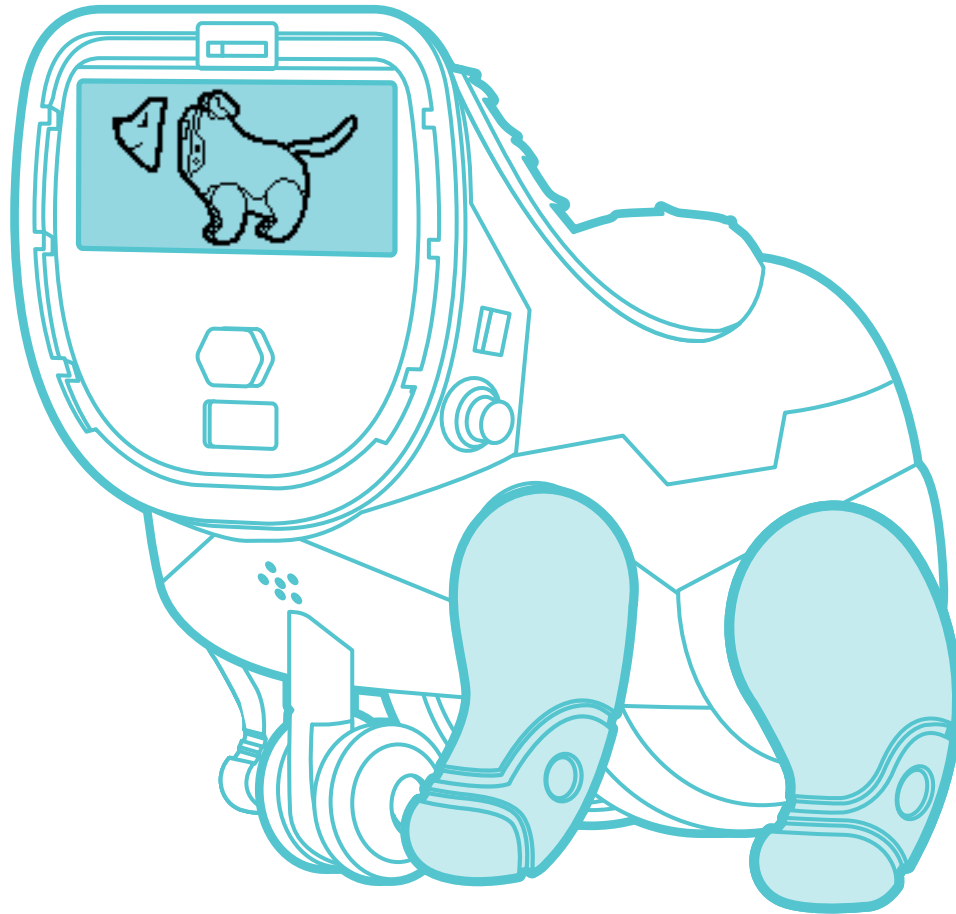
This device complies with Industry Canada's license-exempt RSSs. Operation is subject to the following two conditions: (1) this device may not cause interference, and (2) this device must accept any interference, including interference that may cause undesired operation of the device.

Le présent appareil est conforme aux CNR d'Industrie Canada applicables aux appareils radio exempts de licence. L'exploitation est autorisée aux deux conditions suivantes : (1) l'appareil ne doit pas produire de brouillage, et (2) l'appareil doit accepter tout brouillage radioélectrique subi, même si le brouillage est susceptible d'en compromettre le fonctionnement.

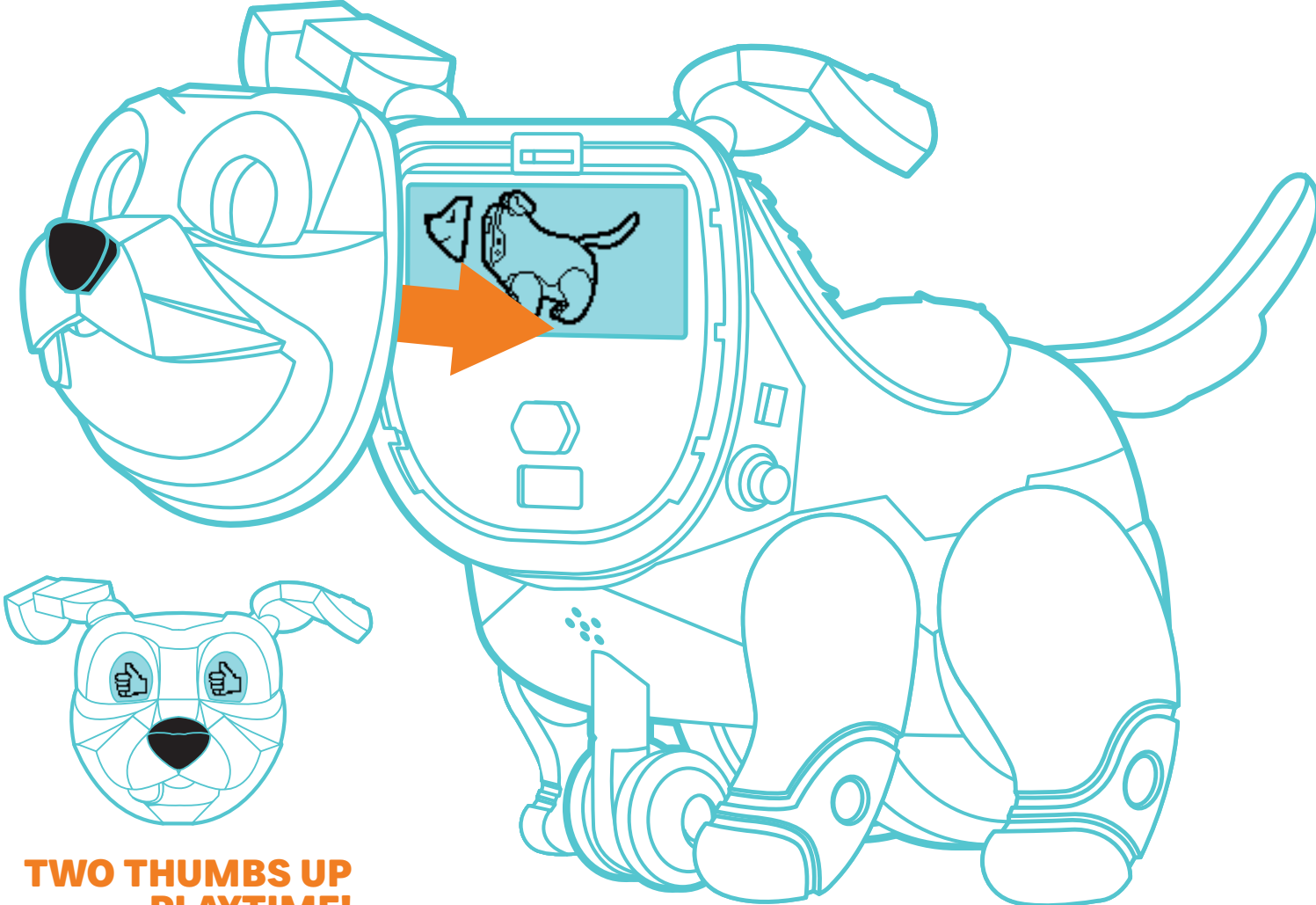
# 2. READY, SET, ASSEMBLE!

## LCD SCREEN

GUIDES YOU  
THROUGH  
ASSEMBLY

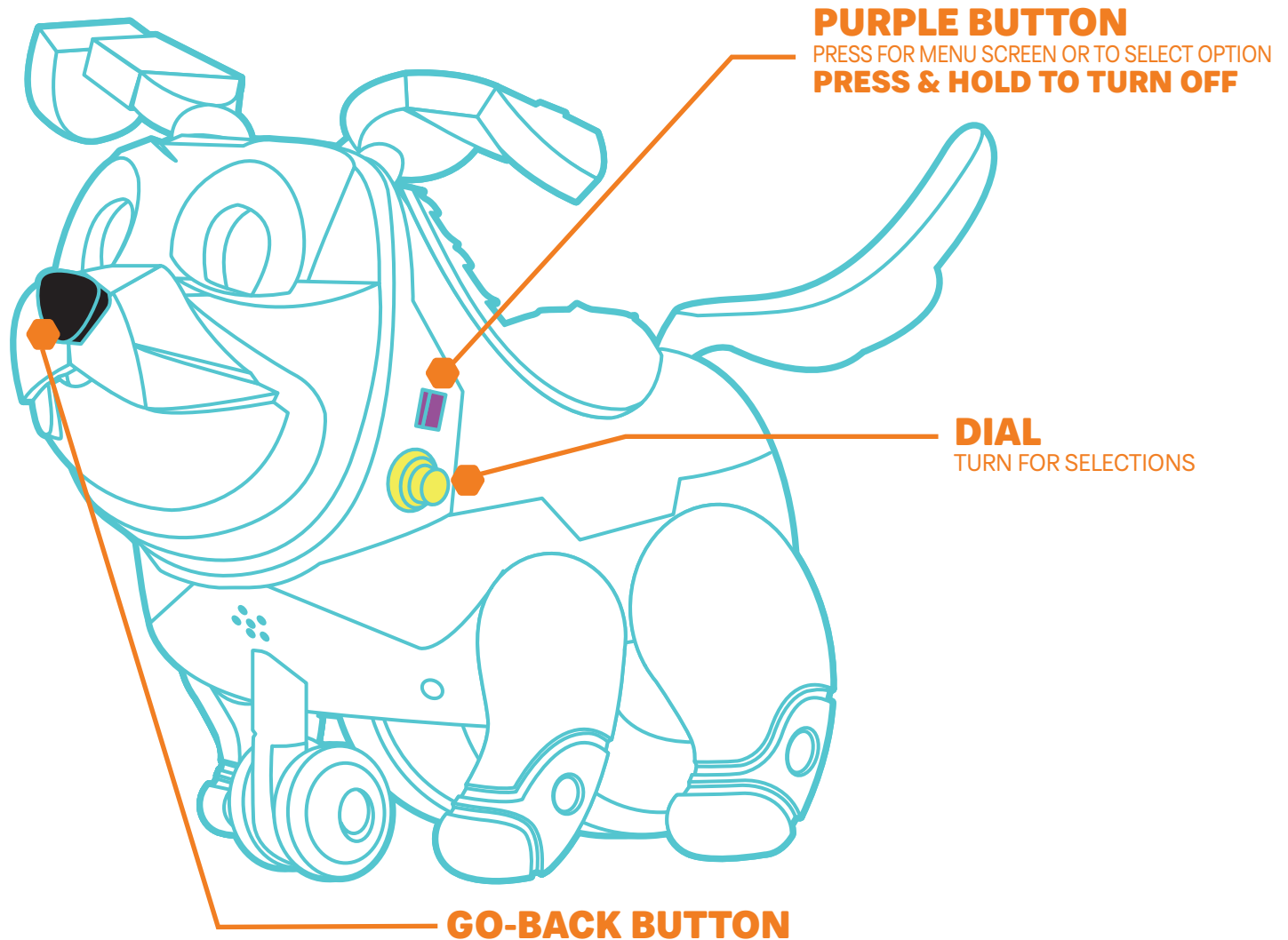


**DON'T FORGET TO ADD YOUR PUP'S FACE!**  
(WHAT HAPPENS WHEN YOU REMOVE IT?)

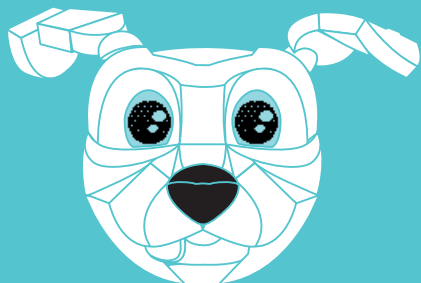


**TWO THUMBS UP**  
MEANS IT'S **PLAYTIME!**

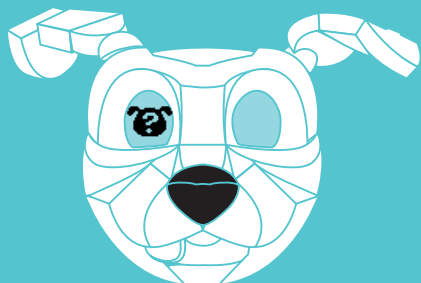
# 3. START CUSTOMIZING



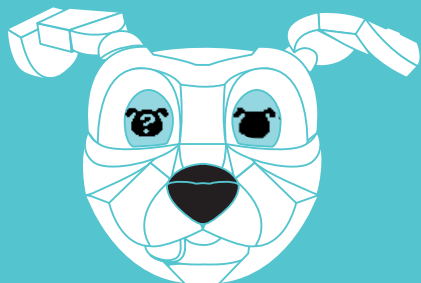
SELECT  
**STARTER PERSONALITY**



PUSH **PURPLE BUTTON** TO LAUNCH MENU

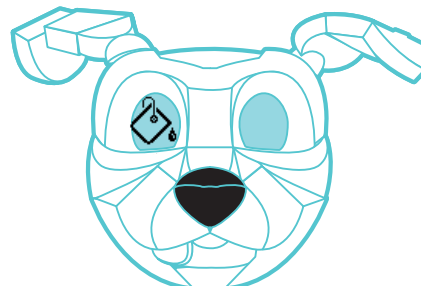


PUSH **PURPLE BUTTON** TO SELECT  
TURN **DIAL** TO SELECT OTHER OPTIONS

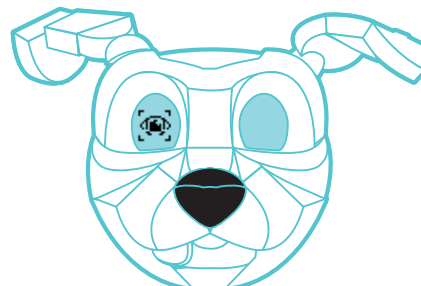


TURN **DIAL** TO SEE STARTER PERSONALITIES  
PUSH **PURPLE BUTTON** TO SELECT.

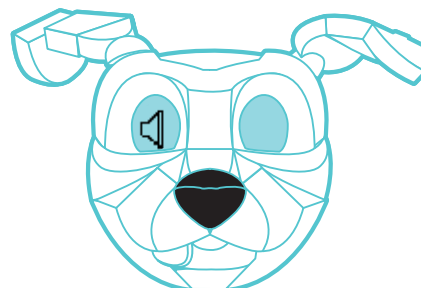
OTHER  
**CUSTOMIZING OPTIONS**



BODY COLOR



EYE EXPRESSION



VOLUME

OPTION  
FF

# 4. DISCOVER THE ACTIVATION POINTS

## EXPERIMENT

WHAT HAPPENS WHEN YOU...

**POP** THE EARS ON? **PUSH** THE NOSE?

**REMOVE** THE TAIL? PLAY **MUSIC**?

**PET** ITS BACK?



**MICROPHONE**





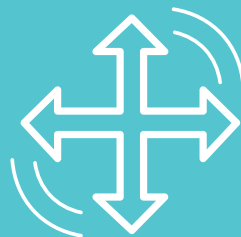
EARS

HEAD

[furrealmakers.com](http://furrealmakers.com)

BACK

TAIL



ACCELEROMETER



PLACE PUP IN DIFFERENT POSITIONS... **WHAT HAPPENS?**

# 5. MAKE THE CONNECTION!

## DOWNLOAD THE FURREAL MAKERS™\* PROTO MAX™\* APP

MAKE SURE THAT *Bluetooth*®  
IS ENABLED ON YOUR  
**MOBILE DEVICE**



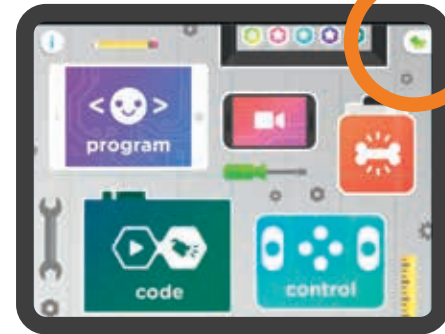
*App image shown not final.  
Actual image may differ.*



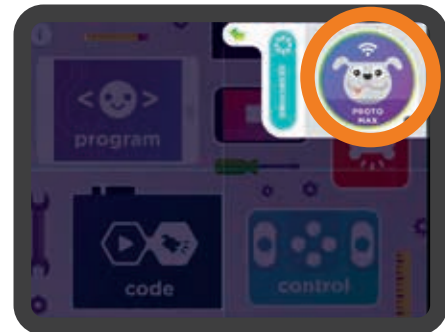
**App available through June 30, 2019.** FURREAL MAKERS™\* PROTO MAX™\* app works with select iPhone®, iPad®, iPod touch®, and Android devices. Updates affect compatibility. Check [furrealmakers.com](http://furrealmakers.com) for details. Ask a parent first. Not available in all languages.

Apple, the Apple logo, iPhone, iPad, and iPod touch are trademarks of Apple Inc., registered in the U.S. and other countries. App Store is a service mark of Apple Inc. Android, Google Play, and the Google Play logo are trademarks of Google Inc.

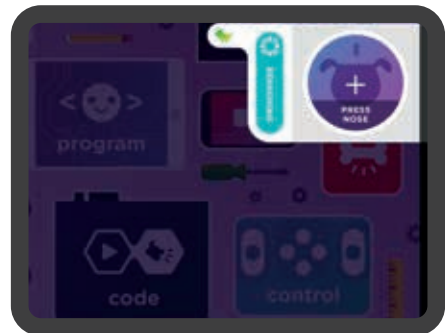
LINK TO THE  
**APP**



TAP TO INITIATE CONNECTION



PRESS NOSE TO CONNECT



*App images shown not final. Actual images may differ.*

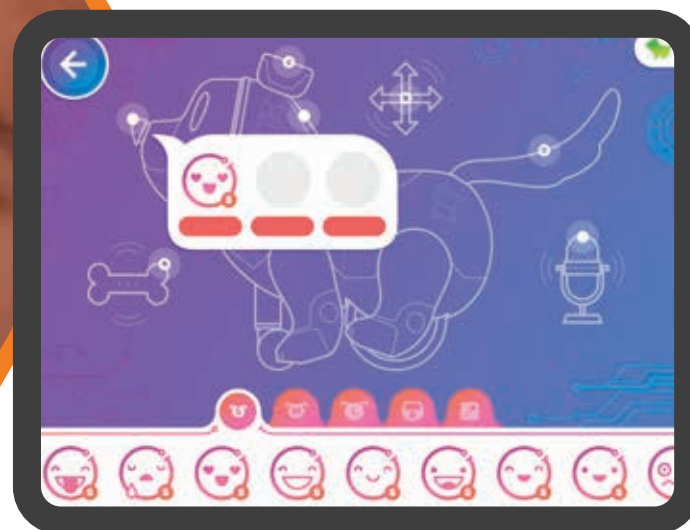
# MAKER IDEAS

## “SUPER-SWEET” PET

IN THE APP, DRAG



INTO THE NOSE SLOT



App image shown not final.  
Actual image may differ.

**PRESS THE NOSE FOR A  
“SUPER SWEET” PUP!**

MAKER: **Alexia**, 10

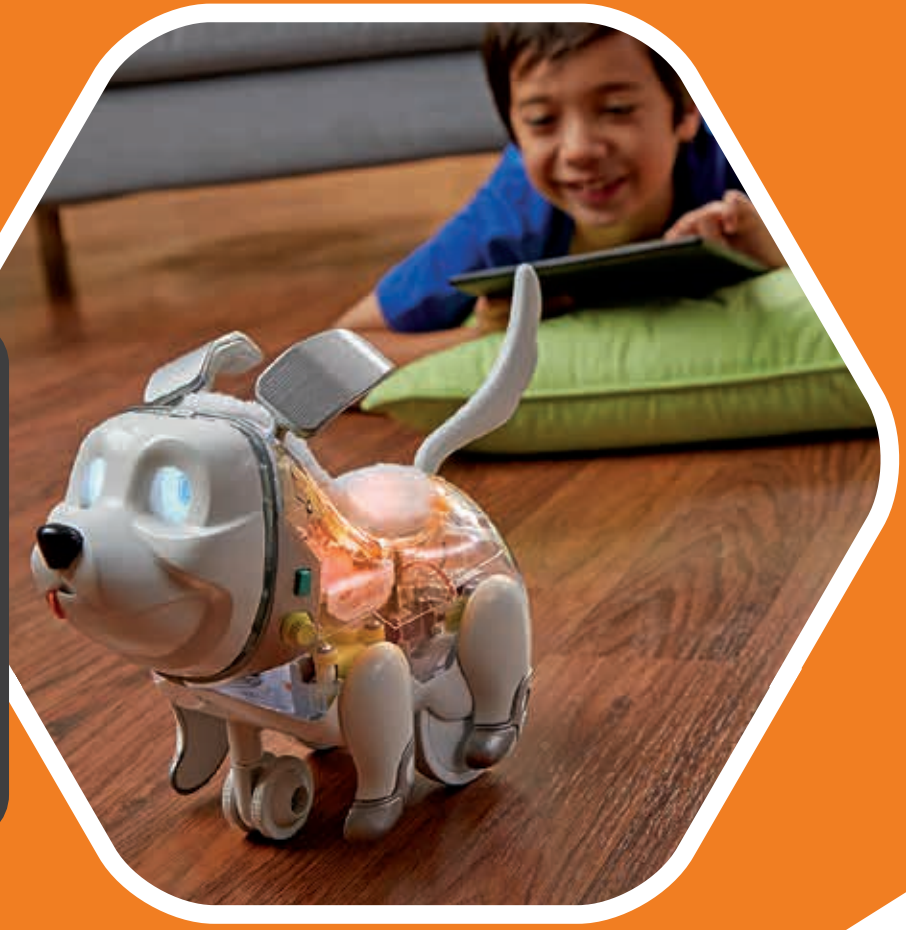
# “FAST” PET

TRY CREATING  
**OBSTACLE COURSES**  
FOR YOUR PUP TO RACE THROUGH!

USE CODE LIKE THIS TO SET EACH MOTION.



App image shown not final.  
Actual image may differ.



MAKER: **Luca**, 10

USE THESE ICONS TO SET THE SPEED!



FOR MORE  
**MAKER IDEAS**  
VISIT

[furrealmakers.com](http://furrealmakers.com)

# FUN FACTS

## CAPACITIVE SENSORS

SENSORS THAT RESPOND TO **TOUCH**

## LCD

LIQUID CRYSTAL DISPLAY. FLAT-PANEL DISPLAY THAT USES ELECTRIC CURRENT TO MAKE LIQUID CRYSTALS CLEAR OR SOLID

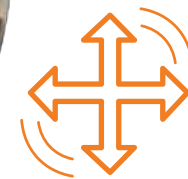
## RGB LED

RED-GREEN-BLUE LIGHT EMITTING DIODE. THE **LIGHT** IN THE PUP THAT PRODUCES ALL THE **COLORS** YOU SEE



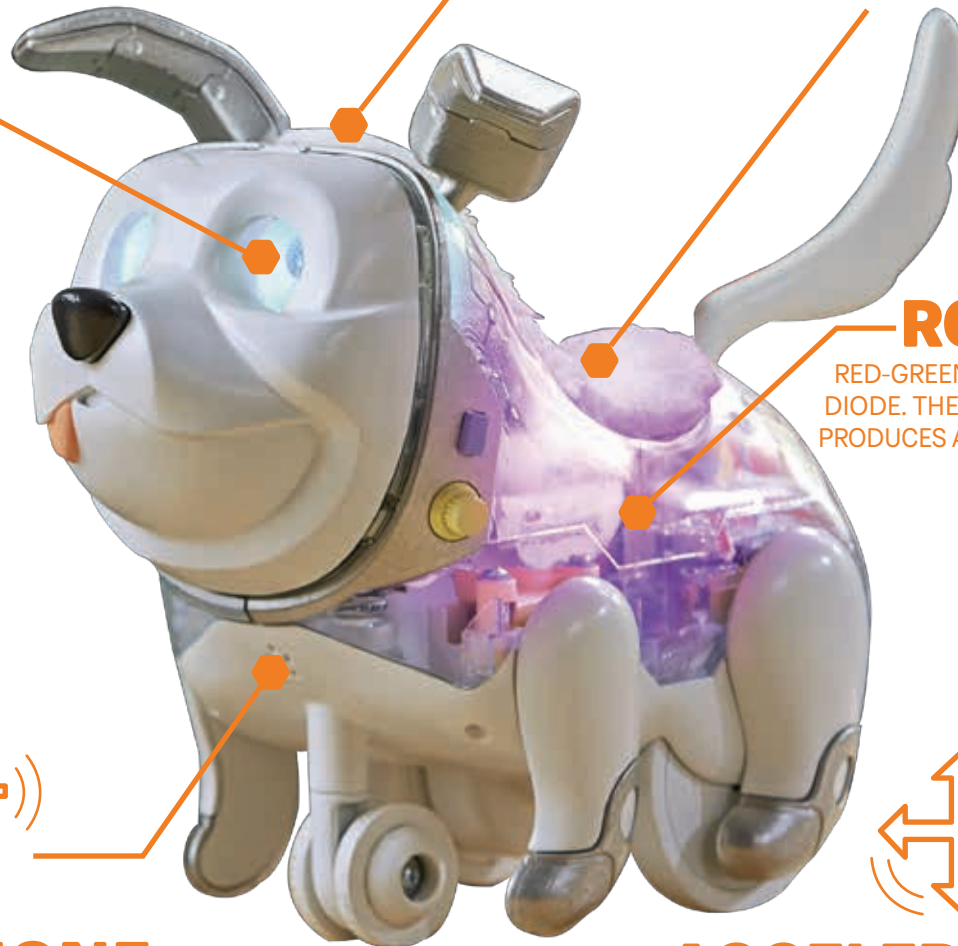
## MICROPHONE

DETECTS DIFFERENT TYPES OF **SOUNDS**



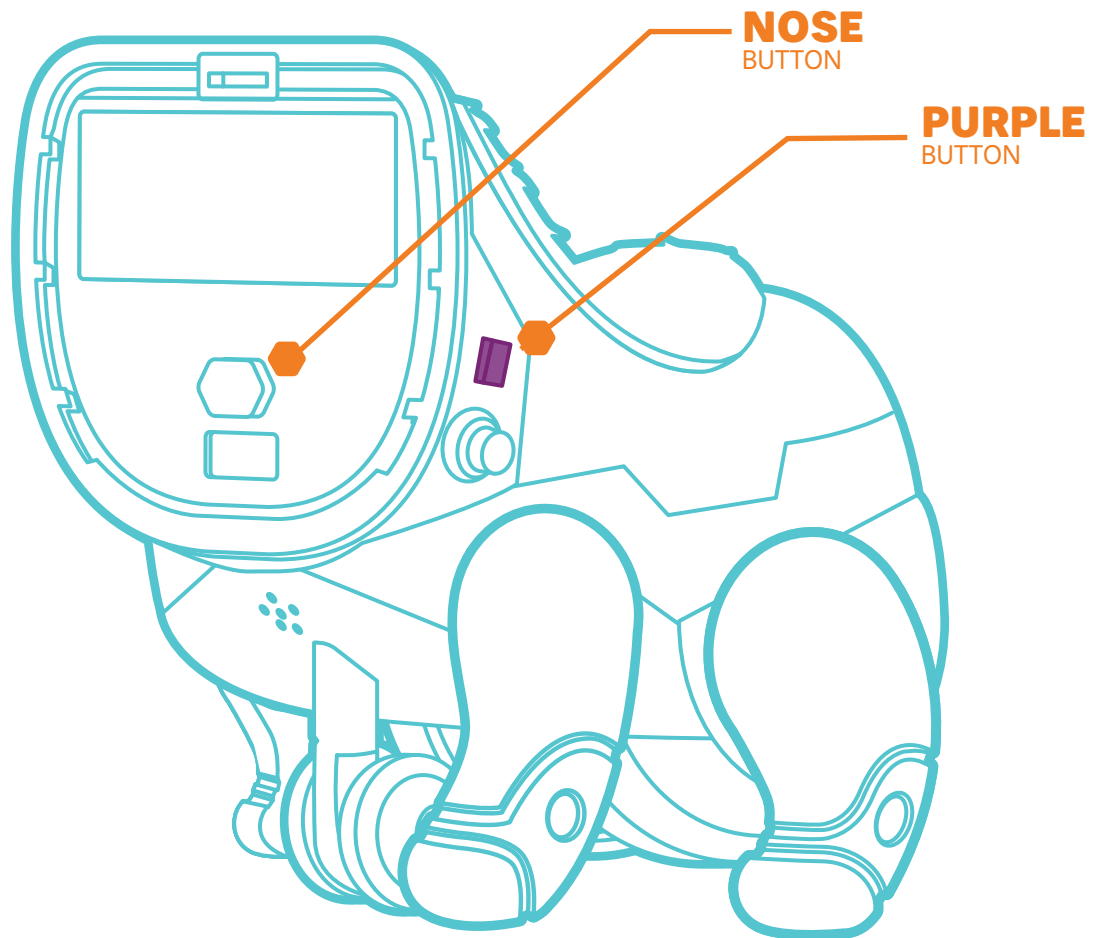
## ACCELEROMETER

A SENSOR THAT DETECTS CHANGES IN **MOTION AND POSITION**



# TO RESET PUP

1. REMOVE **PUP FACE**. PULL STRAIGHT OUT, NOT DOWN.
2. HOLD DOWN **NOSE BUTTON** AND **PURPLE BUTTON** ON SIDE OF HEAD FOR **FIVE SECONDS**. PUP WILL MAKE NOISE WHEN RESET IS COMPLETE.



# HELPFUL TIPS

- IF YOUR PUP'S NOT RESPONDING TO THE APP:
  - BE SURE THAT PUP IS POWERED ON. REPLACE BATTERIES IF THERE'S NO POWER.
  - FOLLOW APP INSTRUCTIONS FOR CONNECTING THE PUP TO YOUR DEVICE.
  - MAKE SURE THAT PUP IS WITHIN 10 FEET OF DEVICE AND **NOT** CONNECTED TO ANOTHER ONE. IF IT IS, DISCONNECT.
  - ALLOW THE APP TO TURN ON *Bluetooth*<sup>®</sup> IF PROMPTED.
- YOUR PUP DOESN'T LIKE WATER, SO KEEP IT AWAY FROM SINKS, BATHTUBS, POOLS, AND ALL OTHER WET PLACES.
- IF YOUR PUP ISN'T RESPONDING TO INPUTS PROPERLY, IT MAY BE TIME TO CHANGE THE BATTERIES.
- FOR MORE TIPS, GO TO **FURREALMAKERS.COM**

# SURFACE CLEAN ONLY

GENTLY WIPE WITH CLEAN, DRY CLOTH. **DO NOT GET WET.**

DO NOT USE DETERGENT OR STAIN REMOVERS.

Product and colors may vary. Please retain this information for future reference.

The *Bluetooth*<sup>®</sup> word mark and logo are registered trademarks owned by Bluetooth SIG, Inc. and any use of such marks by Hasbro is under license. Other trademarks and trade names are those of their respective owners.

®\* and/or TM\* & © 2016 Hasbro, Pawtucket, RI 02861-1059 USA. All Rights Reserved. TM & ® denote U.S. Trademarks. US/CANADA TEL. 1-800-255-5516.

U.S. Pat. Nos. 6773344, 6356867 & 6160986.

C0399 PN00014446



**WHAT KIND OF PUP**  
WILL YOU  
**DREAM UP?**



[furrealmakers.com](http://furrealmakers.com)