



TIPS

- Force Link 2.0 goes to sleep after 5 minutes of non-use.
- If toy does not react to Force Link 2.0, adjust hand placement to match image. For best results, hold figure at the waist.
- When battery power is low, Force Link 2.0 will issue a phrase indicating it is time to change the batteries.
- If Force Link 2.0 does not respond to tapping, try tapping multiple times or tapping harder. When Force Link 2.0 wearable technology is activated, a light will turn on, indicating you are ready to play.
- If product does not respond to forward/side-to-side movement, try moving faster.
- Lunge figure forward at any time to reactivate battle effects.
- When figure is out of range of gauntlet, gauntlet will indicate with audible tone.
- Only toys with the Force Link logo are compatible with Force Link technology.
- Force Link 2.0 wearable technology works with Force Link 1.0 and Force Link 2.0 figures, vehicles, and accessories. Force Link 1.0 wearable technology does NOT work with Force Link 2.0 figures, vehicles, and accessories. For more information, visit starwars.hasbro.com.

DOWNLOAD THE HASBRO FORCE LINK 2.0™* APP TO ACTIVATE FIGURE SOUNDS, TRACK FIGURE PLAY, AND LEVEL UP! (ASK A PARENT)

App required to activate Force link 2.0 figure effects. Follow in-app gameplay to sync Force Link 2.0 wearable technology and level up.

APP 6+



App available through June 30, 2019. Download required for app play. Hasbro FORCE LINK™* app works with select iPhone®, iPad®, iPod touch®, and select Android devices. Updates may affect compatibility. Check starwars.hasbro.com for compatibility, availability, and instructions. Ask a parent before going online. Not available in all languages or markets.

Apple, the Apple logo, iPhone, iPad, and iPod touch are trademarks of Apple Inc., registered in the U.S. and other countries. App Store is a service mark of Apple Inc. Android, Google Play, and the Google Play logo are trademarks of Google Inc.

FCC STATEMENT

This device complies with Part 15 of the FCC Rules. Operation is subject to the following two conditions: (1) This device may not cause harmful interference, and (2) this device must accept any interference received, including interference that may cause undesired operation.

NOTE: This equipment has been tested and found to comply with the limits for a Class B digital device, pursuant to Part 15 of the FCC Rules. These limits are designed to provide reasonable protection against harmful interference in a residential installation. This equipment generates, uses and can radiate radio frequency energy, and, if not installed and used in accordance with the instructions, may cause harmful interference to radio communications. However, there is no guarantee that interference will not occur in a particular installation. If this equipment does cause harmful interference to radio or television reception, which can be determined by turning the equipment off and on, the user is encouraged to try to correct the interference by one or more of the following measures:

- Reorient or relocate the receiving antenna.
- Increase the separation between the equipment and the receiver.
- Consult the dealer or an experienced radio/TV technician for help.

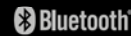
CAUTION: Changes or modifications to this unit not expressly approved by the party responsible for compliance could void the user's authority to operate the equipment.

CAN ICES-3 (B) / NMB-3 (B)

This device complies with Industry Canada's license-exempt RSS. Operation is subject to the following two conditions: (1) this device may not cause interference, and (2) this device must accept any interference, including interference that may cause undesired operation of the device.

Le présent appareil est conforme aux CNR d'Industrie Canada applicables aux appareils radio exempts de licence. L'exploitation est autorisée aux deux conditions suivantes: (1) l'appareil ne doit pas produire de brouillage, et (2) l'appareil doit accepter tout brouillage radioélectrique subi, même si le brouillage est susceptible d'en compromettre le fonctionnement.

2.4 GHz
13.56 MHz



Product and colors may vary. Retain this information for future reference. The Bluetooth® word mark and logos are registered trademarks owned by the Bluetooth SIG, Inc. and any use of such marks by Hasbro is under license. Other trademarks and trade names are those of their respective owners. © & ™ Lucasfilm Ltd. ©* and/or TM* & © 2017 Hasbro, Pawtucket, RI 02861-1059 USA. All Rights Reserved. TM & © denote U.S. Trademarks. HASBRO CANADA, LONGUEUIL, QC, CANADA J4G 1G2. US/CANADA TEL. 1-800-255-5516. U.S. Pat. Pend.

AGES 4+

WARNING:
CHOKING HAZARD - Small parts.
Not for children under 3 years.

STAR WARS™



FORCE LINK 2.0 STARTER SET

★ STARWARS.HASBRO.COM ★ STARWARS.COM



E0322 PN00023527

ARTECH

Customer Code: 5008/E03220000_352644_SW_S2_GAL_FORCELINK_2_STARTER_PACK_INST_FAR.indd
2017-11-0302/Anne/2017-11-15/Gracol 2006

運館設計制作(深圳)有限公司
www.artechgraphics.com.hk | info@artechgraphics.com.hk | Tel 755-3322 8070

K

124C

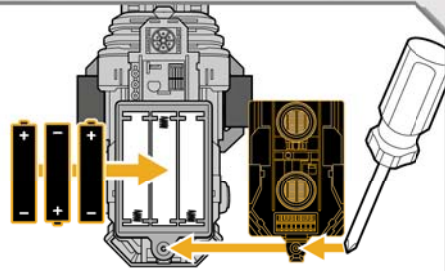
PMS COLOUR FOR REFERENCE ONLY.
PLEASE REFER TO PANTONE GUIDE BOOK.



TO INSERT BATTERIES

3X 1.5V AAA ALKALINE BATTERIES REQUIRED

Use a Phillips/cross head screwdriver (not included).



IMPORTANT: BATTERY INFORMATION

⚠ CAUTION:

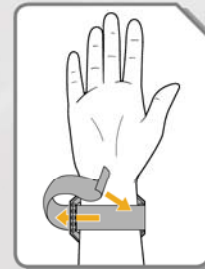
- As with all small batteries, the batteries used with this product should be kept away from small children who still put things in their mouths. If they are swallowed, promptly see a doctor and have the doctor phone (202) 625-3333 collect. If you reside outside the United States, have the doctor call your local poison control center.
- TO AVOID BATTERY LEAKAGE
 - Always follow the instructions carefully. Use only batteries specified and be sure to insert them correctly by matching the + and - polarity markings.
 - Do not mix old batteries and new batteries or standard (carbon-zinc) with alkaline batteries.
 - Remove exhausted or dead batteries from the product.
 - Remove batteries if product is not to be played with for a long time.
 - Do not short-circuit the supply terminals.
 - RECHARGEABLE BATTERIES:** Do not mix these with any other types of batteries. Always remove from the product before recharging. Recharge batteries under adult supervision. **DO NOT RECHARGE OTHER TYPES OF BATTERIES.**
- Should this product cause, or be affected by, local electrical interference, move it away from other electrical equipment. Reset (switching off and back on again or removing and re-inserting batteries) if necessary.

SET UP

- Install batteries (see instructions).
- Download the Force Link 2.0™* app.
- Follow on-screen setup instructions.
- Once batteries are installed and app is downloaded, Force Link 2.0 wearable technology will automatically sync to smart device.

NOTE: When syncing Force Link 2.0 wearable technology gauntlet to smart device for first time, if sync does not happen automatically, enter Bluetooth menu on smart device and select Force Link 2.0 to sync manually.

Smart device required. Not included.



ADJUST STRAP TO FIT.

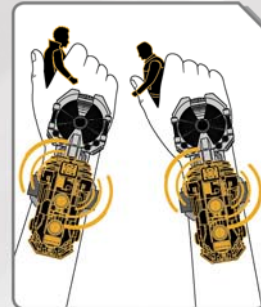
TO SYNC TWO GAUNTLETS FOR SOCIAL PLAY

INCLUDES ONE FORCE LINK 2.0 WEARABLE TECHNOLOGY GAUNTLET.

Additional gauntlets each sold separately.

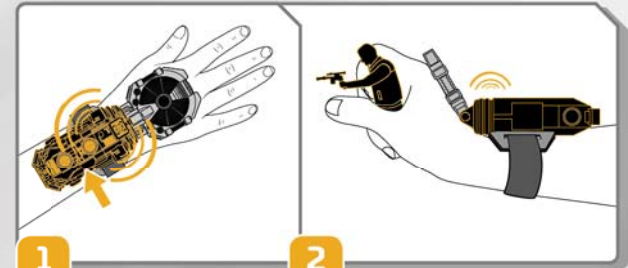
1. Once each individual gauntlet has completed initial sync/update to smart device & app using SET UP steps above, enter SOCIAL PLAY PAIRING MODE at any time by holding fists vertically as shown. Each user **MUST** hold figure in gauntlet to enter social pairing.

2. When successfully paired, devices will make a pairing sound.



NOTE: Maximum pairing is two Force Link 2.0 wearable technology gauntlets.

FIGURE ACTIVATION

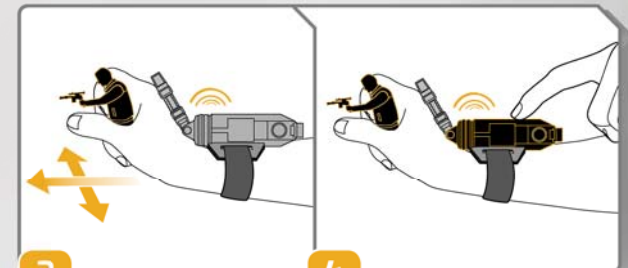


1

Wear Force Link 2.0 to begin.

2

Pick up figure. See hand placement for activation. Lunge figure forward to activate battle effects.



3

Move figure forward or from side to side to activate additional effects in battle mode.

4

Continue tapping Force Link 2.0 over speaker for more sounds.

Some poses may require additional support.

ARTECH

Customer Code: 5008/E03220000_352644_SW_S2_GAL_FORCELINK_2_STARTER_PACK_INST_FAR.indd
2017-11-0302/Anne/2017-11-15/Gracol 2006

運能設計制作(深圳)有限公司
www.artechgraphics.com.hk | info@artechgraphics.com.hk | Tel 755-3322 8070

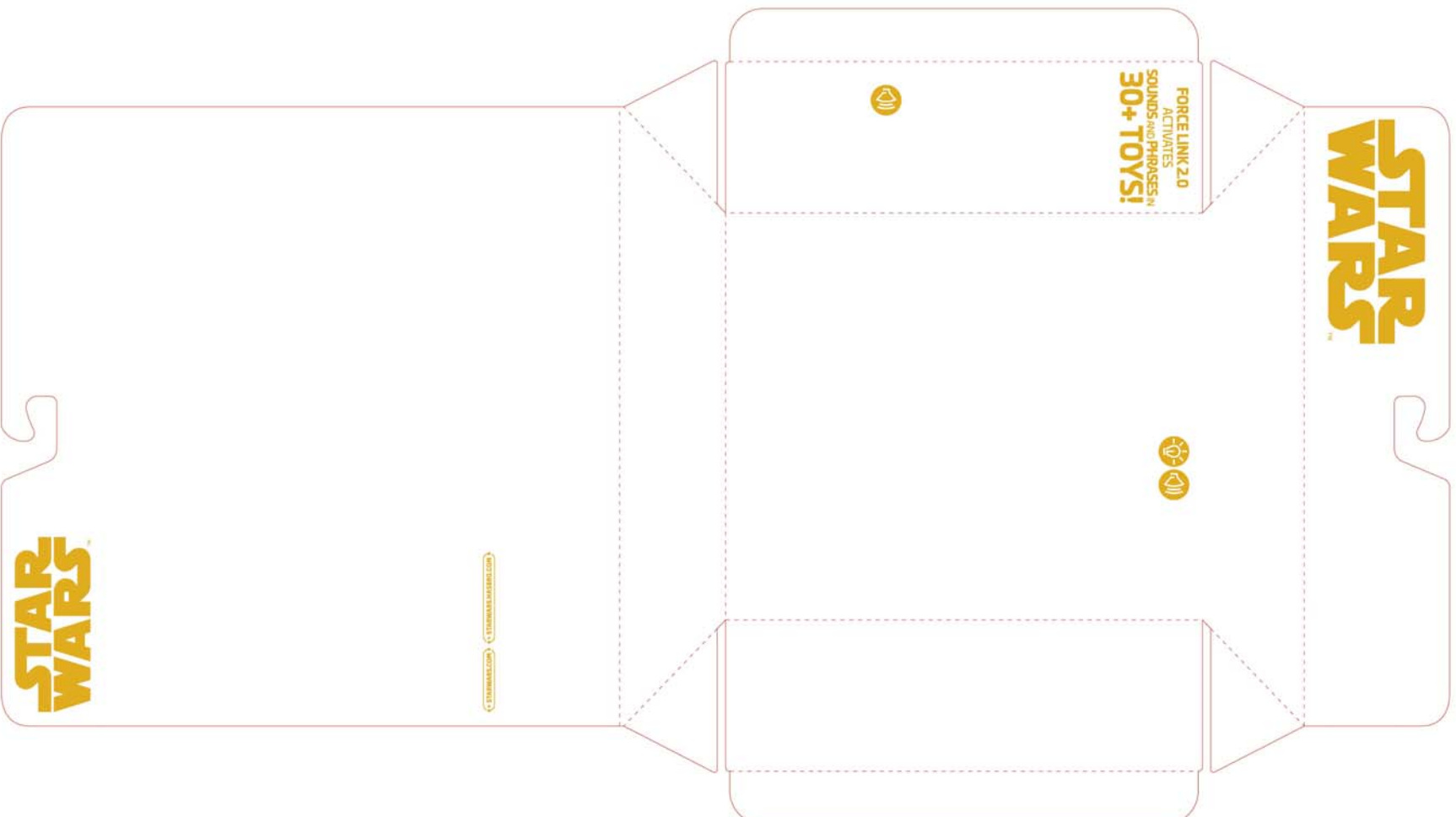
K

124C

PMS COLOUR FOR REFERENCE ONLY.
PLEASE REFER TO PANTONE GUIDE BOOK.



124C



EFI/Mark: ISO 15917:1 Digital Color Management



CL Hing Lin International Printing Co., Ltd.

Project: H032000_352644_SW_SWU_S2_FORCE_LINK_STARTER_PACK_S18_PKG_FAR
 Job No.: H03210
 File No: H032000
 Size: 11.25x5.25 5001 in
 Dircut: dir-001
 Software: Illustrator C Barcode: B Date: 2017-10-26 Operator: 18067
 001 002 003 Signature: PRINTED FROM

Color Checking

Printer: Epson 9880C
 Paper: Epsn 9910C
 Max. ABSM (4/3): _____ Output: _____ Date: _____
 Max. ABSM (4/3): _____ Date: _____
 Paper Type: Coated CNB
 Confirm: _____ Date: _____

The appearance of color on this proof is simulated. Color Research Station

CONFIDENTIAL

This device complies with Part 15 of the FCC Rules. Operation is subject to the following two conditions:
(1) This device may not cause harmful interference, and (2) This device must accept any interference received, including interference that may cause undesired operation.



PN00022080

Distributed in
Macquarie Pa
Zealand by Ha
Auckland, Ne

MADE IN CHINA

2.4 GHz

Font Size: 1.2mm