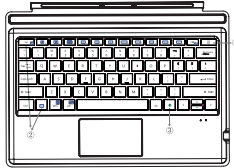


# Multi-Function Keyboard with Touchpad for Surface Pro 4 & Surface Pro 3 User Manual Model:HB187

## Package Contents

1. Bluetooth Keyboard with touchpad
2. Micro USB charging cable
3. User Manual

## Product Overview



1. Power on/off: Press **ON/OFF** 1.5 seconds, the keyboard turns on; Re-press 3 seconds to close.
2. Bluetooth pairing: Press **FN + Q** keys together for connecting.
3. Backlit on/off: Only for keyboard with backlit.

### Backlit of keyboard guide ( Only for Keyboard with backlit )

1. **Lighting ON/OFF Key**. Press first time is turning on the light. Press second time is increasing brightness. Press third time is lighting off.
2. **Color Key** to change the backlit colors. ( 7-color backlit )
3. When the battery is less than 20%, the backlit will be turn off.
4. The backlit won't work until the keyboard paired with your tablet.

### Specifications

Bluetooth Specification	Bluetooth 3.0
Touchpad	Blain chip, with left and right click control keyboard
Operating Range	Up to 33 feet or 10 meters
Lithium Battery Capacity	750 mAh
Standby Time	90 days
Charge Time	< 4 hours
Uninterrupted Work Time without backlit	187 hours
Uninterrupted Work Time with backlit	5 hours
Lithium Battery Life	3 years
OS Supported	Windows

### Keys and Functions

	ON/OFF		Mouse right button		Backlit on/off
	Touchpad on/off		Reduce brightness		Increase brightness
	Play/pause		Mute		Volume down
	Volume up		Print Sc		Cursor to the Front
	Line End		Page front		Page End
	Battery Power Display				

### Pairing Instruction

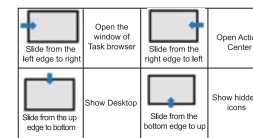
1. Press **Q** 1.5 seconds, the keyboard turns on, green light will be on for 10 seconds.
2. Press the **FN+ Q** keys together to enter pairing mode. The blue Bluetooth indicator will start to rapidly flash.
3. Go to your "SETTINGS" screen on your tablet with Bluetooth-enabled device, activate its Bluetooth function and search for the keyboard device.
4. "Bluetooth 3.0 Keyboard" should appear.
5. Select "Bluetooth 3.0 Keyboard" on your tablet and the keyboard will now be paired. The Bluetooth indicator will be off.

### SPECIAL NOTE:

1. Please get it charged before first usage.
2. Only one device can be actively paired at one time.
3. After pairing for the first time, your tablet will connect to the keyboard automatically when opening the keyboard.
4. In case of connect failure, delete the pairing record from your tablet, and try the above procedures again.

### Gestures supported Win 10

	Mouse left button		Move the mouse cursor
	Left button select the target, to drag		Mouse right button
	Middle key vertically scroll, sliding the mouse wheel.		Zoom in
	Zoom out		Open cortana
	Open the window of Task browser		Show Desktop
	Switch Active window		Open Action Center



### Power Saving Mode

The keyboard will enter sleep mode when idle for 30 minutes. To re-activate it, press any key and wait for 3 seconds.

### Charge It

1. Use the included USB cable for charging. Connect one end to a USB charger, and the other to the keyboard. (charger is not included)
2. In charging, the power indicator will turn red. Generally, it takes approximately 4 hours for a full charge.

### Caution

It is recommended that you turn off the keyboard to conserve the battery life.

### Troubleshooting

If you are unable to connect the keyboard to your tablet, please try the following:

1. Start with a full charge on both devices ensures that process won't be interrupted by a low battery.
2. Make sure your tablet's Bluetooth is on.
3. Make sure that the keyboard is within the effective operation distance of 33 feet (10 m).

### Safety Instructions

1. Keep the keyboard away from sharp objects that could damage it.
2. Do not stretch, twist or apply force to the keyboard.
3. Do not clean the keyboard, gently wipe it by using a moist cotton cloth.
4. To clean the keyboard, gently wipe it by using a moist cotton cloth.
5. Make sure the keyboard is turned off before cleaning. Do not use liquid cleaner.
6. Please do not spill coffee, tea or other liquids on the keyboard.

NOTE: This equipment has been tested and found to comply with the limits for a Class B digital device, pursuant to part 15 of the FCC Rules. These limits are designed to provide reasonable protection against harmful interference in a residential installation. This equipment generates, uses and can radiate radio frequency energy and, if not installed and used in accordance with the instructions, may cause harmful interference to radio communications. However, there is no guarantee that interference will not occur in a particular installation. If the equipment does cause harmful interference to radio or television reception, which can be determined by turning the equipment off and on, the user is encouraged to try to correct the interference by one or more of the following measures:

- Reorient or relocate the receiving antenna.
- Increase the separation between the equipment and receiver.
- Connect the equipment into an outlet on a circuit different from that to which the receiver is connected.
- Consult the dealer or an experienced radio/TV technician for help.

This device complies with part 15 of the FCC rules. Operation is subject to the following two conditions:

- (1) This device may not cause harmful interference, and
- (2) This device must accept any interference received, including interference that may cause undesired operation.

Changes or modifications to this unit not expressly approved by the party responsible for compliance could void the user's authority to operate the equipment.