

Start Here ▶▶▶

Important: Do not connect the USB adapter until you install the driver from the CD and are instructed to do so. Otherwise, the USB adapter may not operate correctly.



Package Contents

- 1 x Wireless-G USB Dish Adapter
- USB Extension Cable
- CD: User Manual & Driver (Mac & PC)

Requirements

- PC or Mac Laptop or Desktop
- Windows XP/Vista or Max OS X 10.4 or later
- One Available USB port
- An available Wireless 802.11b/g/n Network

Find Your Operating System

(See the reverse side for Mac Installation Instruction. Refer the manual on the install CD for Windows XP Instruction)

Windows Vista / 7

1. Insert the Setup CD and a menu page will automatically appear on your screen. Select Driver & Utility Install. Then, select a language and "next".
2. Wait until the installation completes. Then select "Next" in the following screen.
3. If you want to change any settings, click Back. Otherwise, click "Install" and wait while the Wizard installs the HWU9DD Driver and Utility.
4. When the installation is complete you may be prompted to restart your computer.
5. After the restart, plug in your Adapter. Windows will indicate that your network is not ready, select OK.
6. It is recommended for Windows 7 and Vista users to use the Windows Zero Configuration Utility. To connect, go to "Connect To A Wireless Network..."

Connect To A Wireless Network (Windows Vista)

1. The Adapter will automatically search and locate an open network. Select a location for the network.
2. Select a location for your network. If your selected network is encrypted/password protected, please enter the network security key and click "OK". If you don't have the network security key, please contact your network administrator.

Connect To A Wireless Network (Windows 7)

1. The Adapter will automatically search and locate an open network. Select a location for the network.
2. Select a location for your network. You can locate search for the available network by clicking on the wireless icon on your system tray (bottom-right corner).
3. If your selected network is encrypted /password protected, please enter the network security key and click "OK". If you don't have the network security key, please contact your network administrator.

Windows XP

1. Insert the Setup CD and a menu page will automatically appear on your screen. When prompted, select "Run" to continue.
2. Select a language, then click "next". Wait until the setup completes, then select "Next" on the following screen.
3. Click "Install" and wait while the installer configures the HWU9DD Driver and Utility.
4. Restart your computer when prompted to do so. Plug in the HWU9DD after your computer restarts.
5. Your computer will recognize the HWU9DD adapter, please wait while it locates the newly installed driver.
6. Finally select "Finish" to complete your software installation.

Connect To A Wireless Network [Using Hawking Wireless Utility]

- To manually connect to a network, go to your system tray on your bottom right hand corner and click on the Hawking Wireless icon.
 - From the Hawking Hi-Gain USB Wireless-G Dish Adapter Wireless Utility. Select the "Available Network" tab. Then choose a Wireless Network.
- If your desired network is password protected, please enter your password in the Network key field and re-enter it in the Confirm network key field.
- C. Congratulations! You are now connected. To view your link status, click on the General tab. For more information, please refer to the User's Manual on the CD.

Important: Do not connect the USB adapter until you install the driver from the CD and are instructed to do so. Otherwise, the USB adapter may not operate correctly. Be sure to save all your work before continuing. Your computer will automatically restart after the driver installation.



Package Contents

- 1 x Wireless-G USB Dish Adapter
- USB Extension Cable
- CD: User Manual & Driver (Mac & PC)

Requirements

- PC or Mac Laptop or Desktop
- Windows XP/Vista or Mac OS X 10.4 or later
- One Available USB port
- An available Wireless 802.11b/g/n Network

Mac OS 10.4 or later

The Installation Screens may vary depending on your Mac OS.

1. Insert the Setup CD and a menu page will automatically appear on your screen. Select "Click Here To Start".
2. Select the Mac OS X consistent with your computer. If you are uncertain about which Mac OS you are using, click on the APPLE icon on the upper-left corner of the Finder Menu bar and select "About this Mac" to view your current Mac OS X version.
3. Welcome to the Hawking HWU9DD Hi-Gain Adapter Driver Installer. Select "Continue". Read the Important information in the following screen and click "Continue".
4. Software License Agreement: select "Continue" and "Agree" in the following screen.
5. Select a destination and click "Continue". Select "Install" on the following screen.
6. If your computer is password protected, please enter your password to continue. Then, select "Continue Installation" in the following screen.
7. Please wait while the wizard installs the HWU9DD Driver. Select "Restart" when prompted.
8. Plug in the Hawking Wireless-G Adapter after your computer restarts.

Connect To A Wireless Network (Mac 10.5 or later)

- A. After plugging in the Adapter, the Hawking HWU9DD Wireless Utility will automatically pop up. You will be asked to enable your WLAN card. When the NOTICE appears, select "OK". Then, select "Network Preferences."

Please note the "Ethernet Adapter (en15)" network interface. You will need to enable this in the Network preference. The screen above shows "Ethernet Adapter (en15)" network interface, however the en number will vary from one computer to another.

- B. Enabling the USB Adapter in your Network Preferences. **Note:** In order for the Wireless-N Adapter to work properly, you must turn off any previously installed airport cards. To do this, go to the top right hand corner of your finder and select "Turn Airport Off".

Connect To A Wireless Network (Mac 10.4~10.4.9)

- A. After plugging in the Adapter, the Hawking HWU9DD Wireless Utility will automatically pop up. You will be asked to enable your WLAN card. When a NOTICE comes up, select "OK".

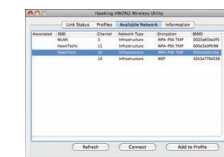
- B. Enabling the USB Adapter in your Network Preferences. **Note:** In order for the Wireless-G Adapter to work properly, you must turn off any previously installed airport cards. To do this, go to the top right hand corner of your finder and select "Turn Airport Off".

a) Click on the APPLE icon in the top left-hand corner and then select SYSTEM PREFERENCES.

b) Select the NETWORK icon

- C. A New Network Port has been detected.

- C. Select "Ethernet Adapter (...)." Then click "Apply."

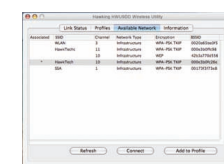


- D. In the "Available Network" tab, select a wireless network and click on "Connect."

Encryption/ Password Protected: If your selected network is password protected, please enter the network key and confirm it.

- F. Congratulations! You are now connected. To view your link status go to "Link Status" tab. For more information, please refer to the manual located in the CD.

- D. Select the Newly Installed Port and click "Apply."



- F. Now go to the Hawking HWU9DD Wireless Utility and select a wireless network and click on "Connect."

Encryption/ Password Protected: If your selected network is password protected, please enter the network key and confirm it.

Federal Communication Commission Interference Statement

This equipment has been tested and found to comply with the limits for a Class B digital device, pursuant to Part 15 of the FCC Rules. These limits are designed to provide reasonable protection against harmful interference in a residential installation. This equipment generates, uses and can radiate radio frequency energy and, if not installed and used in accordance with the instructions, may cause harmful interference to radio communications. However, there is no guarantee that interference will not occur in a particular installation. If this equipment does cause harmful interference to radio or television reception, which can be determined by turning the equipment off and on, the user is encouraged to try to correct the interference by one of the following measures:

- Reorient or relocate the receiving antenna.
- Increase the separation between the equipment and receiver.
- Connect the equipment into an outlet on a circuit different from that to which the receiver is connected.
- Consult the dealer or an experienced radio/TV technician for help.

FCC Caution: Any changes or modifications not expressly approved by the party responsible for compliance could void the user's authority to operate this equipment.

This device complies with Part 15 of the FCC Rules. Operation is subject to the following two conditions: (1) This device may not cause harmful interference, and (2) this device must accept any interference received, including interference that may cause undesired operation.

This device and its antenna(s) must not be co-located or operating in conjunction with any other antenna or transmitter.

FCC Radiation Exposure Statement:

This equipment complies with FCC radiation exposure limits set forth for an uncontrolled environment. This equipment should be installed and operated with minimum distance **20cm** between the radiator & your body.