

Thank You for Purchasing Notifi™

Welcome to Notifi by HeathZenith, the first video doorbell system that doesn't require batteries for the camera and allows you to position the camera to best suit your needs. This quick start guide will help setup the Notifi system. For additional support, videos, and to download the full manual, go to www.heath-zenith.com/notifi.

Important Information

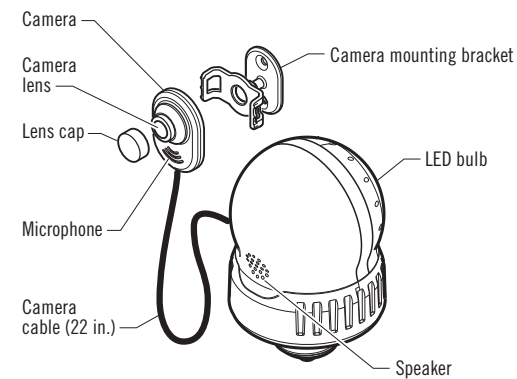
- Minimum system requirement for the Notifi app
 - iOS 7.0 or higher
 - Android 2.2 or higher.
- The Notifi camera requires constant power to operate. Whenever the power is turned on to the camera (either for the first time or after a power outage), the bulb requires a short 60-second boot-up period before the camera will be fully operational.
- Not compatible with lights controlled by a:
 - photocell (dusk-to-dawn operation)
 - motion sensor
 - dimmer
 - timer

You Will Need

- Password for your home network
- Broadband internet connection with home wi-fi router
- Phillips screwdriver
- Flat-head screwdriver
- Light fixture with medium base bulb

1 Know Your System

- Use the illustration below to get to know the different components of your new Notifi system.

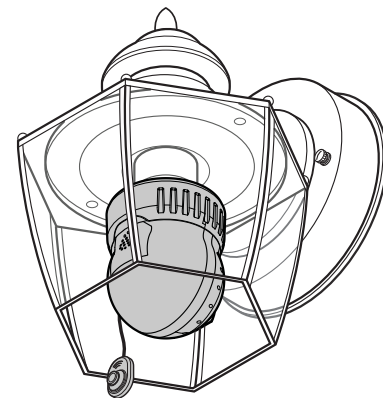


2 Download the Notifi App

- See the enclosed cover letter for instructions on how to download the Notifi app onto your device.

3 Install the Bulb

- **IMPORTANT: Wait until step 5 to mount the camera.**
- Turn the power OFF to the light fixture.
- Remove the existing bulb.
- Screw in the new Notifi bulb and camera until fully seated in the light socket.
- Continue to rotate the bulb until the "Notifi" logo is facing away from the house. The base of the bulb will click during installation to allow the bulb to be aligned properly.
- Turn the power ON to the light fixture – the bulb will turn ON for 60-seconds and then turn OFF after the boot-up period.
- Remove the camera lens cap.



4 Setup the Notifi App and Camera

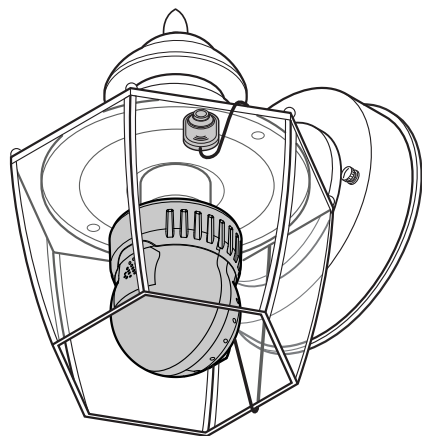
- **IMPORTANT: Your home password will be required during this process.**
- Allow the bulb to fully boot-up.
- On your mobile device, go to Settings > Wi-Fi. Select the "Notifi Video Doorbell" from the available Wi-Fi networks.
- Once connected, open the Notifi app. The app will detect your new Notifi system.
- Select "YES" to start the setup and the app will guide you through the remaining steps.

notifi
video doorbell system

Download a complete manual at www.heath-zenith.com/notifi

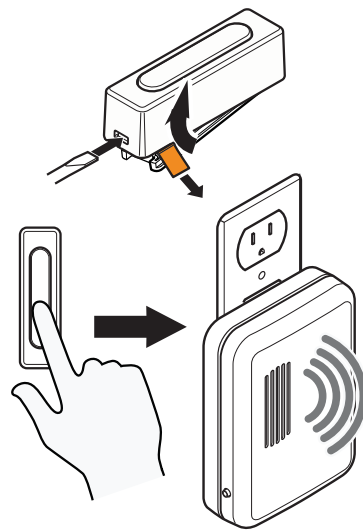
5 Install the Camera

- Login to your the Notifi account and select the name of your new Notifi system.
- While watching the phone's video feed, position the camera to the area in front of the door.
- Secure the camera using the double-sided tape or screws.
- Note: The camera's image can be rotated 180° within the app. This allows you to mount the camera upside down if needed. You can select this option after the setup is complete.



6 Install the Push Button & Chime

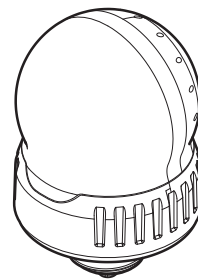
- Plug in the chime.
- Open the push button and remove the orange battery tab.
- Temporarily hold the push button where it will be mounted and press the button.
- If the chime rings, mount the push button.
- If the chime does not ring, move the chime closer to the push button and test again.



Additional Accessories

Additional Light Bulb Model Number: SL-3008-00

For use when there is more than one light at the entry area.



Order accessories and download a complete manual at www.heath-zenith.com/notifi

FCC Statement

This device complies with Part 15 of the FCC Rules and RSS-210 of Industry Canada. Operation is subject to the following two conditions: (1) this device may not cause harmful interference, and (2) this device must accept any interference received, including interference that may cause undesired operation. The user is cautioned that changes or modifications not expressly approved by the party responsible for regulatory compliance could void the user's authority to operate the equipment.

Warranty

1 Year Limited Warranty

Many states regulate the use of security cameras and other recording devices. It is the purchaser's sole responsibility to ensure compliance with all applicable laws and to provide any legally required notices. Check local laws regarding the use of any recording devices and cameras prior to installation.

Apple and the Apple logos are trademarks of Apple Inc., registered in the U.S., and other countries. App Store is a service mark of Apple Inc.

Google Play is a trademark of Google Inc.

Android is a trademark of Google Inc.

208476-01

HeathZenith



notifi™
video doorbell system

Quick Install Guide

