

350.00mm

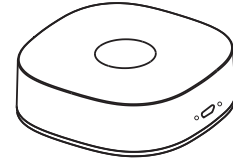
70.00 mm

140.00 mm

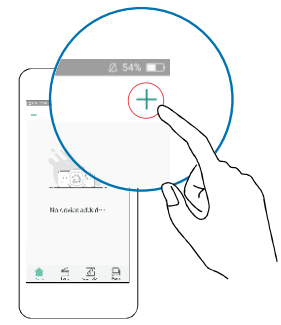
70.00 mm

Smart Gateway User Manual

M420-3Ever1.1



*Please read the user manual carefully before operation. The guide picture is for reference only, please in kind prevail.

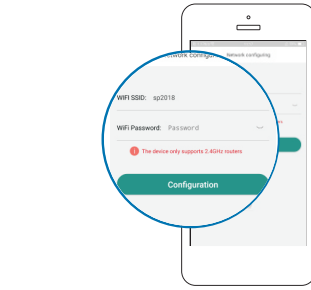
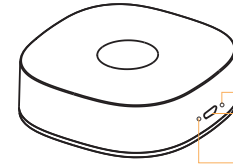


- Tap "+" in the APP, then choose "Mini Gateway" under the list of WiFi Device.

1 Product Description

This smart gateway, adopting super low power consumption Zigbee technology, can work with kinds of smart sensors and smart home appliances to build a smart home system and the gateway works as the central controller. Built-in WiFi module supports direct connection to user's household WiFi network. Its acousto-optic alarm function can keep user informed of any emergency circumstance.

2 Product Details



- Tap "Next" and input WiFi password, then tap "Configuration"

3 Specification

- 1.Working Voltage:DC5V/1A
- 2.Networking: Zigbee HA
- 3.Wireless Networking Distance: ≤100m (open area)
- 4.WiFi: IEEE 802.11b/g/n 2.4GHz
- 5.Working Temperature: -10°C~+50°C
- 6.Working Humidity: ≤95%RH
- 7.Dimension: 80*80*28mm



- You can start to use after the device is added successfully.

4 Quick Setup

Scan the QR code to download APP, and sign up with a valid email, log in email box and activate your account.



Networking Button Instruction

Status	Operation
WiFi configuration	Press and hold the networking button for 5 seconds, the gateway will enter WiFi configuration mode.
Network configuration	When the gateway is under standby status, press the network button twice in succession and the gateway will enter ZigBee network configuration mode.
	When under ZigBee network configuration mode, press the network button twice in succession and the gateway will exit ZigBee network configuration mode.

6

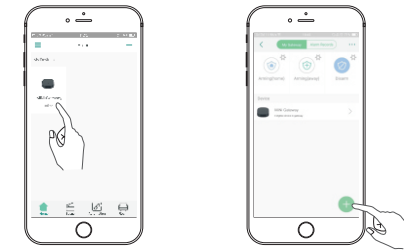
Status	Operation
Reset	Press the network button ten times in succession and the gateway will be reset: delete all Zigbee devices, delete all connections between gateway and APP, delete all WiFi configuration information.

LED Indicator Status Instruction

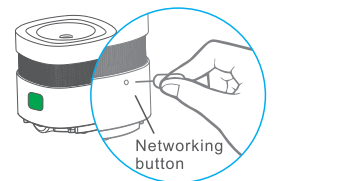
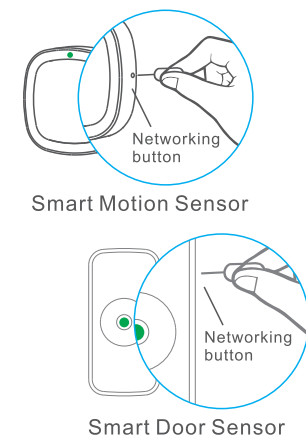
LED indicator	Status
Light Off	When gateway is working normally and gateway is already connected to WiFi, LED is off.
Yellow	When gateway is offline or WiFi is unavailable, yellow LED flashes slowly(once every 3 seconds).
	When WiFi Firmware is updating, yellow LED flashes (twice per second).
Green	When Zigbee devices are added successfully, green LED flashes quickly(5 times per second).

LED indicator	Status
Red	When gateway is powering on, red LED will keep on for 0.2 seconds and go off.
	While setting gateway WiFi, red LED flashes slowly(once per second).
	When Zigbee Firmware is updating, red LED flashes (twice per second).

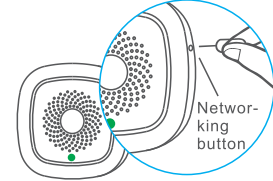
5 Adding Devices



- Choose the gateway that needs to add Zigbee device. On App homepage, tap on the right gateway and enter the gateway page, then click "+".



Smart Smoke Sensor



Smart Temperature & Humidity Sensor

Adding devices: After tap "+" in the gateway, according to APP instructions, press and hold the networking button of Zigbee device for 2 seconds, till the green LED of device flashes quickly, next, the green LED of the device will keep on for 3 seconds, after that, the device photo will be shown in APP, indicating that device is added to gateway successfully.

Removing devices: Press and hold the networking button of Zigbee device for 5 seconds, then the green LED of the device will flash slowly for 3 seconds, indicating that device is deleted from gateway successfully. Or long press the device in the APP and tap "Delete Device" to delete.

Statements:
 * Illustrations are for reference only.
 * As the technology updates, there may be differences between user manual and actual operations, and the final interpretation rights is owned by the manufacturer.

FCC Warning Statement

This equipment has been tested and found to comply with the limits for a Class B digital device, pursuant to part 15 of the FCC Rules. These limits are designed to provide reasonable protection against harmful interference in a residential installation. This equipment generates, uses and can radiate radio frequency energy and, if not installed and used in accordance with the instructions, may cause harmful interference to radio communications. However, there is no guarantee that interference will not occur in a particular installation. If this equipment does cause harmful

interference to radio or television reception, which can be determined by turning the equipment off and on, the user is encouraged to try to correct the interference by one or more of the following measures:
 Reorient or relocate the receiving antenna.
 Increase the separation between the equipment and receiver.
 Connect the equipment into an outlet on a circuit different from that to which the receiver is connected.
 Consult the dealer or an experienced radio/TV technician for help.
 Caution: Any changes or modifications to this device not explicitly approved by manufacturer could void your authority to operate this equipment.
 This device complies with part 15 of the FCC Rules. Operation is subject to the following two conditions: (1) This device may not cause harmful interference, and (2) this device must accept any interference received, including interference that may cause undesired operation.
 To comply with FCC RF exposure compliance requirements, this grant is applicable to only mobile configurations. The antennas used for this transmitter must be installed to provide a separation distance of at least 20 cm from all persons and must not be co-located or operating in conjunction with any other antenna or transmitter.