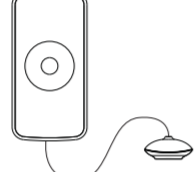


Smart Water Leakage Sensor User Manual HS1WL

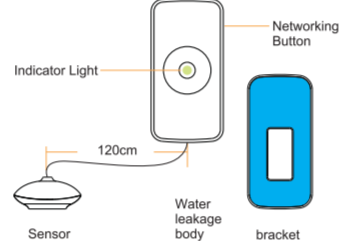


*Please read the user manual carefully before operation.
The guide picture is for reference only, please in kind prevail.

Smart water leakage sensor, adopts ZigBee wireless module. Super low power consumption circuit design, makes long battery lifespan. Separate design of body and sensor, efficiently prevent the influence resulted from high humidity. High precision and sensitivity, applicable for basement, machine room, hotel, water tower, pool, swimming pool, solar, kitchen, bathroom and other places may have water leakage or water overflow.

1

Product Information



2

1. Working Voltage: DC3V (2×AAA battery)
2. Static Current: ≤5uA
3. Alarm Current: ≤35mA
4. Networking: ZigBee AS-Hoc Networking
5. Wireless Networking Distance: ≥70m (in the open area)
6. Working Environment: -10°C ~ +55°C
7. Working Humidity: Maxium 95%RH (No condensation)
8. Body Dimension: 76×36.6×16.5 mm
9. Sensor Dimension: 28.3×26.5×12.2 mm

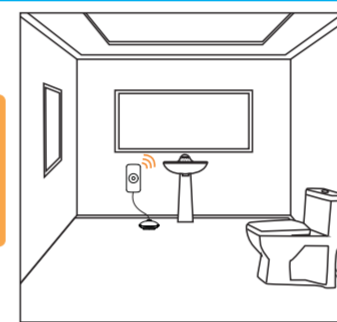
3

Technical Tips

1. Install water leakage sensor at easy leakage area.
2. Don't install water leakage sensor at position of rainwater, lampblack, water vapor etc.
3. Don't install water leakage sensor at water immersed position.

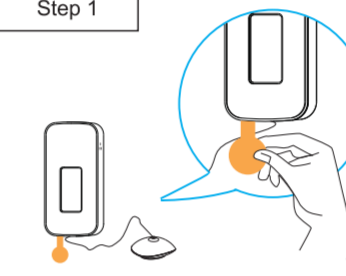
4

Installation



5

Step 1



- Remove battery insulation film to power on.

6

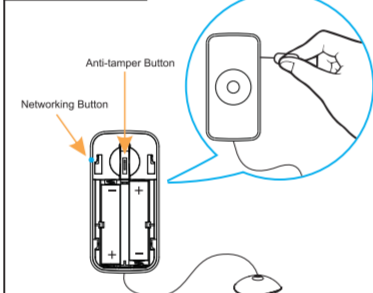
Step 2



- Click the "add" icon in the gateway interface to enter into networking mode.

7

Step 3



Networking Button

Anti-lampar Button

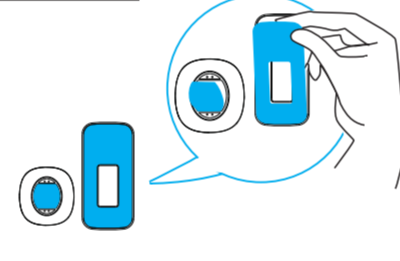
- Connecting network: According to APP prompt, press networking hole with a needle, then green light flashes quickly, green light keeps on for 2-3 seconds, networking succeed.
- Disconnecting network: Press the networking hole with a needle for 8 seconds to disconnect the network, then green light keeps on for 2-3 seconds, which indicates network is disconnected successfully.

LED indicator instruction of devices

Light	Status
Green Light	1. Flash quickly during connecting network. 2. Keep on for 2-3 seconds when networking succeed. 3. Flash quickly for 1 minute after networking fail.
Light	1. Flash once when power on. 2. Keep on 2-3 seconds after long press networking hole for 8 seconds to disconnect network.
Red light	1. When the alarm light 0.5 to 1 seconds or so.

9

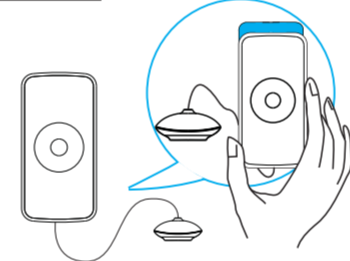
Step 4



- Tear off the double-side tap, and paste the device in the required area.

10

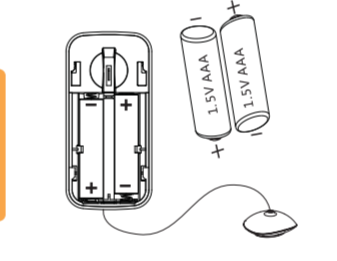
Step 5



- Insert water leakage body to bracket.

11

Changing



- Insert the battery into the battery compartment and close the battery cover. (Please note Battery positive and negative).

12

Statement
*Instruction is for reference only, please prevail in kind.
*Because of the updating of the technology, the final interpretation right owned by factory, if there are any inconformities when using this products under this instruction.

13

FCC Warning:

This equipment has been tested and found to comply with the limits for a Class B digital device, pursuant to part 15 of the FCC Rules. These limits are designed to provide reasonable protection against harmful interference in a residential installation. This equipment generates, uses and can radiate radio frequency energy and, if not installed and used in accordance with the instructions, may cause harmful interference to radio communications.

However, there is no guarantee that interference will not occur in a particular installation. If this equipment does cause harmful interference to radio or television reception, which can be determined by turning the equipment off and on, the user is encouraged to try to correct the interference by one or more of the following measures:

- Reorient or relocate the receiving antenna.
- Increase the separation between the equipment and receiver.
- Connect the equipment into an outlet on a circuit different from that to which the receiver is connected.
- Consult the dealer or an experienced radio/TV technician for help.

Caution: Any changes or modifications to this device not explicitly approved by manufacturer could void your authority to operate this equipment.

This device complies with part 15 of the FCC Rules. Operation is subject to the following two conditions: (1) This device may not cause harmful interference, and (2) this device must accept any interference received, including interference that may cause undesired operation.

To comply with FCC RF exposure compliance requirements, this grant is applicable to only mobile configurations. The antennas used for this transmitter must be installed to provide a separation distance of at least 20 cm from all persons and must not be co-located or operating in conjunction with any other antenna or transmitter.