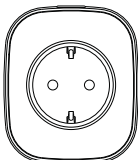


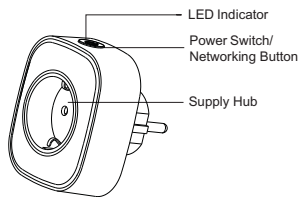
Smart Metering Plug Quick Operation Guide

HS2SK-Z-US



*Please read the user manual carefully before operation.
The guide picture is for reference only, please in kind prevail.

Product Details



1

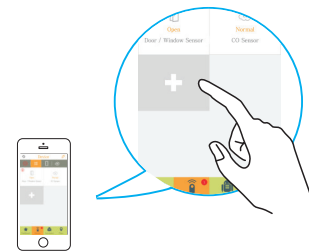
This is a smart metering plug, adopts flame retardant housing shell, and super low power consumption Z-Wave wireless transmission technology. It can be used as Z-Wave wireless repeater, to extend wireless communication distance. It supports power metering and timing switch functions. With the function of power, voltage, current overload protection. Plug and play, easy to install. Plug and play, easy to install.

Product Description

Technical Parameters

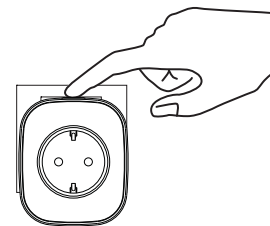
1. Working Voltage: AC100V~240V (full voltage range)
2. Average Power Consumption: <0.5W
3. Maximum Load: 3000W
4. Metering Voltage Range: 100VAC-240VAC
5. Metering Current Range: <16A
6. Metering Power Range: <3000W
7. Wireless Networking Distance: Up to 100 meters (in open area)
8. Working Environment: -10°C ~ +50°C
9. Working Humidity: ≤ 95%RH
10. Networking : Z-Wave Network
11. Dimensions: 79.6*67.9*72mm

3



- Please click the add button ("+") of APP to enter gateway networking mode.

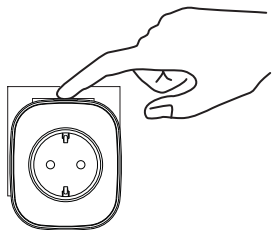
4



- Networking: According to APP prompting, please press power on/off button of smart meter plug for 3 times in 1.5 seconds, then blue LED will flash quickly (the longest networking time is 30 seconds), APP interface will indicate networking success.

5

Networking



- Factory Reset: Long press power on/off button for 10 seconds, then ID code will be cleared and smart metering plug will be reset.

6

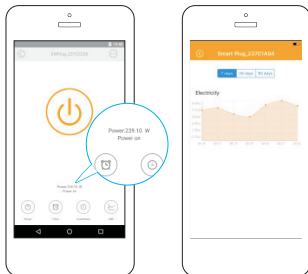
Delete sub device

- Disconnecting: Please click delete button of the device in APP, then press power on/off button of smart metering plug for 3 times in 1.5 seconds, blue LED will flash slowly for 6 times, APP interface will indicate disconnecting success.

Description of LED Indicator Status

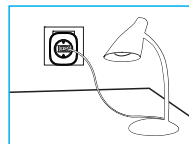
Light	State
Blue LED	Flash quickly when networking
	Flash slowly when disconnecting
	Light on when plug is turned on
	Light off when plug is turned off

7



- The APP interface will show the power of the appliance and record the power consumption after appliance is plugged into the smart plug.

8

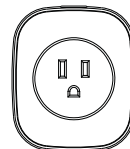


It is suit to work with table lamp, TV, air-conditioner, refrigerator, electric fan, coffee machine, bread machine and some other household appliances and metering power consumption.

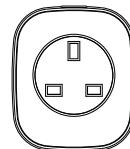
Power on/off: After pressing power switch/networking button, blue LED keeps on and supply hub will be powered on; Press power switch/networking button again, blue LED turned off, supply hub will be powered off.

9

Chooseable Plugs



US Standard Smart Plug



UK Standard Smart Plug

Please choose proper plug type according to your need.

Statement

- *Instruction is for reference only, please prevail in kind.
- *Because of the updating of the technology, the final interpretation right owned by factory, if there are any inconformities when using this products under this instruction.

10

FCC Warning:

This equipment has been tested and found to comply with the limits for a Class B digital device, pursuant to part 15 of the FCC Rules. These limits are designed to provide reasonable protection against harmful interference in a residential installation. This equipment generates, uses and can radiate radio frequency energy and, if not installed and used in accordance with the instructions, may cause harmful interference to radio communications. However, there is no guarantee that interference will not occur in a particular installation. If this equipment does cause harmful interference to radio or television reception, which can be determined by turning the equipment off and on, the user is encouraged to try to correct the interference by one or more of the following measures:

- o Reorient or relocate the receiving antenna.
- o Increase the separation between the equipment and receiver.
- o Connect the equipment into an outlet on a circuit different from that to which the receiver is connected.
- o Consult the dealer or an experienced radio/TV technician for help.

Caution: Any changes or modifications to this device not explicitly approved by manufacturer could void your authority to operate this equipment.

This device complies with part 15 of the FCC Rules. Operation is subject to the following two conditions: (1) This device may not cause harmful interference, and (2) this device must accept any interference received, including interference that may cause undesired operation.

To comply with FCC RF exposure compliance requirements, this grant is applicable to only mobile configurations. The antennas used for this transmitter must be installed to provide a separation distance of at least 20 cm from all persons and must not be co-located or operating in conjunction with any other antenna or transmitter.

11